



CITY OF DETROIT
DEPARTMENT OF PUBLIC WORKS
CITY ENGINEERING DIVISION

COLEMAN A. YOUNG MUNICIPAL CENTER
2 WOODWARD AVE. SUITE 601
DETROIT, MICHIGAN 48226
PHONE: (313) 224-3949 TTY: 711
WWW.DETROITMI.GOV

To: Clerk's Office
From: The Department of Public Works
City Engineering Division
MapsandRecordsBureau@DetroitMI.Gov
(313) 224-3970

Petitioner:
630 Webward Building LLC
630 Woodward Avenue
Detroit, MI, 48226

On behalf of the above-mentioned petitioner the Department of Public Works: City Engineering Division is submitting a petition request for the action below. The petitioner has received a project consultation from the Department of Public Works: City Engineering Division and has been advised the following:

Type of action recommended:

Petition for encroachment into the public alley, lying adjacent to the property commonly known as 630 Woodward Avenue, for the purpose of installing a wall mount that will support the HVAC unit servicing the restaurant located at 630 Woodward Avenue.

Jered Dean
Manager II
Department of Public Works
City Engineering Division
313-224-3985



To who it may concern,

On behalf of Chipotle Mexican Grill, Wilkus Architects is requesting encroachments for wall mounted RTU's in the alley off Congress Street behind Suite 620 of the building at 630 Woodward Ave, Detroit, MI 48226. Bedrock is the owner of the neighboring tenants. The RTU dimensions are as follows:

1 Exhaust fan – 4'-9 ½" x 4'-9" x 4'-9"

The exhaust fan extends 4'-9 ½" over the property line.

4 Condensing units – 3'-1 ½" x 3'x2 ¼" x 3'-10 ½"

The condensing units rest of shelves that extend 3'-4" over the property line.

1 cooler condenser – 2'-1 ½" x 3'-6 ¾" x 1'-7 ¼"

The cooler condensing unit rests on a shelf that extends 3'-4" over the property line.

Thanks, there are two existing shelves that extend 3'- 4 ½" over the property line.

Wilkus Architects:

Wilkus Architects, P.A.

15 Ninth Ave N

Hopkins, MN 55343

Dusty Austin

dla@wilkusarch.com

952.843.5048

Landlord:

Bedrock Detroit

630 Woodward Ave

Detroit, MI 48226

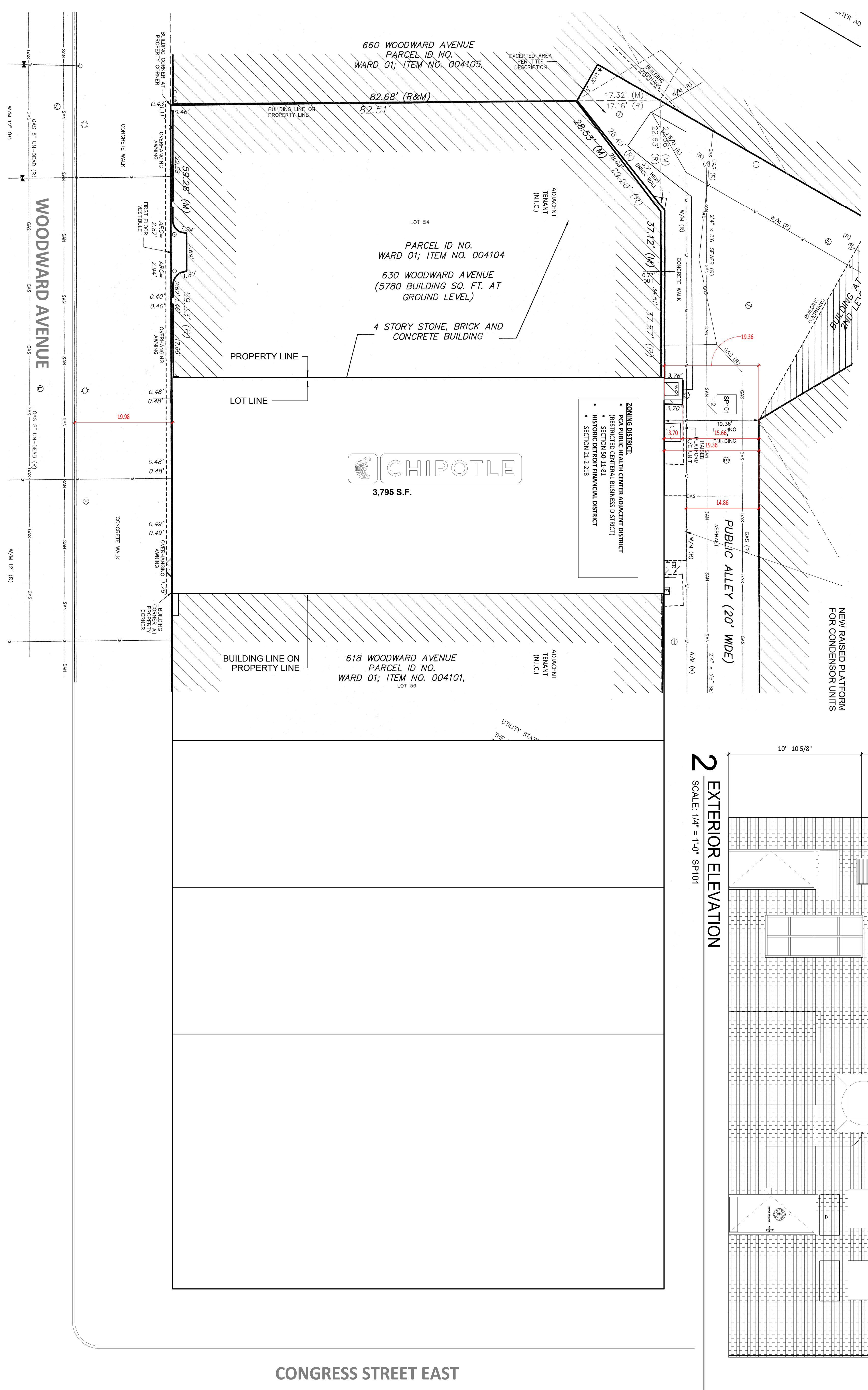
Jennifer Skiba

jenniferskiba@bedrockdetroit.com

313.373.6526

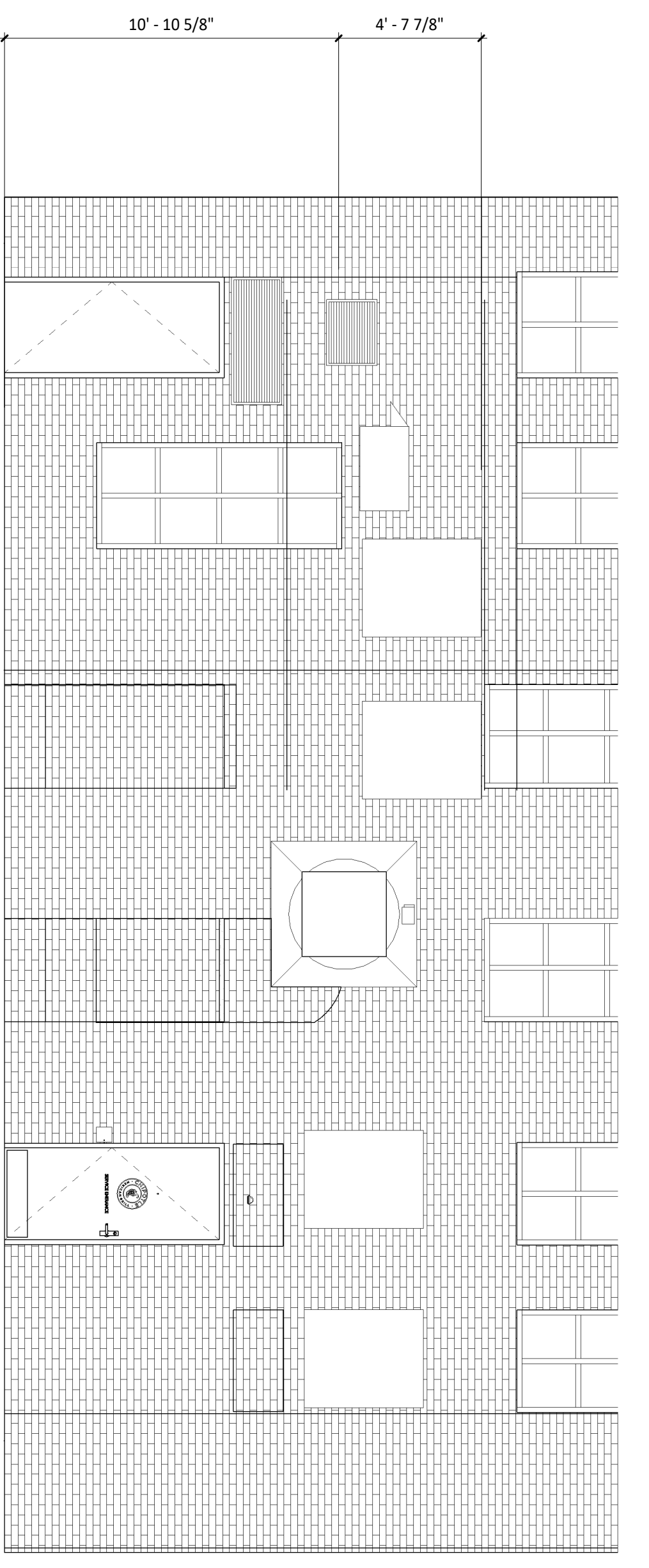
1 ARCHITECTURAL SITE PLAN

SCALE: 1" = 10'-0" SP-101



2 EXTERIOR ELEVATION

SCALE: 1/4" = 1'-0" SP-101



CHIPOTLE MEXICAN GRILL, INC.
CORPORATE HEADQUARTERS
11000 WOODWARD AVENUE
DETROIT, MI 48226
TEL: 313.487.8888
WWW.CHIPOTLE.COM

THIS DRAWING IS AN INSTRUMENT OF SERVICE AND NOT BE LOANED, REPRODUCED, COPIED, REPRODUCED, OR TRANSMITTED IN ANY FORM OR BY ANY MEANS, ELECTRONIC OR MECHANICAL, INCLUDING PHOTOCOPYING, RECORDING, OR BY ANY INFORMATION STORAGE AND RETRIEVAL SYSTEM, WITHOUT THE WRITTEN PERMISSION OF WILKUS ARCHITECTS, INC.

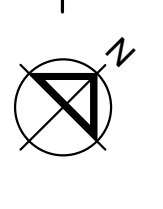
STORE NO.: 4593
"DOWNTOWN DETROIT"
630 WOODWARD AVE, SUITE 620
DETROIT, MI 48226

FOR CONSTRUCTION

PROJECT NO. 2022-0296
DRAWN BY D. ALISTIN
CHECKED BY D. ALISTIN
ISSUE RECORD:
07/26/23 PERMIT SET
08/28/23 BID SET
12/08/23 CONSTRUCTION SET
REVISIONS:
2 11/01/2023 SITE PLAN - APPROVAL ONLY

TITLE
SITE PLAN - FOR APPROVAL ONLY

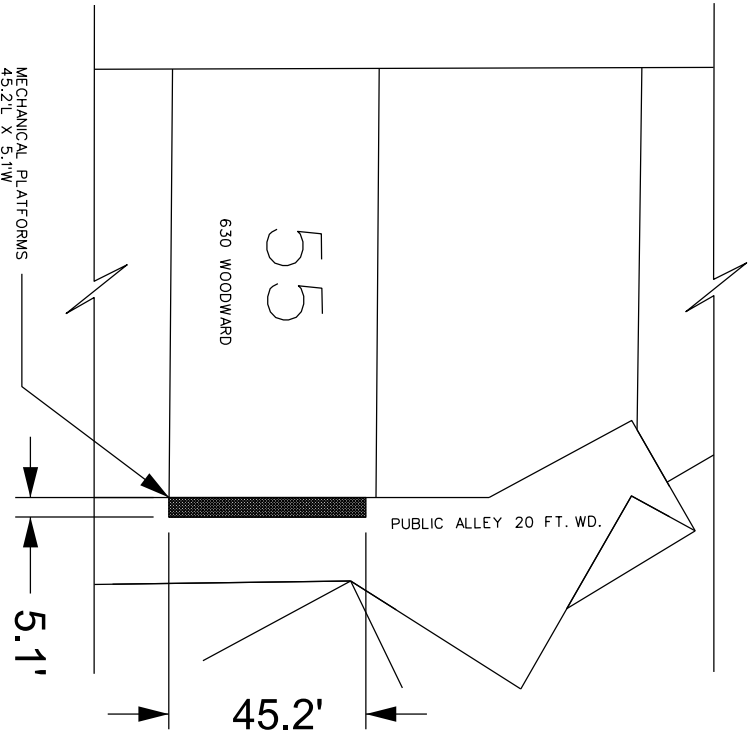
SHEET NUMBER
SP101





WOODWARD AVE. 190 FT. WD.

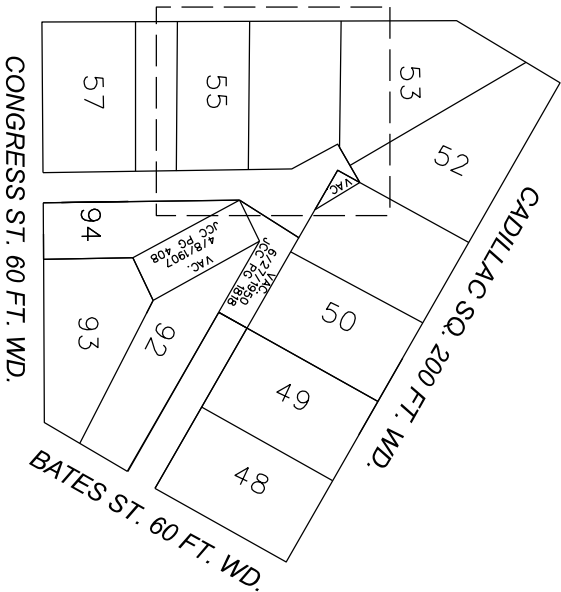
CONGRESS ST. 60 FT. WD.



- REQUEST ENCROACHMENT
 (For Mechanical Platforms,
 10.8' to 15.5' above grade)

(FOR OFFICE USE ONLY)

WOODWARD AVE. 190 FT. WD.



CARTO 28 F

B				
A				
DESCRIPTION		DRWN	CHKD	APPD
REVISIONS		DATE		
DRAWN BY	AP	CHECKED	LC	
DATE	02-15-2024	APPROVED	JD	

**REQUEST ENCROACHMENT
 INTO NORTH/SOUTH ALLEY
 AT 630 WOODWARD AVE.**

CITY OF DETROIT CITY ENGINEERING DIVISION SURVEY BUREAU	
JOB NO.	24-15
DRWG. NO.	