

City of Detroit

Janice M. Winfrey
City Clerk

OFFICE OF THE CITY CLERK

Andre P. Gilbert II
Deputy City Clerk

DEPARTMENT PETITION REFERENCE COMMUNICATION

To: The Department or Commission Listed Below

From: Janice M Winfrey, Detroit City Clerk

The following petition is herewith referred to you for report and recommendation to the City Council.

In accordance with that body's directive, kindly return the same with your report in duplicate within four (4) weeks.

Petition No.	2024-085
Name of Petitioner	City of Detroit: Department of Public Works
Description of Petition	Petition for the dedication of land, for right-of-way purposes, for the realignment of Mt. Elliott Street and Conant Street, between Strong Street and Klein Street. Said land dedication will include land from the properties commonly known as 2500 East Grand Blvd and 8001 Conant Street.
Type of Petition	Alley Vacation/Encroachment/Utility Vacation
Submission Date	03/06/2024
Concerned Departments	Department of Public Works, Planning and Development Department, City Engineering Division
Petitioner Contact	Jered Dean Manager II Department of Public Works City Engineering Division 313-224-3985 deanj@detroitmi.gov



CITY OF DETROIT
DEPARTMENT OF PUBLIC WORKS
CITY ENGINEERING DIVISION

COLEMAN A. YOUNG MUNICIPAL CENTER
2 WOODWARD AVE. SUITE 601
DETROIT, MICHIGAN 48226
PHONE: (313) 224-3949 TTY: 711
WWW.DETROITMI.GOV

To: Clerk's Office
From: The Department of Public Works
City Engineering Division
MapsandRecordsBureau@DetroitMI.Gov
(313) 224-3970

Petitioner:
City of Detroit: Department of Public Works
2 Woodward Avenue, Suite 601
Detroit, MI, 48226

On behalf of the above-mentioned petitioner the Department of Public Works: City Engineering Division is submitting a petition request for the action below. The petitioner has received a project consultation from the Department of Public Works: City Engineering Division and has been advised the following:

Type of action recommended:

Petition for the dedication of land, for right-of-way purposes, for the realignment of Mt. Elliott Street and Conant Street, between Strong Street and Klein Street. Said land dedication will include land from the properties commonly known as 2500 East Grand Blvd and 8001 Conant Street.

Jered Dean
Manager II
Department of Public Works
City Engineering Division
313-224-3985

LEGAL DESCRIPTION

PART OF WEST R.O.W. OF CONANT 85 FT WD; ALSO, PART OF West R.O.W MT. ELLIOT street,
LAND SITUATED IN THE CITY OF DETROIT, COUNTY OF WAYNE, STATE OF MICHIGAN, PART OF
"CENTRAL INDUSTRIAL PARK SUBDIVISION AMENDED PLAT", LIBER 101 PAGE 78 RECORDED
ON (WCR.), PART OF EAST LOT 1,
FRACTIONAL SECTION 28 T.1S, R12E, PARTICULARLY DESCRIBED AS FOLLOWS:

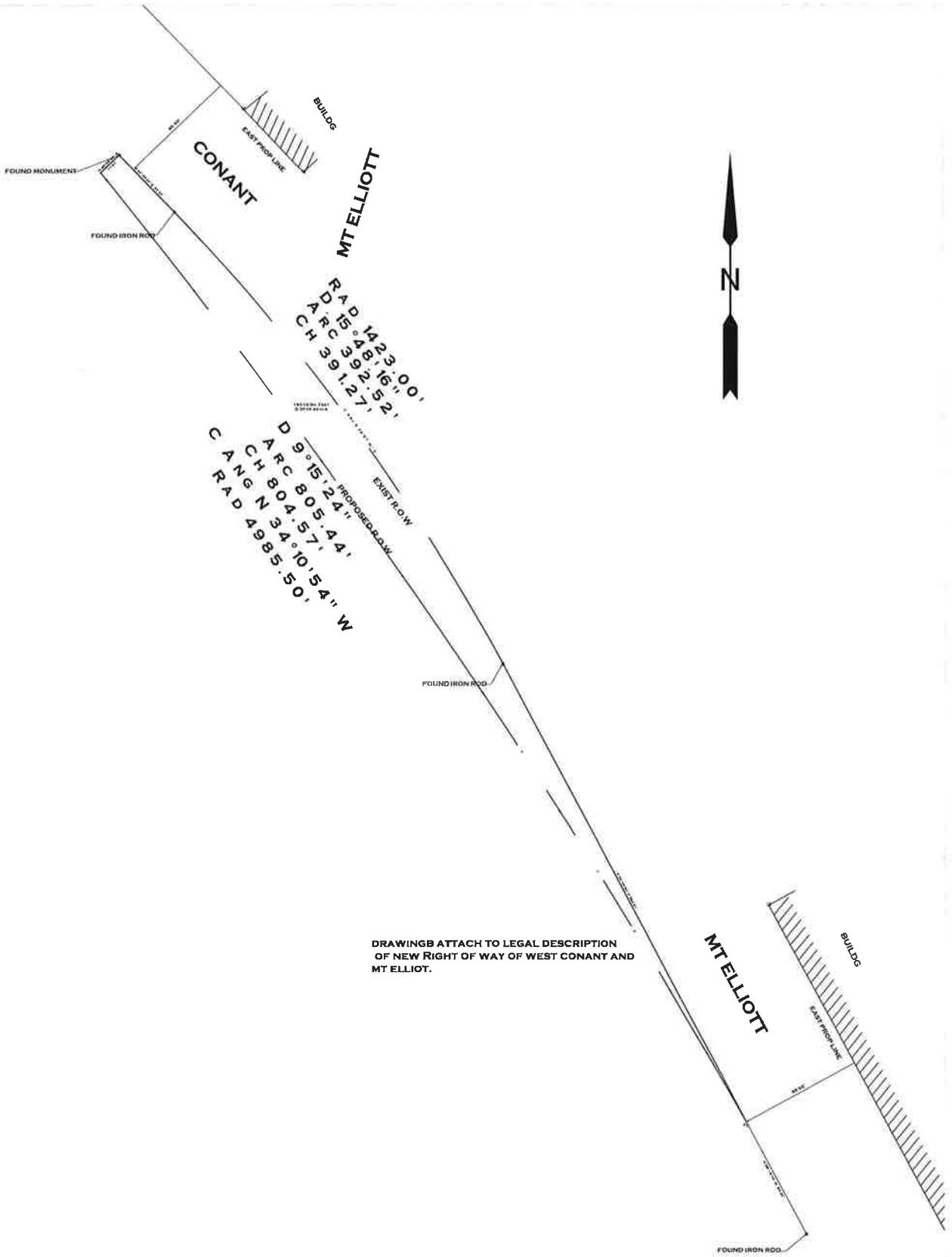
Commencing at found iron rod on East line of Lot 1; thence N
28°13'10" W a distance of 89.39' to a POINT OF CURVATURE with a curve
turning to the left with an arc length of 805.44',
with a radius of 4985.50', with a chord bearing of N 34°10'54" W, with a
chord length of 804.57', with a delta of 9°15'24"; thence N 46°08'20" E a distance of
17.97' To existing Conant R.O.W.

thence S 43°49'20" E a distance of 55.59'; thence with a curve turning to
the right with an arc length of 392.52', with a radius of 1423.00', with a chord
bearing of S 35°57'10" E,

with a chord length of 391.27', with a delta of 15°48'16"; thence
S28°00'32"E a distance of 363.81', which is the point of beginning, having an area
of 16013.66 square feet, 0.368 acres.



5-3-2022

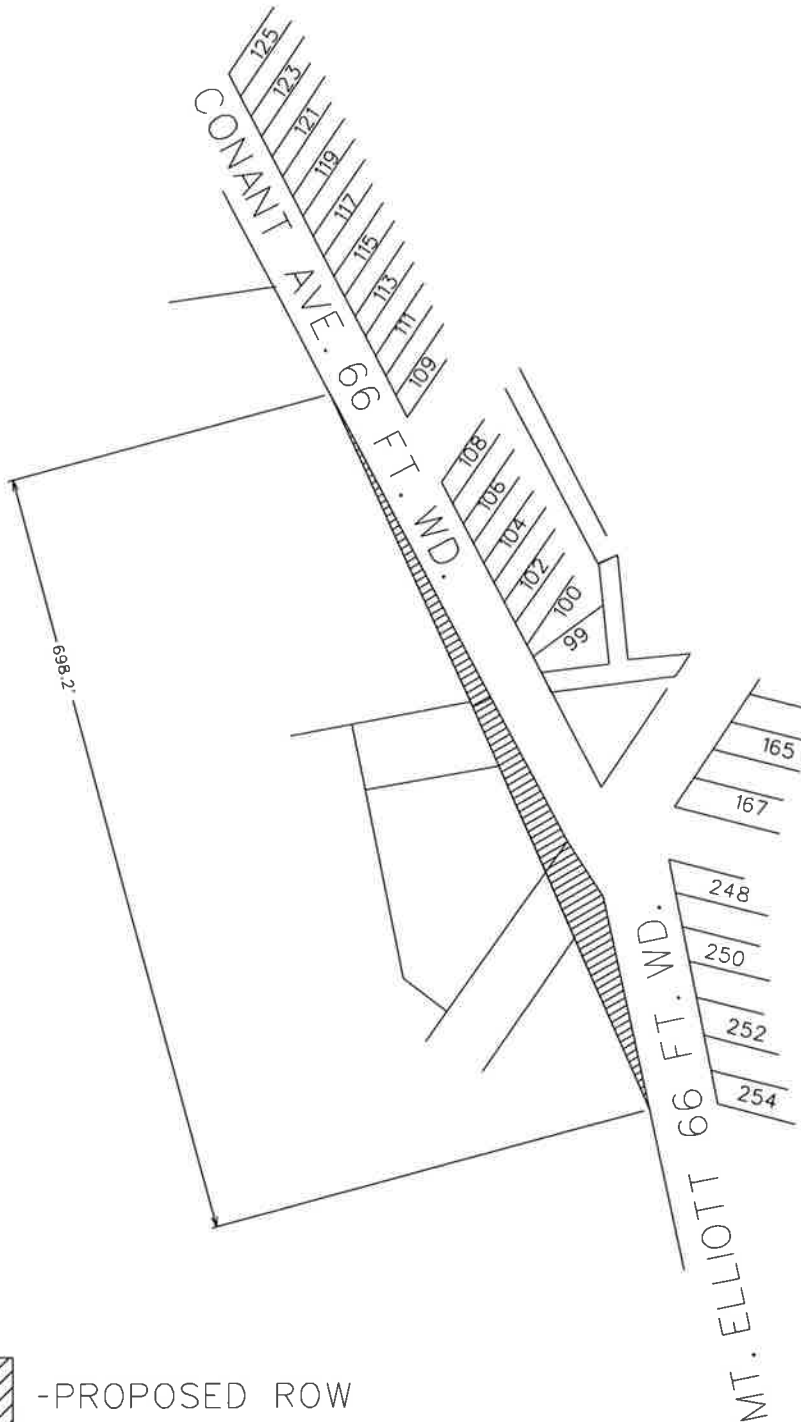


RAD 1423.00'
 ARC 15°48'16"
 CH 3392.52'
 CH 391.27'
 D 9°15'24"
 ARC 805.44'
 CH 804.57'
 C AN G N 34°10'54" W
 R A D 4985.50'
 PROPOSED R.O.W.
 EXIST. R.O.W.

DRAWING B ATTACH TO LEGAL DESCRIPTION
 OF NEW RIGHT OF WAY OF WEST CONANT AND
 MT ELLIOTT.



MAP-23-32



-PROPOSED ROW

(FOR OFFICE USE ONLY)

CARTO 49C

B					
A					
DESCRIPTION	DRWN	CHKD	APPD	DATE	
REVISIONS					
DRAWN BY	CHECKED				
MW	JD				
DATE	APPROVED				
03-10-2023	JD				

PROPOSED ROW ON W
CONANT AND MT. ELLIOTT

CITY OF DETROIT	
CITY ENGINEERING DIVISION	
SURVEY BUREAU	
JOB NO.	23-32
DRWG. NO.	