



CITY OF DETROIT  
DEPARTMENT OF PUBLIC WORKS  
CITY ENGINEERING DIVISION

COLEMAN A. YOUNG MUNICIPAL CENTER  
2 WOODWARD AVE, SUITE 601  
DETROIT, MICHIGAN 48226  
PHONE: (313) 224-3949 TTY: 711  
WWW.DETROITMI.GOV

To: Clerk's Office  
From: The Department of Public Works  
City Engineering Division  
MapsandRecordsBureau@DetroitMI.Gov  
(313) 224-3970

**Petitioner:**

City of Detroit: Department of Public Works  
2 Woodward Avenue, Suite 601  
Detroit, MI, 48226

On behalf of the above-mentioned petitioner the Department of Public Works: City Engineering Division is submitting a petition request for the action below. The petitioner has received a project consultation from the Department of Public Works: City Engineering Division and has been advised the following:

**Type of action recommended:**

Petition for the dedication of land, for right-of-way purposes, for the realignment of Mt. Elliott Street and Conant Street, between Strong Street and Klein Street. Said land dedication will include land from the properties commonly known as 2500 East Grand Blvd and 8001 Conant Street.

Jered Dean  
Manager II  
Department of Public Works  
City Engineering Division  
313-224-3985

## LEGAL DESCRIPTION

PART OF WEST R.O.W. OF CONANT 85 FT WD; ALSO, PART OF West R.O.W MT. ELLIOT street, LAND SITUATED IN THE CITY OF DETROIT, COUNTY OF WAYNE, STATE OF MICHIGAN, PART OF "CENTRAL INDUSTRIAL PARK SUBDIVISION AMENDED PLAT", LIBER 101 PAGE 78 RECORDED ON (WCR.), PART OF EAST LOT 1,

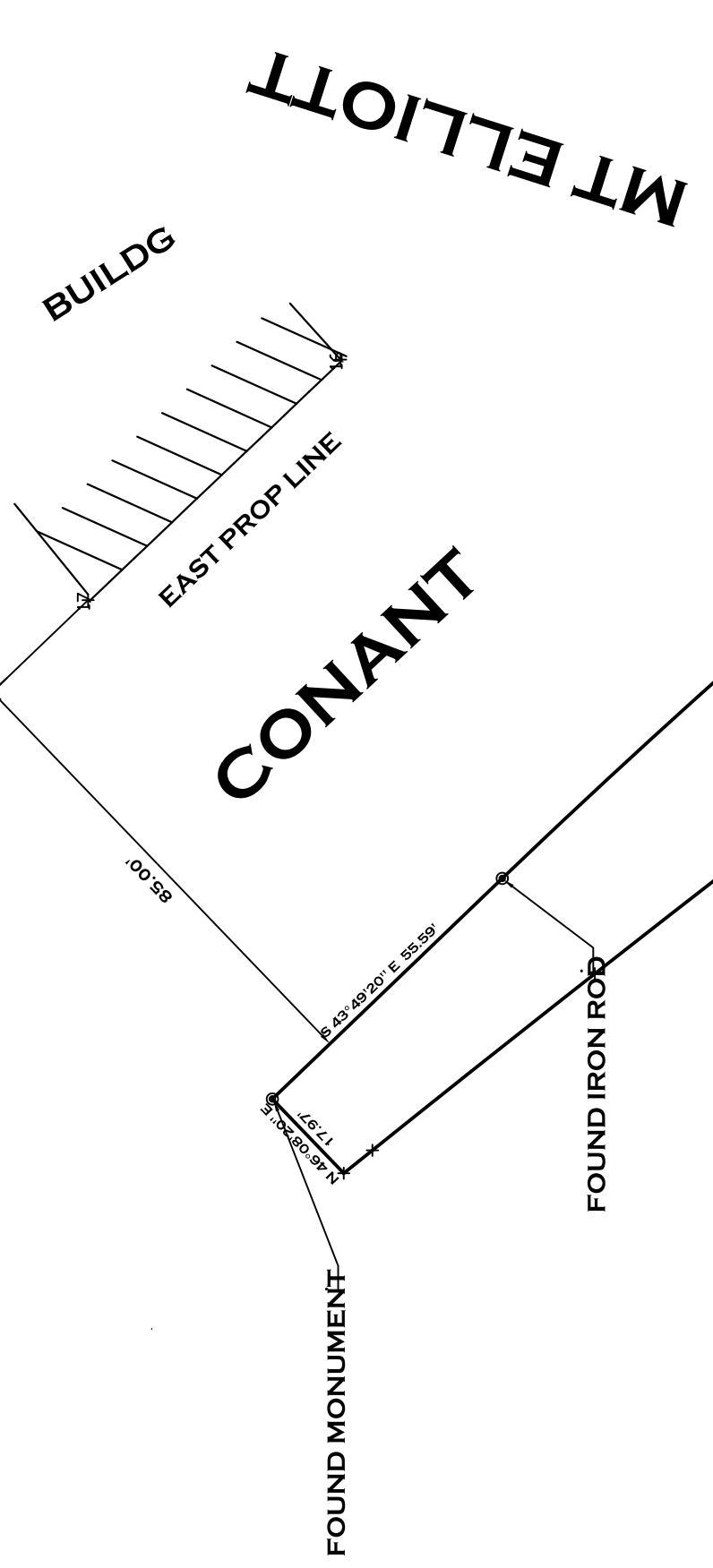
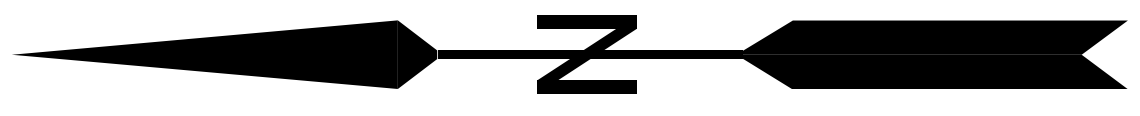
FRACTIONAL SECTION 28 T.1S, R.12E, PARTICULARLY DESCRIBED AS FOLLOWS:

Commencing at found iron rod on East line of Lot 1; thence N  $28^{\circ}13'10''$  W a distance of 89.39'to a POINT OF CURVATURE with a curve turning to the left with an arc length of 805.44', with a radius of 4985.50', with a chord bearing of N  $34^{\circ}10'54''$  W, with a chord length of 804.57', with a delta of  $9^{\circ}15'24''$ ; thence N  $46^{\circ}08'20''$  E a distance of 17.97' To existing Conant R.O.W. thence S  $43^{\circ}49'20''$  E a distance of 55.59'; thence with a curve turning to the right with an arc length of 392.52', with a radius of 1423.00', with a chord bearing of S  $35^{\circ}57'10''$  E, with a chord length of 391.27', with a delta of  $15^{\circ}48'16''$ ; thence S  $28^{\circ}00'32''$  E a distance of 363.81', which is the point of beginning, having an area of 16013.66 square feet, 0.368 acres.



*Basil*

5-3-2022



RAD 1423.00'  
ARC 15° 48' 16" E  
CH 392.52'  
C A H 391.27'

1601.54 FEET  
0.3676 ACRES

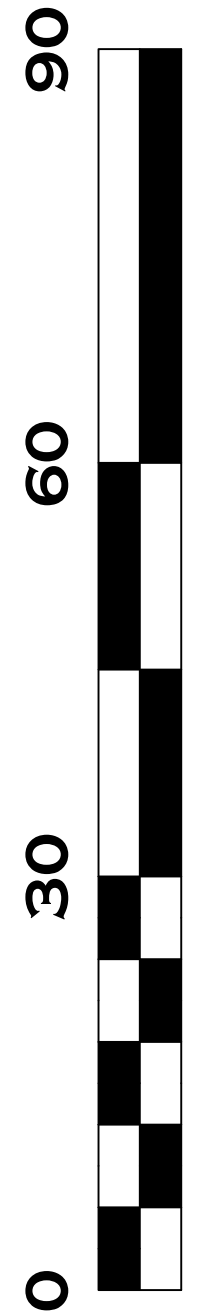
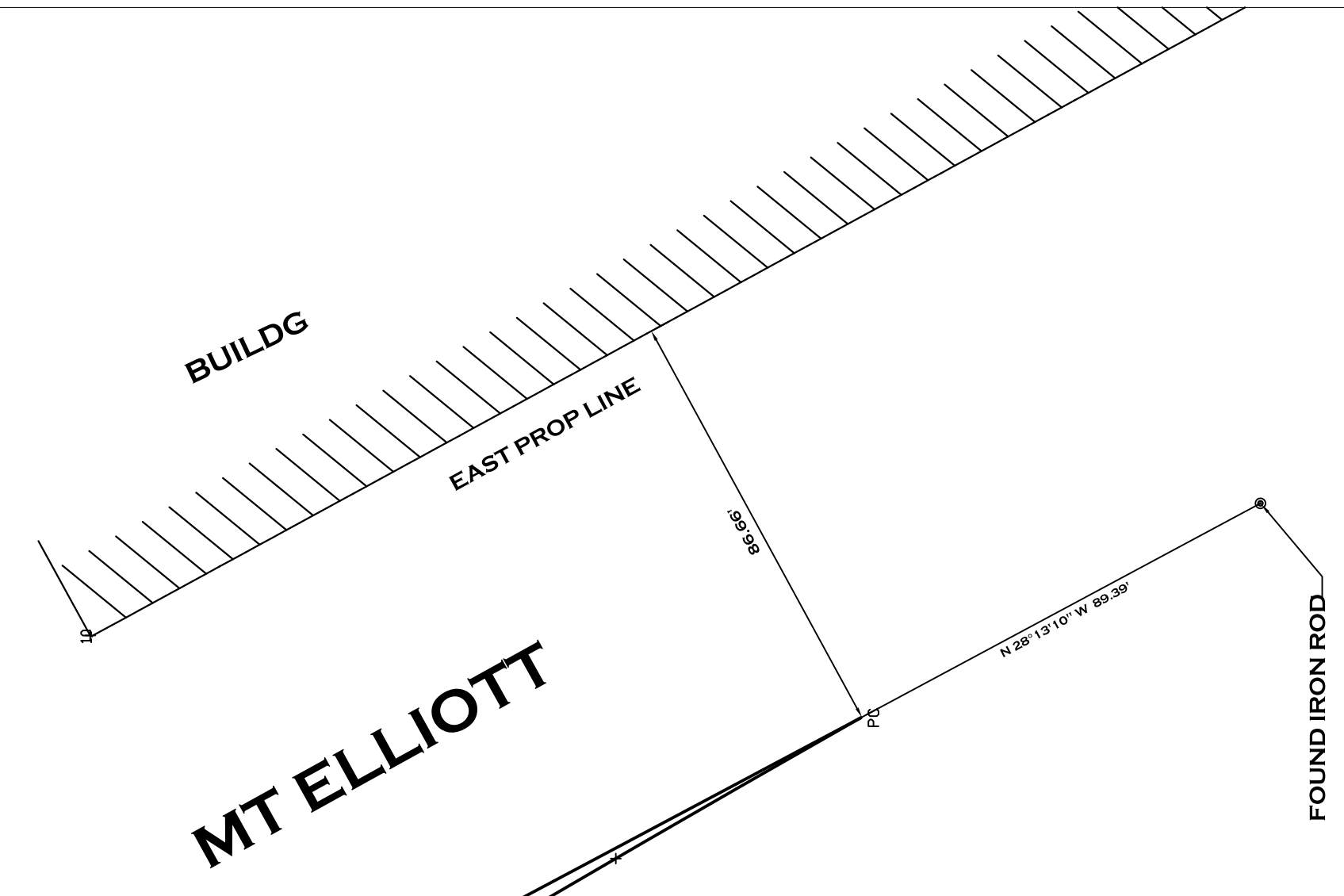
PROPOSED R.O.W.  
D 9° 15' 24" E  
ARC 805.44'  
CH 804.57'  
C A N G N 34° 10' 54" W  
RAD 4985.50'

EXIST R.O.W.

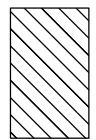
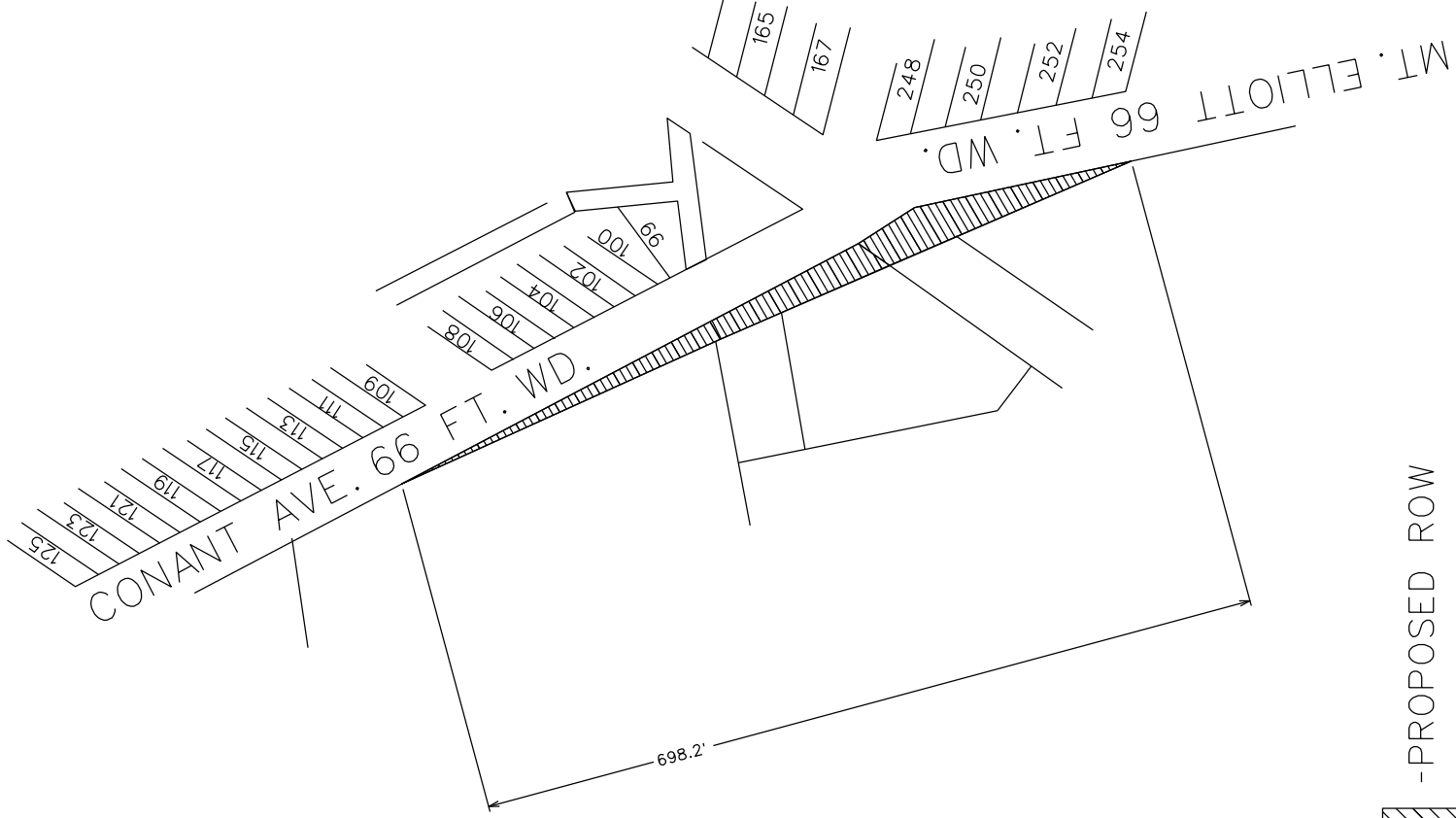
FOUND IRON ROD

S 20° 00' 32" E 265.81'

DRAWING ATTACH TO LEGAL DESCRIPTION  
OF NEW RIGHT OF WAY OF WEST CONANT AND  
MT ELLIOTT.



MAP-23-32



(FOR OFFICE USE ONLY)

CARTO 49C

<b>B</b>					
<b>A</b>	<b>DESCRIPTION</b>	<b>DRWN</b>	<b>CHKD</b>	<b>APPD</b>	<b>DATE</b>
	<b>REVISIONS</b>				
	<b>DRAWN BY</b>	<b>CHECKED</b>	<b>JD</b>		
	<b>DATE</b>	<b>APPROVED</b>	<b>JD</b>		
	03-10-2023				

PROPOSED ROW ON W  
CONANT AND MT. ELLIOTT

**CITY OF DETROIT**  
CITY ENGINEERING DIVISION  
SURVEY BUREAU

**JOB NO.** 23-32  
**DRWG.NO.**