

These documents or files have been created by and/or the exclusive intellectual property of ADCON. Any reproduction or distribution without the permission or supervision of any of the Firm's personnel may result in liability under applicable laws.

Shop Drawing for:
Chipotle Mexican Grill
Downtown Detroit
Store # 4503
620 Woodward Ave., Suite 620
Detroit, MI 48226

Sign Type: _____ Blade sign

Date: _____ September 29, 2023
Drawn by: _____ Charles L.
Account Manager: _____ Kristi M.
Project Manager: _____
File Name: _____ 2fl Blade Medallion

Client Approval

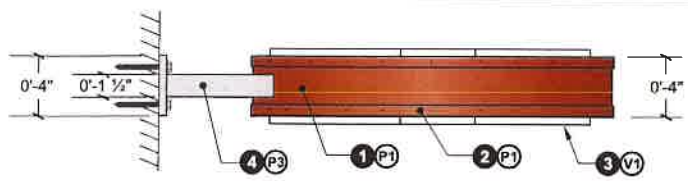
NOTE: Please ensure all red line changes are noted on this drawing prior to returning to ADCON. Subsequent to ADCON incorporating the red line changes requested on this drawing, any further changes will result in additional billing at the rate of \$86 per hour.

Approved
 Approved As Noted
 Revise And Resubmit

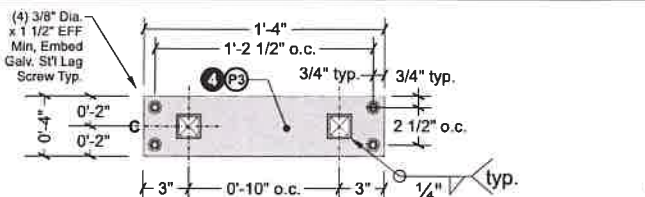
| Production Mgr. Approval | Date |
|--------------------------|------|
| | |
| Project Mgr. Approval | Date |
| | |
| Account Mgr. Approval | Date |
| | |
| P&D Mgr. Approval | Date |
| | |

Revision Notes:
Added engineering details

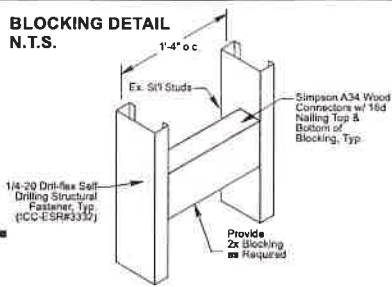
Dot No.
W.O. No. **5019**
Rev. No. **D** Date: 12-27-23 By: CCL
Sheet No. **5.0**



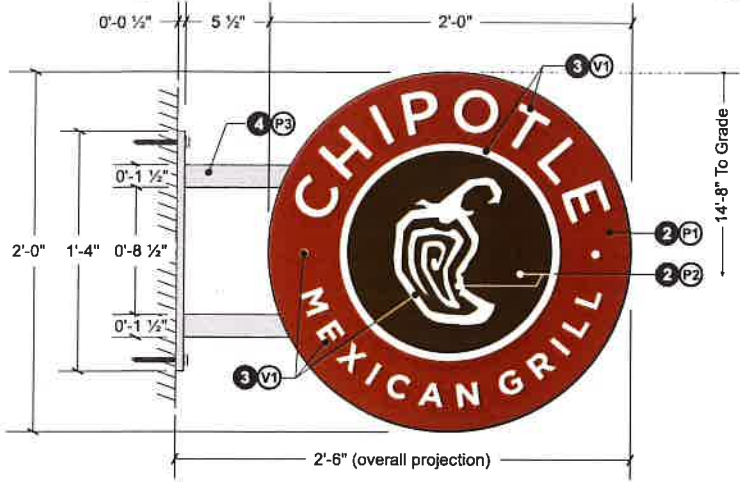
1 PLAN VIEW
5.0 SCALE: 1 1/2" = 1'-0"



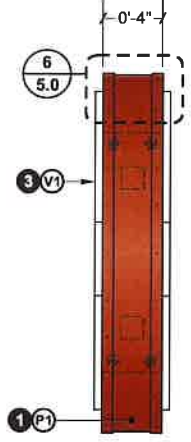
2 1/2" ALUMINUM MOUNTING PLATE
5.0 SCALE: 1 1/2" = 1'-0"



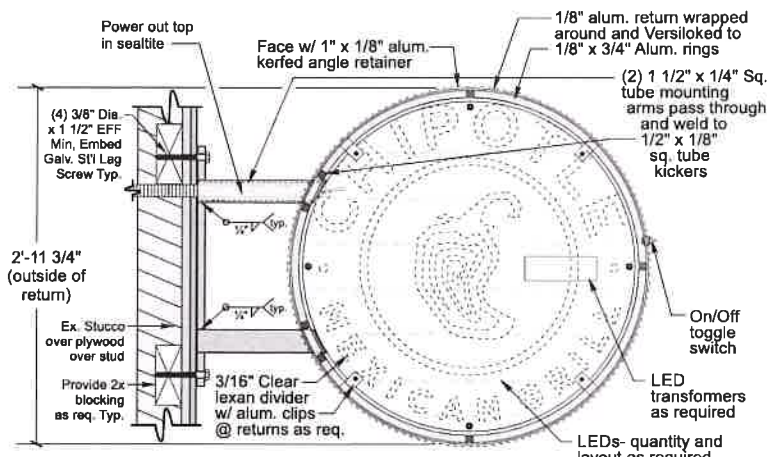
BLOCKING DETAIL
N.T.S.



3 MEDALLION ELEVATION
5.0 SCALE: 1 1/2" = 1'-0"



4 END VIEW
5.0 SCALE: 1 1/2" = 1'-0"



5 FRAME ELEVATION
5.0 SCALE: 1 1/2" = 1'-0"

SPECIFICATIONS FOR (1) ILLUMINATED D/F PROJECTING BLADE MEDALLION

- 1 CABINET**= 1/8" Alum. rings kicked apart w/ 1/2" x 1/8" sq. tube braces and wrapped w/ 1/8" alum. returns. 4" DEPTH
 - 2 FACE**= 1/8" Aluminum w/ kerfed 3/4" x 1/8" alum. angle retainer.
 - 3 GRAPHICS**= Water jet-cut 3/4" Clear acrylic push-thru (w/ first surface vinyl overlay) bonded to Milk White acrylic backer
ILLUMINATION= Principal LED "Qwik Mod 2" 7100K White LEDs mounted to 3/16" clear lexan divider
 - 4 ARMATURE**= 1/2" Alum. wall plate w/ (2) 1 1/2" x 1/4" Alum. sq. tube arms
- MOUNTING**= Medallion assembly bolts flush to wall w/ 3/8" Galv. St'l Lag screw as req. 1 1/2" min. embed. Blocking added behind ex. fascia.
- PRIMARY ELECTRICAL**= 120V electrical to sign and final hook up is by others. Leave 6'-0" power lead out mounting arm
- SECONDARY ELECTRICAL**= 12VDC LED transformers and all wiring mounted to cabinet divider
- POWER DISCONNECT**= Toggle switch on right side cabinet return

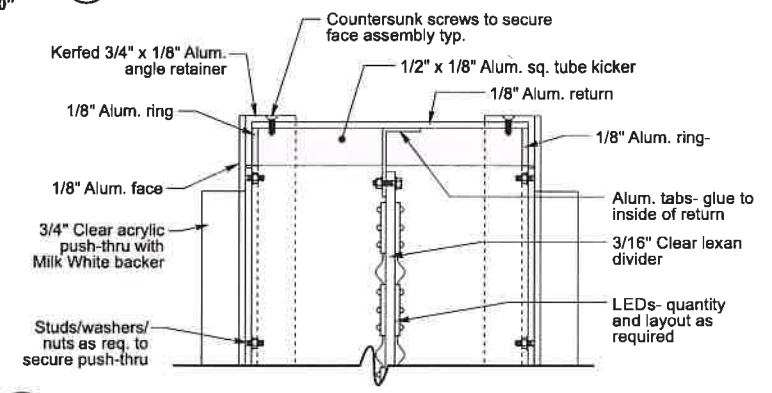
COLOR SPECIFICATIONS

- P1** P.T.M. PMS #484C "Roasted Red"
- P2** P.T.M. PMS #4625C "Adobo Brown"
- P3** P.T.M. MAP "Brushed Aluminum"
- V1** First surface 3M #3630-20 White vinyl overlay

NOTE: Paint all exposed fasteners to match adjacent finish

SURVEY OF PROPERTY REQUIRED TO CONFIRM EXTERIOR MOUNTING LOCATION MEASUREMENTS.

NO PENETRATIONS IN HISTORIC CAST PILASTER COLUMNS



6 FRAME SECTION ENLARGEMENT
5.0 SCALE: NO SCALE