



CITY OF DETROIT
DEPARTMENT OF PUBLIC WORKS
CITY ENGINEERING DIVISION

COLEMAN A. YOUNG MUNICIPAL CENTER
2 WOODWARD AVE. SUITE 601
DETROIT, MICHIGAN 48226
PHONE: (313) 224-3949 TTY: 711
WWW.DETROITMI.GOV

To: Clerk's Office
From: The Department of Public Works
City Engineering Division
MapsandRecordsBureau@DetroitMI.Gov
(313) 224-3970

Petitioner:
City of Detroit: Department of Public Works
2 Woodward, Suite 642
Detroit, MI, 48226

On behalf of the above-mentioned petitioner the Department of Public Works: City Engineering Division is submitting a petition request for the action below. The petitioner has received a project consultation from the Department of Public Works: City Engineering Division and has been advised the following:

Type of action recommended:

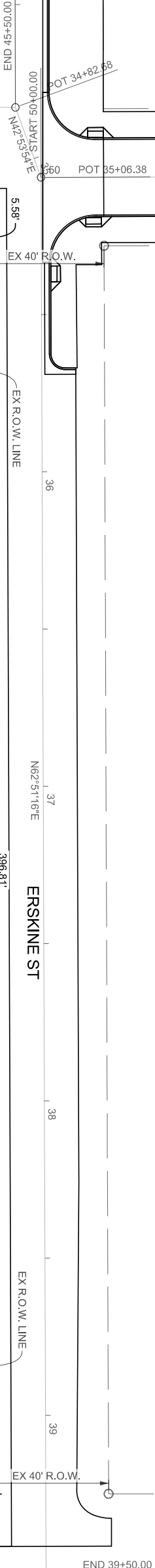
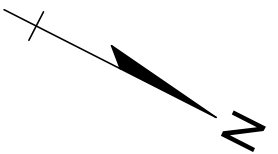
Petition for the dedication of land, for right-of-way purposes and widening of Erskine Street, being part of the properties commonly known as 1580 Wilkins Street and 3101 Orleans Street.

Jered Dean
Manager II
Department of Public Works
City Engineering Division
313-224-3985

RIOPELLE ST

LAND SITUATED IN THE CITY OF DETROIT, COUNTY OF WAYNE, STATE OF MICHIGAN, PARTICULARLY DESCRIBED AS FOLLOWS:

COMMENCING AT SW CORNER OF LOT 94, SUBDIVISION OF LOTS 55 & 56; THENCE NORTH 60°43'45" EAST, 43.60 FEET ACROSS THE WIDTH OF RIOPELLE STREET TO THE SW CORNER OF LOT 20 OF CRANES SUBDIVISION; THENCE SOUTH 27°04'39" EAST, 40.0 FEET ACROSS THE WIDTH OF ERSKINE STREET TO THE POINT OF BEGINNING, AND IS THE NW CORNER OF LOT 21 OF THE SOUTH LINE OF ERSKINE STREET R.O.W. OF SAID SUBDIVISION; THENCE NORTH 62°51'18" EAST A DISTANCE OF 396.81 FEET; THENCE SOUTH 27°04'39" EAST A DISTANCE OF 33.20 FEET; THENCE NORTH 72°08'31" WEST A DISTANCE OF 18.66 FEET; THENCE SOUTH 62°51'18" WEST A DISTANCE OF 375.98 FEET; THENCE SOUTH 17°53'20" WEST A DISTANCE OF 18.68 FEET; THENCE NORTH 27°04'39" WEST A DISTANCE OF 33.20 FEET; THENCE NORTH 62°51'18" EAST A DISTANCE OF 5.58 FEET TO THE POINT OF BEGINNING.



PROPOSED STREET & SIDEWALK EASEMENT

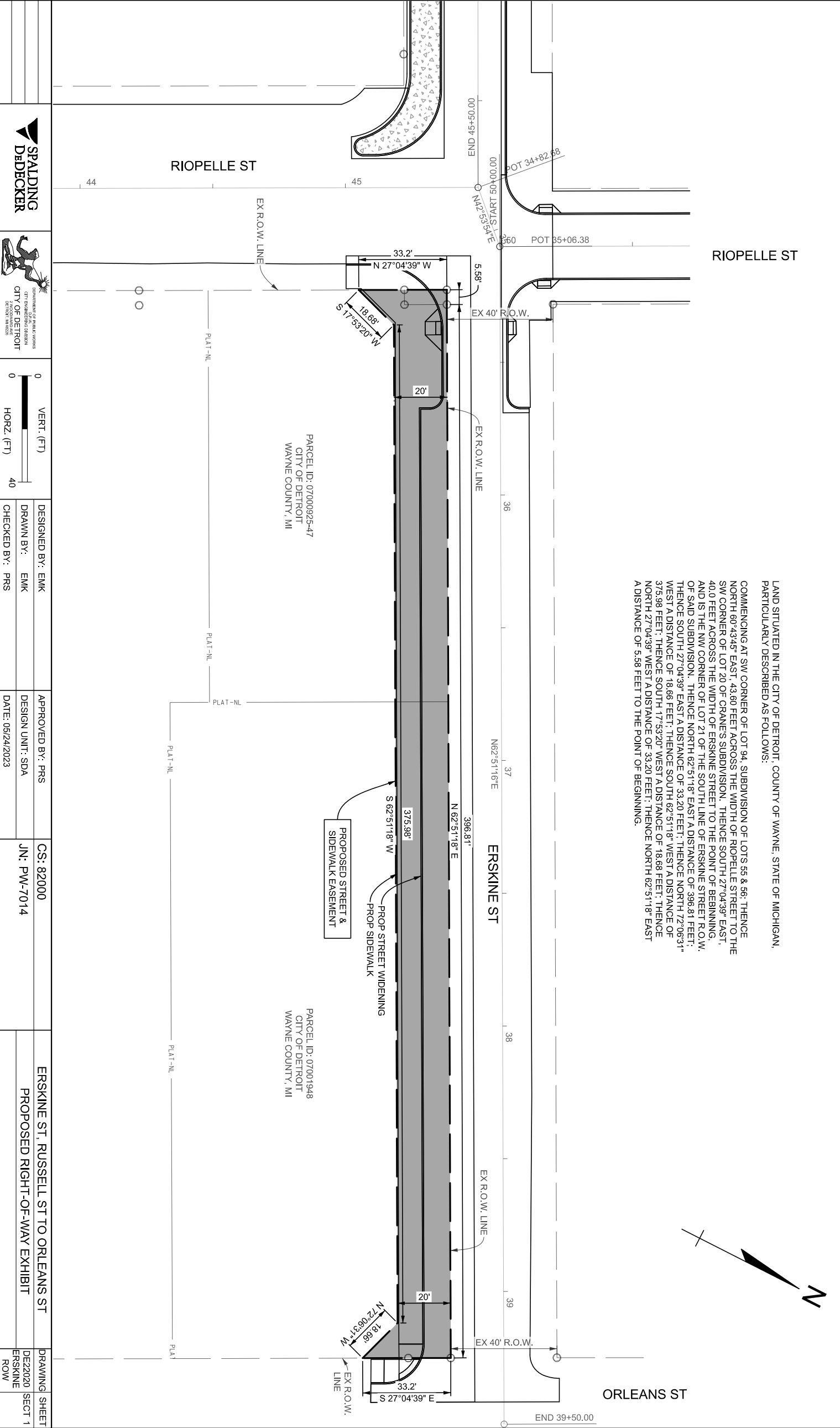
PROP STREET WIDENING
PROP SIDEWALK

PARCEL ID: 07000925-47
CITY OF DETROIT
WAYNE COUNTY, MI

PARCEL ID: 07001948
CITY OF DETROIT
WAYNE COUNTY, MI

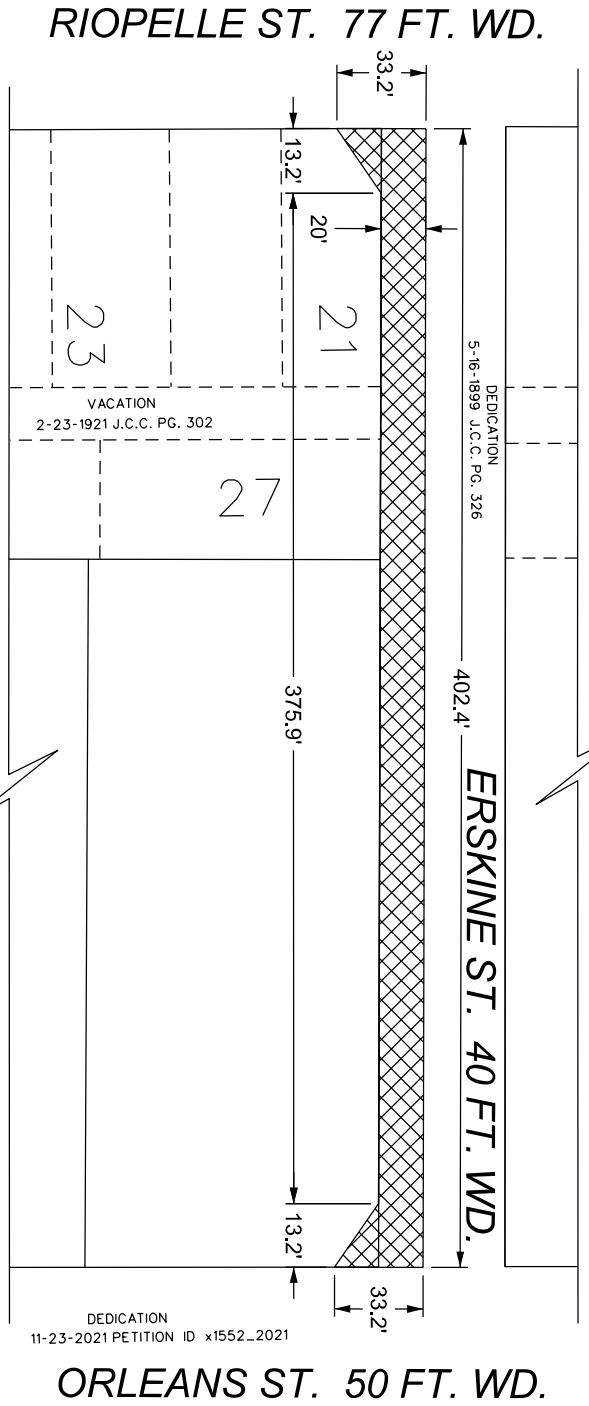
RIOPELLE ST

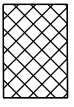
ORLEANS ST



				DESIGNED BY: EMK DRAWN BY: EMK CHECKED BY: PRS		APPROVED BY: PRS DESIGN UNIT: SDA DATE: 05/24/2023		CS: 82000 JN: PW-7014		ERSKINE ST, RUSSELL ST TO ORLEANS ST PROPOSED RIGHT-OF-WAY EXHIBIT		DRAWING SHEET DE22020 SECT 1 ERSKINE ROW	
--	--	--	--	--	--	--	--	--------------------------	--	---	--	--	--

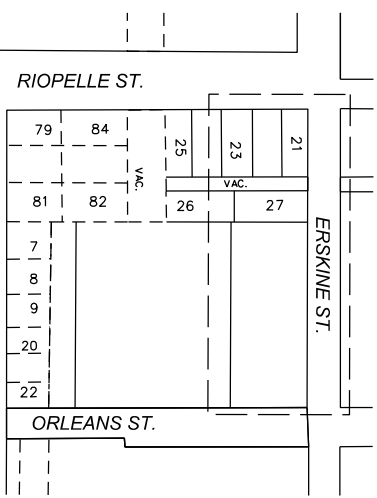




 - REQUEST STREET DEDICATION

(FOR OFFICE USE ONLY)

REQUEST DEDICATION OF PUBLIC STREET
 ERSKINE ST. FROM RIOPELLE ST
 TO ORLEANS ST.



CARTO 39C

B				
A				
DESCRIPTION		DRAWN	CHECKD	APPD
REVISIONS				DATE
DRAWN BY	AP	CHECKED	LC	
DATE	11-17-2023	APPROVED	JD	

CITY OF DETROIT
 CITY ENGINEERING DIVISION
 SURVEY BUREAU

JOB NO. 23-164

DRWG. NO.