

# City of Detroit

Janice M. Winfrey  
City Clerk

OFFICE OF THE CITY CLERK

Andre P. Gilbert II  
Deputy City Clerk

## DEPARTMENT PETITION REFERENCE COMMUNICATION

*To: The Department or Commission Listed Below*

*From: Janice M Winfrey, Detroit City Clerk*

---

The following petition is herewith referred to you for report and recommendation to the City Council.

In accordance with that body's directive, kindly return the same with your report in duplicate within four (4) weeks.

---

Petition No.	2024-051
Name of Petitioner	Bagley & 16th LLC
Description of Petition	Petition for Encroachment on the northwest corner of the intersection of Bagley Avenue and 16th Street, adjacent to the property commonly known as 2420 Bagley, for the purpose of installing an On-Site advertising sign.
Type of Petition	<b>Alley Vacation/Encroachment/Utility Vacation</b>
Submission Date	02/12/2024
Concerned Departments	Department of Public Works, Planning and Development Department, City Engineering Division
Petitioner Contact	Inter City Neon P.O. BOX 3762 CENTERLINE, MICHIGAN 48015-0762 Phone: (586) 754-6020 FAX (586) 754-7436 <a href="http://www.intercityneon.com">www.intercityneon.com</a>



**CITY OF DETROIT  
DEPARTMENT OF PUBLIC WORKS  
CITY ENGINEERING DIVISION**

**COLEMAN A. YOUNG MUNICIPAL CENTER  
2 WOODWARD AVE. SUITE 601  
DETROIT, MICHIGAN 48226  
PHONE: (313) 224-3949 TTY: 711  
WWW.DETROITMI.GOV**

---

To: Clerk's Office  
From: The Department of Public Works  
City Engineering Division  
MapsandRecordsBureau@DetroitMI.Gov  
(313) 224-3970

Petitioner:  
Bagley & 16<sup>th</sup> LLC  
1528 Woodward Avenue  
Detroit, MI, 48216

On behalf of the above-mentioned petitioner the Department of Public Works: City Engineering Division is submitting a petition request for the action below. The petitioner has received a project consultation from the Department of Public Works: City Engineering Division and has been advised the following:

Type of action recommended:

Petition for Encroachment on the northwest corner of the intersection of Bagley Avenue and 16<sup>th</sup> Street, adjacent to the property commonly known as 2420 Bagley, for the purpose of installing an On-Site advertising sign.

Jered Dean  
Manager II  
Department of Public Works  
City Engineering Division  
313-224-3985



# INTERCITY NEON

DESIGNERS - BONDED ERECTORS - MANUFACTURERS - QUALITY SIGNS

---

P.O. BOX 3762 - CENTERLINE, MICHIGAN 48015-0762

(586) 754-6020 - FAX (586) 754-7436

[www.intercityneon.com](http://www.intercityneon.com)

**December 21, 2023**

**Department of Public Works**

**RE: 2420 Bagley Encroachment request**

**SGN2022-00478**

**We are requesting an encroachment approval to erect & install a blade sign on the corner of the The Brooke on Bagley at 2420 Bagley Rd.**

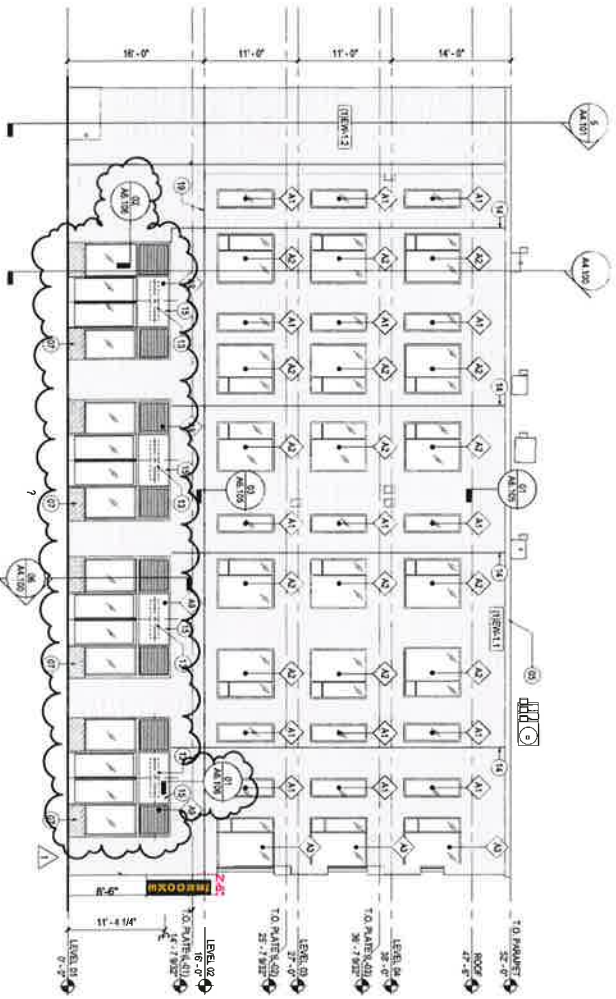
**The sign will be 8'-6" above the sidewalk.**

**Thank you,**

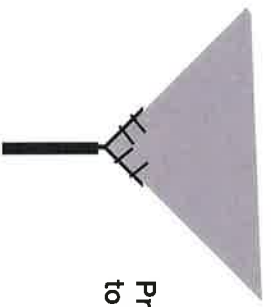
**Donna Holke**

**Intercity Neon**

**[donna@intercityneon.com](mailto:donna@intercityneon.com)**

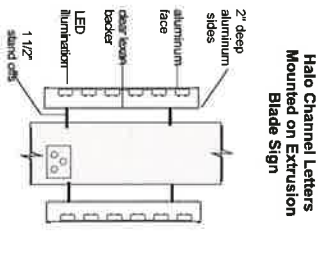


Owner & tenant agree maximum illumination for this sign will not exceed 3500 NITS during the hours of Gam - 10pm or 40 NITS from 10pm - Gam

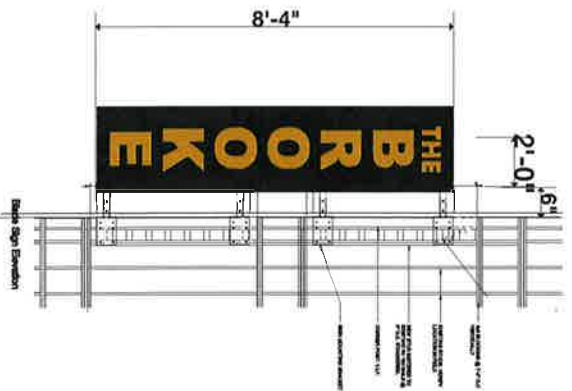


Projecting sign mounted to corner of building

The Brooke on Bagley  
 2420 Bagley  
 Detroit, MI



Side Elevation - No Scale

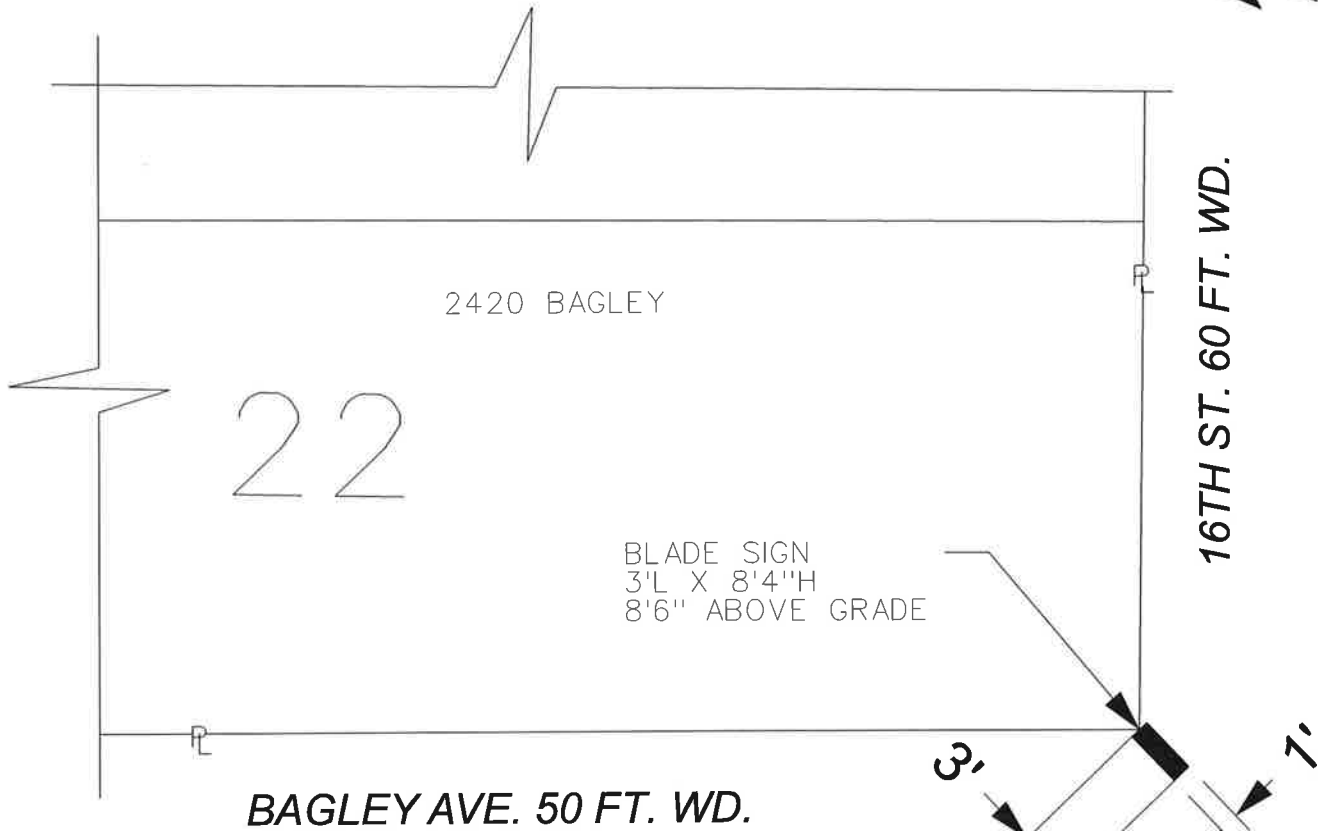


Aluminum extruded sign cabinet with halo lit letters mounted to both sides

10-20-2023

**INTERCITY NEON**  
 P.O. Box 3782  
 Centerville, MI 48015  
 Ph: 586-754-6020  
 Fax: 586-754-7436  
[www.intercityneon.com](http://www.intercityneon.com)





**■ - REQUEST ENCROACHMENT**  
(For above grade blade sign)

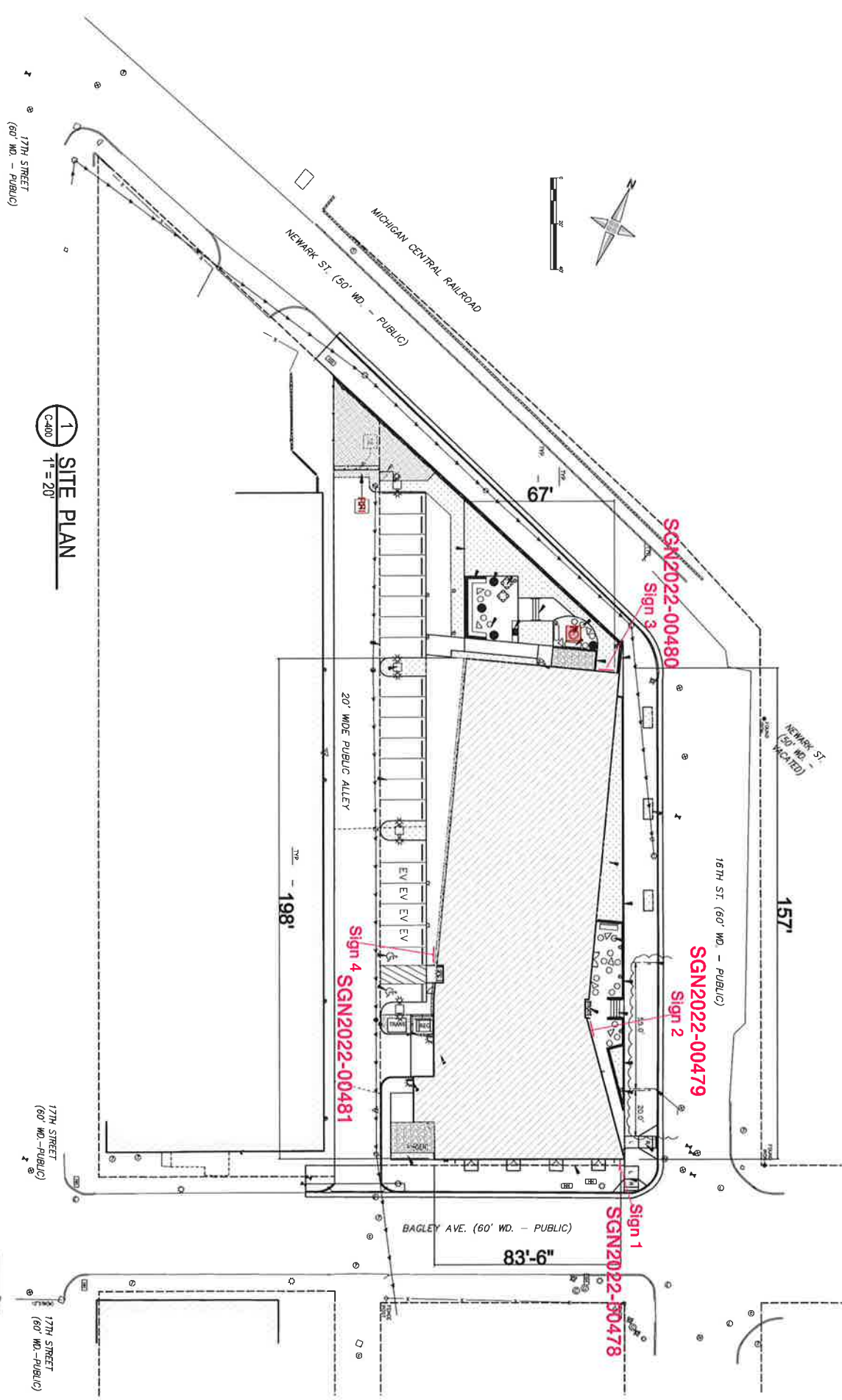
(FOR OFFICE USE ONLY)

CARTO 18 B

B					
A					
DESCRIPTION		DRWN	CHKD	APPD	DATE
REVISIONS					
DRAWN BY	LC	CHECKED		AP	
DATE	12-21-2023	APPROVED		JD	

**REQUEST ENCROACHMENT  
INTO BAGLEY AVE. AND  
16TH ST. AT 2420 BAGLEY**

<b>CITY OF DETROIT</b>	
CITY ENGINEERING DIVISION	
SURVEY BUREAU	
JOB NO.	23-174
DRWG. NO.	

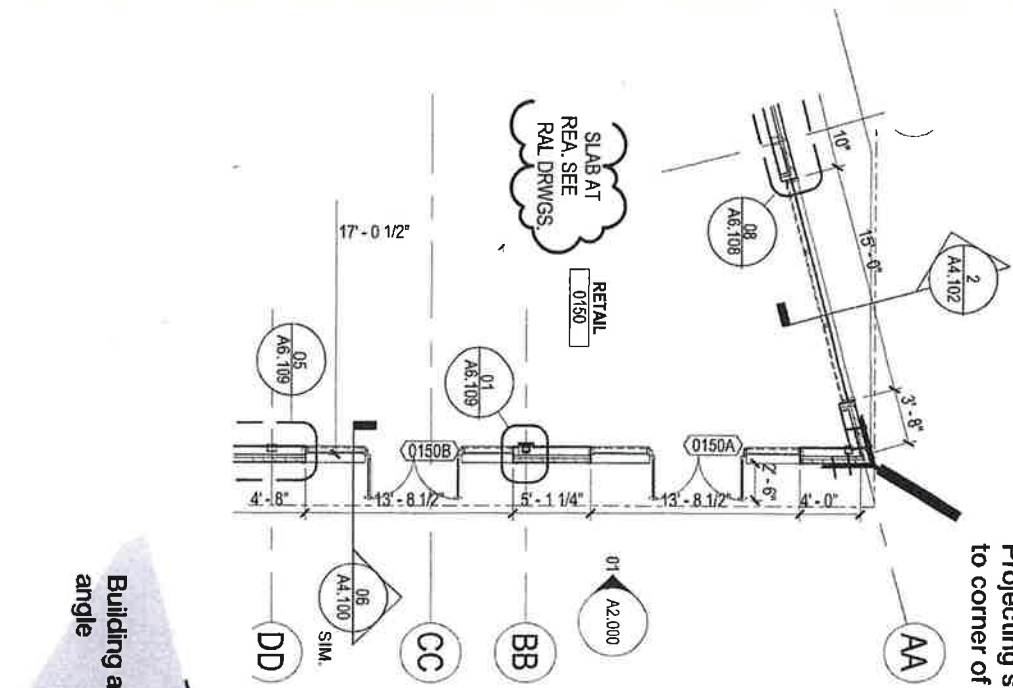


1 SITE PLAN  
C-400 1" = 20'

The Brooke on Bagley  
2420 Bagley  
Detroit, MI

 INTERCITY NEON  
P.O. Box 3762  
Centerline, MI 48015  
ph: 586-754-6020  
fax: 586-754-7436  
www.intercityneon.com

**Projecting sign mounted to corner of building**



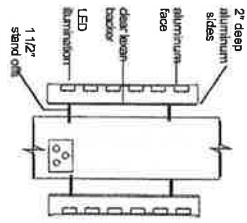
(3) 3" square tubes from sign mounting to wall  
 1/4" thick mounting plates with  
 Grade 5 bolts attached to wall & corner beam

Face of brick to face of steel tube is 8.75"  
 1.5" metal framing  
 .625" DensGlass  
 .625" DensGlass  
 6" air gap / Brick



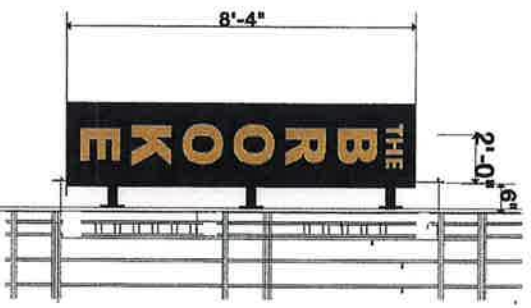
Corner beam is HSS 6 x 6 x 5/8"

**Halo Channel Letters Mounted on Extrusion Blade Sign**

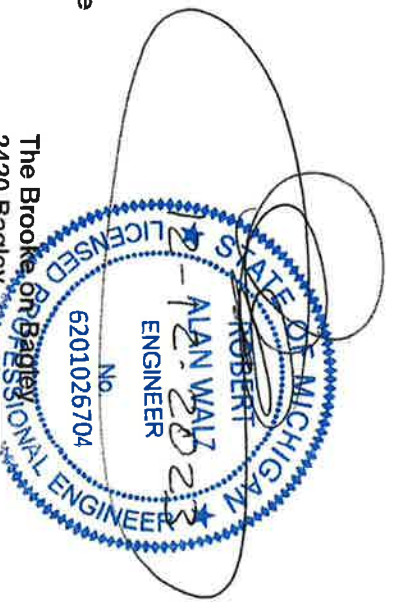


Side Elevation - No Scale

Owner & Inventor agree that the sign will not exceed 3500 NITS during the hours of 6am - 10pm or 40 NITS from 10pm - 6am



Aluminum extruded sign cabinet with halo lit letters mounted to both sides



The Brooke Bagley  
 2420 Bagley  
 Detroit, MI  
 10-20-2023

INTERCITY NEON  
 P.O. Box 3782  
 Commerce, MI 48015  
 ph: 586-754-6020  
 fax: 586-754-7436  
 www.intercityneon.com



## The Brooke Sign Calculations

Sign Size			
Height	8.33	feet	
Length	3	feet	
Total Area of Sign	25	sqft	
Wind Load on Sign	115	mph	Exposure B
Wind Load converted to PSF	35	psf	
Weight of Sign	375	pounds	
Total Wind Load on Sign	875	pounds	
Wind Load is resisted by six 1/2" Grade 5 bolts			
Wind Load per Bolt	146	pounds	
Shear Strength of one 1/2" Diameter Bolt	12100	pounds	
Tensile Strength of one 1/2" Diameter Bolt	17000	pounds	
Shear Strength of 6 Grade 5 Bolts	72600	pounds	
Tensile Strength of 6 Grade 5 Bolts	102000	pounds	

Both Shear and Tensile Strength of Grade 5 Bolts exceeds applied load and will support the sign

