



CITY OF DETROIT
DEPARTMENT OF PUBLIC WORKS
CITY ENGINEERING DIVISION

COLEMAN A. YOUNG MUNICIPAL CENTER
2 WOODWARD AVE. SUITE 601
DETROIT, MICHIGAN 48226
PHONE: (313) 224-3949 TTY: 711
WWW.DETROITMI.GOV

To: Clerk's Office
From: The Department of Public Works
City Engineering Division
MapsandRecordsBureau@DetroitMI.Gov
(313) 224-3970

Petitioner:
Bagley & 16th LLC
1528 Woodward Avenue
Detroit, MI, 48216

On behalf of the above-mentioned petitioner the Department of Public Works: City Engineering Division is submitting a petition request for the action below. The petitioner has received a project consultation from the Department of Public Works: City Engineering Division and has been advised the following:

Type of action recommended:

Petition for Encroachment on the northwest corner of the intersection of Bagley Avenue and 16th Street, adjacent to the property commonly known as 2420 Bagley, for the purpose of installing an On-Site advertising sign.

Jered Dean
Manager II
Department of Public Works
City Engineering Division
313-224-3985



INTERCITY NEON

DESIGNERS - BONDED ERECTORS - MANUFACTURERS - QUALITY SIGNS

P.O. BOX 3762 - CENTERLINE, MICHIGAN 48015-0762

(586) 754-6020 - FAX (586) 754-7436

www.intercityneon.com

December 21, 2023

Department of Public Works

RE: 2420 Bagley Encroachment request

SGN2022-00478

We are requesting an encroachment approval to erect & install a blade sign on the corner of the The Brooke on Bagley at 2420 Bagley Rd.

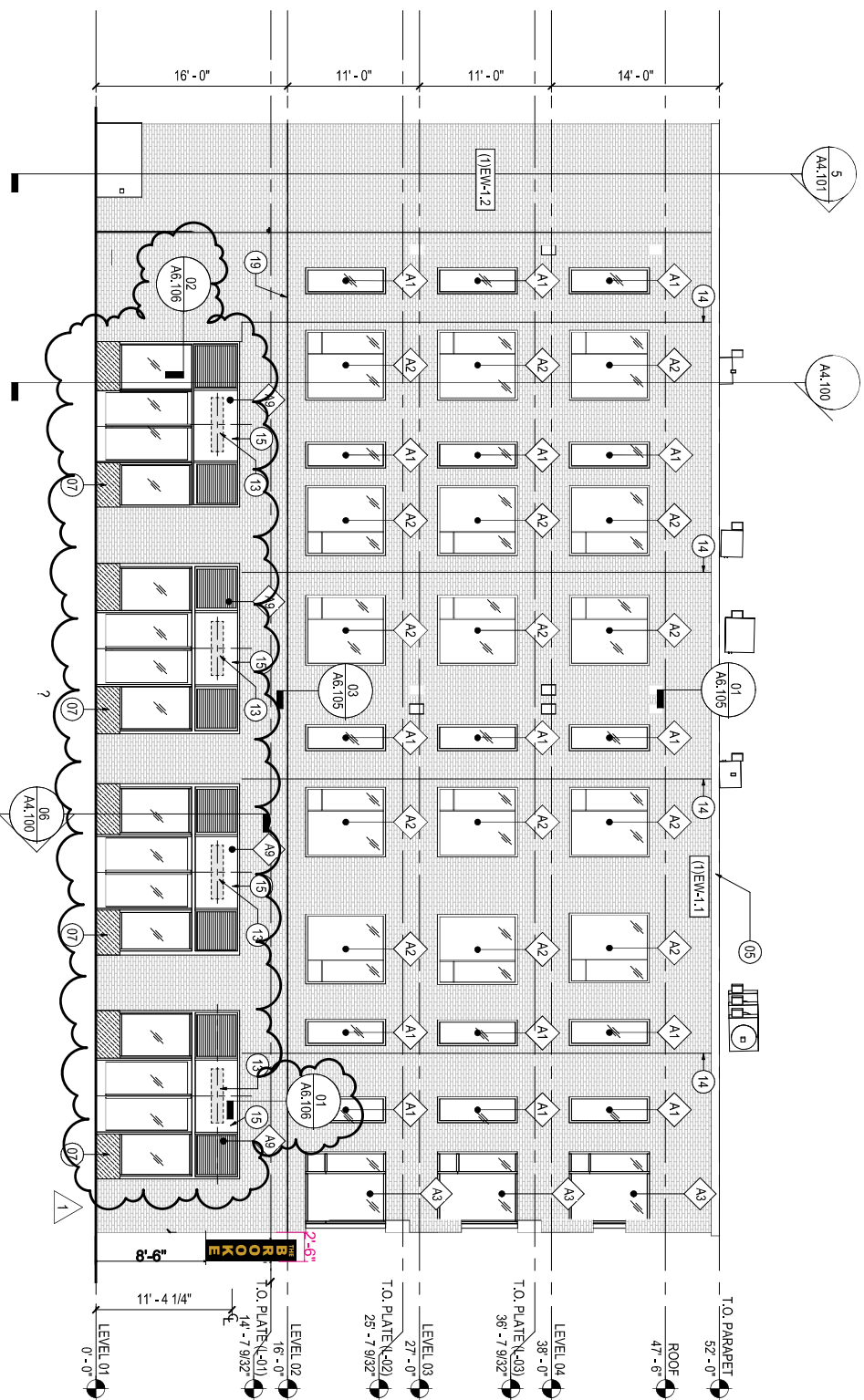
The sign will be 8'-6" above the sidewalk.

Thank you,

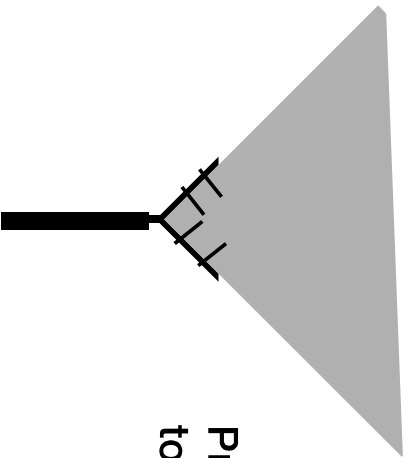
Donna Holke

Intercity Neon

donna@intercityneon.com



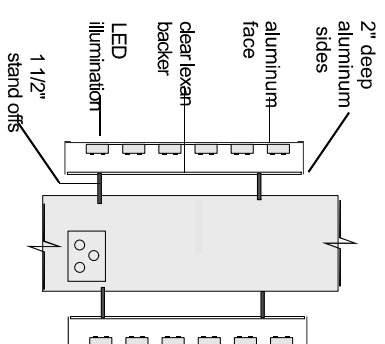
Owner & tenant agree maximum illumination for this sign will not exceed 3500 NITS during the hours of Gam - 10pm or 40 NITS from 10pm - 6am



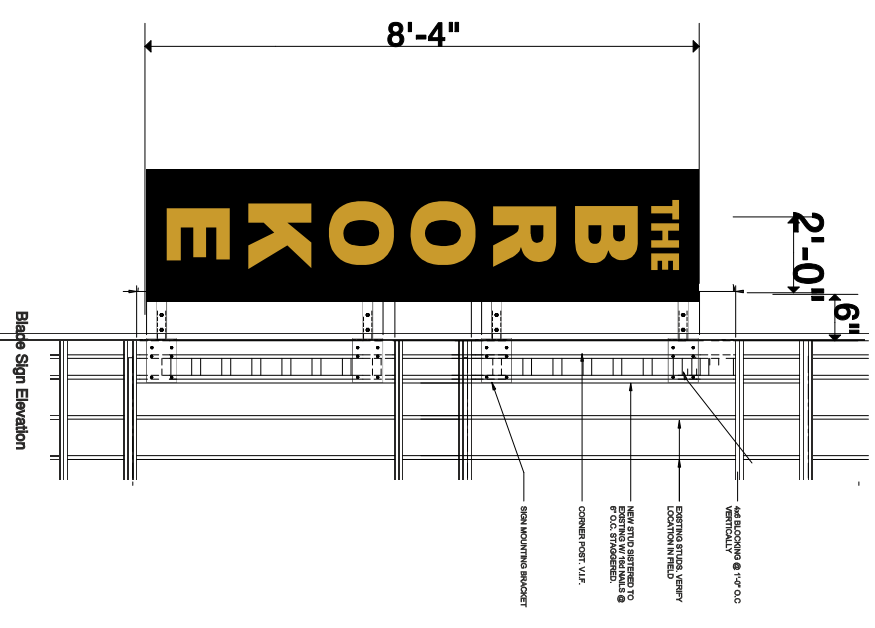
Projecting sign mounted to corner of building

The Brooke on Bagley
2420 Bagley
Detroit, MI

Halo Channel Letters Mounted on Extrusion Blade Sign



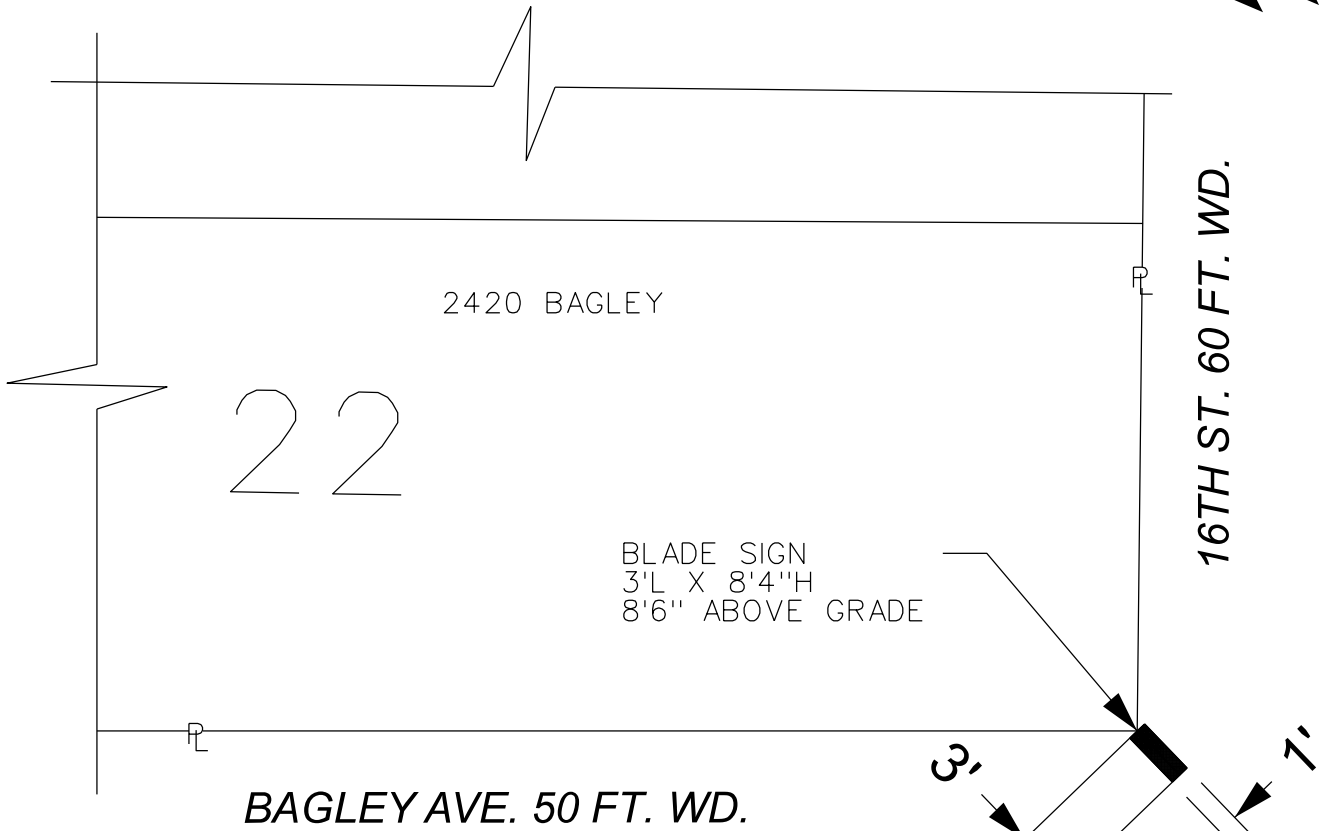
Side Elevation - No Scale



Aluminum extruded sign cabinet with halo lit letters mounted to both sides

10-20-2023

MAP-23-174



 - REQUEST ENCROACHMENT
(For above grade blade sign)

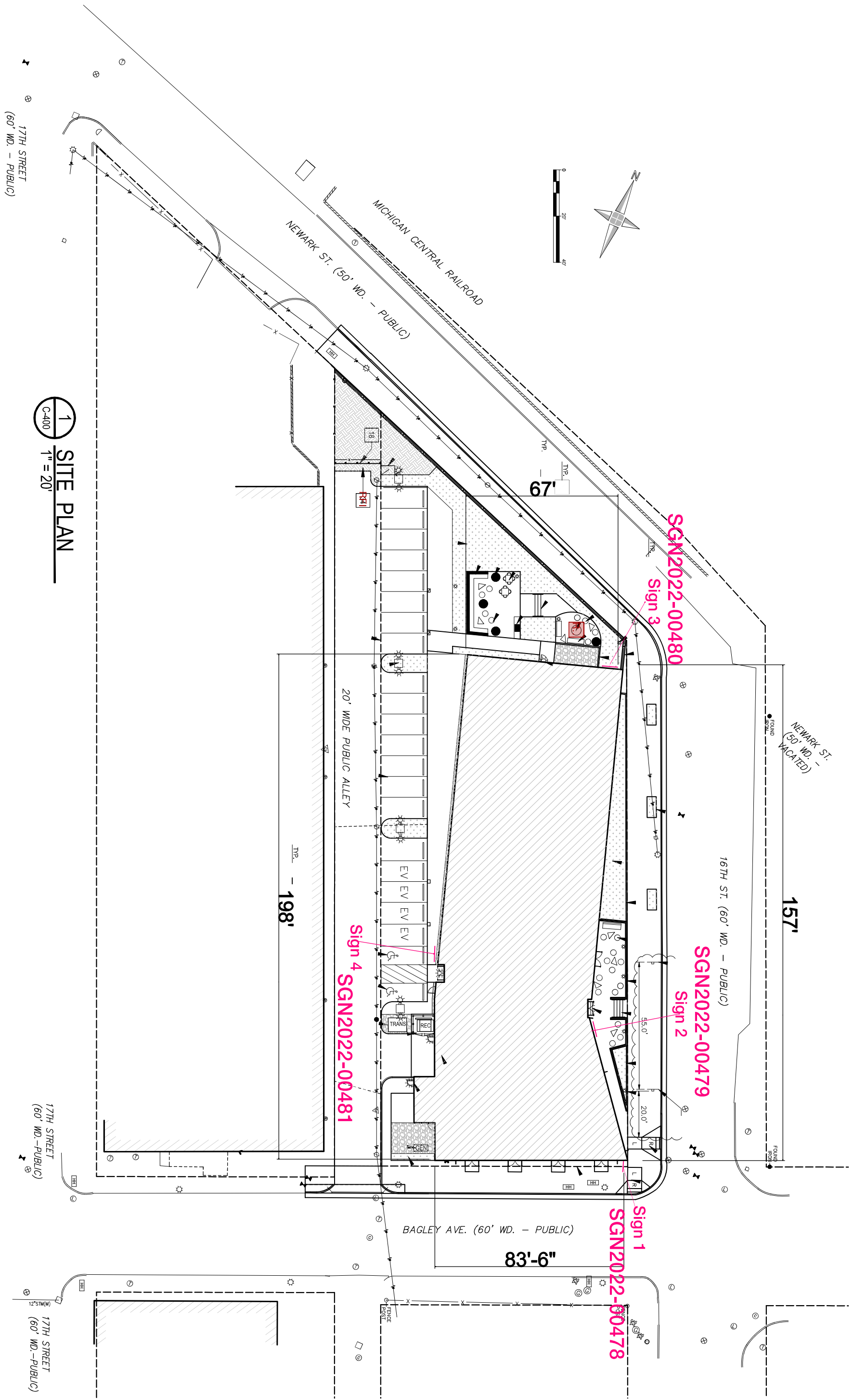
(FOR OFFICE USE ONLY)

CARTO 18 B

| B | | | | | |
|-------------|------------|----------|------|------|--|
| A | | | | | |
| DESCRIPTION | DRWN | CHKD | APPD | DATE | |
| REVISIONS | | | | | |
| DRAWN BY | LC | CHECKED | AP | | |
| DATE | 12-21-2023 | APPROVED | JD | | |

**REQUEST ENCROACHMENT
INTO BAGLEY AVE. AND
16TH ST. AT 2420 BAGLEY**

| | |
|--|--------|
| CITY OF DETROIT CITY ENGINEERING DIVISION SURVEY BUREAU | |
| JOB NO. | 23-174 |
| DRWG. NO. | |

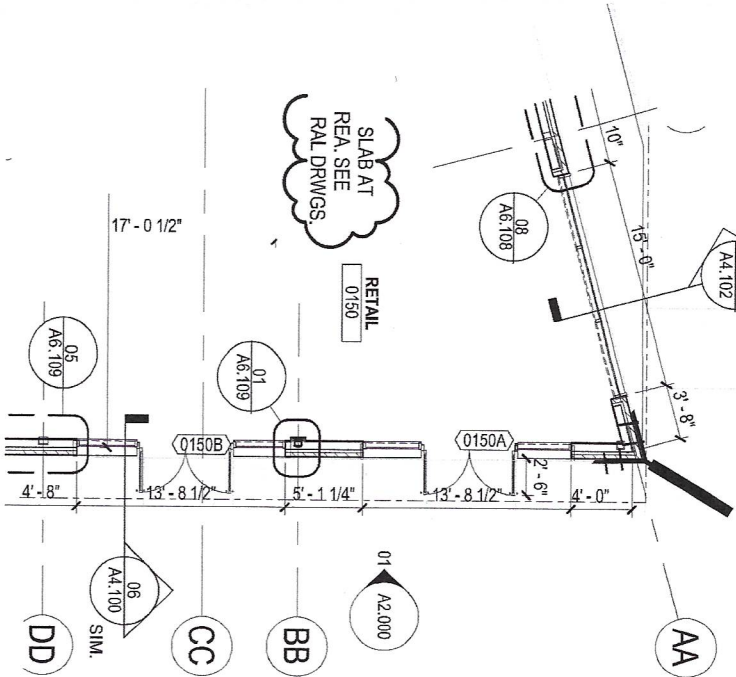


1 SITE PLAN
C-400 1" = 20'

The Brooke on Bagley
2420 Bagley
Detroit, MI

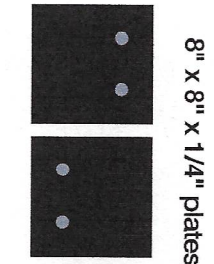
in
INTERCITY NEON
P.O. Box 3762
Centerline, MI 48015
ph: 586-754-6020
fax: 586-754-7436
www.intercityneon.com

Projecting sign mounted to corner of building



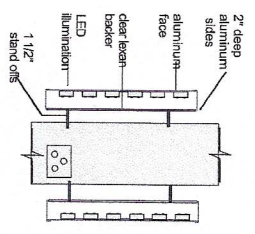
- (3) 3" square tubes from sign mounting to wall
- 1/4" thick mounting plates with Grade 5 bolts attached to wall & corner beam

Face of brick to face of steel tube is 8.75"
 1.5" metal framing
 .625" DensGlass
 .625" DensGlass
 6" air gap / Brick



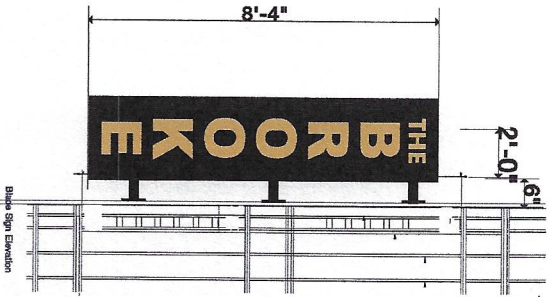
Corner beam is HSS 6 x 6 x 5/8"

Halo Channel Letters Mounted on Extrusion Blade Sign



Side Elevation - No Scale

Owner & tenant agree maximum illumination for this sign will not exceed 3500 NITS during the hours of 6am - 10pm or 10pm - 6am



Aluminum extruded sign cabinet with halo lit letters mounted to both sides

Grade 5 bolts w/ 1" washers staggered on plate 2.5" from edge of plate

The Brooke, on Bagley
 2420 Bagley
 Detroit, MI
 10-20-2023

INTERCITY NEON
 P.O. Box 3762
 Centerville, MI 48015
 ph: 586-754-6020
 fax: 586-754-7436
 www.intercityneon.com

The Brooke Sign Calculations

| | | | |
|---|--------|--------|------------|
| Sign Size | | | |
| Height | 8.33 | feet | |
| Length | 3 | feet | |
| Total Area of Sign | 25 | sqft | |
| Wind Load on Sign | 115 | mph | Exposure B |
| Wind Load converted to PSF | 35 | psf | |
| Weight of Sign | 375 | pounds | |
| Total Wind Load on Sign | 875 | pounds | |
| Wind Load is resisted by six 1/2" Grade 5 bolts | | | |
| Wind Load per Bolt | 146 | pounds | |
| Shear Strength of one 1/2" Diameter Bolt | 12100 | pounds | |
| Tensile Strength of one 1/2" Diameter Bolt | 17000 | pounds | |
| Shear Strength of 6 Grade 5 Bolts | 72600 | pounds | |
| Tensile Strength of 6 Grade 5 Bolts | 102000 | pounds | |

Both Shear and Tensile Strength of Grade 5 Bolts exceeds applied load and will support the sign

