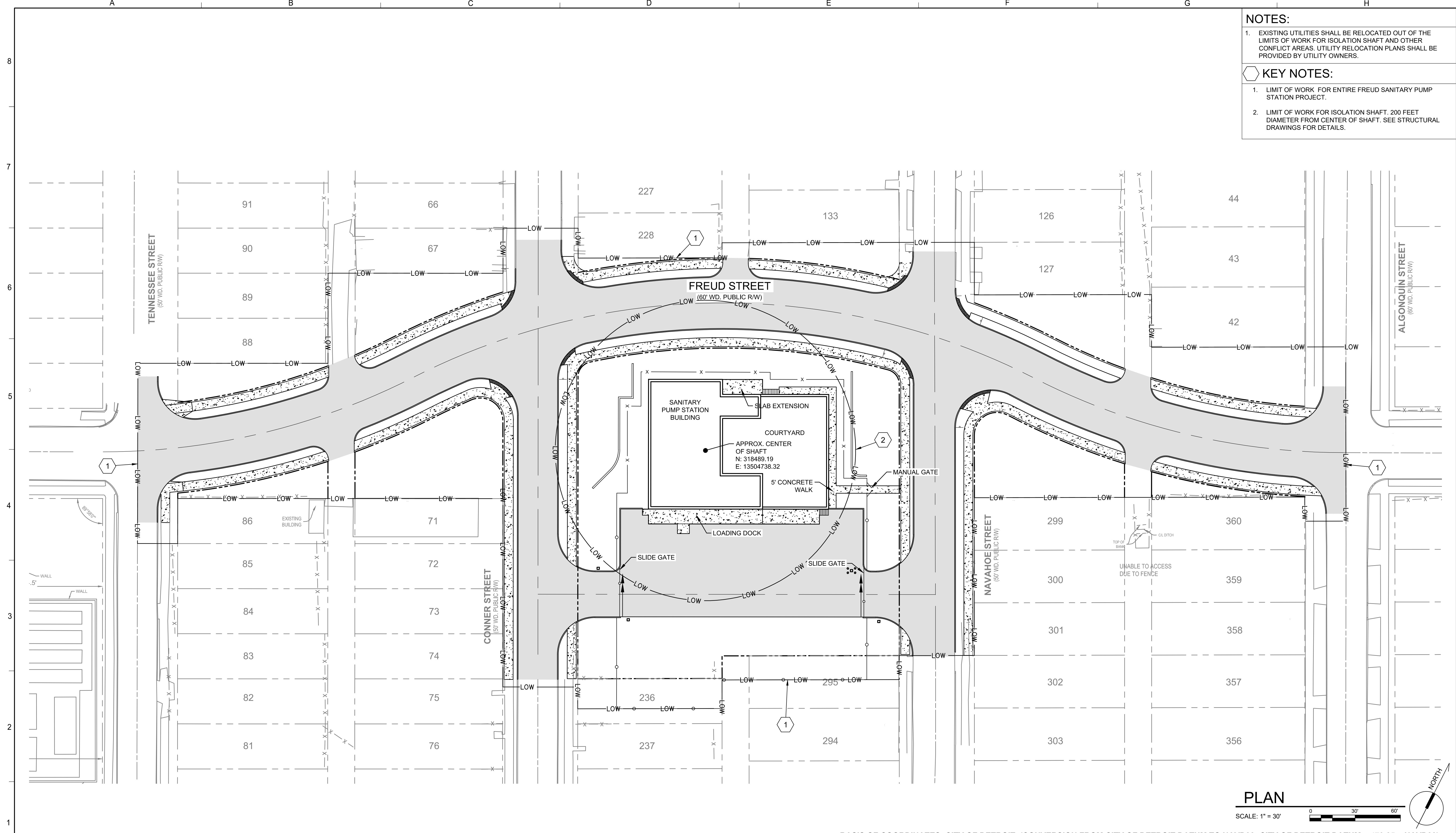


- NOTES:**
- EXISTING UTILITIES SHALL BE RELOCATED OUT OF THE LIMITS OF WORK FOR ISOLATION SHAFT AND OTHER CONFLICT AREAS. UTILITY RELOCATION PLANS SHALL BE PROVIDED BY UTILITY OWNERS.
- KEY NOTES:**
- LIMIT OF WORK FOR ENTIRE FREUD SANITARY PUMP STATION PROJECT.
  - LIMIT OF WORK FOR ISOLATION SHAFT. 200 FEET DIAMETER FROM CENTER OF SHAFT. SEE STRUCTURAL DRAWINGS FOR DETAILS.



**PLAN**  
SCALE: 1" = 30'

BASIS OF COORDINATES: CITY OF DETROIT. (CONVERSION FROM CITY OF DETROIT DATUM TO NAVD88: CITY OF DETROIT DATUM + 479.25 = NAVD88)

**FREUD PUMP STATION IMPROVEMENTS**

**OVERALL SITE PLAN**

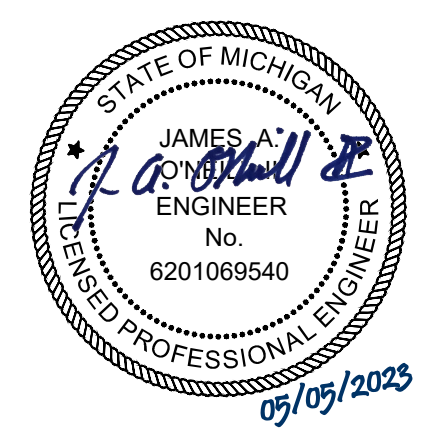


LEGAL ENTITY: ARCADIS OF MICHIGAN, LLC  
COPYRIGHT: 2021



EGLE PERMIT No. P41004061 v. 1  
GLWA CONTRACT No. 2204605  
GLWA CIP No. 232002  
DRAWING No. C-02-101

DESIGNED BY: X. ZHANG  
DRAWN BY: J. WATTS  
CHECKED BY: J. O'NEILL  
APPROVED BY: J. O'NEILL



No.	ISSUED FOR BID	05/05/2023
No.	DESCRIPTIONS/REVISIONS	DATE
0	ISSUED FOR BID	05/05/2023

SECTION MAP	TOWN	RANGE	SECTION	Q	QQ
0 6 2 D	G				

C:\Users\JWatts\Documents\Arcadis\ANA - 30047523 - Detroit MI - FPS Rehabilitation\Project Files\0\_WIP\Civil\C-02-101.dwg, 5/4/2023 2:22:07 PM, JWatts