

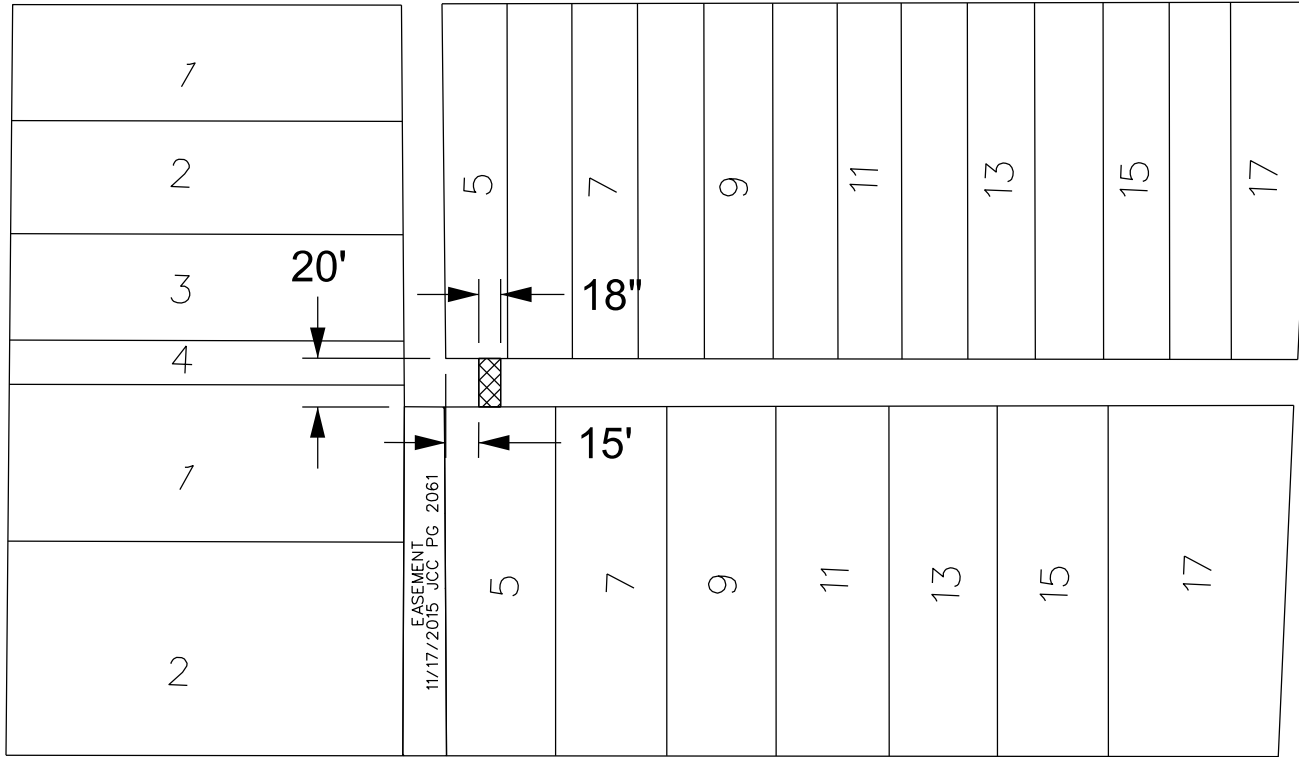
MAP-23-148



WOODWARD AVE. 120 FT. WD.

HARPER AVE. 80 FT. WD.

JOHN R. ST. 60 FT. WD.



EDSEL FORD FWY. E.S.D.

NOTE: PROPOSED 18" HDPE STORM SEWER CROSSING MAX ENCROACHMENT DEPTH 7.9 FT.



- REQUEST ENCROACHMENT

(FOR OFFICE USE ONLY)

CARTO 31F

B					
A					
	DESCRIPTION	DRWN	CHKD	APPD	DATE
	REVISIONS				
	DRAWN BY	AP	CHECKED	LC	
	DATE	12-06-2023	APPROVED	JD	

REQUEST ENCROACHMENT AREA IN THE EAST PUBLIC ALLEY, 20 FT. WD. IN THE BLOCK BOUNDED BY HARPER, JOHN R., FORD FWY. E.S.D., AND WOODWARD AVE.

CITY OF DETROIT  
CITY ENGINEERING DIVISION  
SURVEY BUREAU

JOB NO. 23-148

DRWG. NO.