

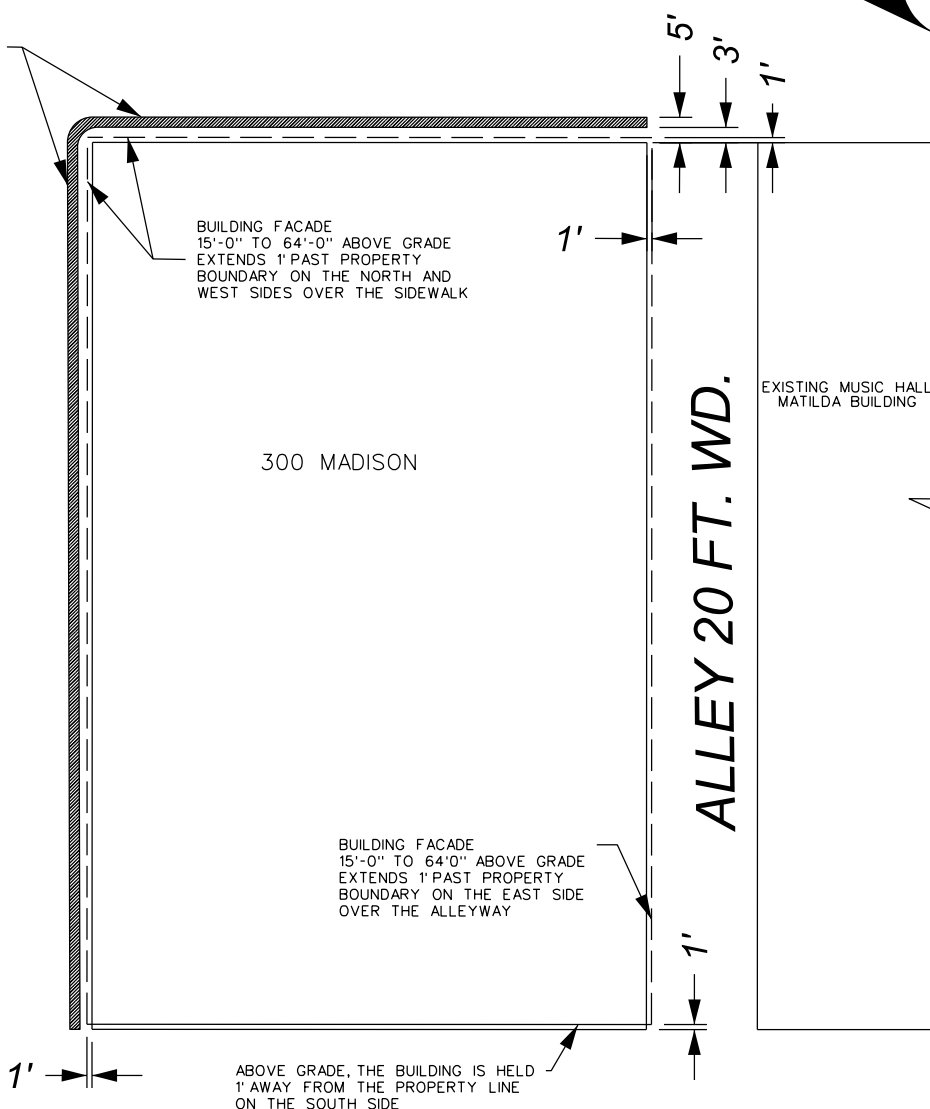
MAP-23-120

MADISON AVE. 90 FT. WD.



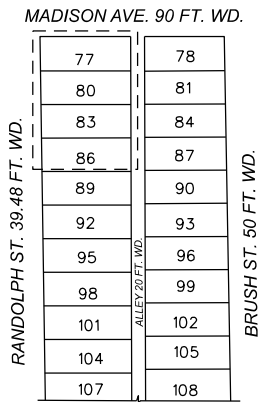
SUSPENDED SUN SCREEN
15'-6" TO 64'-0" ABOVE GRADE
EXTENDS 5' PAST PROPERTY
BOUNDARY ON THE NORTH AND
WEST SIDES OVER THE SIDEWALK

RANDOLPH ST. 39.48 FT. WD.



- SUSPENDED SUN SCREEN 15'-6" TO 64'-0" ABOVE GRADE EXTENDS 5' PAST PROPERTY BOUNDARY ON THE NORTH AND WEST SIDES OVER THE SIDEWALK

- BUILDING FACADE 15'-0" TO 64'-0" ABOVE GRADE EXTENDS 1' PAST PROPERTY BOUNDARY ON THE WEST, NORTH, AND EAST SIDES



(FOR OFFICE USE ONLY)

GRATIOT AVE. 120 FT. WD.

CARTO 28 A

B					
A					
DESCRIPTION	DRWN	CHKD	APPD	DATE	
REVISIONS					
DRAWN BY	LC	CHECKED	AP		
DATE	10-23-2023	APPROVED	JD		

REQUEST ABOVE GRADE
ENCROACHMENTS AROUND
THE PROPOSED
MUSIC HALL EXPANSION
AT 300 MADISON AVE.

CITY OF DETROIT CITY ENGINEERING DIVISION SURVEY BUREAU	
JOB NO.	23-120
DRWG. NO.	23-120_2