

- GENERAL NOTES:**
- REFER TO 100% SD APPENDIX I FOR ARCHITECTURAL, S MEP-FP-IT, AND CIVIL DRAWINGS.
  - REFER TO 100% SD APPENDIX II FOR PLAN AND WALL FINISH DESCRIPTIONS.
  - REFER TO 100% SD APPENDIX III FOR ADDITIONAL FINISH DESCRIPTIONS.
  - REFER TO 100% SD APPENDIX IV FOR PERFORMANCE SPECIFICATIONS AND ALTERNATES.
  - REFER TO 100% SD APPENDIX V FOR CODE SUMMARY.
  - ALL EXISTING UTILITIES AND SITE CONDITIONS, INCLUDING BUT NOT LIMITED TO NEIGHBORING STRUCTURES, MUST BE VERIFIED IN FIELD PRIOR TO CONSTRUCTION.
  - ALL PROPOSED SCOPE ADJACENT TO (OR ENCRoACHING UPON) EXISTING EASEMENTS REQUIRE APPROVAL FROM RELEVANT GOVERNING BODIES.
  - SEAMANT WALL DESIGN SCOPE IS FOR REFERENCE ONLY AND MUST BE DIMENSIONALLY CONFIRMED AND FURTHER DEVELOPED BY ERS SUBCONTRACTOR.

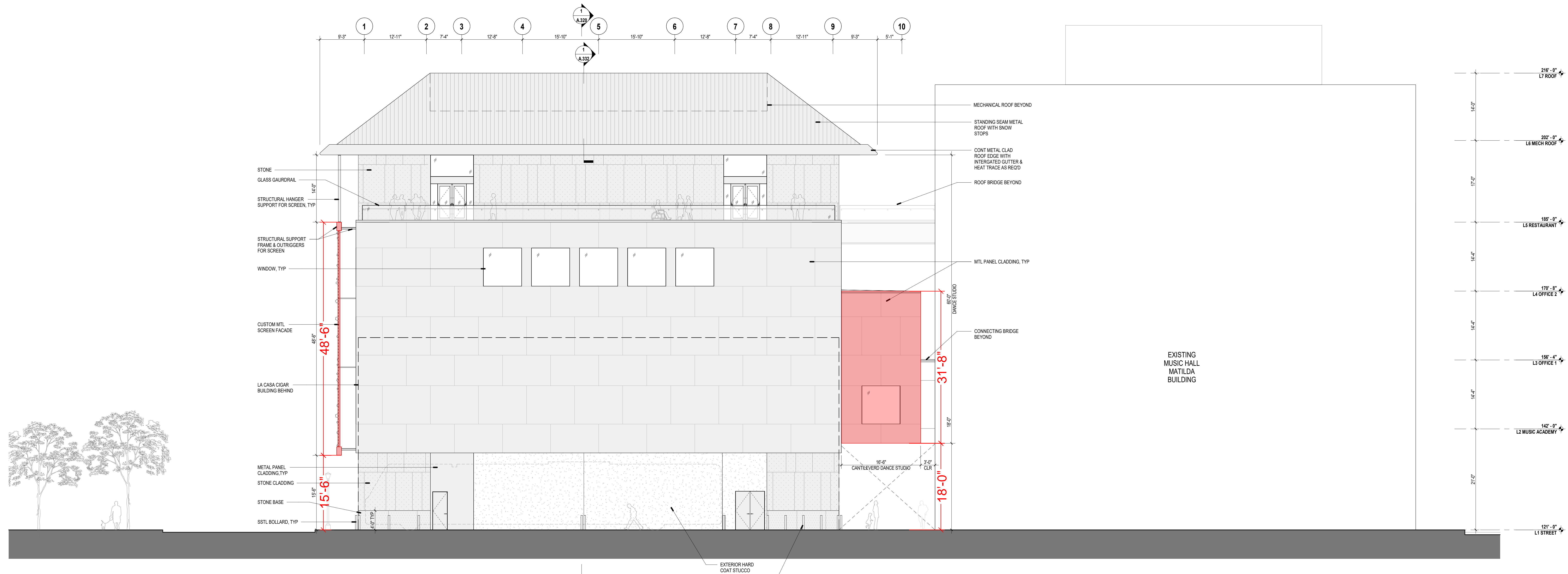
**MATERIAL DESIGNATIONS: ELEVATION**

[Symbol]	CUSTOM METAL SCREEN
[Symbol]	GLAZING
[Symbol]	METAL
[Symbol]	STANDING SEAM ROOF
[Symbol]	STONE
[Symbol]	THIN GLAZED BRICK

TOD WILLIAMS  
BILLIE TRISSEN  
ARCHITECTS, LLP  
220 CLEVELAND PARKWAY SOUTH  
NEW YORK, NY 10019  
T 212.562.2885  
F 212.562.2886  
E info@twi.com



**2 BUILDING ELEVATION - EAST**  
SCALE: 1/8" = 1'-0"



**1 BUILDING ELEVATION - SOUTH**  
SCALE: 1/8" = 1'-0"

100% SCHEMATIC DESIGN  
SEPTEMBER 08, 2023  
REVISIONS

NOT FOR CONSTRUCTION

**DETROIT MUSIC HALL EXPANSION  
CENTER FOR THE PERFORMING ARTS**  
350 JACKSON ST. DETROIT, MI 48226

DWNN BY: TWBTA  
SCALE: As Indicated

EXTERIOR  
ELEVATIONS -  
SOUTH & EAST

**A.302**