

SURVEY

OF LOTS 12 AND 13 AND THE SOUTH 76 FEET OF THE EAST 40 FEET OF LOT 14, OF THE "SUBDIVISION OF PART OF THE CASS FARM, (BLOCKS 89 TO 119, INCL.)", (L. 1, PLATS, P. 175, 176 & 177, W.C.R.), CITY OF DETROIT, WAYNE COUNTY, MICHIGAN.

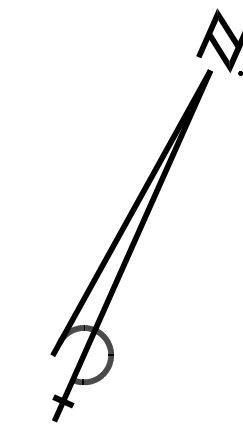
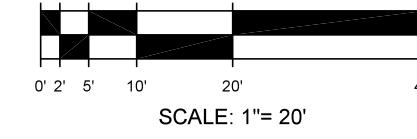
JULY 11, 2019

REVISED NOVEMBER 24, 2020
TO SHOW ONE FOOT CONTOURS

REVISED MAY 15, 2023
TO SHOW WATER AND SEWER LINES

SURVEY NO. 20340-REVISED-1

FOR: SIMPLY WELL COMMUNITIES LLC
c/o MR. LAWRENCE WILLIAMSON

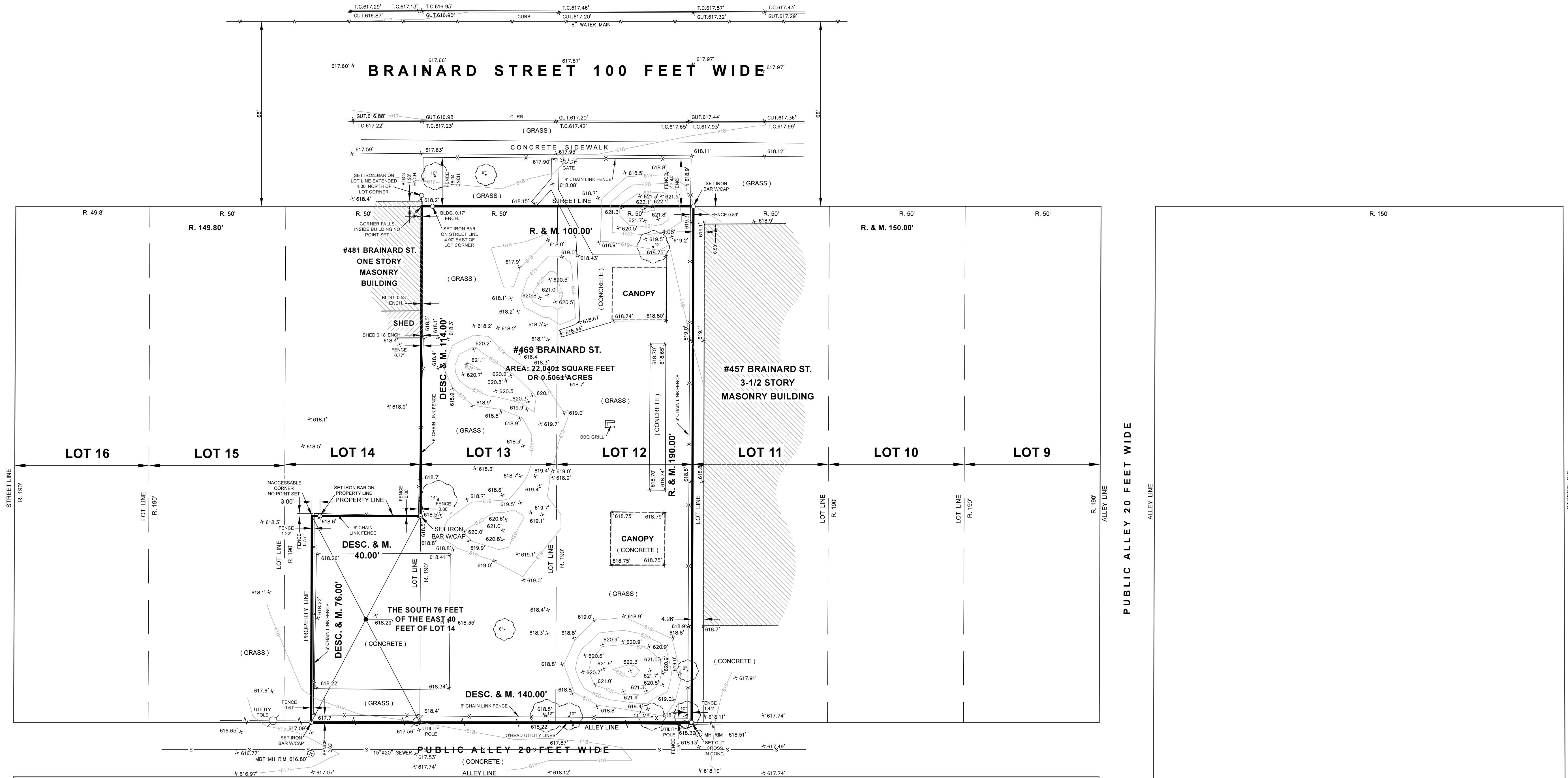


- PROPERTY DESCRIPTION -

LOTS 12 AND 13 AND THE SOUTH 76 FEET OF THE EAST 40 FEET OF LOT 14, OF THE "SUBDIVISION OF PART OF THE CASS FARM, (BLOCKS 89 TO 119, INCL.)", CITY OF DETROIT, WAYNE COUNTY, MICHIGAN, AS RECORDED IN LIBER 1 OF PLATS, ON PAGES 175, 176 AND 177, WAYNE COUNTY RECORDS.

SECOND AVENUE 100 FEET WIDE

CASS AVENUE 80 FEET WIDE



- SURVEY NOTES -

A TITLE REPORT HAS NOT BEEN PROVIDED AS PART OF THIS SURVEY. EASEMENTS AND OTHER ENCUMBRANCES CONTAINED THEREIN, IF ANY, HAVE NOT BEEN SHOWN.

ELEVATIONS SHOWN HEREON ARE ON NAVD88 DATUM.

THE LOCATION OF ALL UTILITY MANHOLES SHOWN HEREON ARE FROM FIELD MEASUREMENTS. WE HAVE SHOWN UNDERGROUND UTILITY LINES FROM MUNICIPAL AND PUBLIC UTILITY COMPANY RECORDS. WE ASSUME NO RESPONSIBILITY AS TO THE SIZE OR LOCATION OF UNDERGROUND UTILITIES.

- SURVEY LEGEND -

ENCH. means Encroachment
DESC. means Described
M. means Measured
R. means Recorded

0.08 ft. = 1" 0.58 ft. = 7"
0.17 ft. = 2" 0.67 ft. = 8"
0.25 ft. = 3" 0.75 ft. = 9"
0.33 ft. = 4" 0.83 ft. = 10"
0.42 ft. = 5" 0.92 ft. = 11"
0.50 ft. = 6" 1.00 ft. = 12"



DAVID C. ADAMS & SON
PROFESSIONAL LAND SURVEYORS, INC.
IF THE SURVEYOR'S SIGNATURE IS NOT IN A CONTRASTING COLOR, THE PLAN IS A COPY THAT SHOULD BE ASSUMED TO CONTAIN UNAUTHORIZED ALTERATIONS.

by: *Paul J. Krietsch*
PAUL J. KRIETSCH
PROFESSIONAL LAND SURVEYOR NO. 30086

ADAMS & SON
PROFESSIONAL LAND SURVEYORS, INC.
25517 Five Mile Road
Detroit, Michigan 48239
Tel: 313-538-1223
Fax: 313-538-8438
www.DCASurveys.com