



CITY OF DETROIT
DEPARTMENT OF PUBLIC WORKS
CITY ENGINEERING DIVISION

COLEMAN A. YOUNG MUNICIPAL CENTER
2 WOODWARD AVE. SUITE 601
DETROIT, MICHIGAN 48226
PHONE: (313) 224-3949 TTY: 711
WWW.DETROITMI.GOV

To: Clerk's Office
From: The Department of Public Works
City Engineering Division
MapsandRecordsBureau@DetroitMI.Gov
(313) 224-3970

Petitioner:
Innovative Acquisitions, LLC
630 Woodward Avenue
Detroit, MI, 48226

On behalf of the above-mentioned petitioner the Department of Public Works: City Engineering Division is submitting a petition request for the action below. The petitioner has received a project consultation from the Department of Public Works: City Engineering Division and has been advised the following:

Type of action recommended:

Petition for encroachment within Grand River Avenue and Washington Blvd, at the northeast corner of the property commonly known as 1249 Washington Blvd, for the purpose of installing an on-site advertising sign.

Jered Dean
Manager II
Department of Public Works
City Engineering Division
313-224-3985



METRO SIGNS
— & LIGHTING —

11444 Kaltz Ave. Warren, MI 48089

P: (586)759-2700 F: (586)759-2703

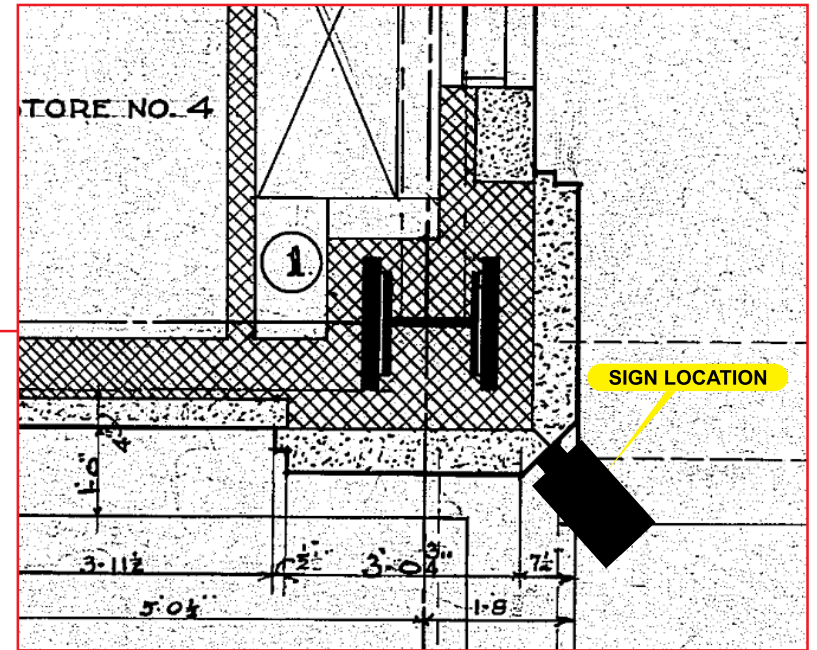
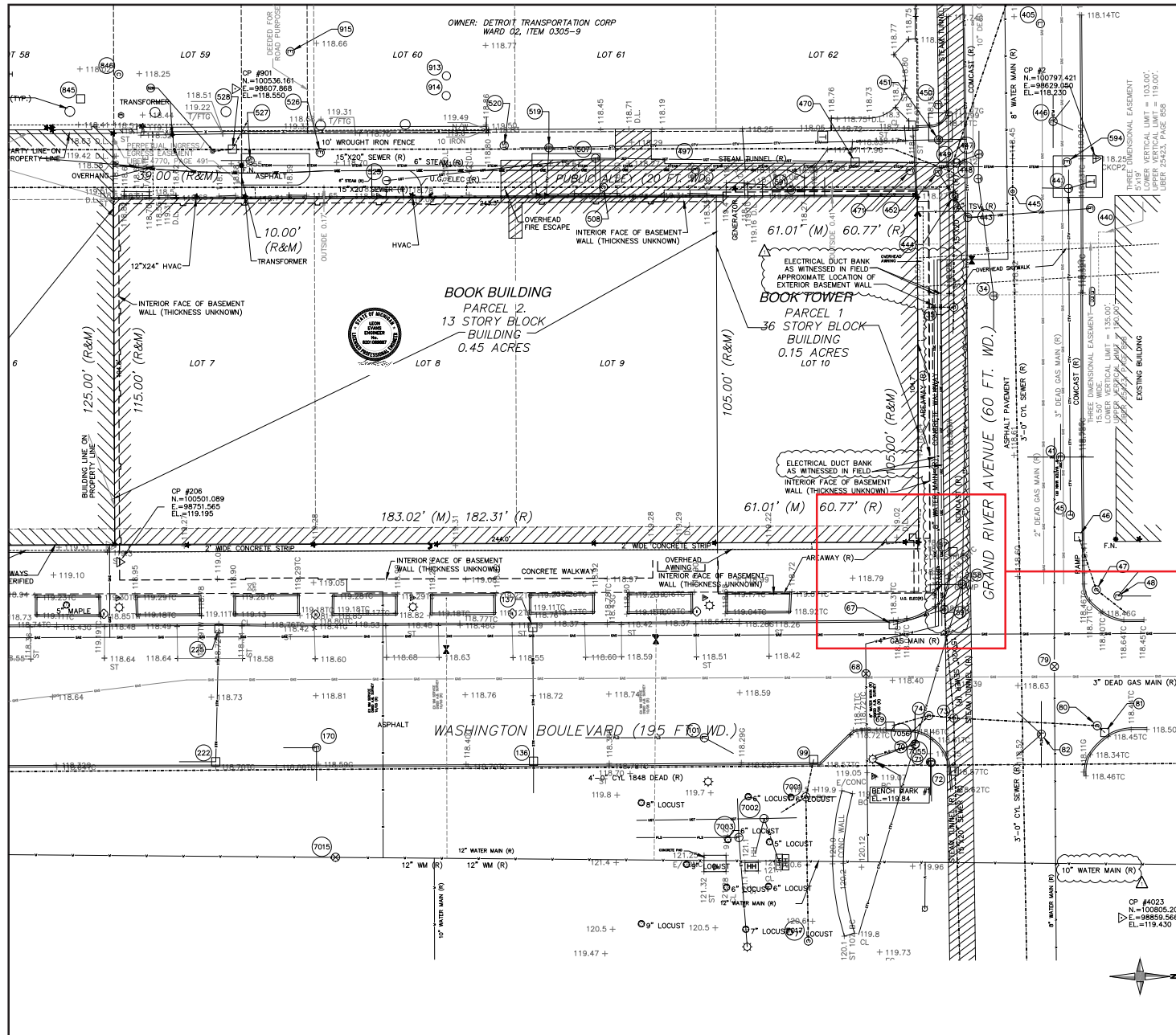
kdeters@metrodetroitsigns.com

DATE: 10/9/23
TO: City of Detroit
FROM: Kevin Deters
Metro Detroit Signs
RE: Le Supreme at 1265 Washington Blvd

We are applying for a projecting sign at Le Supreme. We have a certificate of appropriateness from HDC. The sign is 12 sq feet, 9 feet above grade, and it projects 22 inches from the building. We are installing the sign on behalf of the owner Innovative Acquisitions, LLC.

Feel free to call me at (586)759-2700 if anything else is needed. Thank you for your assistance.

Kevin Deters 10-9-23



Le Supreme

Sales Person: Joe Stelzer

Drawn By: Connie Fotiu

Date: 6/21/2023

File Name: Le Supreme 230773.cdr
Site Details Design01 Pg 4

Design01
Revision:

Project Number:

230773

This drawing and design/layout is the property of Metro Detroit Signs. The use of which in part or in whole is not permitted without prior written consent from Metro Detroit Signs. All rights reserved. Copyright 2018
Customer Signature _____

Date _____



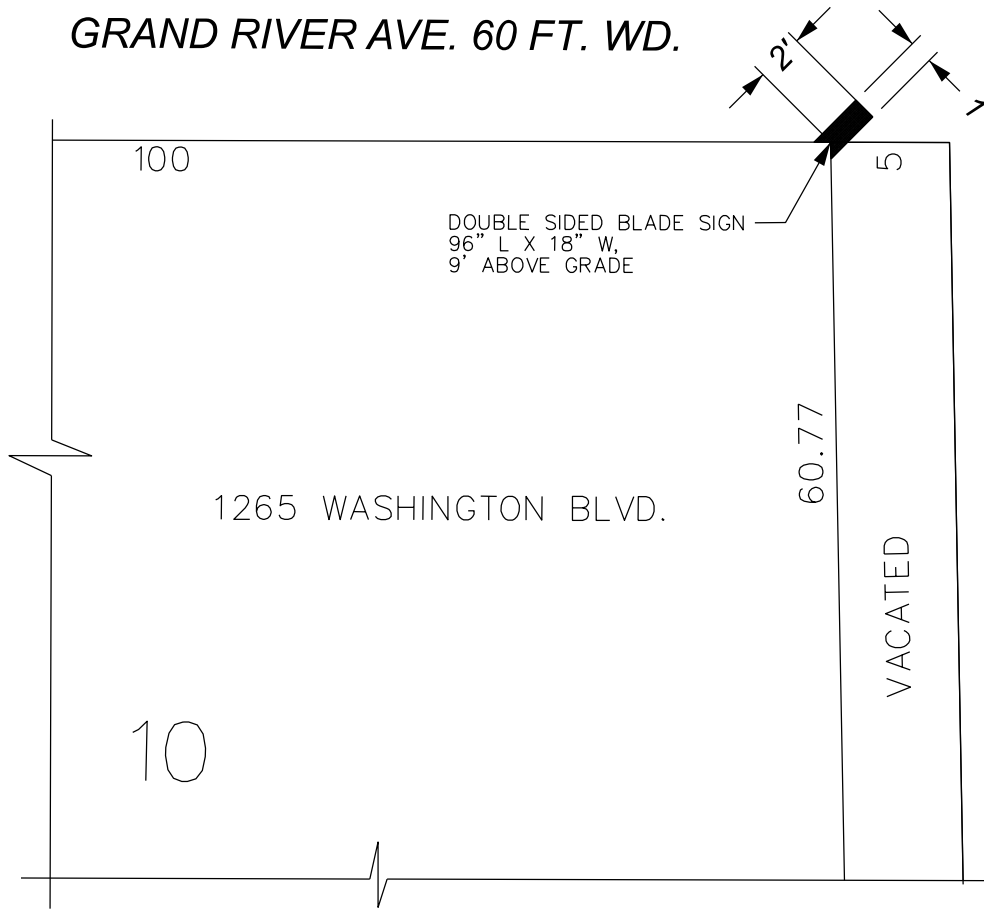
METRO DETROIT OFFICE:
11444 Kaltz Ave
Warren, MI 48092
Phone: 586-759-2700

WWW.METROSAL.COM





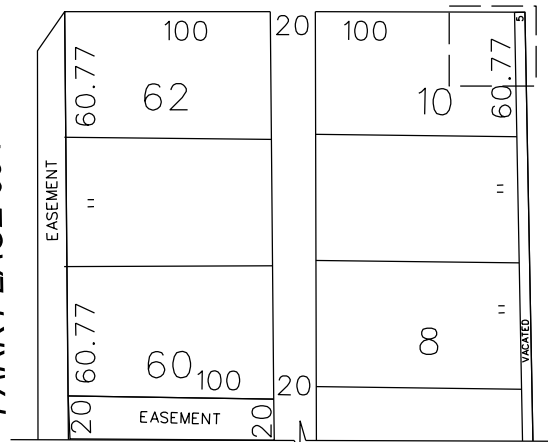
GRAND RIVER AVE. 60 FT. WD.



WASHINGTON BLVD. 195 FT. WD.

GRAND RIVER AVE. 60 FT. WD.

PARK PLACE 60 FT. WD.



WASHINGTON BLVD. 195 FT. WD.

STATE ST. 60 FT. WD.

 - REQUEST ENCROACHMENT
(For Overhead Sign)

(FOR OFFICE USE ONLY)

CARTO 28 B

B					
A					
DESCRIPTION	DRWN	CHKD	APPD	DATE	
REVISIONS					
DRAWN BY	LC	CHECKED	AP		
DATE	10-11-2023	APPROVED	JD		

**REQUEST ENCROACHMENT
INTO WASHINGTON BLVD. AND
GRAND RIVER AVE. AT
1265 WASHINGTON BLVD.**

CITY OF DETROIT	
CITY ENGINEERING DIVISION	
SURVEY BUREAU	
JOB NO.	23-146
DRWG. NO.	