



CITY OF DETROIT  
DEPARTMENT OF PUBLIC WORKS  
CITY ENGINEERING DIVISION

COLEMAN A. YOUNG MUNICIPAL CENTER  
2 WOODWARD AVE. SUITE 601  
DETROIT, MICHIGAN 48226  
PHONE: (313) 224-3949 TTY: 711  
WWW.DETROITMI.GOV

---

To: Clerk's Office  
From: The Department of Public Works  
City Engineering Division  
MapsandRecordsBureau@DetroitMI.Gov  
(313) 224-3970

Petitioner:  
Possibility 4, LLC  
P. O. Box 15096  
Detroit, MI, 48215

On behalf of the above-mentioned petitioner the Department of Public Works: City Engineering Division is submitting a petition request for the action below. The petitioner has received a project consultation from the Department of Public Works: City Engineering Division and has been advised the following:

Type of action recommended:

Petition for encroachment within Van Dyke Street, adjacent to the property commonly known as 7960 Kercheval Street, for the purpose of installing a canopy.

Jered Dean  
Manager II  
Department of Public Works  
City Engineering Division  
313-224-3985

July 25, 2023

To Whom It May Concern:

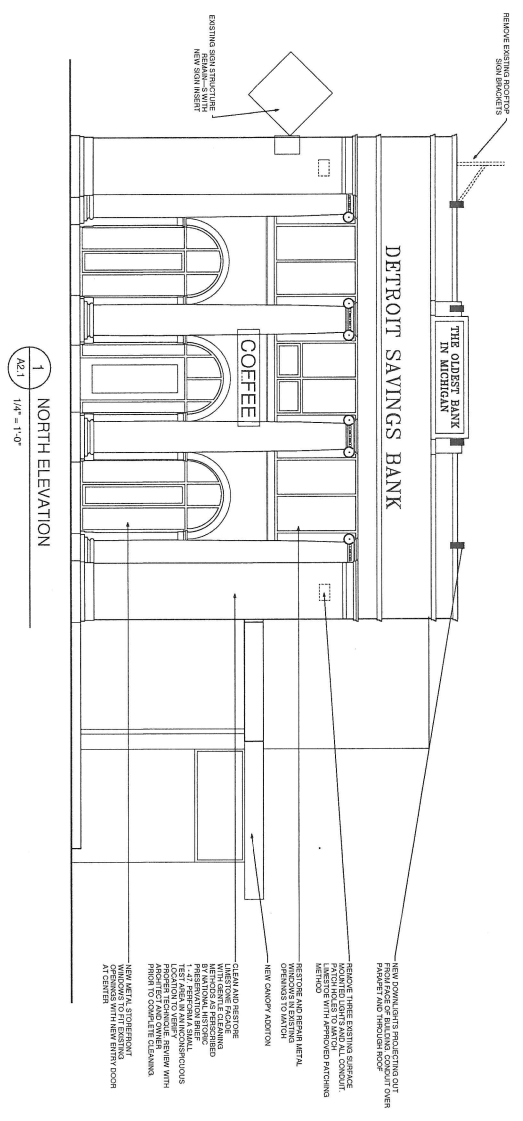
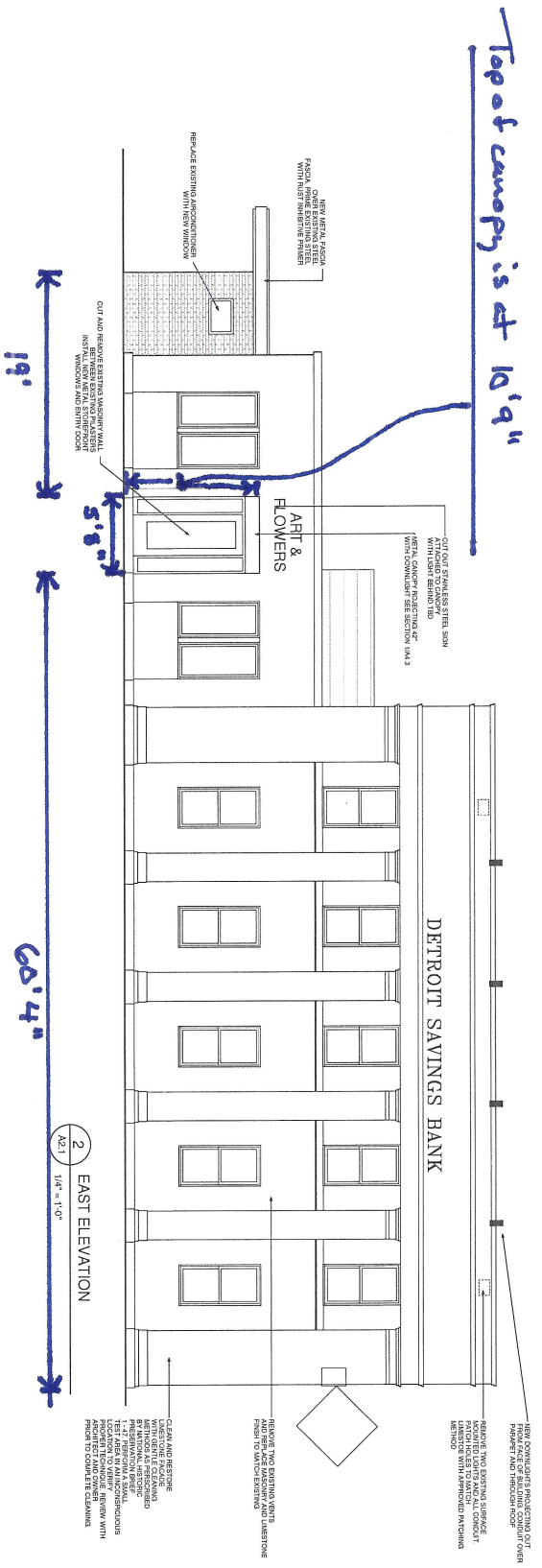
We are asking to allow for the encroachment over a city sidewalk at 7968 Kercheval. The encroachment is located on the east side of the building and is for a small canopy over a door. The canopy is ten feet, nine inches above the sidewalk and is five feet, eight inches wide. The canopy is four inches thick. The canopy will project out two feet 5 inches above the sidewalk. There are currently no overhead utilities on that side of the street.

Thank you for your consideration in this matter,

Jason B. Senior  
Banyan Investments LLC on behalf of Possibility 4 LLC  
734-368-4022



THIS DRAWING IS TO BE USED IN CONNECTION WITH THE BUILDING PERMITS AND THE CITY OF DETROIT'S ZONING ORDINANCES. THE CITY OF DETROIT'S ZONING ORDINANCES ARE AVAILABLE AT: [www.detroitmi.gov/zoning](http://www.detroitmi.gov/zoning). THE CITY OF DETROIT'S ZONING ORDINANCES ARE SUBJECT TO CHANGE WITHOUT NOTICE.



7968

7980 KERCHVAL  
DETROIT, MI  
BANYAN  
INVESTMENTS LLC

**FX**  
Architecture  
LLC  
1501 W. Wacker  
Chicago, IL 60601  
www.fxarchitect.com

NOT FOR CONSTRUCTION

Date & Revision  
11.14.2014

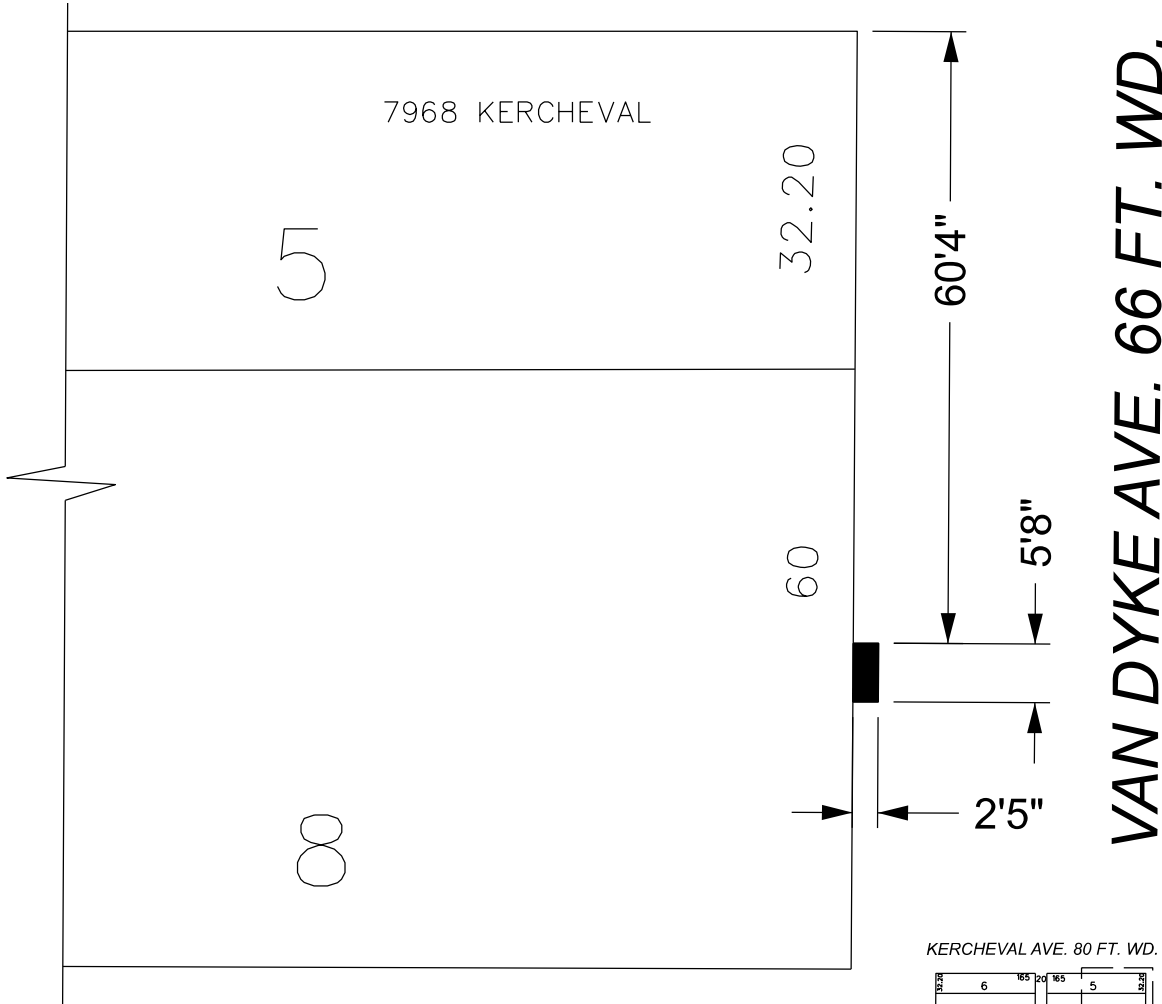
Drawn By: FXA  
Checked By: FXA

Sheet  
A2.1



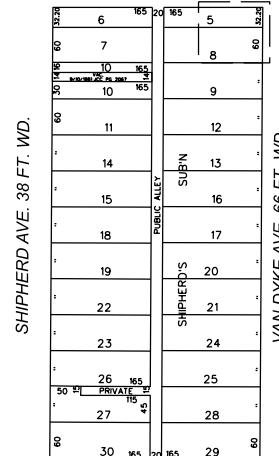
# KERCHEVAL AVE. 80 FT. WD.

PUBLIC ALLEY 20 FT. WD.



VAN DYKE AVE. 66 FT. WD.

KERCHEVAL AVE. 80 FT. WD.



ST. PAUL ST. 60 FT. WD.

CANOPY: 5'8" WIDE, 4" THICK, PROJECTING 2'5" OVER THE SIDEWALK, 10'9" ABOVE GRADE



- REQUEST ENCROACHMENT

(FOR OFFICE USE ONLY)

CARTO 47 E

B					
A					
DESCRIPTION	DRWN	CHKD	APPD	DATE	
REVISIONS					
DRAWN BY	LC	CHECKED	AP		
DATE	07-31-2023	APPROVED	JD		

**REQUEST ENCROACHMENT  
FOR CANOPY OVER  
VAN DYKE AVE. 66 FT. WD.  
ON THE BUILDING LOCATED  
AT 7968 KERCHEVAL**

**CITY OF DETROIT  
CITY ENGINEERING DIVISION  
SURVEY BUREAU**

JOB NO. 23-96

DRWG. NO.