

# City of Detroit

Janice M. Winfrey  
City Clerk

OFFICE OF THE CITY CLERK

Andre P. Gilbert II  
Deputy City Clerk

## DEPARTMENT PETITION REFERENCE COMMUNICATION

*To: The Department or Commission Listed Below*

*From: Janice M Winfrey, Detroit City Clerk*

---

The following petition is herewith referred to you for report and recommendation to the City Council.

In accordance with that body's directive, kindly return the same with your report in duplicate within four (4) weeks.

---

Petition No.	2024-012
Name of Petitioner	1145 Griswold LLC
Description of Petition	Petition to renew encroachments of below grade areaways within the right of way located on the west side of Griswold Street and south side of State Street running adjacent to the parcels commonly known as 1133-1145 Griswold Street.
Type of Petition	<b>Alley Vacation/Encroachment/Utility Vacation</b>
Submission Date	01/04/2024
Concerned Departments	Department of Public Works, Planning and Development Department, City Engineering Division
Petitioner Contact	Giffels Webster 28 W. Adams, Suite 1200 Detroit, MI 48226 313-962-4442 <a href="mailto:mmarks@giffelswebster.com">mmarks@giffelswebster.com</a>



**CITY OF DETROIT  
DEPARTMENT OF PUBLIC WORKS  
CITY ENGINEERING DIVISION**

**COLEMAN A. YOUNG MUNICIPAL CENTER  
2 WOODWARD AVE. SUITE 601  
DETROIT, MICHIGAN 48226  
PHONE: (313) 224-3949 TTY: 711  
WWW.DETROITMI.GOV**

---

To: Clerk's Office  
From: The Department of Public Works  
City Engineering Division  
MapsandRecordsBureau@DetroitMI.Gov  
(313) 224-3970

Petitioner:  
1145 Griswold, LLC  
401 S. Washington Square  
Lansing, MI, 48933

On behalf of the above-mentioned petitioner the Department of Public Works: City Engineering Division is submitting a petition request for the below mentioned action. The petitioner has received a project consultation from the Department of Public Works: City Engineering Division and has been advised the following:

Type of action recommended:

Petition to renew encroachments of below grade areaways within the right of way located on the west side of Griswold Street and south side of State Street running adjacent to the parcels commonly known as 1133-1145 Griswold Street.

Jered Dean  
Manager II  
Department of Public Works  
City Engineering Division  
313-224-3985



April 10, 2023

**Honorable Detroit City Council  
C/o Detroit City Clerk  
200 Coleman A. Young Municipal Center  
2 Woodward Avenue  
Detroit, Michigan 48226**

RE: Giffels Webster - Petition requesting encroachments of public rights-of-way.

Giffels Webster, 28 W. Adams, Suite 1200, Detroit, Michigan 48226 on behalf of 1145 Griswold Street LLC, 401 S Washington sq. Suite 102, Lansing, Michigan, respectfully requests the following encroachments into the public rights-of-way in the block bounded by Griswold Street, Michigan Avenue, State Street, Washington Boulevard:

- Proposed below ground encroachment for an existing vault extending into Griswold Street and State Street right-of-way. See the referenced Exhibit for details.

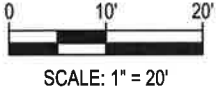
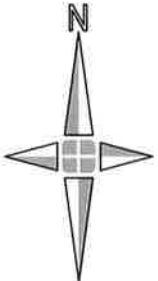
Limits of the requested encroachments can be found in the attachment, enclosed herein.

If you should have any questions, please do not hesitate to contact me at (P) 313.962.4442 (M) 508.654.7845 or at [levans@giffelswebster.com](mailto:levans@giffelswebster.com).

Respectfully,

A handwritten signature in black ink, appearing to read "Leon Evans".

Leon Evans P.E.,  
Project Manager  
Giffels Webster



STATE STREET (60' WIDE)

GRISWOLD STREET (60' WIDE)

1145 GRISWOLD

1133 GRISWOLD

**LEGEND**



PROPOSED BELOW GROUND ENCROACHMENT FOR VAULT.

1145 GRISWOLD

CITY OF DETROIT, WAYNE COUNTY MICHIGAN

ENCROACHMENT



28 West Adams Road  
Suite 1200  
Detroit, MI 48226  
p (313) 962-4442  
f (313) 962-5068  
www.giffelswebster.com

Executive: MM  
Manager: LE  
Designer: FG  
Quality Control: AGN

Developed For:

1145 GRISWOLD STREET LLC  
401 S WASHINGTON SQ. SUITE 102  
LANSING, MICHIGAN

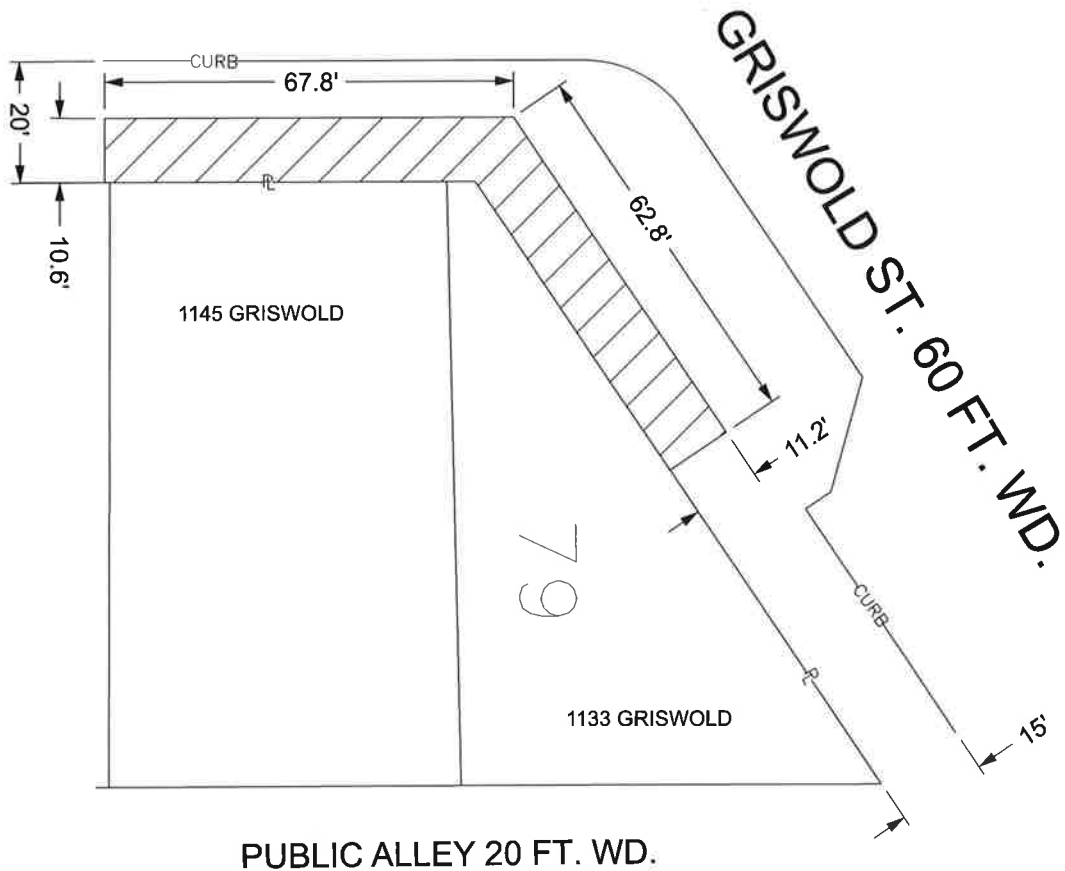
DATE:	ISSUE:

Date: 03.31.2023  
Scale: 1"=20'  
Sheet: 1 OF 1  
Project: 18302.00D

Copyright © 2023 Giffels Webster.  
No reproduction shall be made  
without the prior written consent of  
Giffels Webster.



STATE ST. 60 FT. WD.



PUBLIC ALLEY 20 FT. WD.



- REQUEST BELOW GRADE ENCROACHMENT  
(For Below Ground Vault)



(FOR OFFICE USE ONLY)

CARTO 28 B

REQUEST ENCROACHMENT  
INTO GRISWOLD ST.  
AND STATE ST.  
AT 1145 GRISWOLD

CITY OF DETROIT  
CITY ENGINEERING DIVISION  
SURVEY BUREAU

JOB NO. 23-52

DRWG. NO.

B					
A					
DESCRIPTION	DRWN	CHKD	APPD	DATE	
REVISIONS					
DRAWN BY	LC	CHECKED	JD		
DATE	08-14-2023	APPROVED	JD		