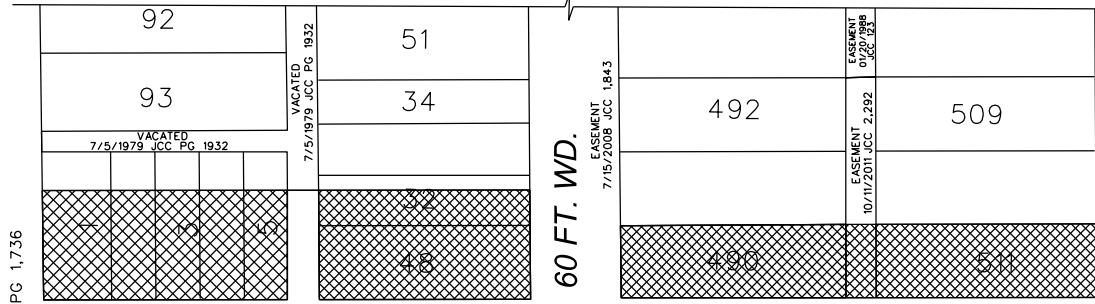


MAP-23-167

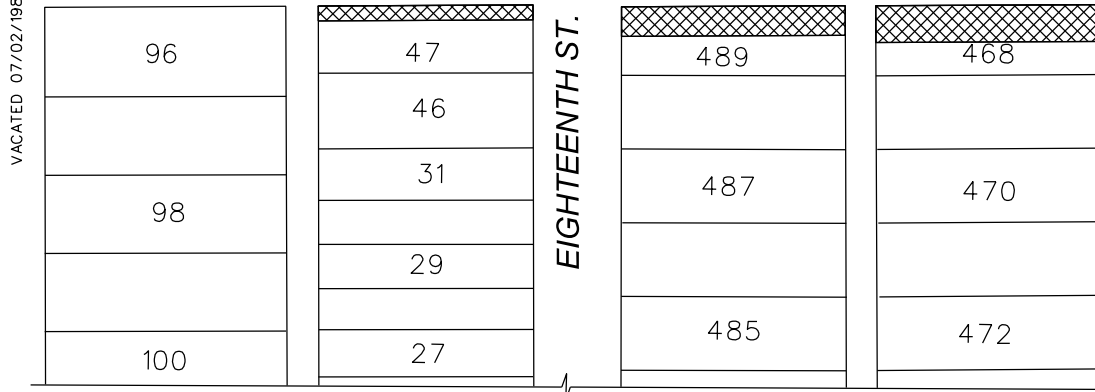
MAGNOLIA ST. 50 FT. WD.



HUMBOLDT AVE. 60 FT. WD.

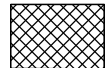


MARTIN LUTHER KING JR. BLVD. (MYRTLE) 50 FT. WD.



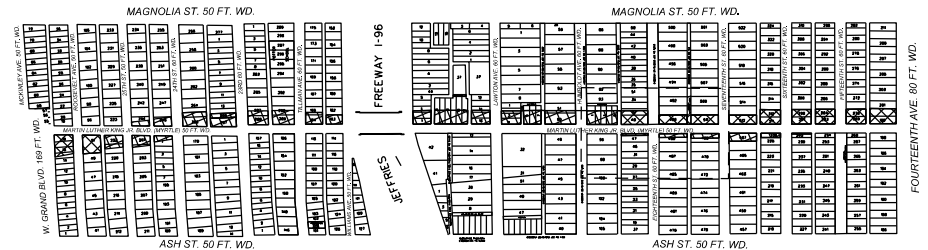
ASH ST. 50 FT. WD.

SEVENTEENTH ST. 60 FT. WD.



- REQUEST DEDICATION OF LAND FOR THE WIDENING OF PUBLIC STREET

(FOR OFFICE USE ONLY)



CARTO 19 A, B, & C

B					
A					
DESCRIPTION	DRWN	CHKD	APPD	DATE	
REVISIONS					
DRAWN BY	LC	CHECKED	AP		
DATE	01/18/2024	APPROVED	JD		

REQUEST DEDICATION OF LAND FOR THE WIDENING OF
MARTIN LUTHER KING BLVD.
BETWEEN 14TH STREET AND WEST GRAND BLVD.

CITY OF DETROIT CITY ENGINEERING DIVISION SURVEY BUREAU	
JOB NO.	23-167
DRWG. NO.	23-167_2 OF 5