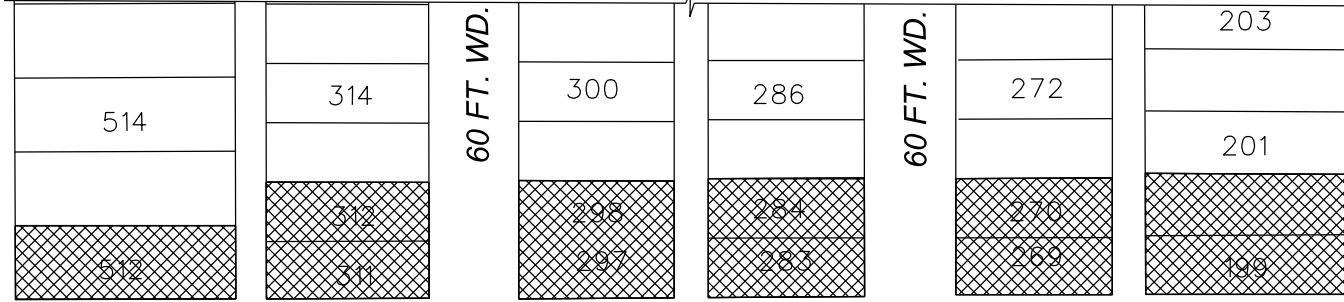


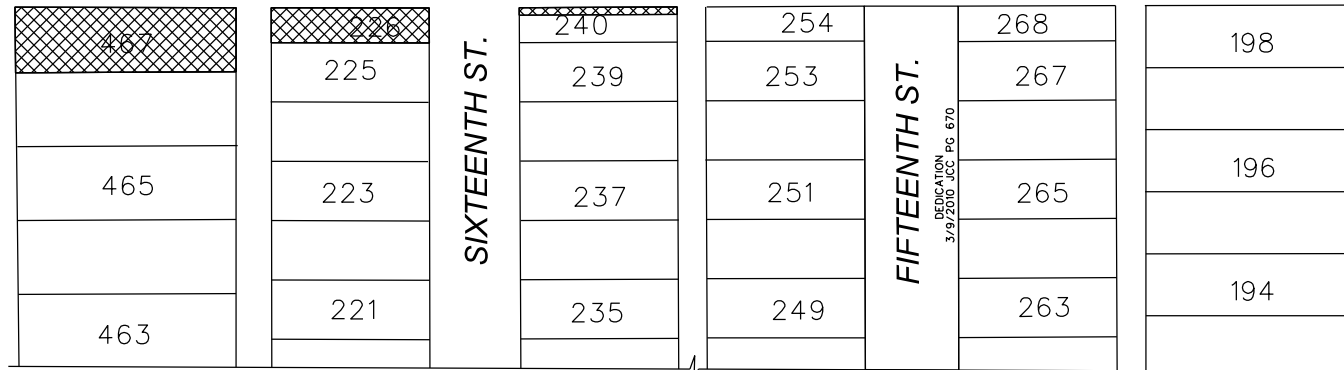
MAGNOLIA ST. 50 FT. WD.



SEVENTEENTH ST. 60 FT. WD.

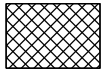
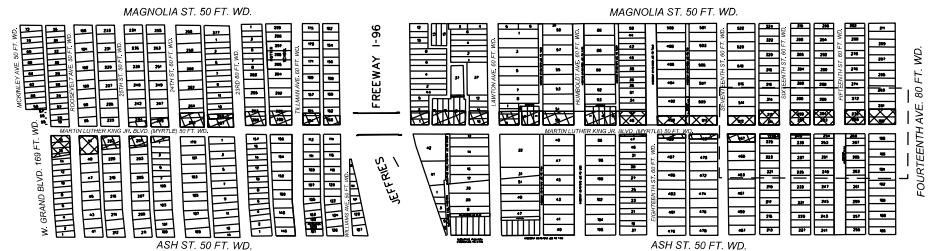


MARTIN LUTHER KING JR. BLVD. (MYRTLE) 50 FT. WD.



ASH ST. 50 FT. WD.

FOURTEENTH AVE. 80 FT. WD.



- REQUEST DEDICATION OF LAND FOR THE WIDENING OF PUBLIC STREET

(FOR OFFICE USE ONLY)

CARTO 19 A, B, & C

REQUEST DEDICATION OF LAND FOR THE WIDENING OF
MARTIN LUTHER KING BLVD.
BETWEEN 14TH STREET AND WEST GRAND BLVD.

CITY OF DETROIT
CITY ENGINEERING DIVISION
SURVEY BUREAU

JOB NO. 23-167
DRWG. NO. 23-167_1 OF 5

B					
A					
DESCRIPTION	DRWN	CHKD	APPD	DATE	
REVISIONS					
DRAWN BY	LC	CHECKED	AP		
DATE	01/18/2024	APPROVED	JD		