

Janice M. Winfrey
City Clerk

City of Detroit
OFFICE OF THE CITY CLERK

Andre P. Gilbert II
Deputy City Clerk

DEPARTMENT PETITION REFERENCE COMMUNICATION

To: The Department or Commission Listed Below

From: Janice M Winfrey, Detroit City Clerk

The following petition is herewith referred to you for report and recommendation to the City Council.

In accordance with that body's directive, kindly return the same with your report in duplicate within four (4) weeks.

Petition No.	2024-010
Name of Petitioner	City of Detroit Public Works Department
Description of Petition	Petition to dedicate land for the widening of MLK Blvd between 14 th street and West Grand Blvd.
Type of Petition	Alley Vacation/Encroachment/Utility Vacation
Submission Date	01/04/2024
Concerned Departments	Department of Public Works, Planning and Development Department, City Engineering Division
Petitioner Contact	Jered Dean Manager II Department of Public Works City Engineering Division 313-224-3985



**CITY OF DETROIT
DEPARTMENT OF PUBLIC WORKS
CITY ENGINEERING DIVISION**

**COLEMAN A. YOUNG MUNICIPAL CENTER
2 WOODWARD AVE. SUITE 601
DETROIT, MICHIGAN 48226
PHONE: (313) 224-3949 TTY: 711
WWW.DETROITMI.GOV**

To: Clerk's Office
From: The Department of Public Works
City Engineering Division
MapsandRecordsBureau@DetroitMI.Gov
(313) 224-3970

Petitioner:
City of Detroit: Public Works Department
2 Woodward Avenue, suite 601
Detroit, MI, 48226

On behalf of the above-mentioned petitioner the Department of Public Works: City Engineering Division is submitting a petition request for the below mentioned action. The petitioner has received a project consultation from the Department of Public Works: City Engineering Division and has been advised the following:

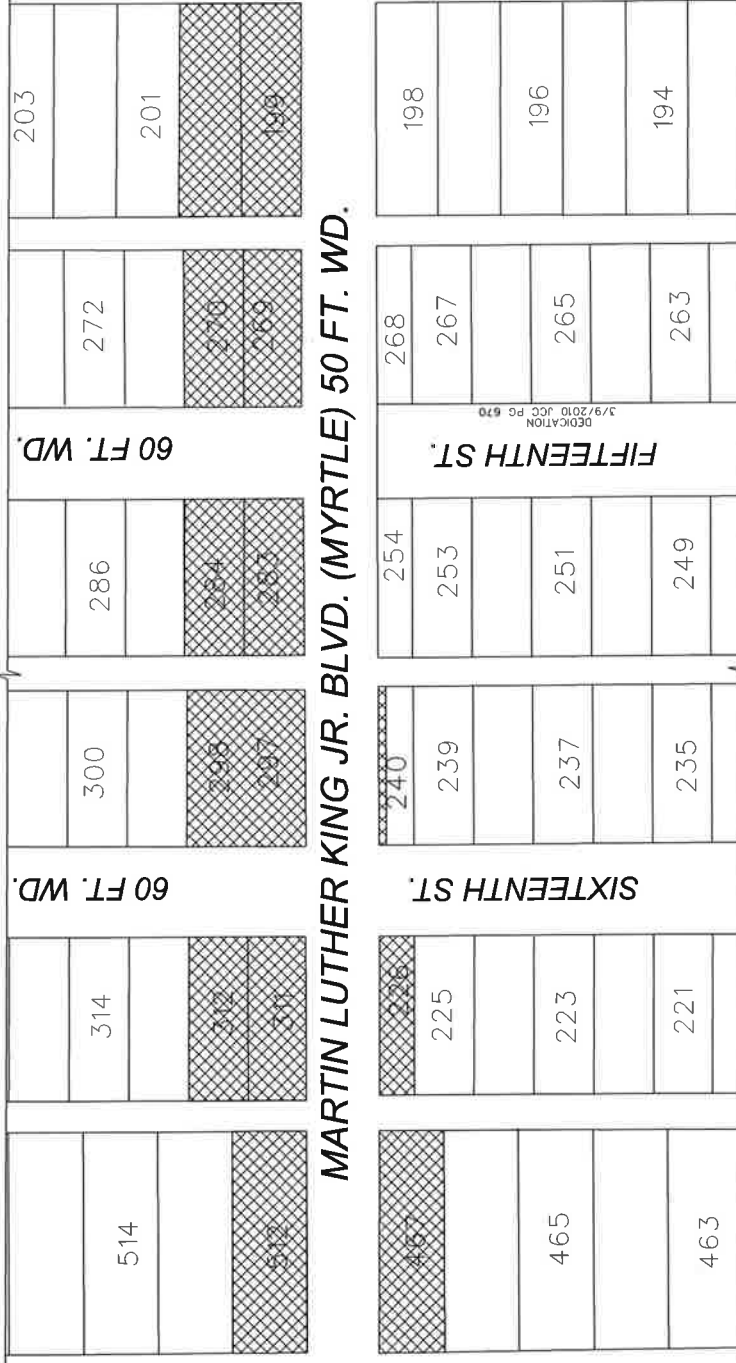
Type of action recommended:

Petition to dedicate land for the widening of MLK Blvd between 14th Street and West Grand Blvd.

Jered Dean
Manager II
Department of Public Works
City Engineering Division
313-224-3985

MAP-23-167

MAGNOLIA ST. 50 FT. WD.



- REQUEST DEDICATION OF LAND FOR THE WIDENING OF
FOR THE WIDENING OF PUBLIC STREET

(FOR OFFICE USE ONLY)

CARTO 19 A, B, & C

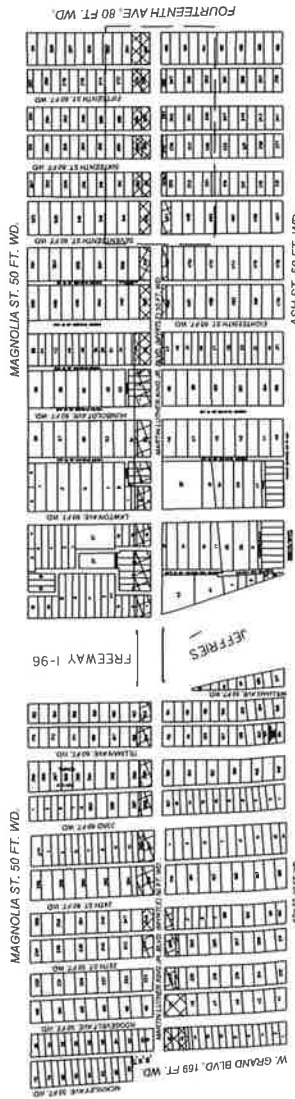
B				
A	DESCRIPTION	DRAWN	CHECKED	APPROVED DATE
	DRAWN BY LC	CHECKED	AP	
	DATE 12/05/2023	APPROVED	JD	

**REQUEST DEDICATION OF LAND FOR THE WIDENING OF
MARTIN LUTHER KING BLVD.
BETWEEN 14TH STREET AND WEST GRAND BLVD.**

CITY OF DETROIT
CITY ENGINEERING DIVISION
SURVEY BUREAU

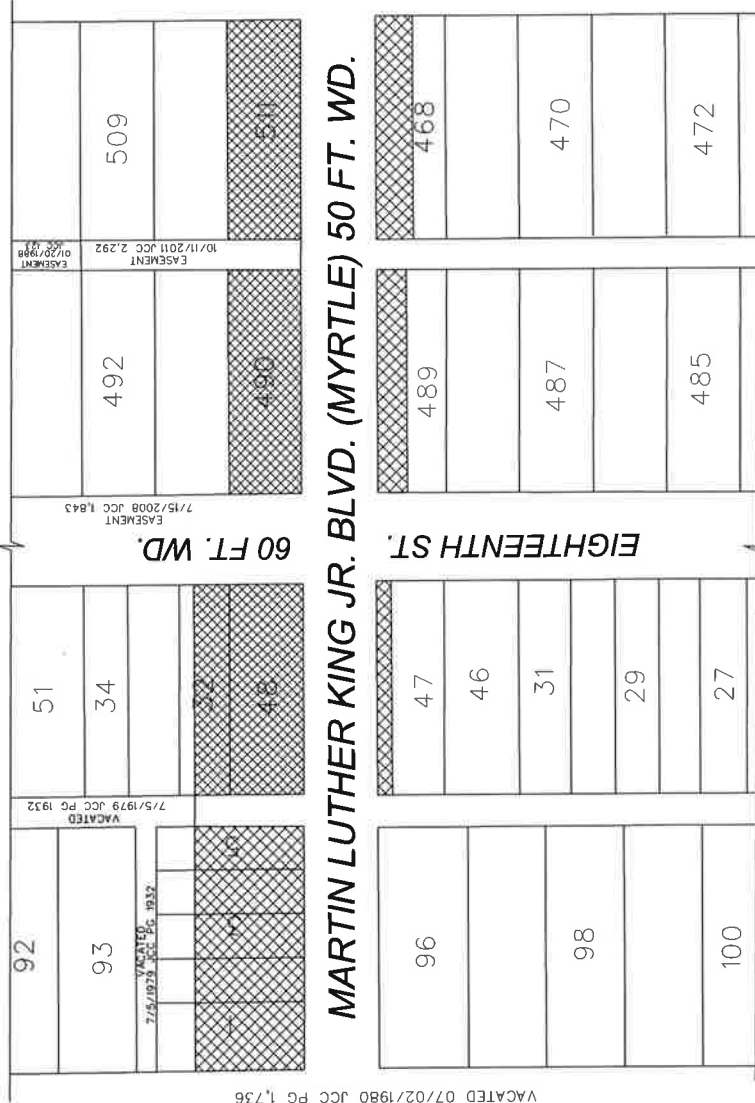
JOB NO. 23-167

DRWG. NO. 23-167_1 OF 5



MAP-23-167

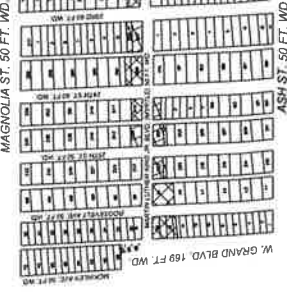
MAGNOLIA ST. 50 FT. WD.



HUMBOLDT AVE. 60 FT. WD.

SEVENTEENTH ST. 60 FT. WD.

ASH ST. 50 FT. WD.



(FOR OFFICE USE ONLY)

- REQUEST DEDICATION OF LAND FOR THE WIDENING OF PUBLIC STREET

B					
A	DESCRIPTION	DRAWN	CHECKED	APPR	DATE
	DRAWN BY	LC	CHECKED	AP	
	DATE	12/05/2023	APPROVED	JD	

REQUEST DEDICATION OF LAND FOR THE WIDENING OF
MARTIN LUTHER KING BLVD.
BETWEEN 14TH STREET AND WEST GRAND BLVD.

CITY OF DETROIT
CITY ENGINEERING DIVISION
SURVEY BUREAU

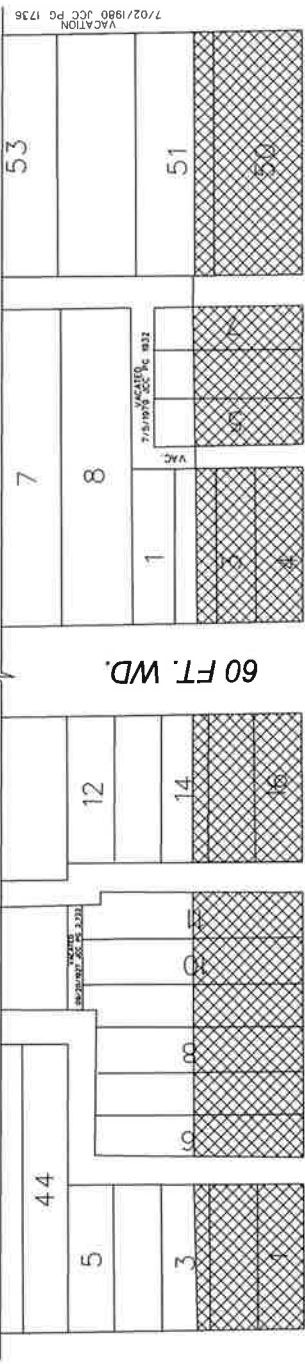
JOB NO. 23-167

DRWG. NO. 23-167_2 OF 5



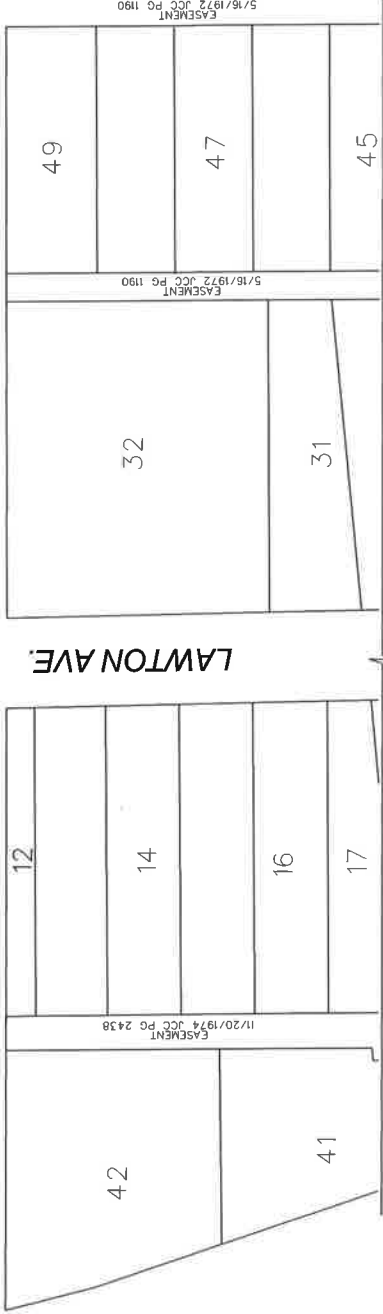
MAP-23-167

MAGNOLIA ST. 50 FT. WD.

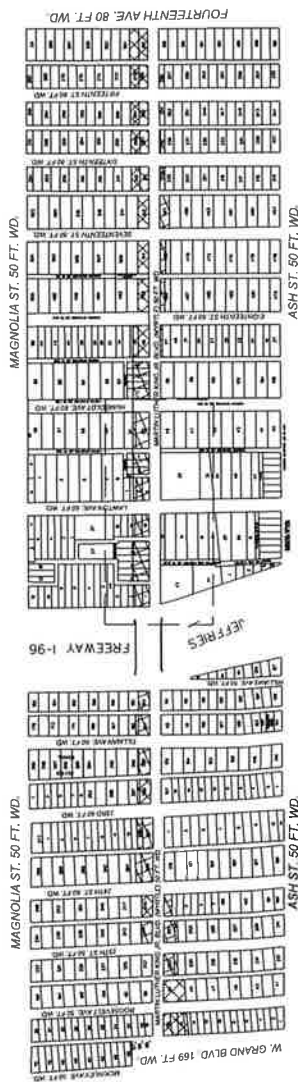


JEFFRIES FREEWAY I-96

MARTIN LUTHER KING JR. BLVD. (MYRTLE) 50 FT. WD.



ASH ST. 50 FT. WD.



- REQUEST DEDICATION OF LAND FOR THE WIDENING OF PUBLIC STREET FOR THE WIDENING OF PUBLIC STREET

(FOR OFFICE USE ONLY)

B					
A	DESCRIPTION	DRWN	CHKD	APPD	DATE
	REVISIONS				
	DRAWN BY	LC	CHECKED	AP	
	DATE	12/05/2023	APPROVED	JD	

REQUEST DEDICATION OF LAND FOR THE WIDENING OF MARTIN LUTHER KING BLVD. BETWEEN 14TH STREET AND WEST GRAND BLVD.

CITY OF DETROIT
CITY ENGINEERING DIVISION
SURVEY BUREAU

JOB NO. 23-167
DRWG. NO. 23-167_3 OF 5

CARTO 19A, B, & C



HUMBOLDT AVE. 60 FT. WD.

7/02/1980 JCC PG 1736
VACATION

5/16/1972 JCC PG 1190
EASEMENT

5/16/1972 JCC PG 1190
EASEMENT

11/20/1974 JCC PG 2438
EASEMENT

MAGNOLIA ST. 50 FT. WD.

MAGNOLIA ST. 50 FT. WD.

MAGNOLIA ST. 50 FT. WD.

FOURTEENTH AVE. 80 FT. WD.

ASH ST. 50 FT. WD.

ASH ST. 50 FT. WD.

ASH ST. 50 FT. WD.

FREEWAY I-96

JEFFRIES

W. GRAND BLVD. 169 FT. WD.

RECREATION PARK

ROBERTS AVE. 50 FT. WD.

13TH ST. 50 FT. WD.

12TH ST. 50 FT. WD.

11TH ST. 50 FT. WD.

10TH ST. 50 FT. WD.

9TH ST. 50 FT. WD.

8TH ST. 50 FT. WD.

7TH ST. 50 FT. WD.

6TH ST. 50 FT. WD.

5TH ST. 50 FT. WD.

4TH ST. 50 FT. WD.

3TH ST. 50 FT. WD.

2TH ST. 50 FT. WD.

1ST ST. 50 FT. WD.

0TH ST. 50 FT. WD.

NEGATIVE AREA 50 FT. WD.

14TH ST. 50 FT. WD.

15TH ST. 50 FT. WD.

16TH ST. 50 FT. WD.

17TH ST. 50 FT. WD.

18TH ST. 50 FT. WD.

19TH ST. 50 FT. WD.

20TH ST. 50 FT. WD.

21ST ST. 50 FT. WD.

22ND ST. 50 FT. WD.

23RD ST. 50 FT. WD.

24TH ST. 50 FT. WD.

25TH ST. 50 FT. WD.

26TH ST. 50 FT. WD.

27TH ST. 50 FT. WD.

28TH ST. 50 FT. WD.

29TH ST. 50 FT. WD.

30TH ST. 50 FT. WD.

31ST ST. 50 FT. WD.

32ND ST. 50 FT. WD.

33RD ST. 50 FT. WD.

34TH ST. 50 FT. WD.

35TH ST. 50 FT. WD.

36TH ST. 50 FT. WD.

37TH ST. 50 FT. WD.

38TH ST. 50 FT. WD.

39TH ST. 50 FT. WD.

40TH ST. 50 FT. WD.

41ST ST. 50 FT. WD.

42ND ST. 50 FT. WD.

43RD ST. 50 FT. WD.

44TH ST. 50 FT. WD.

45TH ST. 50 FT. WD.

46TH ST. 50 FT. WD.

47TH ST. 50 FT. WD.

48TH ST. 50 FT. WD.

49TH ST. 50 FT. WD.

50TH ST. 50 FT. WD.

51ST ST. 50 FT. WD.

52ND ST. 50 FT. WD.

53RD ST. 50 FT. WD.

54TH ST. 50 FT. WD.

55TH ST. 50 FT. WD.

56TH ST. 50 FT. WD.

57TH ST. 50 FT. WD.

58TH ST. 50 FT. WD.

59TH ST. 50 FT. WD.

60TH ST. 50 FT. WD.

61ST ST. 50 FT. WD.

62ND ST. 50 FT. WD.

63RD ST. 50 FT. WD.

64TH ST. 50 FT. WD.

65TH ST. 50 FT. WD.

66TH ST. 50 FT. WD.

67TH ST. 50 FT. WD.

68TH ST. 50 FT. WD.

69TH ST. 50 FT. WD.

70TH ST. 50 FT. WD.

71ST ST. 50 FT. WD.

72ND ST. 50 FT. WD.

73RD ST. 50 FT. WD.

74TH ST. 50 FT. WD.

75TH ST. 50 FT. WD.

76TH ST. 50 FT. WD.

77TH ST. 50 FT. WD.

78TH ST. 50 FT. WD.

79TH ST. 50 FT. WD.

80TH ST. 50 FT. WD.

81ST ST. 50 FT. WD.

82ND ST. 50 FT. WD.

83RD ST. 50 FT. WD.

84TH ST. 50 FT. WD.

85TH ST. 50 FT. WD.

86TH ST. 50 FT. WD.

87TH ST. 50 FT. WD.

88TH ST. 50 FT. WD.

89TH ST. 50 FT. WD.

90TH ST. 50 FT. WD.

91ST ST. 50 FT. WD.

92ND ST. 50 FT. WD.

93RD ST. 50 FT. WD.

94TH ST. 50 FT. WD.

95TH ST. 50 FT. WD.

96TH ST. 50 FT. WD.

97TH ST. 50 FT. WD.

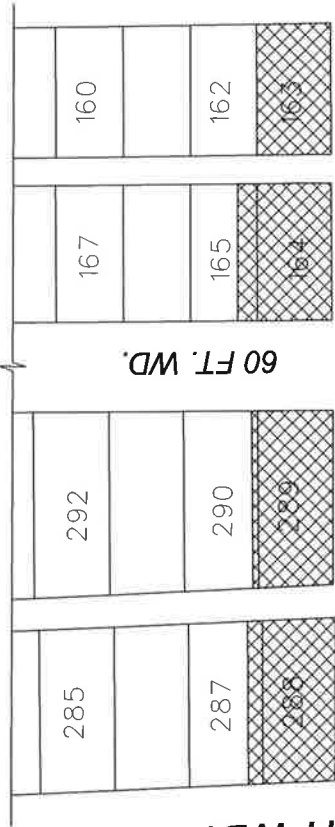
98TH ST. 50 FT. WD.

99TH ST. 50 FT. WD.

100TH ST. 50 FT. WD.

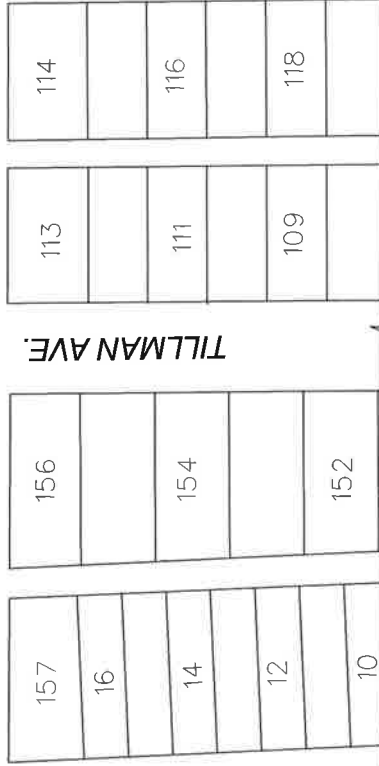
MAP-23-167

MAGNOLIA ST. 50 FT. WD.



FREEWAY I-96

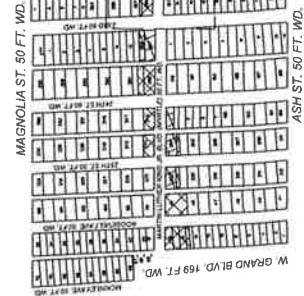
MARTIN LUTHER KING JR. BLVD. (MYRTLE) 50 FT. WD.



WILLIAMS AVE. 50 FT. WD.

JEFFRIES

ASH ST. 50 FT. WD.



ASH ST. 50 FT. WD.

ASH ST. 50 FT. WD.

ASH ST. 50 FT. WD.

ASH ST. 50 FT. WD.

ASH ST. 50 FT. WD.

- REQUEST DEDICATION OF LAND FOR THE WIDENING OF PUBLIC STREET FOR THE WIDENING OF PUBLIC STREET

B					
A	DESCRIPTION	DRWN	CHKD	APPD	DATE
	REVISIONS				
	DRAWN BY	LC	CHECKED	AP	
	DATE	12/05/2023	APPROVED	JD	

REQUEST DEDICATION OF LAND FOR THE WIDENING OF MARTIN LUTHER KING BLVD. BETWEEN 14TH STREET AND WEST GRAND BLVD.

CITY OF DETROIT
 CITY ENGINEERING DIVISION
 SURVEY BUREAU
 JOB NO. 23-167
 DRWG. NO. 23-167_4 OF 5

CARTO 19 A, B, & C



FOURTEENTH AVE. 80 FT. WD.

MAGNOLIA ST. 50 FT. WD.

MAGNOLIA ST. 50 FT. WD.

MAGNOLIA ST. 50 FT. WD.

MAGNOLIA ST. 50 FT. WD.

MAGNOLIA ST. 50 FT. WD.

FREEWAY-96

JEFFRIES

W GRAND BLVD. 169 FT. WD.

ASH ST. 50 FT. WD.

ASH ST. 50 FT. WD.

ASH ST. 50 FT. WD.

ASH ST. 50 FT. WD.

ASH ST. 50 FT. WD.

ASH ST. 50 FT. WD.

ASH ST. 50 FT. WD.

ASH ST. 50 FT. WD.

ASH ST. 50 FT. WD.

ASH ST. 50 FT. WD.

ASH ST. 50 FT. WD.

ASH ST. 50 FT. WD.

ASH ST. 50 FT. WD.

ASH ST. 50 FT. WD.

ASH ST. 50 FT. WD.

ASH ST. 50 FT. WD.

ASH ST. 50 FT. WD.

ASH ST. 50 FT. WD.

ASH ST. 50 FT. WD.

ASH ST. 50 FT. WD.

ASH ST. 50 FT. WD.

ASH ST. 50 FT. WD.

ASH ST. 50 FT. WD.

ASH ST. 50 FT. WD.

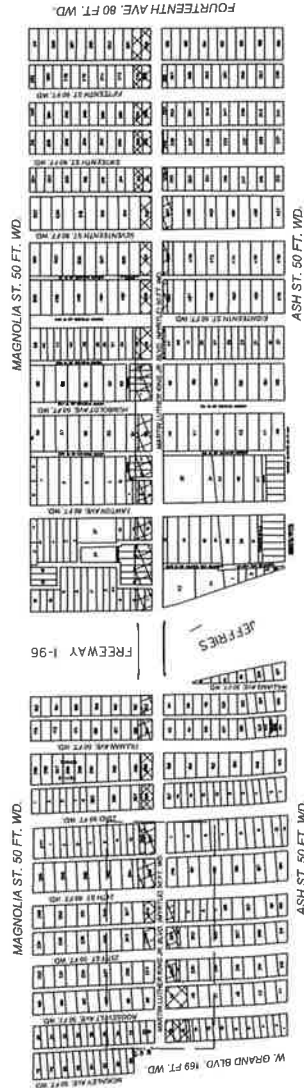
ASH ST. 50 FT. WD.

MAP-23-167

MAGNOLIA ST. 50 FT. WD.



ASH ST. 50 FT. WD.



- REQUEST DEDICATION OF LAND FOR THE WIDENING OF PUBLIC STREET FOR THE WIDENING OF PUBLIC STREET

(FOR OFFICE USE ONLY)

CARTO 19 A, B, & C

B					
A	DESCRIPTION	DRWN	CHKD	APPD	DATE
	DRAWN BY	LC	CHECKED	AP	
	DATE	12/05/2023	APPROVED	JD	

CITY OF DETROIT
 CITY ENGINEERING DIVISION
 SURVEY BUREAU

JOB NO. 23-167
 DRWG. NO. 23-167_5 OF 5

REQUEST DEDICATION OF LAND FOR THE WIDENING OF MARTIN LUTHER KING BLVD. BETWEEN 14TH STREET AND WEST GRAND BLVD.

