

Janice M. Winfrey
City Clerk

City of Detroit
OFFICE OF THE CITY CLERK

Andre P. Gilbert II
Deputy City Clerk

DEPARTMENT PETITION REFERENCE COMMUNICATION

To: The Department or Commission Listed Below

From: Janice M Winfrey, Detroit City Clerk

The following petition is herewith referred to you for report and recommendation to the City Council.

In accordance with that body's directive, kindly return the same with your report in duplicate within four (4) weeks.

Petition No.	2024-006
Name of Petitioner	Detroit Land Bank
Description of Petition	Please see request to vacate part of Rosa Parks Blvd lying between Atkinson Avenue and Clairmount Avenue
Type of Petition	Alley Vacation/ Encroachment/ Utility Vacation
Submission Date	1/4/2024
Concerned Departments	Department of Public Works, Planning and Development Department, City Engineering Division
Petitioner Contact	Detroit Land Bank -Dan Buckley 500 Griswold STE 1200 Detroit, MI 48226



**CITY OF DETROIT
DEPARTMENT OF PUBLIC WORKS
CITY ENGINEERING DIVISION**

**COLEMAN A. YOUNG MUNICIPAL CENTER
2 WOODWARD AVE. SUITE 601
DETROIT, MICHIGAN 48226
PHONE: (313) 224-3949 TTY: 711
WWW.DETROITMI.GOV**

To: Clerk's Office
From: The Department of Public Works
City Engineering Division
MapsandRecordsBureau@DetroitMI.Gov
(313) 224-3970

Petitioner:
Detroit Land Bank
500 Griswold, Suite 1200
Detroit, MI, 48226

On behalf of the above-mentioned petitioner the Department of Public Works: City Engineering Division is submitting a petition request for the below mentioned action. The petitioner has received a project consultation from the Department of Public Works: City Engineering Division and has been advised the following:

Type of action recommended:

Petition to vacate part of Rosa Parks Blvd lying between Atkinson Avenue and Clairmount Avenue.

Jered Dean
Manager II
Department of Public Works
City Engineering Division
313-224-3985

November 2, 2023

Petition MAP-21-159

To whom it concerns,

My name is Dan Buckley, and I work with the Planning and Analysis department at the Detroit Land Bank Authority. In 2011, the DLBA was deeded three (**08007704., 08007705., 08007706.001**) parcels on Rosa Parks on the northeast corner of Clairmount. In 2018, there was a road dedication that formalized Rosa Parks' expansion into these parcels. In 2022, maps were updated, and these three parcels were essentially erased. What remains is an unincorporated piece of land.

We would like to get the remaining property back to private ownership and see it activated, as the neighborhood it falls within is seeing an influx of development.

I reached out to the Assessor, as well as Maps and Records, and was instructed to put the three retired parcels through the ROW vacation process in order to properly reobtain parcels. I am not requesting utilities be removed. I am solely looking for the following:

- New legal description for the parcel(s)
- New parcel ID(s)

Within my application package I'm including a copy of the 2011 transfer of property to the DLBA, the Rosa Parks ROW Dedication from 2018, and a couple images of the parcels before and after a map update this year.

Please do let me know what other information is needed to get this through the "vacation" process, and don't hesitate to reach out with any and all questions/concerns.

Thanks,

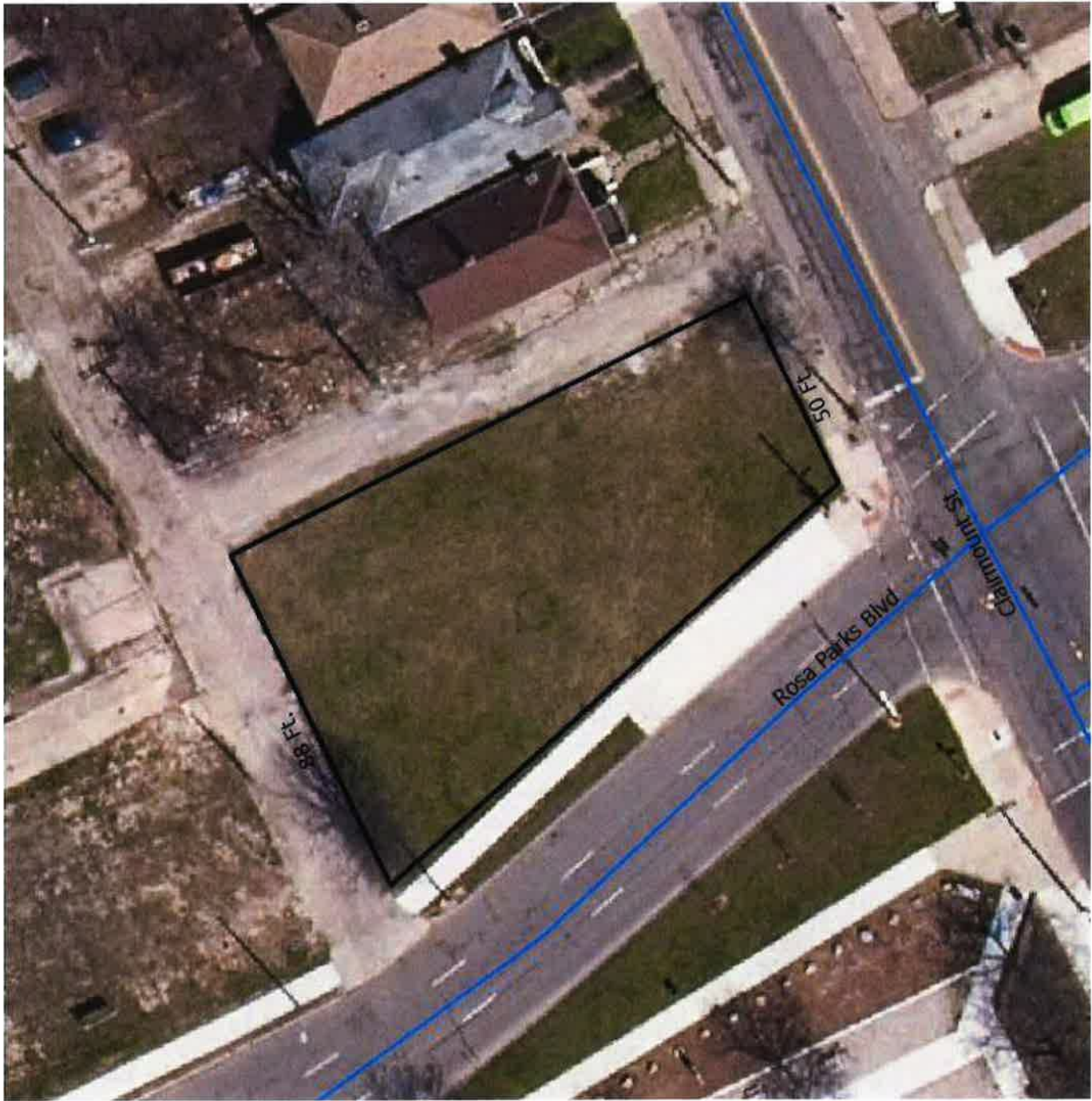


Dan Buckley (He/Him)
Project Manager I, Planning and Analysis

Hours of Operation: Monday – Friday; 9:00 a.m. - 5:00 p.m.

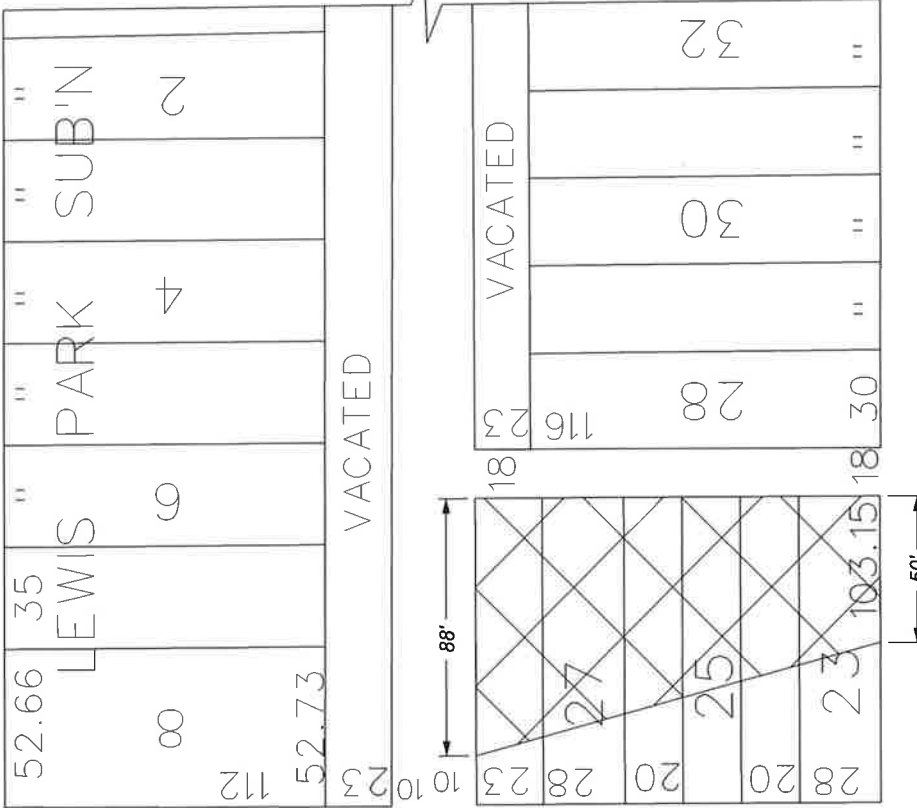
500 Griswold, Suite 1200 | Detroit, MI 48226

Office: 313.989.0118



MAP-23-159

ATKINSON AVE. 66 FT. WD.



ROSA PARKS BLVD. (12TH) 66 FT. WD.

WOODROW WILSON AVE. 66 FT. WD.

CLAIRMOUNT AVE. 60 FT. WD.



- REQUEST VACATION WITH EASEMENT

(FOR OFFICE USE ONLY)

CARTO 32 D

B					
A	DESCRIPTION	DRWN	CHKD	APPD	DATE
	DRAWN BY	LC	CHECKED	AP	
	DATE	11-13-2023	APPROVED	JD	

REQUEST VACATION WITH EASEMENT OF PORTIONS OF LOTS 23-28
ALONG ROSA PARKS BLVD., IN THE AREA BOUNDED BY
ROSA PARKS BLVD., CLAIRMOUNT AVE.,
WOODROW WILSON AVE., AND ATKINSON AVE.

CITY OF DETROIT
CITY ENGINEERING DIVISION
SURVEY BUREAU

JOB NO. 23-159

DRWG. NO.

