

# City of Detroit

Janice M. Winfrey  
City Clerk

OFFICE OF THE CITY CLERK

Andre P. Gilbert II  
Deputy City Clerk

## DEPARTMENT PETITION REFERENCE COMMUNICATION

*To: The Department or Commission Listed Below*

*From: Janice M Winfrey, Detroit City Clerk*

---

The following petition is herewith referred to you for report and recommendation to the City Council.

In accordance with that body's directive, kindly return the same with your report in duplicate within four (4) weeks.

---

Petition No.	2024-004
Name of Petitioner	Rhema International Church
Description of Petition	Please see request for the temporary closure of the public alley lying between Carlisle Drive and Collingham Drive, lying adjacent to the property commonly known as 20531 Kelly Rd.
Type of Petition	<b>Alley Vacation/ Encroachment/ Utility Vacation</b>
Submission Date	1/4/2024
Concerned Departments	Department of Public Works, Planning and Development Department, City Engineering Division
Petitioner Contact	Rhema International Church – Bishop Eric Boyd 20531 Kelly RD Detroit, MI 48236 313-245-9055 & 586-459-7972



**CITY OF DETROIT  
DEPARTMENT OF PUBLIC WORKS  
CITY ENGINEERING DIVISION**

**COLEMAN A. YOUNG MUNICIPAL CENTER  
2 WOODWARD AVE. SUITE 601  
DETROIT, MICHIGAN 48226  
PHONE: (313) 224-3949 TTY: 711  
WWW.DETROITMI.GOV**

---

To: Clerk's Office  
From: The Department of Public Works  
City Engineering Division  
MapsandRecordsBureau@DetroitMI.Gov  
(313) 224-3970

Petitioner:  
Rhema International Church  
20531 Kelly Rd  
Detroit, MI, 48236

On behalf of the above-mentioned petitioner the Department of Public Works: City Engineering Division is submitting a petition request for the below mentioned action. The petitioner has received a project consultation from the Department of Public Works: City Engineering Division and has been advised the following:

Type of action recommended:

Petition for the temporary closure of the public alley lying between Carlisle Drive and Collingham Drive, lying adjacent to the property commonly known as 20531 Kelly Rd.

Jered Dean  
Manager II  
Department of Public Works  
City Engineering Division  
313-224-3985

Rhema International Church  
Bishop Eric Lloyd  
20531 Kelly Rd.  
(313) 245-9055

Cover Letter  
MAP-23-152

To whom it may concern, we been using the alleyway since we purchased this church property in 2017. It's apart of the parking lot. We would like to continue to using it as such.

We are updating the previous petition 271.

Bishop Eric Lloyd  
(586) 459-7972



**City of Detroit: Encroachments**

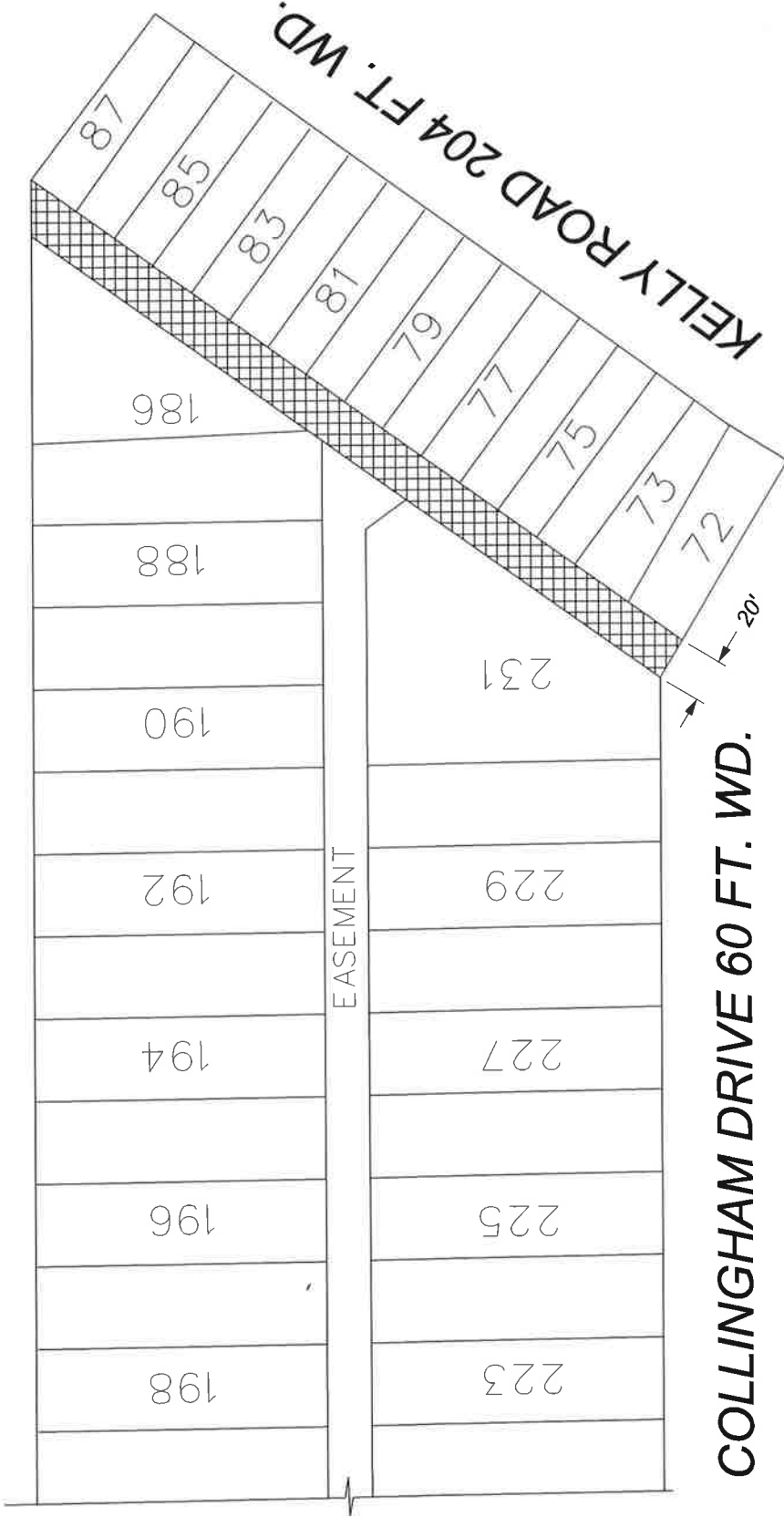
Review ID	1292
Petition Number	x271_2015
Petitioner Name	Resurrection Lutheran Church Missouri Synod
Owner Name	RHEMA INTERNATIONAL CHURCH
Encroachment Type	Temporary Closed
Type Code	7

[Zoom to](#)

MAP-23-152



CARLISLE DRIVE 60 FT. WD.



CUSHING AVE. 86 FT. WD.

COLLINGHAM DRIVE 60 FT. WD.



- REQUEST RENEWAL OF TEMPORARY CLOSURE

(FOR OFFICE USE ONLY)

CARTO 95 A

B					
A	DESCRIPTION	DRWN	CHKD	APPD	DATE
	REVISIONS				
	DRAWN BY	LC	CHECKED	AP	
	DATE	10-17-2023	APPROVED	JD	

RENEWAL OF TEMPORARY ALLEY CLOSURE OF THE  
 NORTH/SOUTH PUBLIC ALLEY 20 FT. WD.  
 IN THE BLOCK BOUNDED BY COLLINGHAM DR.,  
 CUSHING AVE., CARLISLE DR., AND KELLY RD.

CITY OF DETROIT  
 CITY ENGINEERING DIVISION  
 SURVEY BUREAU

JOB NO. 23-152

DRWG. NO.