



CITY OF DETROIT  
DEPARTMENT OF PUBLIC WORKS  
CITY ENGINEERING DIVISION

COLEMAN A. YOUNG MUNICIPAL CENTER  
2 WOODWARD AVE. SUITE 601  
DETROIT, MICHIGAN 48226  
PHONE: (313) 224-3949 TTY: 711  
WWW.DETROITMI.GOV

---

To: Clerk's Office  
From: The Department of Public Works  
City Engineering Division  
MapsandRecordsBureau@DetroitMI.Gov  
(313) 224-3970

Petitioner:  
CHN Housing Partners  
2625 Gratiot Avenue  
Detroit, MI, 48027

On behalf of the above-mentioned petitioner the Department of Public Works: City Engineering Division is submitting a petition request for the action below. The petitioner has received a project consultation from the Department of Public Works: City Engineering Division and has been advised the following:

Type of action recommended:

Petition for the Outright Vacation of Archdale Street, lying north of West Warren Avenue and south of the parcel commonly known as 7310 Southfield.

Jered Dean  
Manager II  
Department of Public Works  
City Engineering Division  
313-224-3985



August 21, 2023

Honorable Detroit City Council  
C/o Detroit City Clerk  
200 Coleman A. Young Municipal Center  
2 Woodward Avenue  
Detroit, Michigan 48226

RE: Giffels Webster – Request for Vacation of Public right-of-way

Project: Archdale Senior Housing

Giffels Webster, 28 W. Adams, Suite 1200, Detroit, Michigan 48226 on behalf of CHN Housing Partners, 2625 Gratiot Ave., Detroit MI 48027, respectfully requests the outright vacation of the following public alley and public right of way.

- The outright vacation of Archdale Ave. (50 feet wide) located between south of former Ruddman school parcel (parcel #22072794-5), the north of first alley north and parallel with West Warren Ave.

Giffels Webster has been asked to facilitate the requested vacation. Please refer to the attachment enclosed for further clarification of the requested vacation.

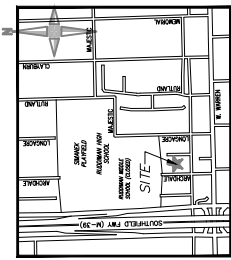
If you should have any questions, please do not hesitate to contact me at (M) 313.962.4442 or at [droot@giffelswebster.com](mailto:droot@giffelswebster.com).

Respectfully,

A handwritten signature in black ink, appearing to read "Dave Root", with a stylized flourish at the end.

Dave Root

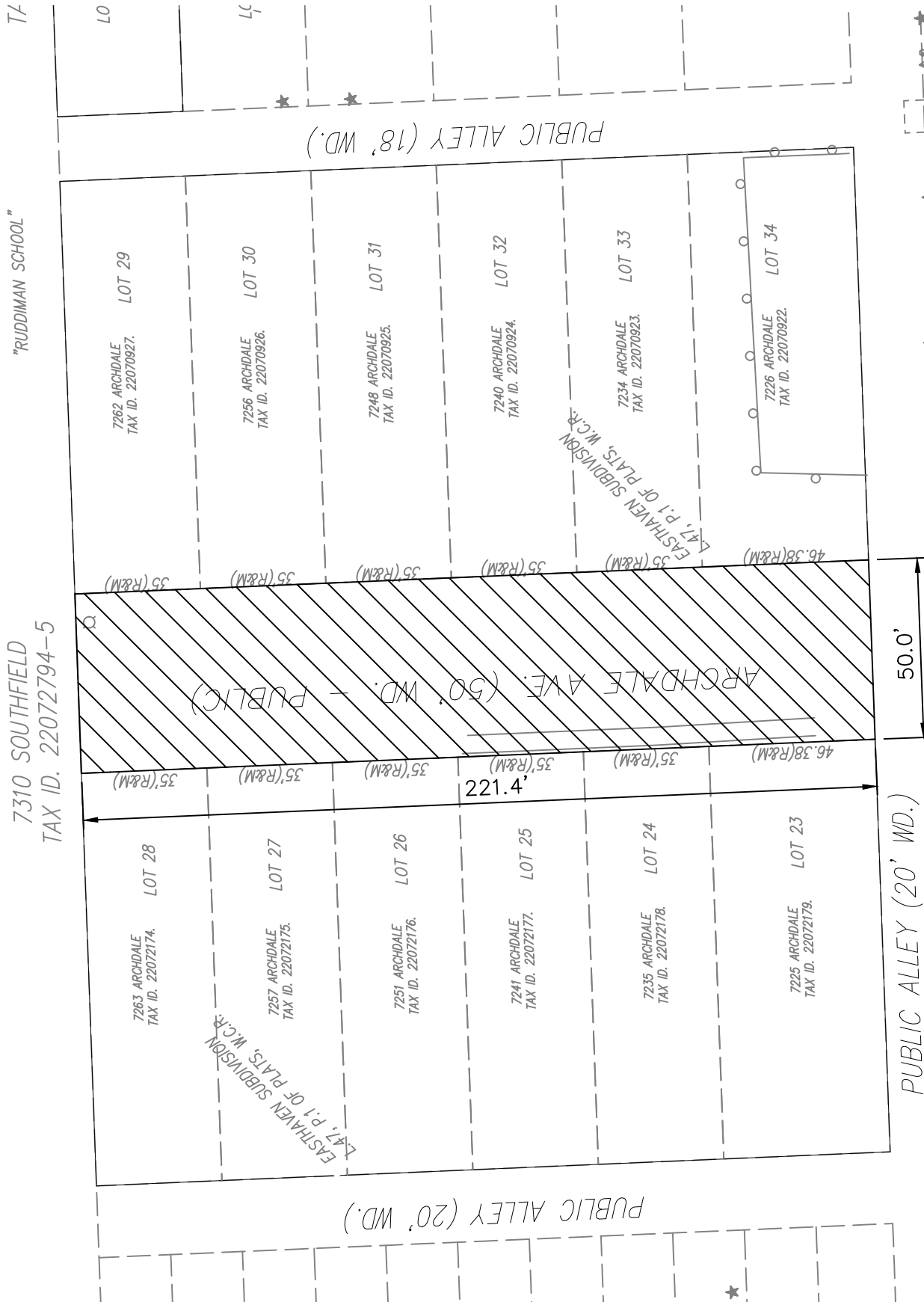
Senior Project Manager  
Giffels Webster



LOCATION MAP  
(NOT TO SCALE)



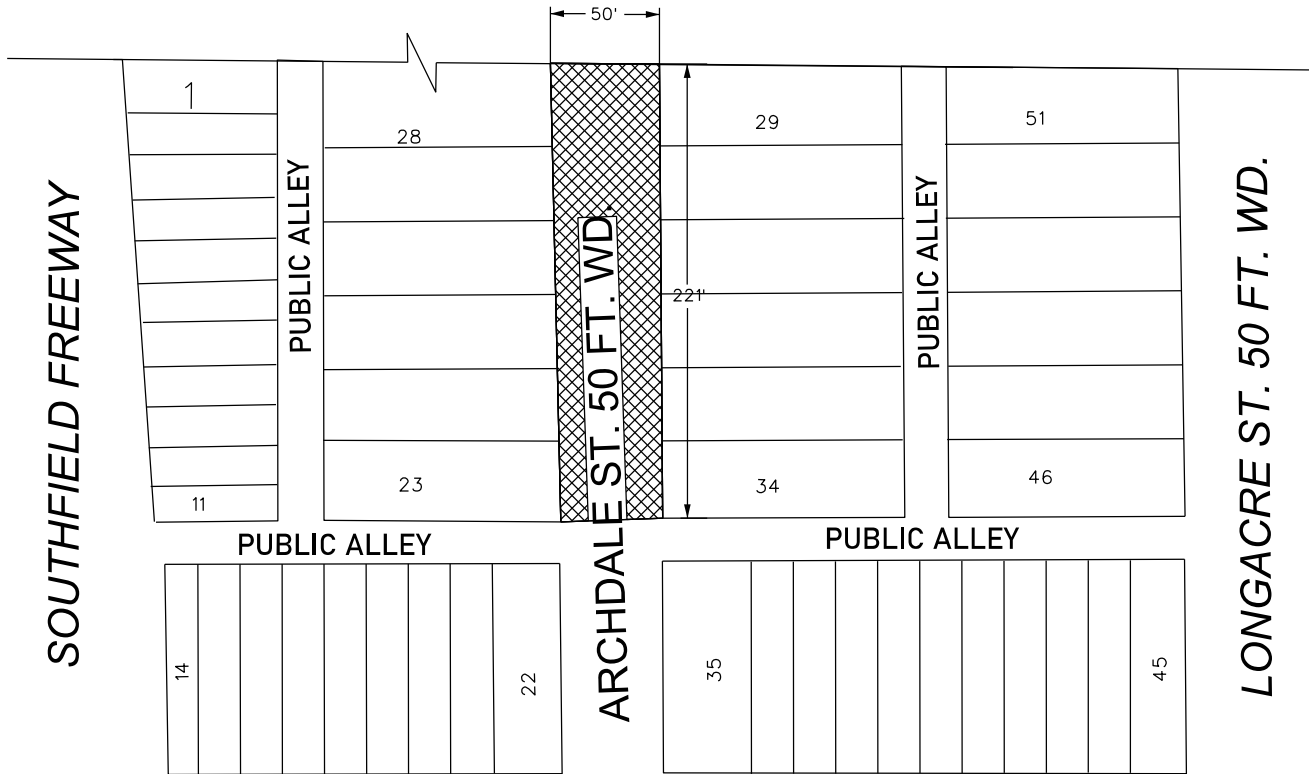
SCALE: 1" = 40'



MAP-23-115



DIVERSEY AVE. 50 FT. WD.



W. WARREN AVE. 106 FT. WD.



- OUTRIGHT VACATION

(FOR OFFICE USE ONLY)

CARTO 99E

<b>B</b>					
<b>A</b>					
<b>DESCRIPTION</b>		<b>DRWN</b>	<b>CHKD</b>	<b>APPD</b>	<b>DATE</b>
<b>REVISIONS</b>					
<b>DRAWN BY</b>	SR	<b>CHECKED</b>		LC	
<b>DATE</b>	08-23-2023	<b>APPROVED</b>		JD	

REQUEST TO OUTRIGHT VACATE  
 A PORTION OF ARCHDALE AVE. 50 FT. WD.  
 IN THE BLOCK BOUNDED BY DIVERSEY AVE.  
 LONGACRE ST., W. WARREN AVE., AND  
 THE SOUTHFIELD FREEWAY.

<b>CITY OF DETROIT</b>	
CITY ENGINEERING DIVISION	
SURVEY BUREAU	
<b>JOB NO.</b>	23-116
<b>DRWG. NO.</b>	