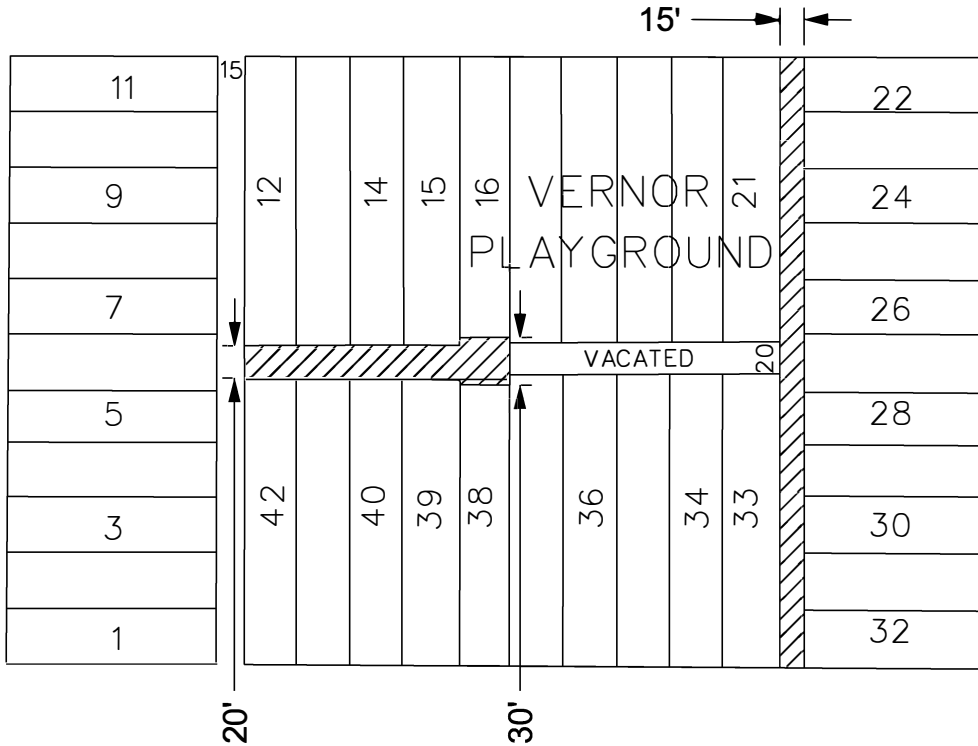




EDSEL FORD E. SERVICE DR. 40 FT. WD.

CHENE ST. 66 FT. WD.



GRANDY AVE. 66 FT. WD.

MEDBURY AVE 60 FT. WD.



- VACATION TO UTILITY EASEMENT

(FOR OFFICE USE ONLY)

CARTO 41 E

B						<p>REQUEST TO VACATE WITH RESERVE OF A UTILITY EASEMENT THE EAST/WEST ALLEY 20 FT. WD. AND THE NORTH/SOUTH ALLEY 15 FT. WD. BOUNDED BY HARPER AVE., GRANDY AVE., MEDBURY AVE., AND CHENE ST.</p>	<p>CITY OF DETROIT CITY ENGINEERING DIVISION SURVEY BUREAU</p>	
A								
<p>REVISIONS</p>								
DESCRIPTION	DRWN	CHKD	APPD	DATE				JOB NO. 23-136
DRAWN BY SR	CHECKED LC							DRWG. NO.
DATE 09-20-2023	APPROVED JD							