



CITY OF DETROIT
DEPARTMENT OF PUBLIC WORKS
CITY ENGINEERING DIVISION

COLEMAN A. YOUNG MUNICIPAL CENTER
2 WOODWARD AVE. SUITE 601
DETROIT, MICHIGAN 48226
PHONE: (313) 224-3949 TTY: 711
WWW.DETROITMI.GOV

To: Clerk's Office
From: The Department of Public Works
City Engineering Division
MapsandRecordsBureau@DetroitMI.Gov
(313) 224-3970

Petitioner:
General Services Department
115 Erskine St.
Detroit, MI, 48201

On behalf of the above-mentioned petitioner the Department of Public Works: City Engineering Division is submitting a petition request for the action below. The petitioner has received a project consultation from the Department of Public Works: City Engineering Division and has been advised the following:

Type of action recommended:

Petition for the vacation, with reserve of utility easement, of the remaining east-west public alley bounded by Harper Avenue, Grandy Avenue, Medbury Avenue, and Chene Street.

Jered Dean
Manager II
Department of Public Works
City Engineering Division
313-224-3985



CITY OF DETROIT
GENERAL SERVICES DEPARTMENT

115 ERSKINE ST.
DETROIT, MICHIGAN 48201
PHONE 313 • 224-1100
FAX 313 • 628-1915

City of Detroit
DPW Maps and Records
Coleman A. Young Municipal Center
2 Woodward Ave
Detroit, MI 48226

VACATION LETTER OF INTENT

DATE: September 18, 2023

APPLICANT: CRYSTAL PERKINS, DIRECTOR, GENERAL SERVICES DEPARTMENT

Perkinsc@detroitmi.gov 313.300.7107

The City of Detroit General Services Department on behalf of Detroit Parks and Recreation proposes the vacation of the following streets and or alleys in order to assemble park parcels:

LOCATION: VERNOR PLAYGROUND
2627 MEDBURY 11001864-73 & 5947 GRANDY 11003760-833

SPECIFICS:

- (1) Partial Park entry street
- (1) alley located between the two parcels

INDICATED ON SITE PLAN - PAGE 2.

COMMUNITY ENGAGEMENT: None required. Detroit Parks and Recreation is the sole property owner impacted by these vacations.

NOTES: Our Park files show no evidence of previous vacation.

Please contact Andrea Gallucci @andrea.gallucci@detroitmi.gov with any questions.

Sincerely,

Crystal Perkins

City of Detroit, General Services Department, Director



SITE PLAN

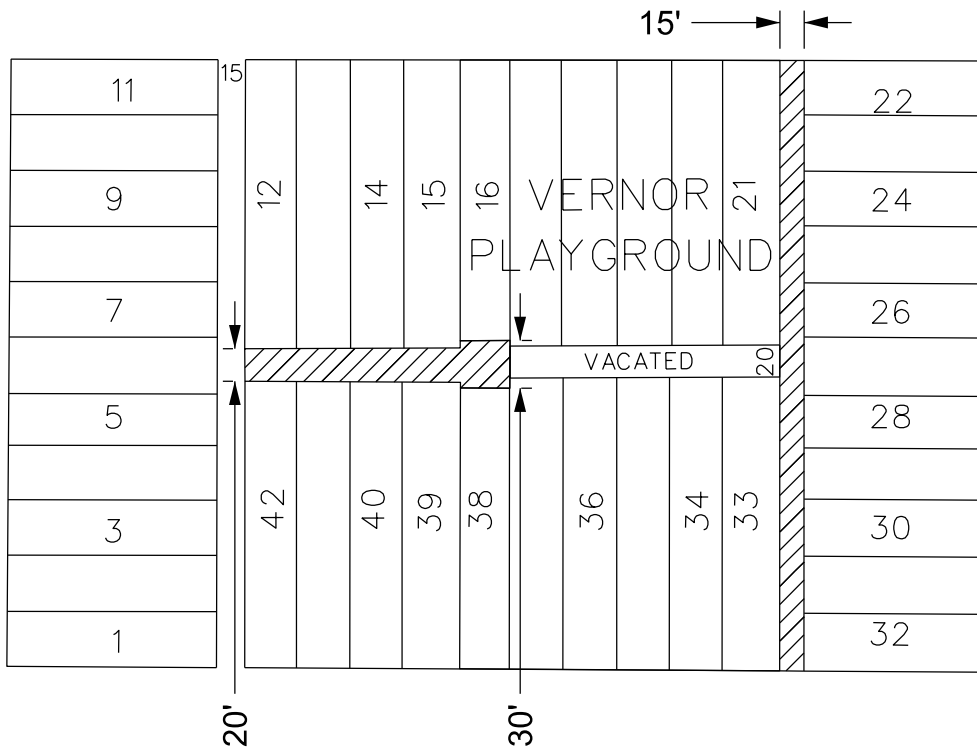


##



HARPER AVE. 40 FT. WD.

CHENE ST. 66 FT. WD.



GRANDY AVE. 66 FT. WD.

MEDBURY AVE 60 FT. WD.



- VACATION TO UTILITY EASEMENT

(FOR OFFICE USE ONLY)

CARTO 41 E

B						REQUEST TO VACATE WITH RESERVE OF A UTILITY EASEMENT THE EAST/WEST ALLEY 20 FT. WD. AND THE NORTH/SOUTH ALLEY 15 FT. WD. BOUNDED BY HARPER AVE., GRANDY AVE., MEDBURY AVE., AND CHENE ST.	CITY OF DETROIT CITY ENGINEERING DIVISION SURVEY BUREAU		
A									
DESCRIPTION		DRWN	CHKD	APPD	DATE			JOB NO.	23-136
REVISIONS		CHECKED		LC				DRWG. NO.	
DRAWN BY	SR	APPROVED		JD					
DATE	09-20-2023								