



CITY OF DETROIT
DEPARTMENT OF PUBLIC WORKS
CITY ENGINEERING DIVISION

COLEMAN A. YOUNG MUNICIPAL CENTER
2 WOODWARD AVE. SUITE 601
DETROIT, MICHIGAN 48226
PHONE: (313) 224-3949 TTY: 711
WWW.DETROITMI.GOV

To: Clerk's Office
From: The Department of Public Works
City Engineering Division
MapsandRecordsBureau@DetroitMI.Gov
(313) 224-3970

Petitioner:
Grand River LLC
28 Grand River
Detroit, MI, 48226

On behalf of the above-mentioned petitioner the Department of Public Works: City Engineering Division is submitting a petition request for the action below. The petitioner has received a project consultation from the Department of Public Works: City Engineering Division and has been advised the following:

Type of action recommended:

Petition for a encroachment of an on-site advertising sign located on the north side of Grand River adjacent to the parcel commonly known as 28 Grand River Avenue.

Jered Dean
Manager II
Department of Public Works
City Engineering Division
313-224-3985



11444 Kaltz Ave. Warren, MI 48089
P: (586)759-2700 F: (586)759-2703
kdeters@metrodetroitsigns.com

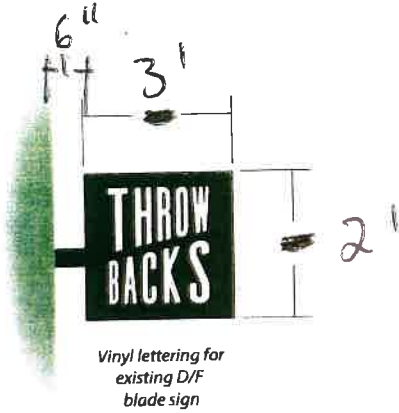
DATE: 6/12/23
TO: City of Detroit
FROM: Kevin Deters
Metro Detroit Signs
RE: Throwbacks Home at 28 W Grand River
face change on the projecting sign
SGN2023-00005

We are applying a face change on the projecting sign (SGN2023-00005) on the south elevation at Throwbacks Home. The face change on the projecting sign is an aluminum face with push thru acrylic letters.

The proposed sign is a face change from the previous tenant "Lovers Only" to "Throwbacks." We have a certificate of appropriateness from Detroit Historic. Also, the sign permit will be approved pending encroachment approval.


Feel free to call me at (586)759-2700 if anything else is needed. Thank you for your assistance.

Kevin Deters 6-12-23



ELEVATION

Face change on Projecting Sign
 2' x 3' = 6 φ , 12.5' underclearance

	Sales Person: Matt Thomas	Drawn By: Steve	Date: 10/09/2022	File Name: THROWBACKS	Revision: XX/XX/XX
	<p>This drawing and design/layout is the property of Metro Detroit Signs. The use of which in part or in whole is not permitted without prior written consent from Metro Detroit Signs. All rights reserved. Copyright 2018</p>				Work Order#: XXX
<p>Customer Signature _____ Date _____</p>					

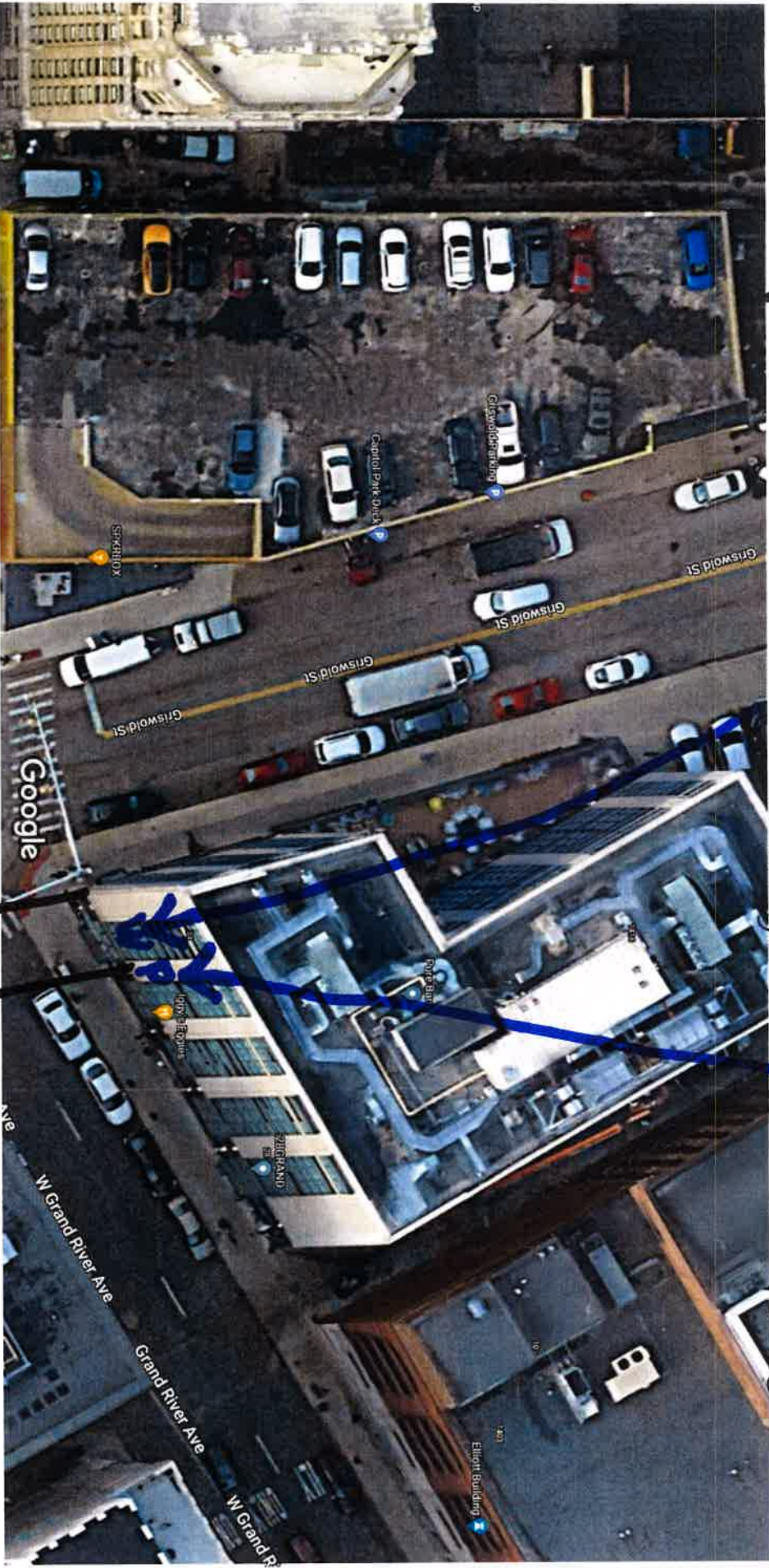


Google Maps

N
↑ Site Plan

W = Two backwards Home
Wall Sign

P = Face change on
Projecting Sign



135 ft
tenant frontage

Map data ©2023, Map data ©2023 Google 20 ft

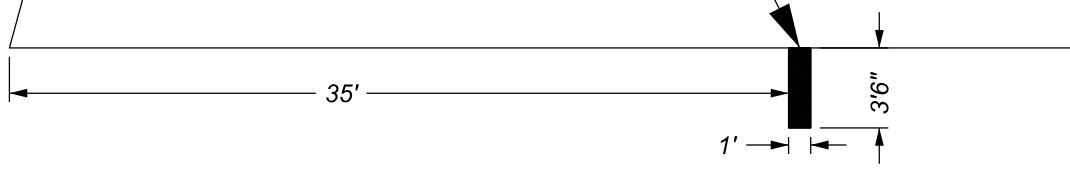
MAP-23-77



GRISWOLD ST. 60 FT. WD.

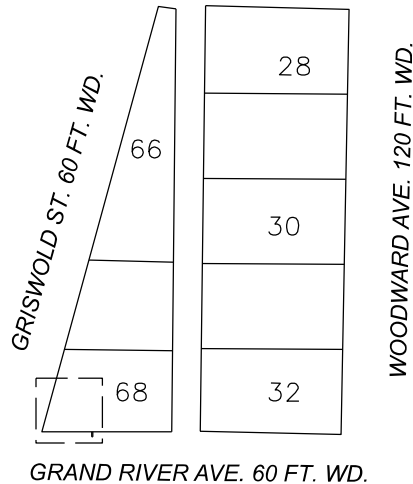
68

PROJECTING SIGN
12.5' ABOVE GRADE



GRAND RIVER AVE. 60 FT. WD.

CLIFFORD ST. 60 FT. WD.



NOTE: 2'x3' Projecting Sign,
12.5' Above Grade



- REQUEST ENCROACHMENT

(FOR OFFICE USE ONLY)

CARTO 28 B

B					
A					
DESCRIPTION	DRWN	CHKD	APPD	DATE	
REVISIONS					
DRAWN BY	LC	CHECKED	AP		
DATE	07-06-2023	APPROVED	JD		

**REQUEST ENCROACHMENT
AT 28 W. GRAND RIVER AVE.
NEAR GRISWOLD AVE.**

CITY OF DETROIT CITY ENGINEERING DIVISION SURVEY BUREAU	
JOB NO.	23-77
DRWG. NO.	