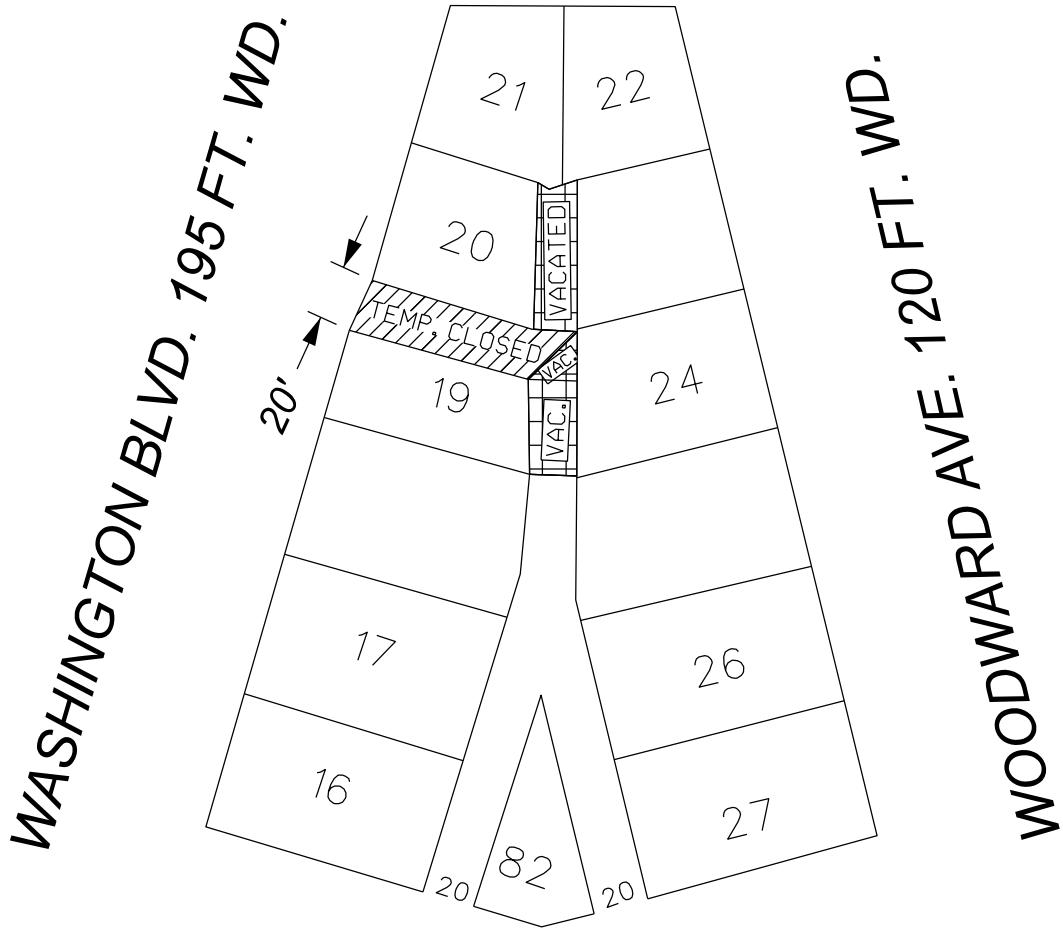
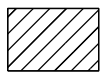




PARK AVE. 60 FT. WD.



CLIFFORD AVE. 60 FT. WD.



- RENEWAL OF TEMPORARY CLOSURE

(FOR OFFICE USE ONLY)

CARTO 28 B

B					
A					
DESCRIPTION	DRWN	CHKD	APPD	DATE	
REVISIONS					
DRAWN BY	SR	CHECKED	LC		
DATE	07-28-2023	APPROVED	JD		

RENEWAL OF TEMPORARY ALLEY
 CLOSURE OF THE EAST/ WEST
 PUBLIC ALLEY 20 FT. WD.
 IN THE BLOCK BOUNDED BY
 PARK, WOODWARD, CLIFFORD AVENUES
 AND WASHINGTON BLVD.

CITY OF DETROIT	
CITY ENGINEERING DIVISION	
SURVEY BUREAU	
JOB NO.	23-104
DRWG. NO.	