

PAVING PLAN - LEGEND

- PROVIDE AND INSTALL 4" CONCRETE PAVEMENT
- PROVIDE AND INSTALL 8" CONCRETE PAVEMENT
- PROVIDE AND INSTALL ASPHALT PAVEMENT FULL DEPTH
- PROVIDE AND INSTALL BRICK PAVEMENT. REFER TO LANDSCAPE PLAN FOR DETAILS
- PROVIDE AND INSTALL FINE AGGREGATE, CRUSHED GRANITE. REFER TO LANDSCAPE PLAN FOR DETAILS
- PROVIDE AND INSTALL LOOSE STONE AGGREGATE. REFER TO LANDSCAPE PLAN FOR DETAILS
- PROVIDE AND INSTALL SPECIALTY PAVEMENT. REFER TO LANDSCAPE PLAN FOR DETAILS
- PROVIDE AND INSTALL EXISTING PAVEMENT MILL & OVERLAY
- PROPOSED LANDSCAPE AREA
- UTILITY TRENCH PAVEMENT RESTORATION PER CITY OF DETROIT STANDARD DETAILS. SEE SHEET C-800
- PROVIDE AND INSTALL 6" CONCRETE PAVEMENT
- PROVIDE AND INSTALL RECESSED CONCRETE PAVEMENT WITH RUBBER SURFACE
- EXISTING PORCH REPLACEMENT PER ARCHITECTURE PLANS
- SCOPE OF WORK

GEOMETRIC AND PAVING PLAN - KEY NOTES

- 1 PROVIDE AND INSTALL STANDARD DUTY ASPHALT PAVEMENT. SEE DETAIL ON SHEET C-800.
- 2 PROVIDE AND INSTALL 4" CONCRETE SIDEWALK PAVEMENT. SEE DETAIL ON SHEET C-800.
- 3 PROVIDE AND INSTALL 8" CONCRETE PAVEMENT. SEE DETAIL ON SHEET C-800.
- 4 OVERLAY MILLED PARKING LOT WITH STANDARD DUTY ASPHALT PAVEMENT. SEE DETAIL ON SHEET C-800.
- 5 UTILITY TRENCH PAVEMENT RESTORATION PER CITY OF DETROIT STANDARD DETAILS. SEE SHEET C-800.
- 6 PROVIDE AND INSTALL LOOSE STONE AGGREGATE. REFER TO LANDSCAPE PLAN FOR DETAILS.
- 7 PROVIDE AND INSTALL SPECIALTY PAVEMENT. REFER TO LANDSCAPE PLAN FOR DETAILS.
- 8 PROVIDE AND INSTALL FINE CRUSHED GRANITE. REFER TO LANDSCAPE PLAN FOR DETAILS.
- 9 PROVIDE AND INSTALL 8" CONCRETE APPROACH PER CITY OF DETROIT STANDARDS. SEE DETAIL SHEET C-801
- 10 DUMPSTER PAD LOCATION.
- 11 PROVIDE AND INSTALL 4" CONCRETE WITH EXPOSED AGGREGATE FINISH. SEE LANDSCAPE ARCHITECTURE FOR DETAIL
- 12 PROVIDE AND INSTALL 6" CONCRETE PAVEMENT. SEE DETAIL ON SHEET C-800.
- 13 PROVIDE AND INSTALL CURB BEHIND WALK IN ACCORDANCE WITH GRADING PLAN
- 14 PROVIDE AND INSTALL PAVEMENT STRIPPING. SEE DETAIL SHEET C800.
- 15 REMOVE AND REPLACE ALLEY APPROACH IN ACCORDANCE WITH CITY OF DETROIT STANDARDS. SEE DETAIL ON SHEET C800
- 16 PROVIDE AND INSTALL 6" SCREENWALL. SEE LANDSCAPE ARCHITECTURE PLAN FOR DETAILS.
- 17 DUMPSTER PROVIDED BY ODM VENDOR.
- 18 REMOVE AND REPLACE CURB IN ACCORDANCE WITH CITY OF DETROIT STANDARDS. SEE DETAIL ON SHEET C800.
- 19 PROVIDE AND INSTALL 6" ORNAMENTAL ALUMINUM FENCE AND GATE. SEE LANDSCAPE ARCHITECTURE PLAN FOR DETAILS.
- 20 PROVIDE AND INSTALL CONCRETE COLLAR FOR CATCH BASIN.
- 21 PROVIDE AND INSTALL PEDESTRIAN LIGHT POLE. SEE SITE ELECTRICAL DRAWINGS FOR DETAILS.
- 22 PROVIDE AND INSTALL 4" ORNAMENTAL ALUMINUM FENCE. SEE LANDSCAPE ARCHITECTURE PLAN FOR DETAILS.
- 23 LOCATION OF ADA LIFT STATIONS. SEE ARCHITECTURAL PLANS FOR DETAILS
- 24 PROVIDE AND INSTALL 6" ORNAMENTAL ALUMINUM FENCE. SEE LANDSCAPE ARCHITECTURE PLAN FOR DETAILS.
- 25 PROVIDE AND INSTALL 24" WIDE ORNAMENTAL SLIDING GATE. ELITE FENCE, ALUMINUM CANTILEVER GATE
- 26 PROVIDE AND INSTALL GATE OPERATING EQUIPMENT & CARD READER. LIFT MASTER SL595 & RFID READER. SEE SUPPLEMENTAL INFORMATION ATTACHED

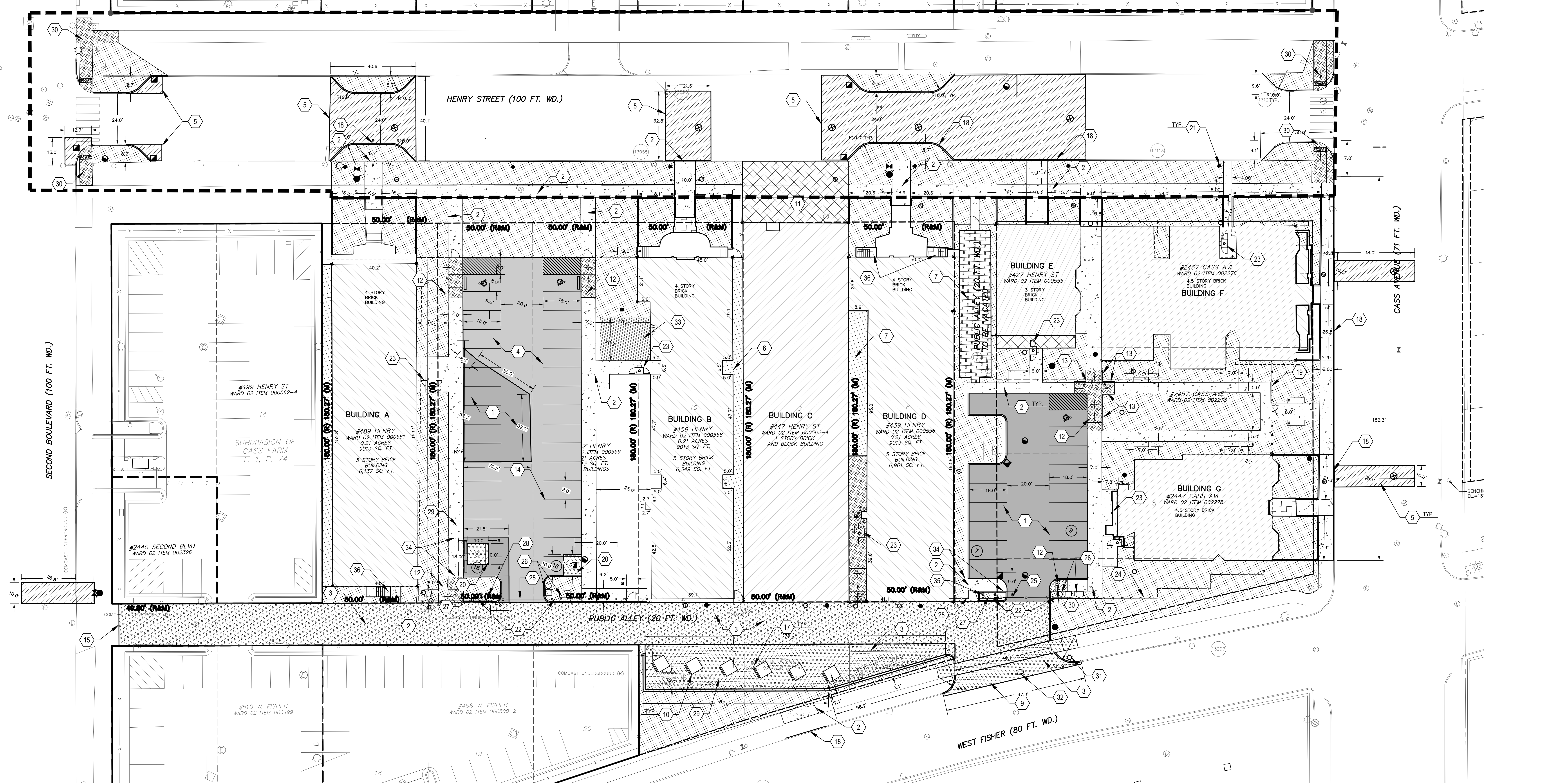
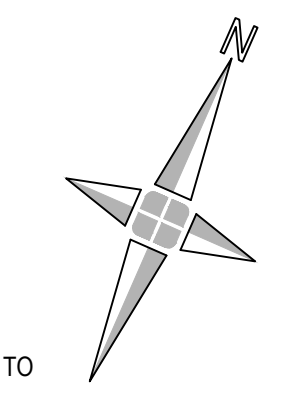
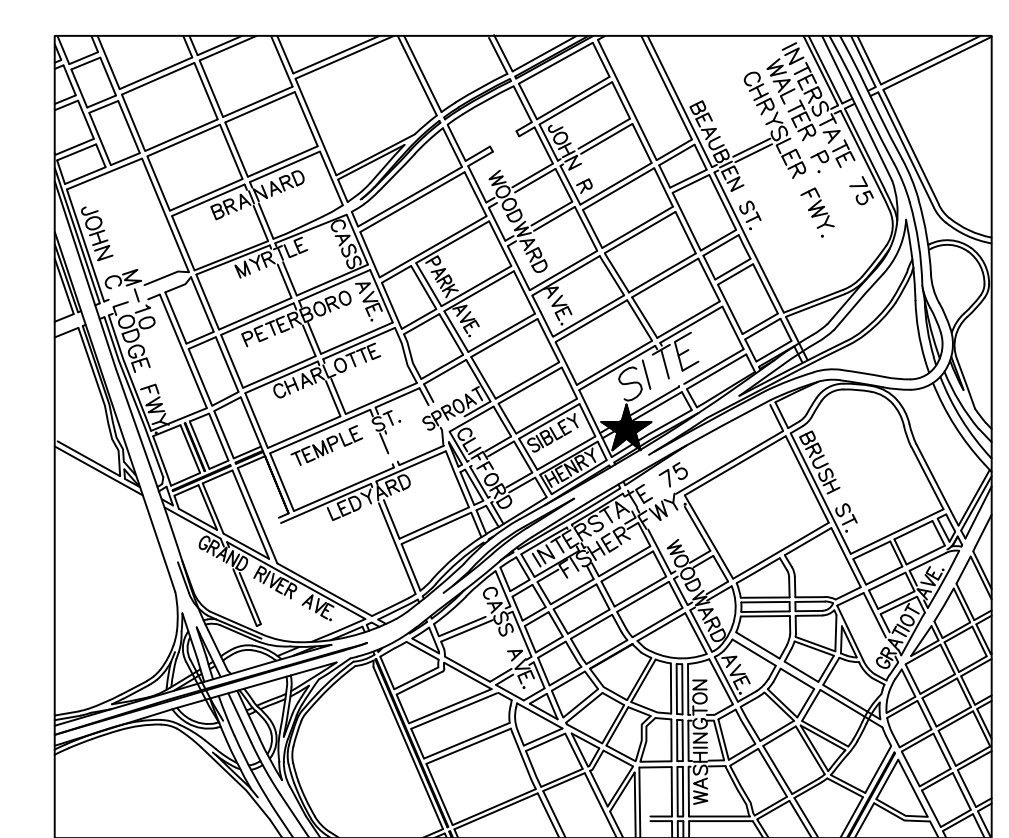
GEOMETRIC AND PAVING - NOTES

- 1. SEE SHEET C100 FOR GENERAL NOTES

CONTAMINATED SITE SOIL REMEDIATION NOTES

REFER TO THE SOIL MANAGEMENT PLAN FOR THE HENRY STREET REDEVELOPMENT FOR FURTHER INFORMATION ON CONTAMINATED SOIL MANAGEMENT AND DISPOSAL REQUIREMENTS, AND HEALTH AND SAFETY CONSIDERATIONS.

TOGETHER THE 8 INCHES OF CLEAN SOIL AND 4 INCHES OF CLEAN TOPSOIL CONSTITUTE AN EXPOSURE BARRIER TO PREVENT CONTACT WITH THE PRE-EXISTING SITE SOIL. BELOW ALL EXCAVATION THAT OCCURS AFTER THE 8 INCHES OF CLEAN IS PLACED MUST BE CONDUCTED SO AS NOT TO PENETRATE THE CLEAN SOIL. IF DEEPER EXCAVATION IS REQUIRED, ALL PRE-EXISTING SITE SOIL ALONG WITH THE BOTTOM 2 INCHES OF CLEAN SOIL, MUST BE SEGREGATED FROM CONTACT WITH CLEAN SOIL AND TOPSOIL DISPOSED AT A LICENSED LANDFILL. FOR EXCAVATION AFTER THE CLEAN SOIL IS PLACED, 6-MIL VISQUEEN OR SIMILAR MUST BE PLACED DIRECTLY NEXT TO THE EXCAVATION. EXCAVATED SOIL MAY BE STOCKPILED ON THE VISQUEEN OR LOADED DIRECTLY INTO CONTAINERS OR TRUCKS. IF ANY PRE-EXISTING SITE SOIL PLUS THE UPPER 2 INCHES OF CLEAN SOIL OR TOPSOIL, MUST BE REMOVED AND DISPOSED.



Engineers
Surveyors
Planners
Landscape Architects

28 West Adams Road
Suite 1200
Detroit, MI 48226
p (313) 962-4442
f (313) 962-5068
www.giffelswebster.com

Executive: MM
Manager: DR
Designer: JG
Quality Control: LE



DATE	ISSUE
04-28-2023	PERMIT REVISIONS
12-21-2022	ISSUED FOR BID
12-07-2022	ISSUED FOR PERMIT

Developed For:
Olympia Development of Michigan, L.L.C
2211 Woodward
Detroit, MI 48226

Client Phone
Client Fax

GEOMETRIC & PAVING PLAN ROW IMPROVEMENTS

Henry Street
Redevelopment

City of Detroit
Wayne County
MICHIGAN

Date: 11.04.2020
Scale: 1"=20'
Sheet: C-500
Project: 18275-147D

V:\18275-147D Cass Village Apartments - Task Order - 9\Design\CAD\Work\Sheet\Permit Sub\ROW Improvements\C-500 Geometric & Paving Plan.dwg