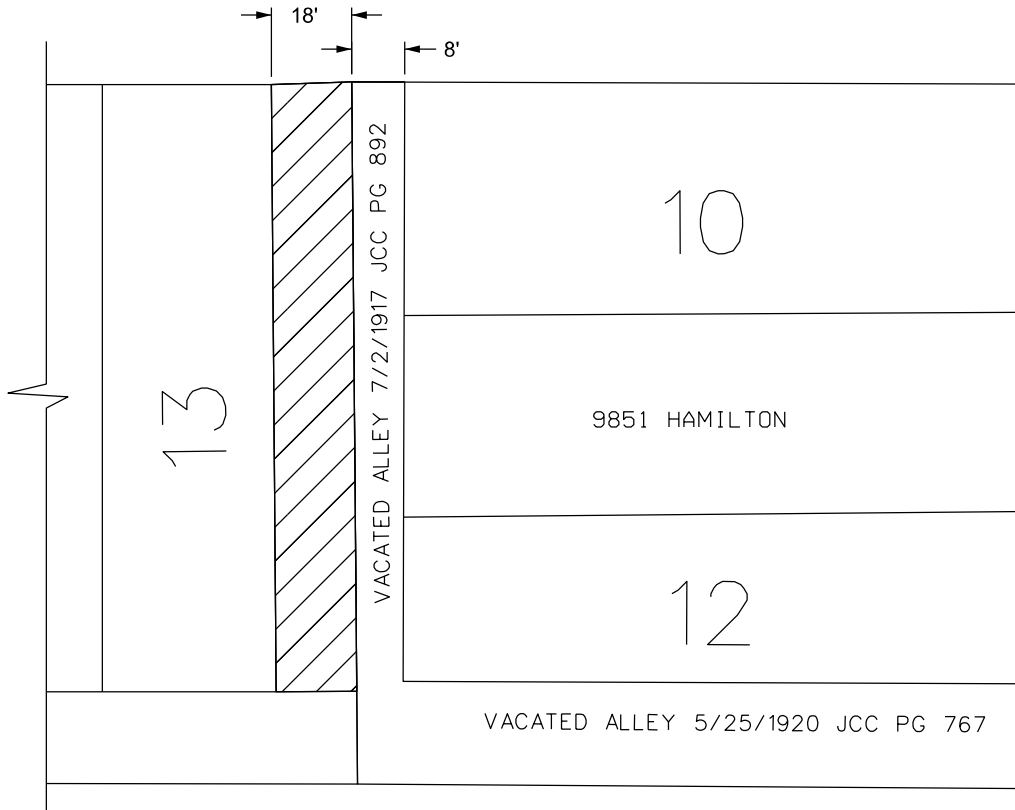


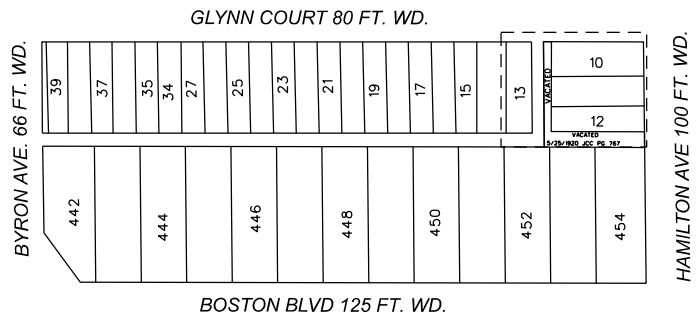


GLYNN COURT 80 FT. WD.

BYRON AVE. 66 FT. WD.



HAMILTON AVE. 100 FT. WD.



 - REQUEST VACATION WITH RESERVE OF A PUBLIC UTILITY AND PUBLIC ACCESS EASEMENT

(FOR OFFICE USE ONLY)

CARTO 32 C

B						REQUEST VACATION WITH EASEMENT OF THE ALLEY BOUNDED BY HAMILTON AVE. 100 FT. WD., GLYNN CT. 80 FT. WD., BYRON AVE. 66 FT. WD. AND BOSTON BLVD. 125 FT. WD.	CITY OF DETROIT CITY ENGINEERING DIVISION SURVEY BUREAU	
	A						JOB NO. 23-83	DRWG. NO.
DESCRIPTION		DRWN	CHKD	APPD	DATE			
DRAWN BY		CHECKED		APPROVED				
DATE								
08-15-2023		LC		AP		JD		