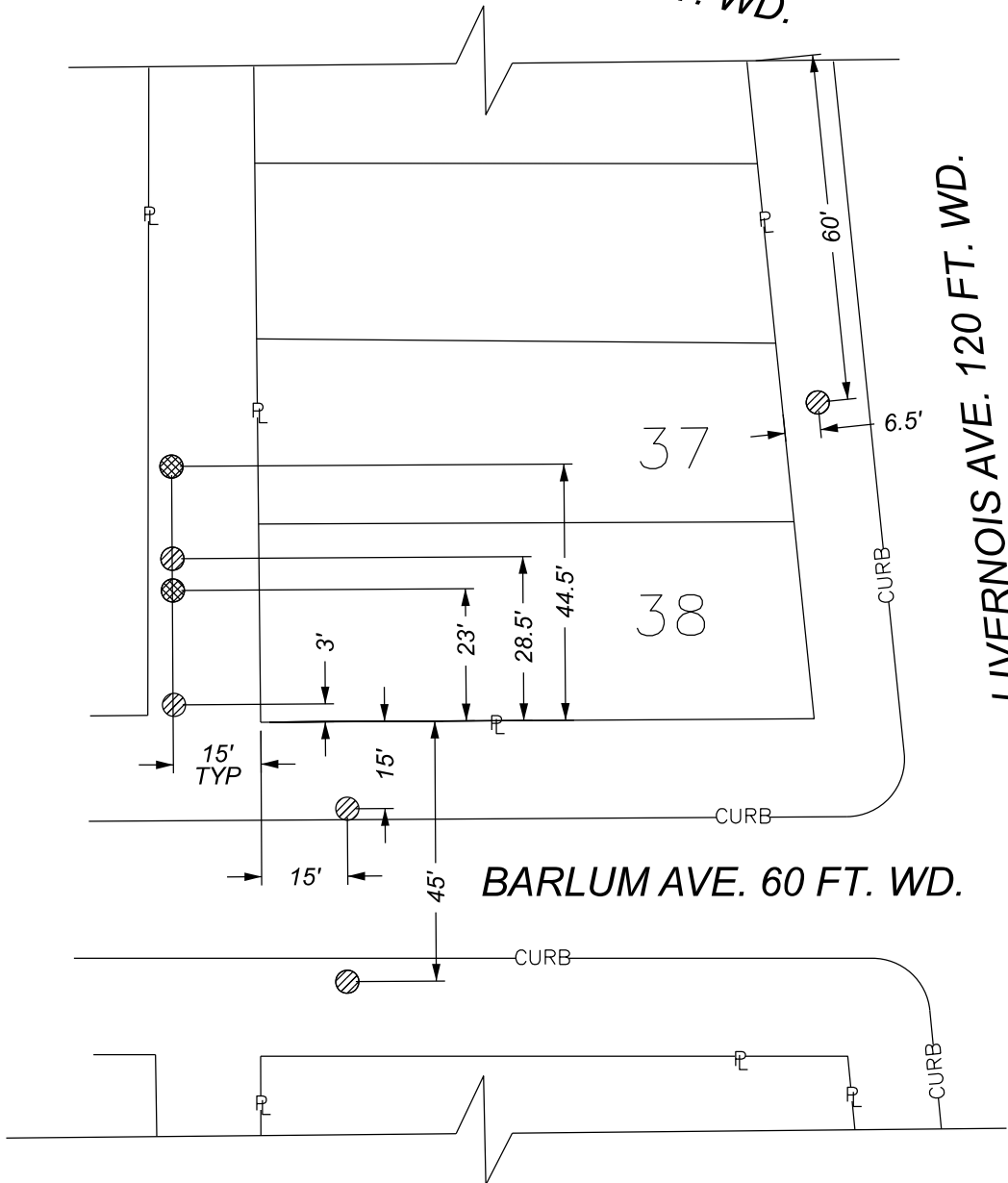




WEST WARREN AVE. 100 FT. WD.



LIVERNOIS AVE. 120 FT. WD.

BARLUM AVE. 60 FT. WD.

- ⊗ - PROPOSED SOIL GAS WELL FROM 0'-5' BELOW GRADE
- ⊘ - PROPOSED MONITORING WELL FROM 0'-8' BELOW GRADE
- - REQUEST BELOW GRADE ENCROACHMENT

(FOR OFFICE USE ONLY)

CARTO 14 15 E

<b>B</b>					
<b>A</b>					
<b>DESCRIPTION</b>	<b>DRWN</b>	<b>CHKD</b>	<b>APPD</b>	<b>DATE</b>	
<b>REVISIONS</b>					
<b>DRAWN BY</b>	<b>LC</b>	<b>CHECKED</b>	<b>AP</b>		
<b>DATE</b>	<b>09-06-2023</b>	<b>APPROVED</b>	<b>JD</b>		

REQUEST ENCROACHMENT FOR BELOW GRADE SOIL GAS POINTS AND MONITORING WELLS IN THE ALLEYWAY WEST OF LIVERNOIS AVE., ON THE NORTH SIDE OF BARLUM ST., AND ON THE WEST SIDE OF LIVERNOIS AVE.

<b>CITY OF DETROIT</b>	
CITY ENGINEERING DIVISION	
SURVEY BUREAU	
<b>JOB NO.</b>	23-81
<b>DRWG. NO.</b>	