

Janice M. Winfrey
City Clerk

City of Detroit
OFFICE OF THE CITY CLERK

Andre P. Gilbert II
Deputy City Clerk

DEPARTMENT PETITION REFERENCE COMMUNICATION

To: The Department or Commission Listed Below

From: Janice M Winfrey, Detroit City Clerk

The following petition is herewith referred to you for report and recommendation to the City Council.

In accordance with that body's directive, kindly return the same with your report in duplicate within four (4) weeks.

Petition No.	2023-343
Name of Petitioner	Detroit Athletic Club
Description of Petition	Petition for the vacation, with reserve of a public utility easement, of part of John R Road, lying westerly of and adjacent to the parcel commonly known as 241 Madison Street.
Type of Petition	Alley Vacation/Encroachment/Utility Vacation
Submission Date	10/10/2023
Concerned Departments	Department of Public Works (DPW), Planning and Development Department, Department of Public Lighting, City Engineering Division
Petitioner Contact	Jered Dean Manager II Department of Public Works City Engineering Division (313) 224-3985 deanj@detroitmi.gov



**CITY OF DETROIT
DEPARTMENT OF PUBLIC WORKS
CITY ENGINEERING DIVISION**

**COLEMAN A. YOUNG MUNICIPAL CENTER
2 WOODWARD AVE. SUITE 601
DETROIT, MICHIGAN 48226
PHONE: (313) 224-3949 TTY: 711
WWW.DETROITMI.GOV**

To: Clerk's Office
From: The Department of Public Works
City Engineering Division
MapsandRecordsBureau@DetroitMI.Gov
(313) 224-3970

Petitioner:
Detroit Athletic Club
241 Madison Street
Detroit, MI, 48226

On behalf of the above-mentioned petitioner the Department of Public Works: City Engineering Division is submitting a petition request for the below mentioned action. The petitioner has received a project consultation from the Department of Public Works: City Engineering Division and has been advised the following:

Type of action recommended:

Petition for the vacation, with reserve of a public utility easement, of part of John R Road, lying westerly of and adjacent to the parcel commonly known as 241 Madison Street.

Jered Dean
Manager II
Department of Public Works
City Engineering Division
313-224-3985



August 29, 2023

Honorable Detroit City Council
C/o Detroit City Clerk
2 Woodward Avenue
200 Coleman A. Young Municipal Center
Detroit, Michigan 48226

RE: Giffels Webster – Request for a partial right-of-way vacation of John R, between Madison Ave. and E. Adams Avenue.

Giffels Webster, 28 W. Adams, Suite 1200, Detroit, Michigan 48226 on behalf of the Detroit Athletic Club, 241 Madison Detroit, Michigan, 48226, respectfully requests the following vacation of the public right-of-way:

- The partial vacation with the reservation of a public utility easement of the 60-foot-wide John R Street. This segment of the John R. right-of-way (variable width) is broken up into three segments that bends in the middle, the northern segment (60-foot-wide) aligned northwest/southeast, the middle (variable width) section adjacent to the previously out-right vacated Cross Street (60-foot-wide), and the southern segment (60-foot-wide) is aligned north/south. The vacation is more particularly described as:
 - 1) The northern section includes the vacation with reservation of utility easement of the northeastern 18ft of John R. (60-foot-wide)
 - 2) The middle section includes the vacation with reservation of utility easement of the eastern 18ft of John R. (variable width)
 - 3) The southern section includes the vacation with reservation of utility easement of the eastern 20ft of John R. (60-foot-wide)

It is the intent of the petitioner to leave the western portion of John R's curb, sidewalk, lighting, etc. in place along with 27ft - 30 ft. of the public roadway, only modifying the eastern portion of John R, realigning the curb, lighting, drainage, hydrant, etc. to conform to the new John R. public right of-way alignment. The portion of the proposed vacated John R. will be improved to allow expanded use of the petitioner to aid and support further upgrades to the DAC facilities all subject and in conformance with the public utility easement requirements.

Please refer to the attached sketch and draft schematic design construction plans for further clarification. Also attached are copies of letters of consent to this request from the abutting property owners Olympia Development of Michigan, LLC, 100E. Adams, Parcel 01000288-90, and 327 John R., Parcel 01004062-4 and Grand Valley State University, 163 Madison, Parcel 01000272-4.

If you should have any questions, please do not hesitate to contact me at (313) 980-1469 or at mmarks@giffelswebster.com.

Respectfully,

A handwritten signature in blue ink, appearing to read "Michael W. Marks".

Michael W. Marks P.E.,
Partner
Giffels Webster



GRAND VALLEY
STATE UNIVERSITY
OFFICE OF GENERAL
COUNSEL

July 24, 2023

Richard Doherty, P.E.
City Engineer
City of Detroit
Department of Public Works
Engineering Division
2 Woodward Avenue
Colman A. Young Municipal Building
Detroit, MI 48226

Mr. Doherty:

Grand Valley State University owns property in the City of Detroit at 163 Madison. A request has been made by the Detroit Athletic Club (via Giffels Webster), dated April 28, 2023, to partially vacate certain public rights-of-way which are adjacent to this property.

As a duly authorized agent of Grand Valley State University I have reviewed this request thoroughly. Grand Valley State University is in full support of the partial vacation of these rights-of-way, as outlined in the request.

If you should have any questions, please contact me at smithp@gvsu.edu.

Respectfully,



Patricia Smith, Esq.
General Counsel
Grand Valley State University



July 14, 2023

Richard Doherty, P.E.
City Engineer
City of Detroit
Department of Public Works
Engineering Division
2 Woodward Avenue
Colman A. Young Municipal Building
Detroit, MI 48226

Re: Partial Vacation of John R Street between Adams and Madison

Dear Mr. Doherty:

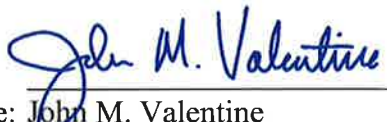
Olympia Development of Michigan, L.L.C. owns property in the City of Detroit at 100 E Adams and 327 John R Street. A request has been made by the Detroit Athletic Club (via Giffels Webster), dated April 28, 2023, to partially vacate certain public rights-of-way which are adjacent to these properties.

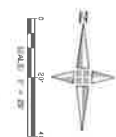
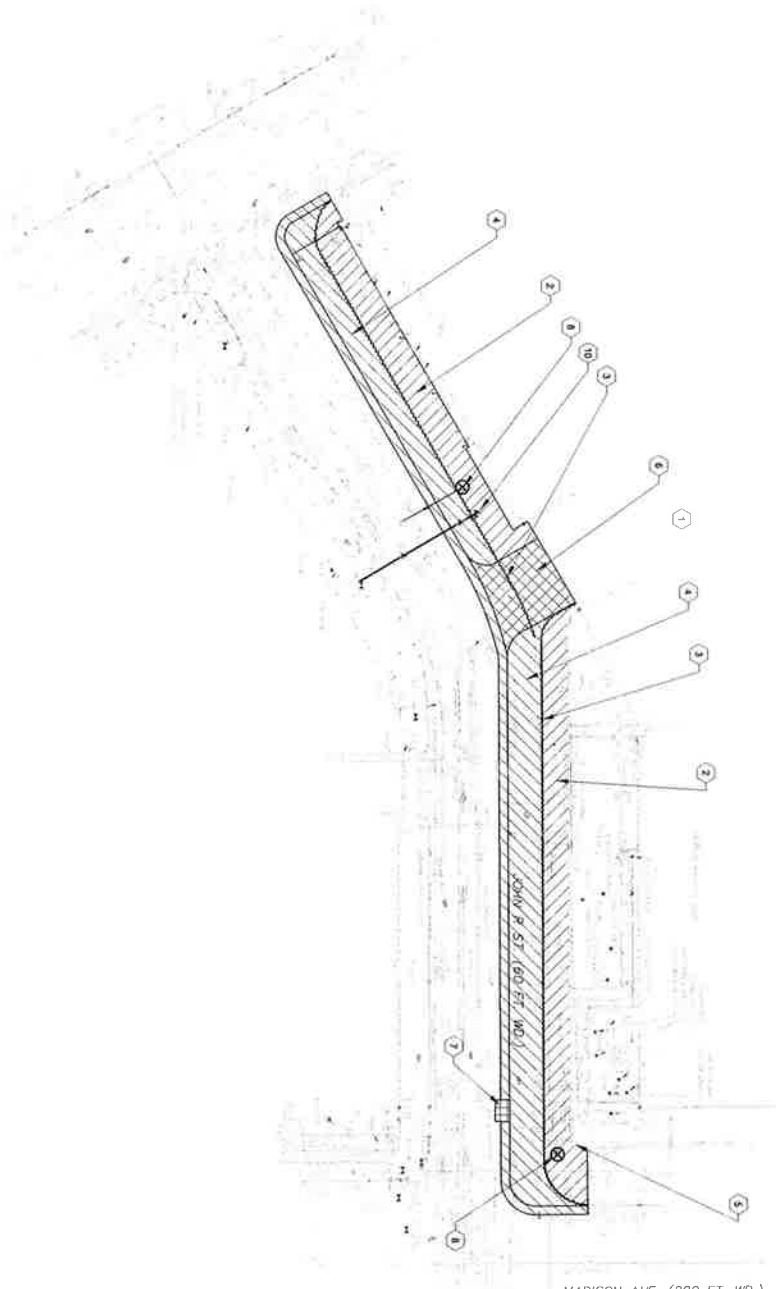
As a duly authorized agent of Olympia Development of Michigan, L.L.C. I have reviewed this request thoroughly. Olympia Development of Michigan, L.L.C. is in full support of the partial vacation of these rights-of-way, as outlined in the request.

If you should have any questions, please contact me at john.valentine@olydev.com

Very truly yours,

Olympia Development of Michigan, L.L.C.

By: 
Name: John M. Valentine
Title: Vice President, General Counsel



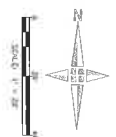
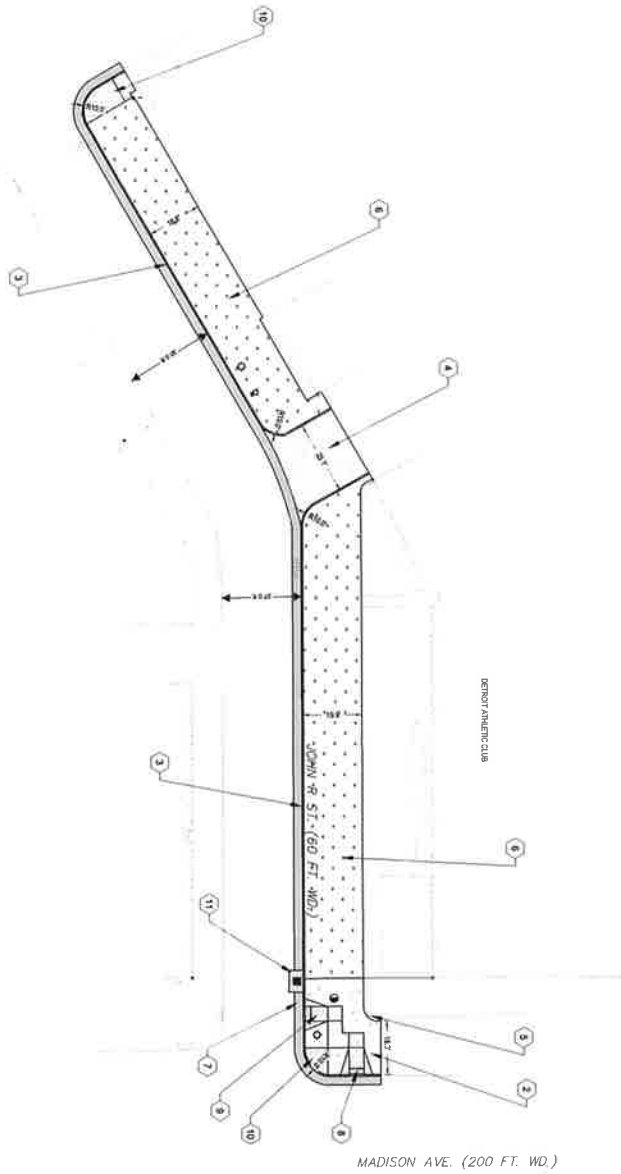
DEMOLITION PLAN - LEGEND

- REMOVE CONCRETE CURB AND GUTTER
- REMOVE FENCE
- REMOVE CONCRETE UTILITY STRUCTURE
- REMOVE TREE, SHRUB, OR TUO
- REMOVE EXISTING PAVEMENT
- REMOVE ASPHALT PAVEMENT
- REMOVE CONCRETE SIDEWALK
- REMOVE GRAVEL, SAND, GRAVEL, AND/OR OTHER
- REMOVE FULL DEPTH ASPHALT PAVEMENT

DEMOLITION PLAN - KEYNOTES

- 1 PROPERTY LINE, TYP.
- 2 REMOVE CONCRETE SIDEWALK PAVEMENT, TYP.
- 3 REMOVE AND DISPOSE OF CONCRETE CURB, TYP.
- 4 REMOVE ASPHALT PAVEMENT, TYP.
- 5 CURB TO REMAIN, TYP.
- 6 REMOVE EXISTING PAVEMENT
- 7 REMOVE FULL DEPTH ASPHALT PAVEMENT.
- 8 REMOVE SAND AND GRAVEL, TRAFFIC SIGNAL POLE FOR RELOCATION AND INSTALLATION.
- 9 REMOVE SAND AND GRAVEL, LOW POLE FOR RELOCATION AND INSTALLATION.
- 10 RELOCATE TRAFFIC SIGNAL TO BE NEAREST CURB FACE

<p>giffels webster</p> <p>Engineers Surveyors</p> <p>210 West Adams Road Suite 1000 Chicago, IL 60606 P: 312.462.4400 F: 312.462.4400 www.giffelswebster.com</p>	<p>811</p> <p>Know what's below. Call before you dig.</p>	<p>DEMOLITION PLAN</p> <p>DATE: 08/28/2023 SCALE: 1"=20' SHEET: 03/00 PROJECT: 18862 210</p> <p>DESIGNED BY: DAC John R. Street</p> <p>DRAWN BY: [Name] CHECKED BY: [Name] DATE: 08/28/2023</p>
---	--	--



PAVING PLAN - LEGEND

- 1" CONCRETE SERRAVALLE PAVEMENT
- 4" CONCRETE SERRAVALLE PAVEMENT
- 8" CONCRETE SERRAVALLE PAVEMENT
- PAVEMENT REPAIR PER CITY OF DETROIT STANDARDS AND SPECIFICATIONS
- ASPHALT PAVEMENT REPAIR
- PROPOSED GRASS
- CONCRETE SERRAVALLE PAVEMENT

PAVING PLAN - KEY NOTES

- 1 PROPOSED LINE
- 2 NEW 4" CONCRETE SERRAVALLE PAVEMENT, TYPE SEE DETAIL ON SHEET C-500
- 3 NEW 8" CURB, SEE DETAIL ON SHEET C-500
- 4 NEW 4" CONCRETE DRIVEWAY PAVEMENT, SEE DETAIL ON SHEET C-500
- 5 EXISTING CURB TO REMAIN
- 6 PROPOSED LANDSCAPE TYPE
- 7 ASPHALT PAVEMENT REPAIR, 3/4" WIDE BAY, PER CITY OF DETROIT STANDARDS AND SPECIFICATIONS. PAVEMENT SHALL BE LAYED AND BURNED TO NEW CENTER GRADE PER SIDEWALK FACE OF CURB.
- 8 REPAIR TO EXISTING ASPHALT PAVEMENT PER CITY OF DETROIT STANDARDS AND SPECIFICATIONS.
- 9 NEW 4" CONCRETE SERRAVALLE PAVEMENT, TYPE SEE DETAIL ON SHEET C-500
- 10 4" CONCRETE SERRAVALLE PAVEMENT, TYPE SEE DETAIL ON SHEET C-500
- 11 8" CONCRETE SERRAVALLE PAVEMENT, TYPE SEE DETAIL ON SHEET C-500

giffels webster
 Engineers
 Surveyors
 Planners
 Landscape Architects

28 West Adams Road
 Suite 1000
 Detroit, MI 48226
 P 313.963.6442
 F 313.963.6444
 www.giffelswebster.com



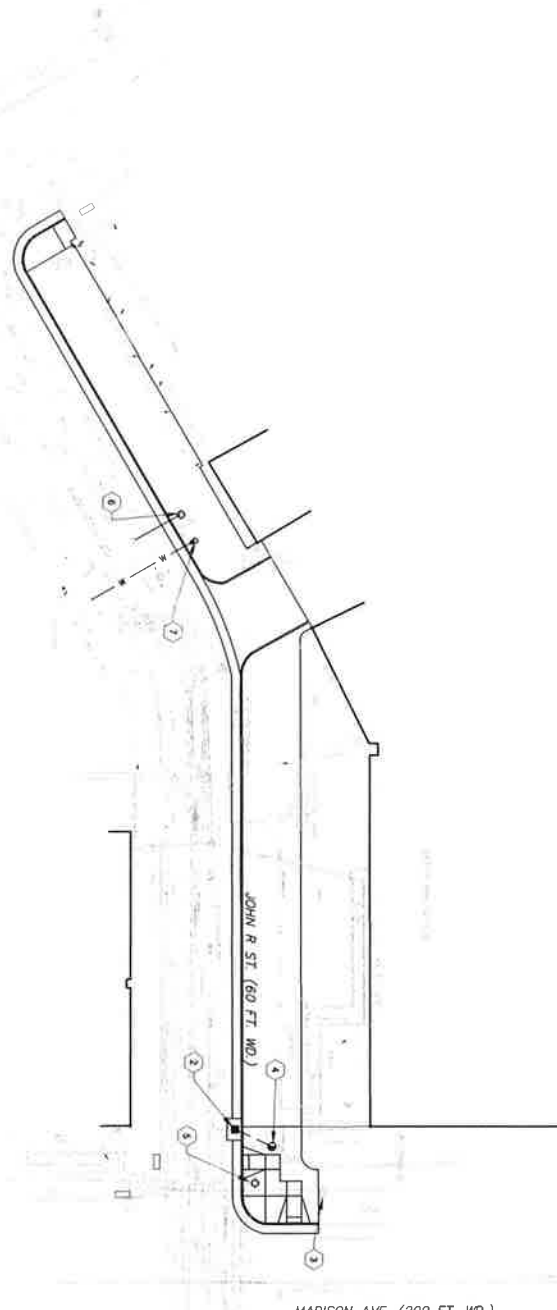
NO.	DATE	BY	REVISION

Client:
 Detroit Athletic Club
 301 Madison
 Detroit, Michigan 48226
 P 313.442.1048

Project:
 GEOMETRIC & PAVING PLAN
 DAC John R. Shiel

Design:
 Date: 05-22-2023
 Scale: C-500
 Project: 1565-C-500

© 2023 Giffels Webster LLC
 All rights reserved.
 This drawing is the property of Giffels Webster LLC.



UTILITY PLAN - LEGEND

- STORM SEWER
- SEWER
- WATER SERVICE
- UNDERGROUND ELECTRIC
- GAS SERVICE
- COMMUNICATIONS
- FIRE HYDRANT
- STOP VALVE AND VALVE
- PIPE REPAIRMENT CONNECTION
- CATCH BASIN
- STORM CLEANOUT
- SAWTOOTH MANHOLE
- STORM MANHOLE
- STORM SEWER CLEANOUT
- UNDERGROUND EXTENSION SYSTEM

UTILITY PLAN - KEY NOTES

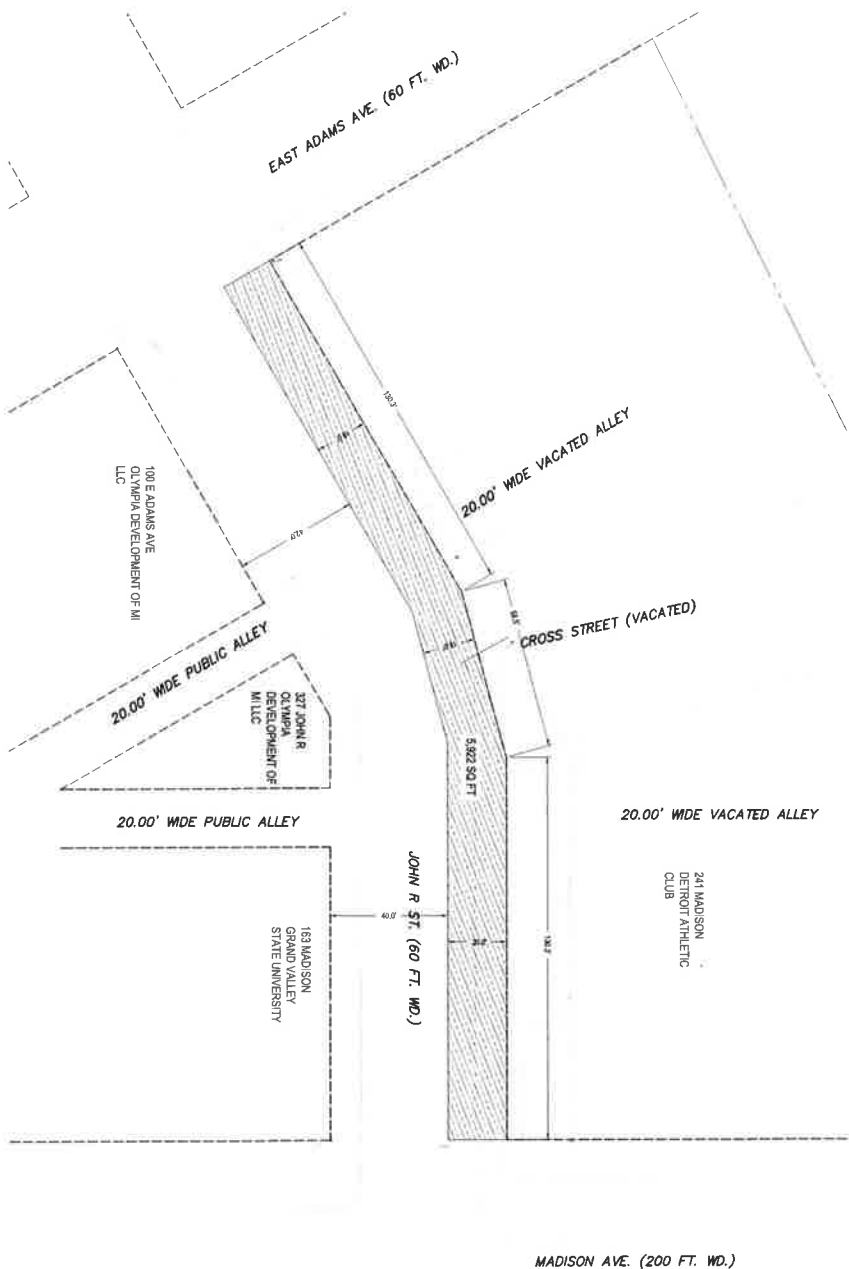
- 1 EXISTING SERVICE OR NEW
- 2 PROPOSED NEW UTILITY INSTALLATION, SANITARY OR SEWER STANDARDS AND SPECIFICATIONS
- 3 PROTECT LIGHT POLE THROUGHOUT CONSTRUCTION
- 4 CONVERT EXISTING BASIN TO SANITARY, INSTALL MANHOLE COVER
- 5 RELOCATE TRAFFIC SIGNAL POLE
- 6 RELOCATE LIGHT POLE
- 7 RELOCATE FIRE HYDRANT

<p>giffels webster</p> <p>Engineers Surveyors Planners Landscape Architects</p> <p>20 West Laurel Road Suite 1000 Chico, IL 62926 P (313) 862-4400 F (313) 862-6566 www.giffelswebster.com</p>	<p>811 Missouri's Non-Emergency Call Before You Dig</p>	<p>Drawn by: David Athletic Club 241 Madison Oxford, Michigan 48365 P 313 442 1948</p>	<p>UTILITY PLAN</p> <p>DAC John R. Smart</p>	<p>Client: City of Detroit Wayne County Michigan</p> <p>DATE: 06.26.2023 SCALE: 1"=20' SHEET: C-100 PROJECT: 15666110</p>
---	---	--	---	---



VACATION OF JOHN R RIGHT-OF-WAY WITH A RESERVATION OF A PUBLIC UTILITY EASEMENT

A PART OF JOHN R. STREET (60 FEET WIDE) WITHIN THE GOVERNOR AND JUDGES PLAN OF SECTION 11 OF THE CITY OF DETROIT, AS RECORDED IN UBER 34, PAGE 554 OF DEEDS, WAYNE COUNTY RECORDS, BEING MORE PARTICULARLY DESCRIBED AS: BEGINNING AT THE INTERSECTION OF THE SOUTH LINE OF MADISON AVENUE (200 FEET WIDE) WITH THE EAST LINE OF JOHN R. STREET (60 FEET WIDE), BEING ALSO THE SOUTHWEST CORNER OF LOT 28 OF SAID GOVERNOR AND JUDGES PLAN SECTION 11; THENCE S88°57'54" W, 20.00 FEET ALONG SAID NORTH LINE OF MADISON AVENUE; THENCE N01°02'06" W, 135.40 FEET; THENCE N16°00'40" W, 46.08 FEET; THENCE N30°58'57" W, 127.92 FEET TO A POINT ON THE SOUTH LINE OF ADAMS AVENUE (60 FEET WIDE); THENCE N59°01'03" E, 18.00 FEET ALONG SAID SOUTH LINE OF ADAMS AVENUE TO A POINT ON THE EAST LINE OF SAID JOHN R STREET (60 FEET WIDE), SAID POINT ALSO BEING THE NORTHWEST CORNER OF LOT 15 OF SAID GOVERNOR AND JUDGES PLAN SECTION 11; THENCE THE FOLLOWING THREE (3) COURSES ALONG SAID EAST LINE OF JOHN R. STREET: 1) S30°58'57" E, 130.29 FEET, AND 2) S16°00'40" E, 58.55 FEET, AND 3) S01°02'06" E, 130.29 FEET TO THE POINT OF BEGINNING AND CONTAINING 0.136 ACRES.



MADISON AVE. (200 FT. WD.)

giffels
webster

Engineers
Surveyors
Planners
Landscape Architects

28 Wood Avenue Road
Suite 1205
Detroit, MI 48226
P: (313) 862-8442
F: (313) 862-8888
www.giffelswebster.com

Prepared For:

Client	DETROIT ATHLETIC CLUB
Project	STREET VACATION
Drawn	MM
Checked	MM
Designed	MM
Quality Control	MM
Scale	PROJECT CLARITY



Submitted To:

Organization	DETROIT ATHLETIC CLUB
Address	241 Madison Detroit, Michigan 48226 (313) 442-1048

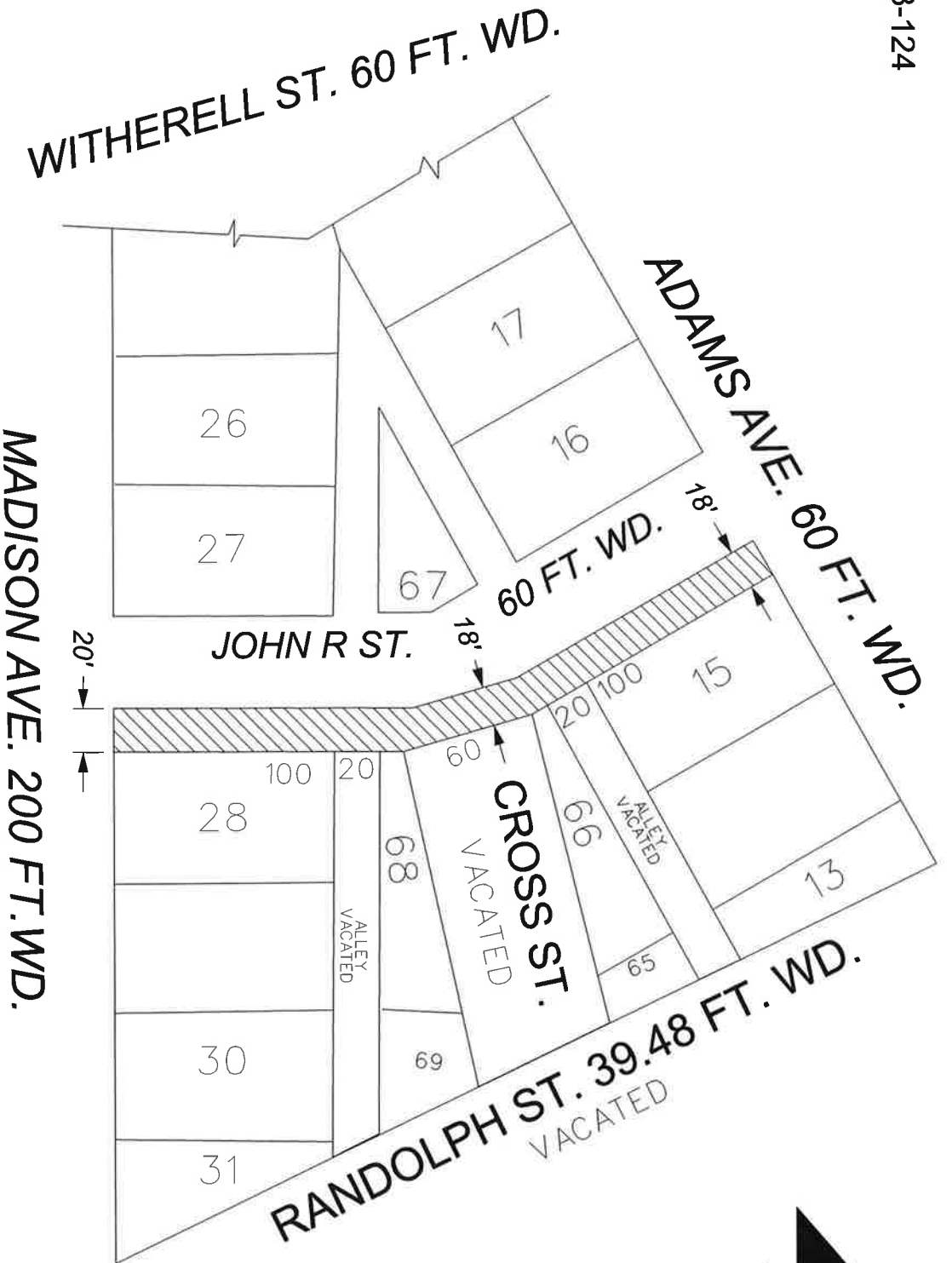
**RIGHT-OF-WAY
MODIFICATIONS**

JOHN R.

City of Detroit
Wayne County
Approved

Date: 08/25/2023

Scale	1"=50'
Sheet	C18
Project	15288-D10



- REQUEST PARTIAL VACATION WITH UTILITY EASEMENT

(FOR OFFICE USE ONLY)

CARTO 28 A

B					
A					
DESCRIPTION		DRWN	CHKD	APPD	DATE
REVISIONS					
DRAWN BY	LC	CHECKED	AP		
DATE	08-31-2023	APPROVED	JD		

REQUEST PARTIAL VACATION OF
 JOHN R. ST. BETWEEN
 MADISON AVE. AND E. ADAMS AVE.
 WITH RESERVE OF UTILITY EASEMENT

CITY OF DETROIT CITY ENGINEERING DIVISION SURVEY BUREAU	
JOB NO.	23-124
DRWG. NO.	