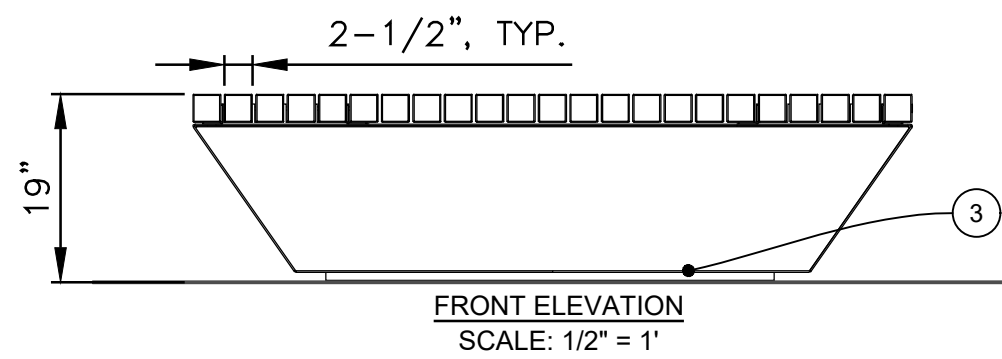
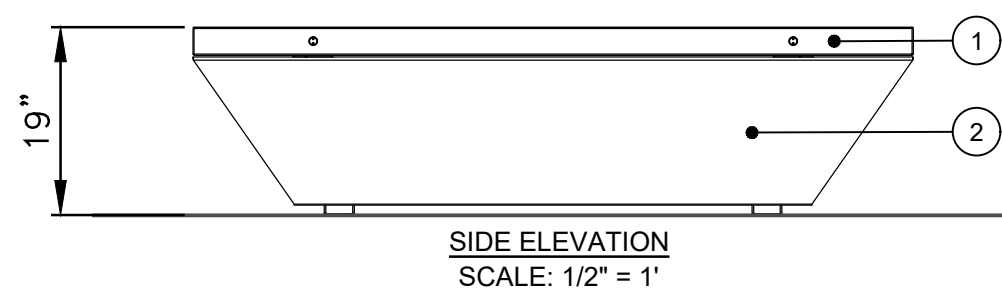
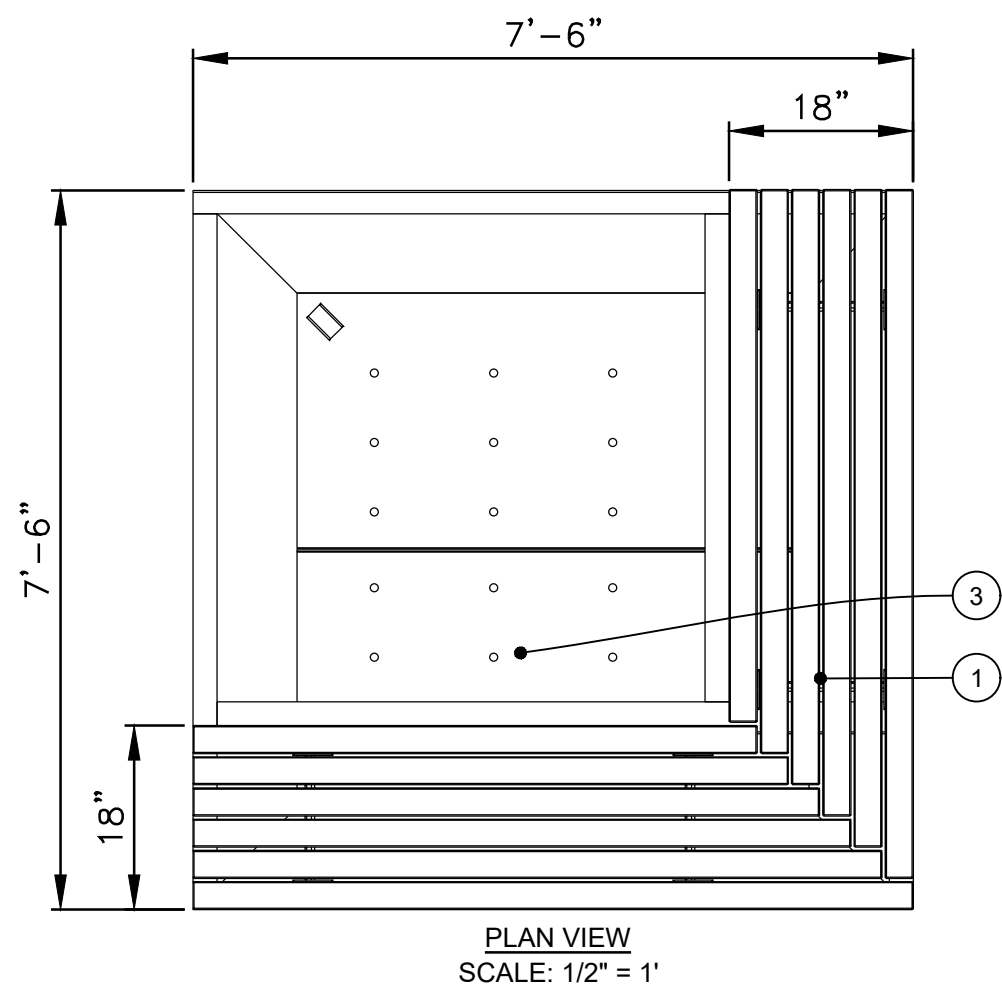


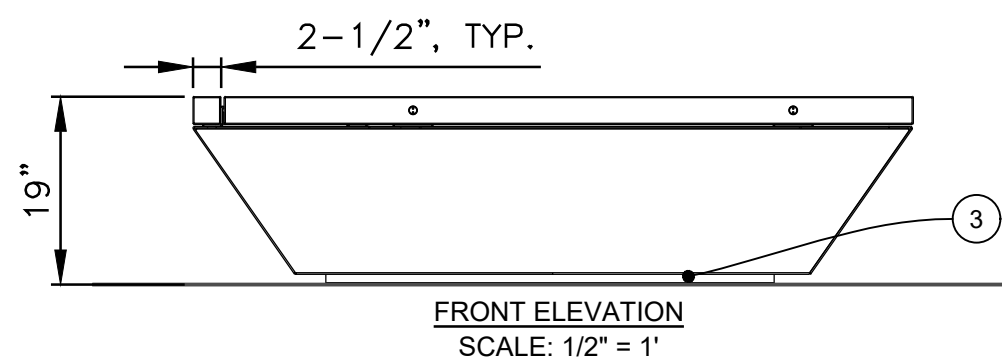
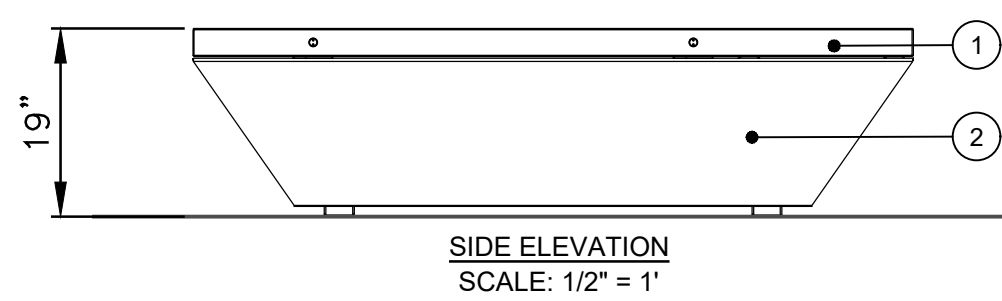
- ① PODIUM SEATING SURFACE, UNTREATED FSC 100% CUMARU HARDWOOD
- ② CORTEN STEEL, CLASS A, 4MM THICK
- ③ CLOSED BOTTOM /DRAINAGE HOLES



WOOD/STEEL PODIUM SEATING DETAIL
SCALE: AS NOTED



- ① PODIUM SEATING SURFACE, UNTREATED FSC 100% CUMARU HARDWOOD
- ② CORTEN STEEL, CLASS A, 4MM THICK
- ③ CLOSED BOTTOM /DRAINAGE HOLES



"L" SHAPED BENCH/PLANTER DETAIL
SCALE: AS NOTED

PLANT LIST

Perennials/Ornamental Grasses

SYMB.	QTY.	BOTANICAL NAME	COMMON NAME	SIZE	SPACING	COMMENTS
Ic	36	<i>Imperata cylindrica</i> 'Red Baron'	Japanese Blood Grass	1 gal.	24" o.c.	
Hh	20	<i>Hemerocallis</i> 'Happy Returns'	Happy Returns Daylily	1 gal.	30" o.c.	mix randomly with Hs
Hs	20	<i>Hemerocallis</i> 'Stella D'Oro'	Stella D'Oro Daylily	1 gal.	30" o.c.	mix randomly with Hh
Sm	68	<i>Salvia sylvestris</i> 'May Night'	May Night Salvia	1 gal.	24" o.c.	
Ss	12	<i>Sciaochyrium scoparium</i> 'The Blues'	Little Bluestem	1 gal.	24" o.c.	

Shrubs

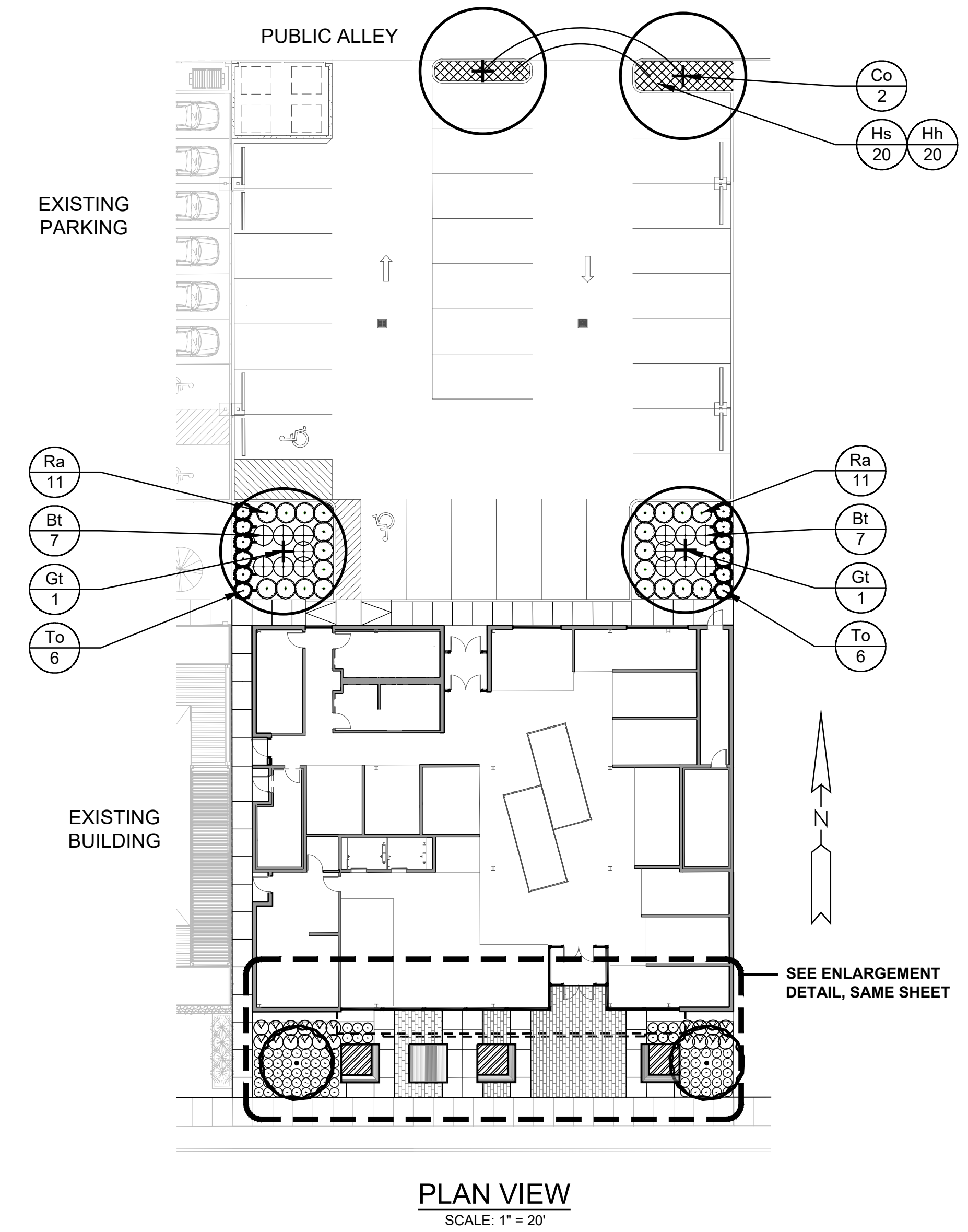
SYMB.	QTY.	BOTANICAL NAME	COMMON NAME	SIZE	SPACING	COMMENTS
Bt	14	<i>Berberis thunbergii</i> 'Atropurpurea'	Red Barberry	3 gal.	48" o.c.	
Mp	20	<i>Myrica pensylvanica</i>	Northern Bayberry	3 gal.	36" o.c.	
Ra	22	<i>Rhus aromatica</i> 'Grow Low'	Grow Low Fragrant Sumac	3 gal.	48" o.c.	
To	12	<i>Thuja occidentalis</i> 'Emerald'	Emerald Arborvitae	6' ht.	36" o.c.	

Trees

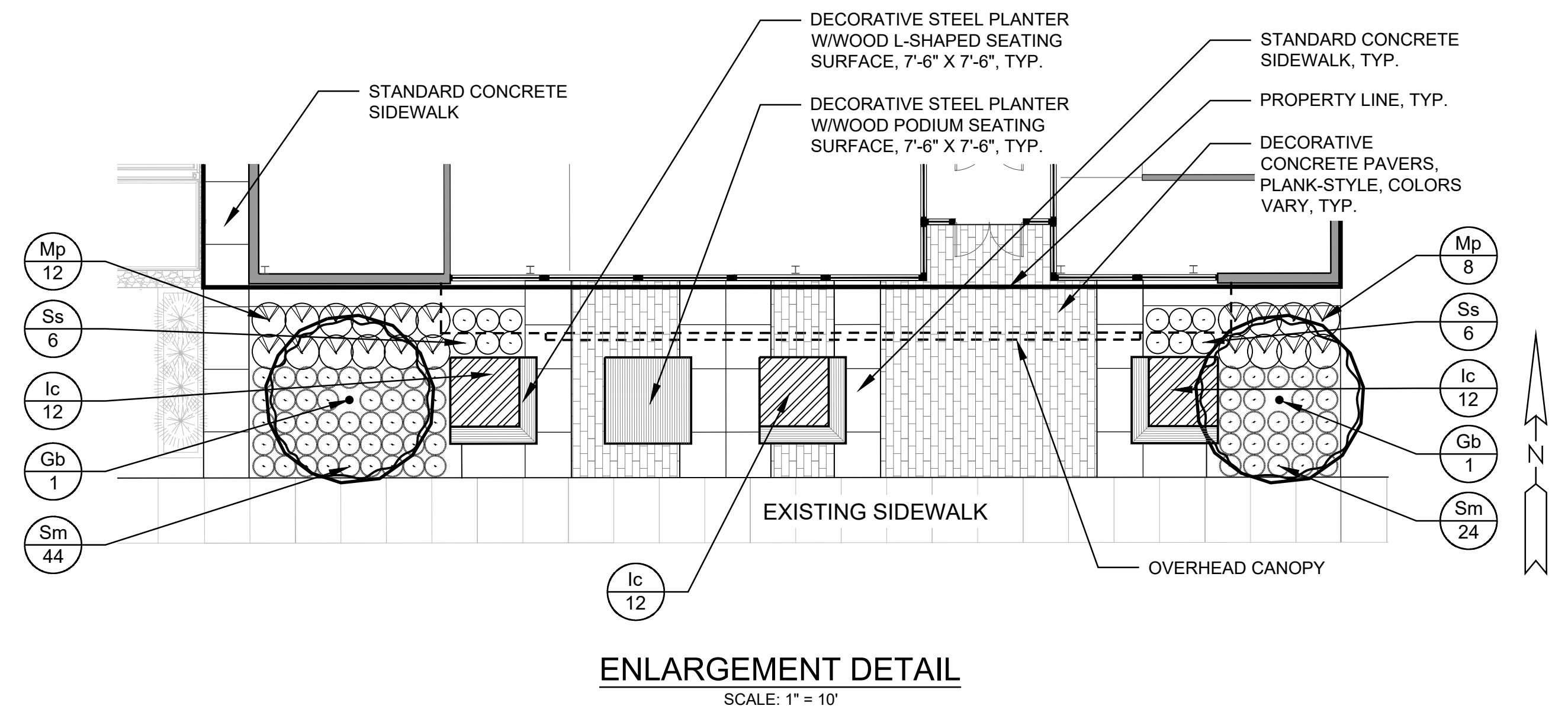
SYMB.	QTY.	BOTANICAL NAME	COMMON NAME	SIZE	SPACING	COMMENTS
Co	2	<i>Celtis occidentalis</i>	Common Hackberry	2-1/2" cal.	As Shown	B&B
Gb	2	<i>Ginkgo biloba</i> 'Princeton Sentry'	Princeton Sentry Maidenhair Tree	2" cal.	As Shown	B&B
Gt	2	<i>Gleditsia triacanthos inermis</i> 'Skyline'	Skyline Honey Locust	2-1/2" cal.	As Shown	B&B, thornless variety

LANDSCAPING NOTES:

- ALL PAVEMENT, UTILITIES, IRRIGATION, AND FINAL GRADING SHALL BE COMPLETED BY OTHERS AS SPECIFIED PRIOR TO INSTALLATION OF PLANTS
- ALL LANDSCAPE PLANTING BEDS SHALL BE IRRIGATED WITH AN AUTOMATED IRRIGATION SYSTEM THAT IS CONNECTED TO THE BUILDING WATER SUPPLY. IRRIGATION SYSTEM SHALL BE DESIGNED AND INSTALLED BY A CERTIFIED IRRIGATION PROFESSIONAL. CONTRACTOR SHALL SUBMIT IRRIGATION SHOP DRAWINGS/DESIGN FOR REVIEW AND APPROVAL PRIOR TO INSTALLATION.
- THE WARRANTY PERIOD AND REQUIREMENTS FOR ALL PLANT MATERIAL SUPPLIED BY THE CONTRACTOR SHALL CONFORM WITH THE SPECIFICATIONS AND/OR AS AGREED UPON IN THE CONTRACT PRIOR TO INSTALLATION OF ALL PLANTING MATERIALS.
- ALL PLANTS SHALL BE PLANTED AT THE SAME RELATIONSHIP TO FINISHED GRADE AS THE PLANTS ORIGINAL GRADE BEFORE DIGGING.
- THE BURLAP AND WIRE BASKETS FOR BALLED AND BURLAPPED MATERIAL SHALL BE REMOVED FROM THE TOP HALF OF THE ROOT BALL PRIOR TO FINISHING THE BACKFILLING OF THE PLANT PIT.
- SPACING OF PLANT MATERIALS SHALL BE AS SHOWN AND NOTED ON PLANS. THE LANDSCAPE ARCHITECT SHALL REVIEW THE PLACEMENT OF PLANT MATERIAL PRIOR TO INSTALLATION AND RESERVES THE RIGHT TO ADJUST PLANT LAYOUT AND SPACING TO ACCOMMODATE SITE CONDITIONS AND DESIGN INTENT IF NEEDED AFTER INSTALLATION.
- ALL PLANT MATERIAL SHALL CONFORM TO THE PLANT SCHEDULE. SIZES SHALL BE THE MINIMUM STATED ON THE PLANT LIST OR LARGER. ALL MEASUREMENTS SHALL BE IN ACCORDANCE WITH THE LATEST EDITION OF THE "AAN STANDARDS FOR NURSERY STOCK". ANY REQUEST FOR PLANT SUBSTITUTIONS FOR SIZE AND/OR SPECIES MUST BE SUBMITTED IN WRITING BY THE CONTRACTOR IN ACCORDANCE WITH THE CONTRACT DOCUMENTS
- ALL PLANT MATERIAL SHALL BE INSPECTED BY THE LANDSCAPE ARCHITECT UPON ARRIVAL. ANY PLANTS NOT ACCEPTABLE WILL BE REJECTED. IF FOR ANY REASON BALLED AND BURLAPPED MATERIALS, OR CONTAINER GROWN STOCK, NEED TO BE STORED ON SITE LONGER THAN A 24-HOUR PERIOD, THEIR ROOT BALLS SHALL BE PROTECTED AND HEALED-IN WITH SOIL AND MULCH IN A TRENCH. ALL PLANTS SHALL BE THOROUGHLY WATERED EACH DAY THEY ARE STORED ON SITE. ANY PLANTS ALLOWED TO DRY-OUT AS DETERMINED BY THE LANDSCAPE ARCHITECT WILL BE REJECTED.
- NO PLANT SHALL BE PUT INTO THE GROUND BEFORE ROUGH GRADING IS COMPLETED.
- ALL PLANTS AND STAKES SHALL BE SET PLUMB UNLESS OTHERWISE INDICATED ON THE PLANS AND SPECIFICATIONS. ALL GUYS AND STAKES MUST BE LOCATED WITHIN EACH TREES MULCHED BED TO ELIMINATE THE POSSIBILITY OF MOWER CONTACT AND TO REDUCE MAINTENANCE.
- ALL DAMAGE TO EXISTING GRASS, LANDSCAPE AREAS, OR PAVED AREAS CAUSED BY CONSTRUCTION AND PLANTING ACTIVITIES SHALL BE RESTORED TO ITS ORIGINAL CONDITION. THE COST OF REPAIRS AND RESTORATION SHALL BE THE RESPONSIBILITY OF THE CONTRACTOR.



PLAN VIEW
SCALE: 1" = 20'



ENLARGEMENT DETAIL
SCALE: 1" = 10'

REVISIONS:	DESIGN: ---	DRAWN: --	CHECKED: --
19-021DWG	19-021DWG	19-021DWG	19-021DWG
FIELD OK: net			

SCALE: as noted
DATE: 04-11-2022
JOB NO: 19-021
SHEET