

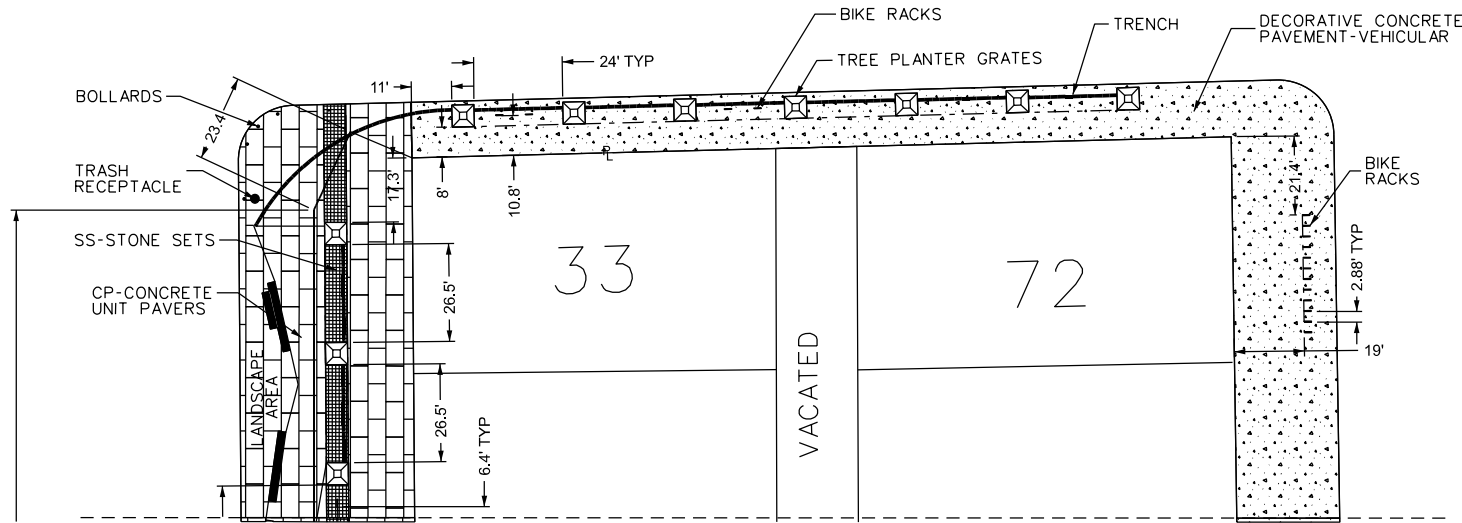
MAP-22-52

GRAND RIVER AVE. 60 FT. WD.



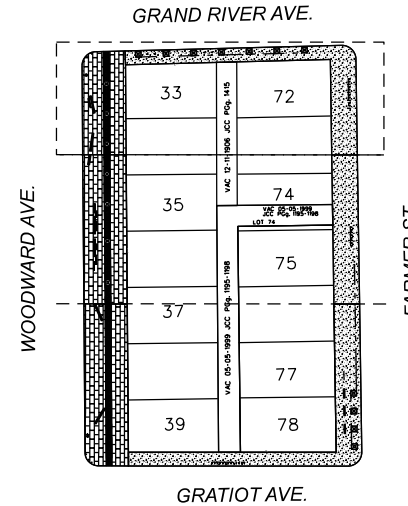
WOODWARD AVE. 120 FT. WD.

FARMER ST. 71 FT. WD.



- 2'-3' WIDE BY 3' DEEP TRENCH BETWEEN LANDSCAPE AREAS AND TREE GRATES FOR ELECTRICAL AND IRRIGATION CONDUIT
- 2' X 3.5' DEEP TRENCH FOR LANDSCAPE STORM DRAINAGE
- ☒ TREE PLANTER GRATE 6'X6'
- BOLLARD
- BIKE RACK 2'X2'10"X3"
- STONE BLOCK - VARIOUS SIZES
- TRASH RECEPTACLE
- ▨ DECORATIVE CONCRETE PAVEMENT-VEHICULAR
- ▨ CP-CONCRETE UNIT PAVERS
- ▨ SS-STONE SETS

- REQUEST ENCROACHMENT



CARTO 28 A

B					
A					
DESCRIPTION	DRWN	CHKD	APPD	DATE	
REVISIONS					
DRAWN BY	LC	CHECKED	JD		
DATE	04-05-2023	APPROVED	JD		

REQUEST ENCROACHMENT INTO THE RIGHTS OF WAY WITHIN THE BLOCK BOUNDED BY WOODWARD AVE., E. GRAND RIVER, FARMER ST., AND GRATIOT AVE. FOR STREETScape ELEMENTS FOR THE PROPOSED HUDSON SITE

CITY OF DETROIT CITY ENGINEERING DIVISION SURVEY BUREAU	
JOB NO.	22-52
DRWG. NO.	22-52-1