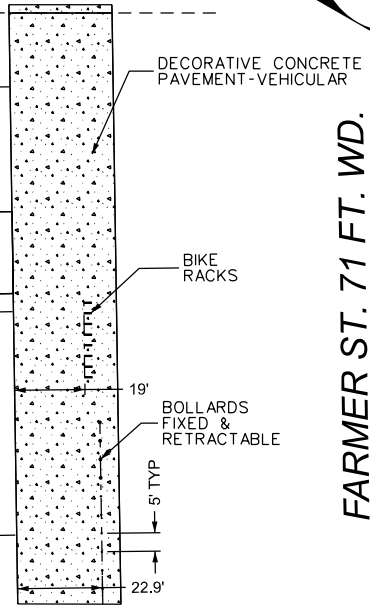
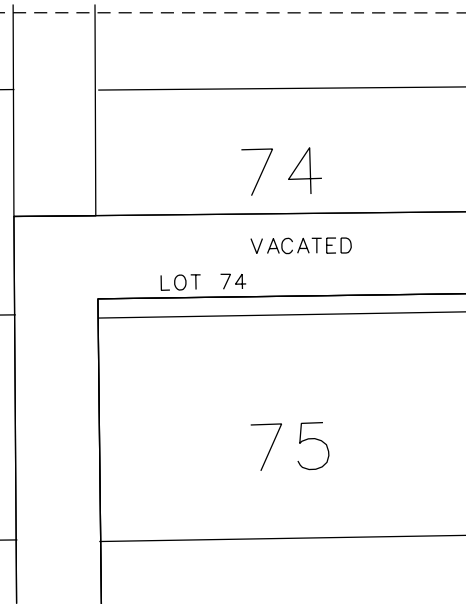
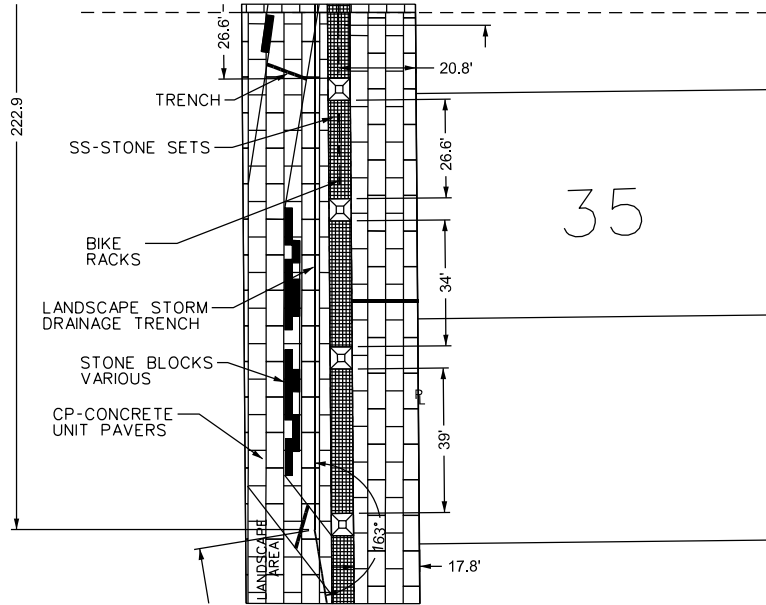




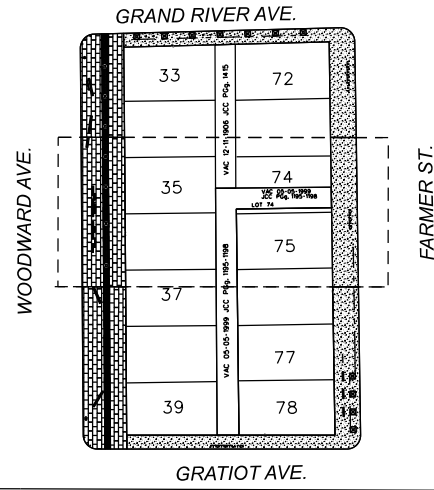
WOODWARD AVE. 120 FT. WD.



FARMER ST. 71 FT. WD.

- IRRIGATION AND ELECTRICAL CONDUIT TRENCH
- TREE PLANTER GRATE 6'X6'
- BOLLARD
- BIKE RACK 2'X2'10"X3"
- 2' X 3.5' DEEP TRENCH FOR LANDSCAPE STORM DRAINAGE
- STONE BLOCK - VARIOUS SIZES
- TRASH RECEPTACLE
- DECORATIVE CONCRETE PAVEMENT-VEHICULAR
- CP-CONCRETE UNIT PAVERS
- SS-STONE SETS

- REQUEST ENCROACHMENT



CARTO 28 A

REQUEST ENCROACHMENT INTO THE RIGHTS OF WAY WITHIN THE BLOCK BOUNDED BY WOODWARD AVE., E. GRAND RIVER, FARMER ST., AND GRATIOT AVE. FOR STREETScape ELEMENTS FOR THE PROPOSED HUDSON SITE

CITY OF DETROIT	
CITY ENGINEERING DIVISION	
SURVEY BUREAU	
JOB NO.	22-52
DRWG. NO.	22-52-2

B					
A					
DESCRIPTION	DRWN	CHKD	APPD	DATE	
REVISIONS					
DRAWN BY	LC	CHECKED	JD		
DATE	04-05-2023	APPROVED	JD		