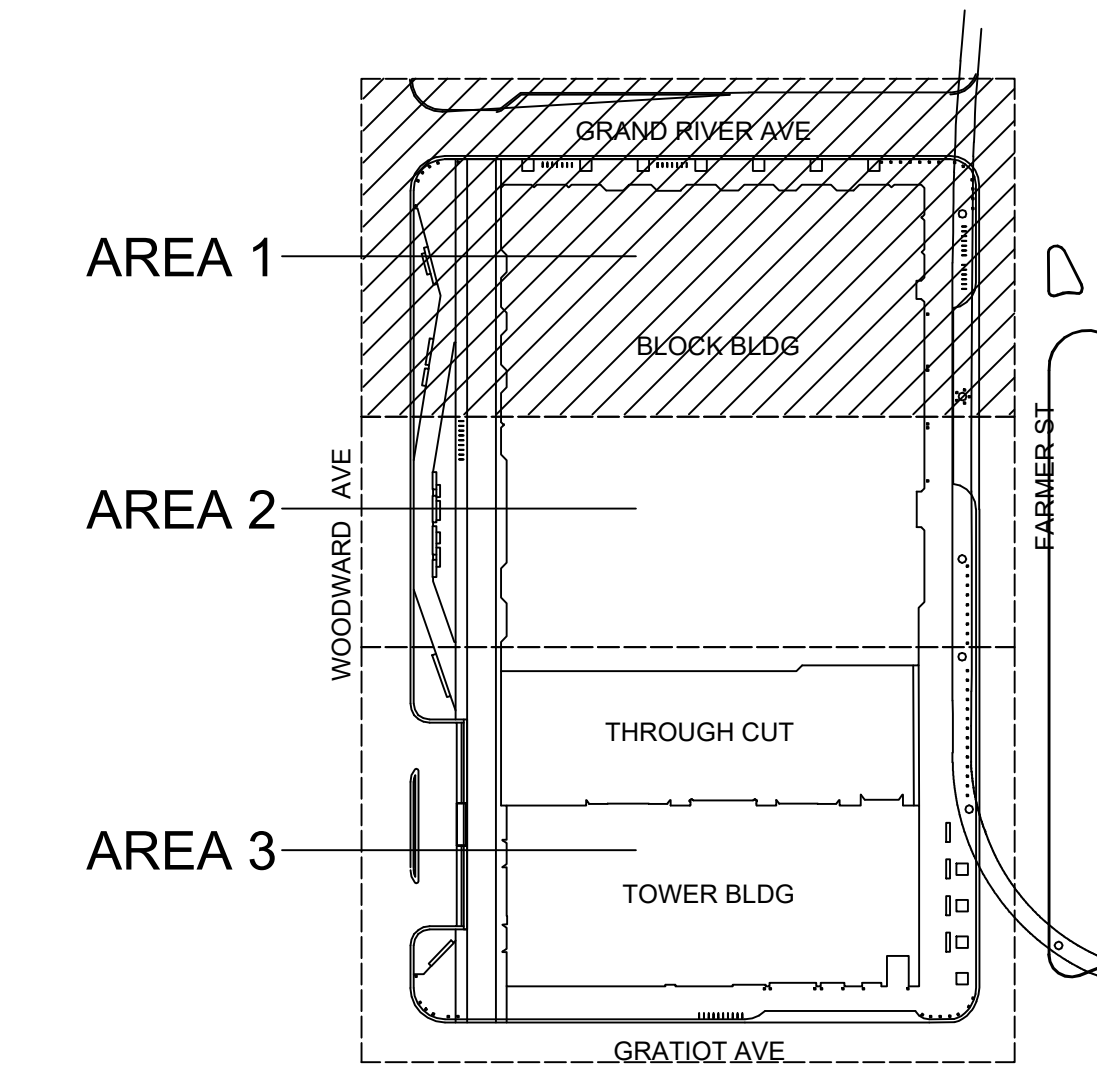


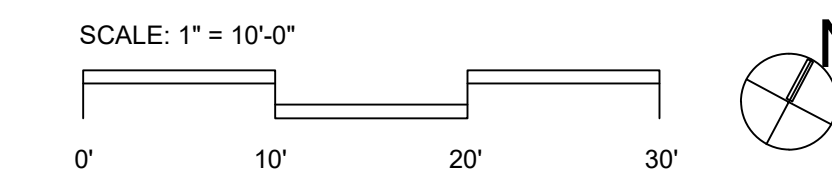
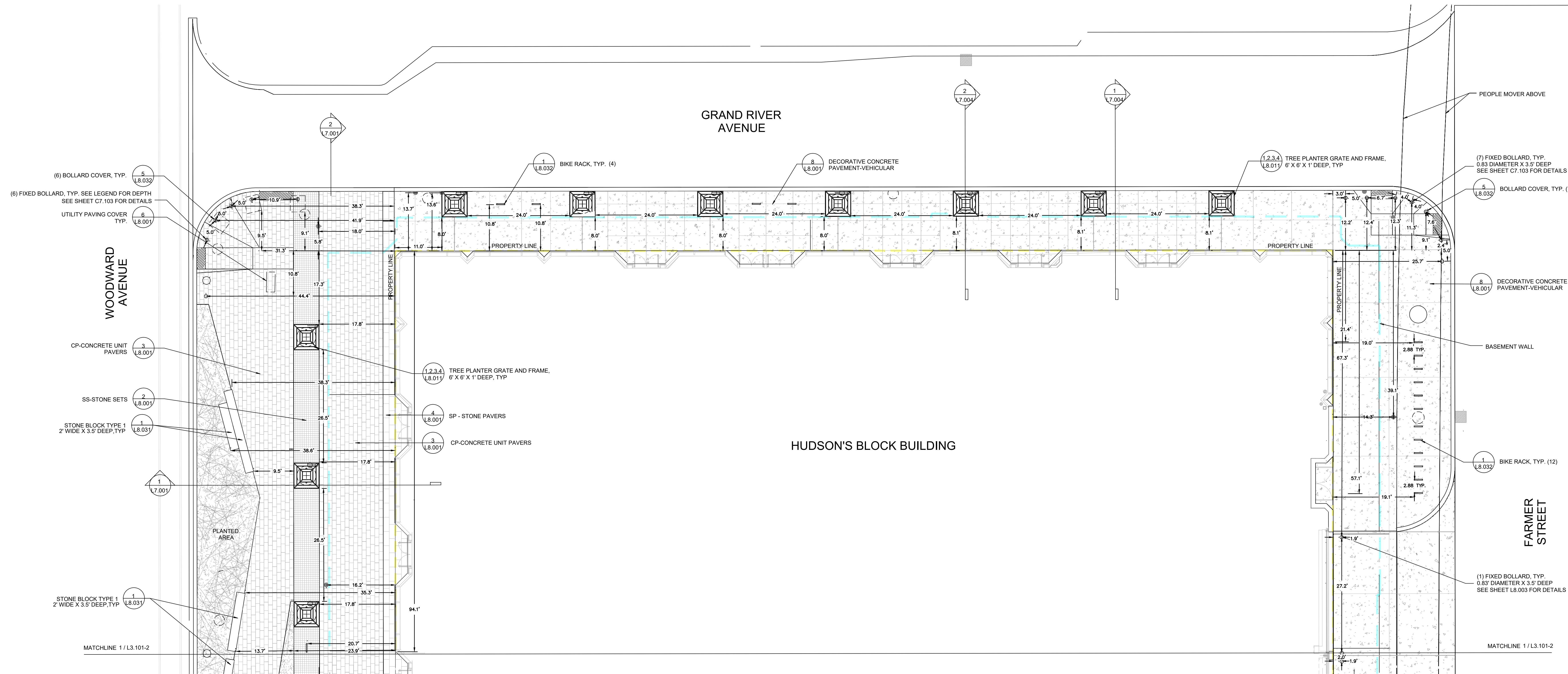
**MATERIALS LEGEND**

	LIMIT OF WORK		PLANTED AREA		ADA DETECTIBLE WARNING
	PROPERTY LINE		STONE BLOCK ELEMENT OR METAL BENCH		SHALLOW MOUNT BOLLARD 3.5' X 3.83' X 1' DEEP
	EX. EASEMENT		STONE CURB		DEEP MOUNT BOLLARD 0.83' DIAMETER X 3.5' DEEP
	BASEMENT WALL		CONCRETE CURB		UTILITY PAVING COVER
	STRUCTURAL SLAB		BIKE RACK		EXISTING LIGHT POLE
	STEP IN STRUCTURAL SLAB		TREE GRATE		

**KEY MAP**

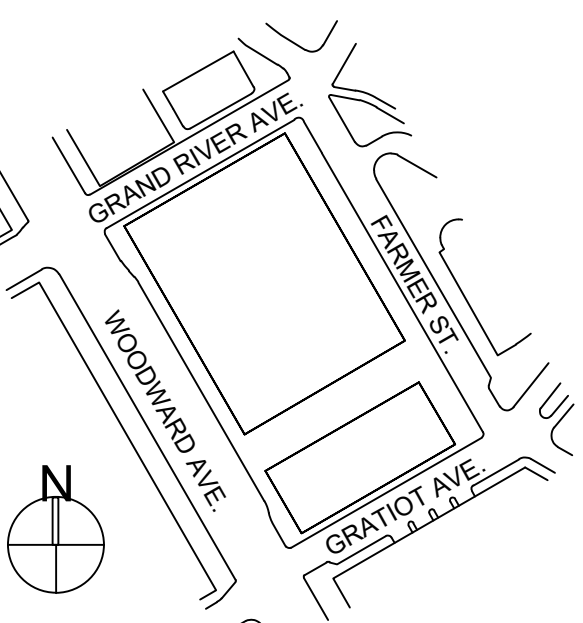


**MAP 22-52  
HUDSONS AT-GRADE ENCROACHMENT  
PLAN SHEETS AND DETAILS**



**HUDSON'S SITE**  
DETROIT, MICHIGAN

- HUDSON REAL PROPERTY, LLC**  
Owner
- ShoP ARCHITECTS**  
Design Architect
- KENDALL/HEATON ASSOCIATES, INC.**  
Architect of Record
- HAMILTON ANDERSON ASSOCIATES**  
AOR Residential Interiors and Landscape
- SURFACEDESIGN, INC.**  
Design Landscape Architect
- BURGHAPPOD ENGINEERING**  
Structural and MEP/FP Engineer  
LEED/WELL and Energy
- GIFFELS WEBSTER, INC.**  
Civil Engineering
- BARKER MOHANDAS LLC**  
Vertical Transportation Consultant
- WALKER CONSULTANTS**  
Parking Consultant
- HEINTGES CONSULTING ARCHITECTS & ENGINEERS P.C.**  
Facade Systems Consultant
- ARUP GROUP LIMITED**  
Acoustics, AV, IT, & Security Consultant
- THEATRE PROJECTS CONSULTANTS**  
Theatre And Theatre AV Consultant
- WC&PARTNERS**  
Kitchen and Food Service Consultant
- CODE CONSULTANTS, INC.**  
Code Consultant
- LERCH BATES & ASSOCIATES**  
Facade Maintenance Consultant
- DOT DASH**  
Lighting Consultant
- AQUATECTONIC**  
Pool Consultant
- 2 X 4**  
Signage Consultant



NO.	DATE	ISSUE
5.04	APR 22	BULLETIN NO. 45
4.21	APR 21	BULLETIN NO. 29
3.09	OCT 20	BULLETIN NO. 18
2.29	JUN 20	BULLETIN NO. 13
1.15	MAY 20	BULLETIN NO. 11

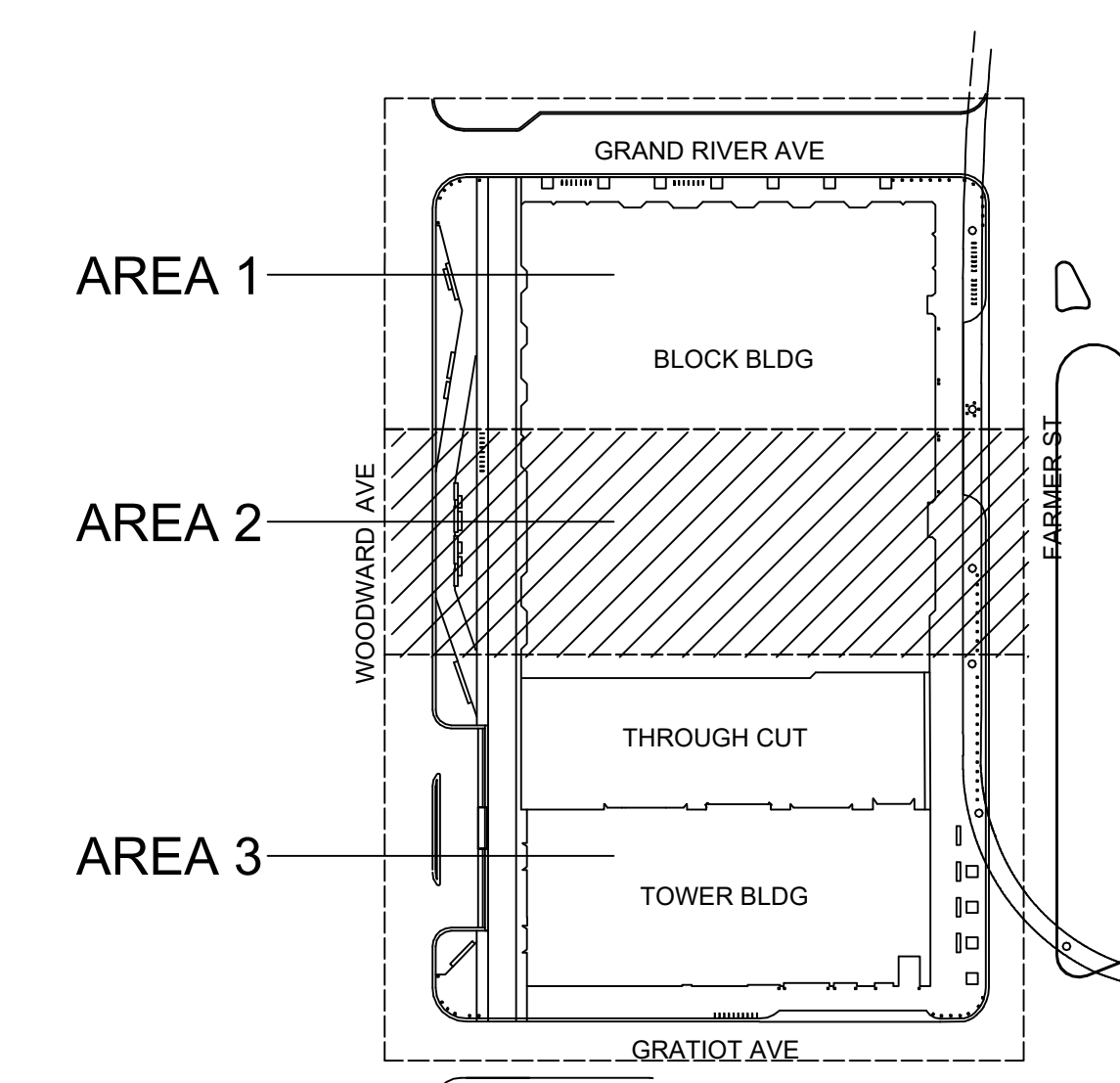
PROJECT NUMBER KHA 17033  
DRAWING TITLE  
**MATERIALS PLAN  
- LEVEL 1 - AREA 1**

DRAWING NUMBER  
**L3.101-1**

**MATERIALS LEGEND**

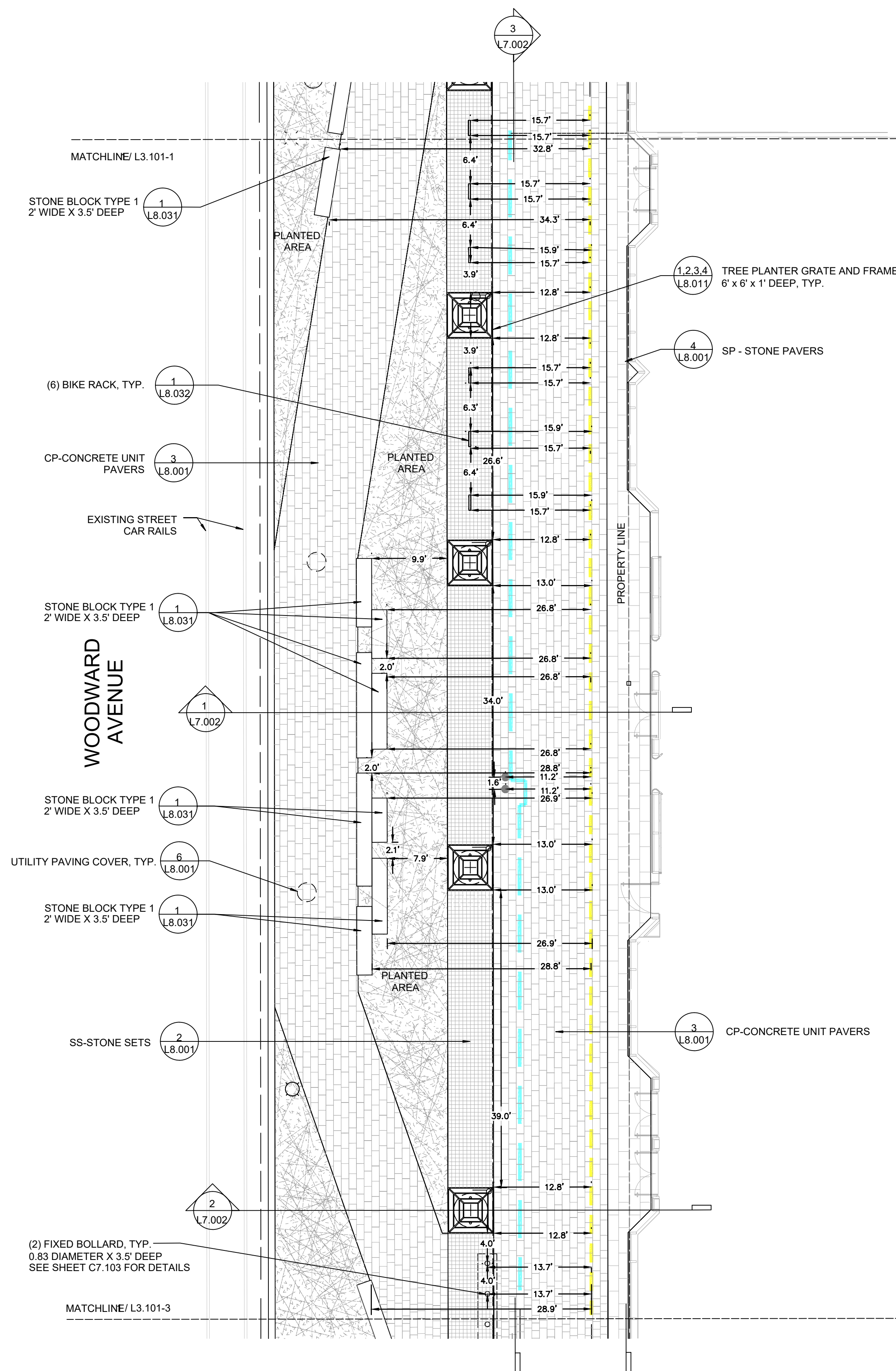
- LIMIT OF WORK
- PROPERTY LINE
- EX. EASEMENT
- BASEMENT WALL
- STRUCTURAL SLAB
- STEP IN STRUCTURAL SLAB
- PLANTED AREA
- STONE BLOCK ELEMENT OR METAL BENCH
- STONE CURB
- CONCRETE CURB
- BIKE RACK
- TREE GRATE
- ADA DETECTIBLE WARNING
- SHALLOW MOUNT BOLLARD 3.5' X 3.5' X 1' DEEP
- DEEP MOUNT BOLLARD 0.83' DIAMETER X 3.5' DEEP
- UTILITY PAVING COVER
- EXISTING LIGHT POLE

**KEY MAP**

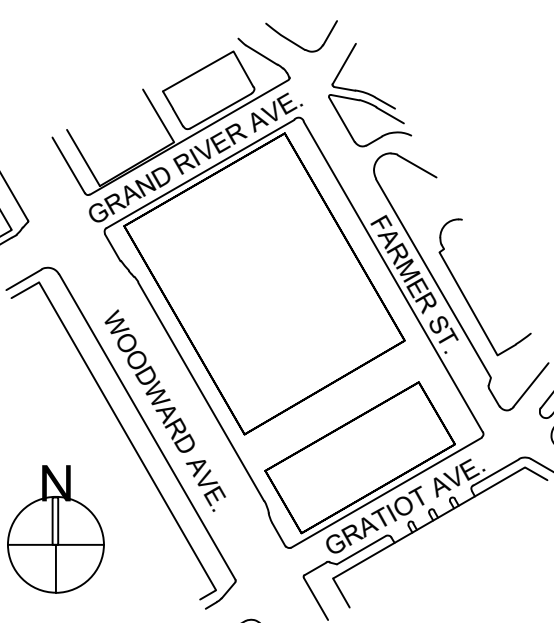
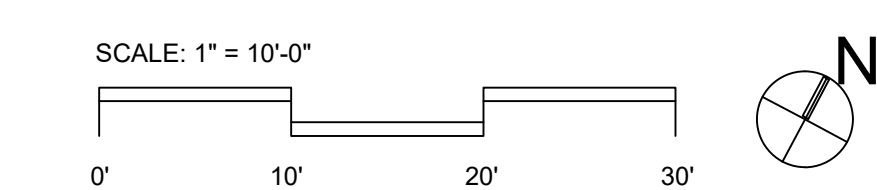
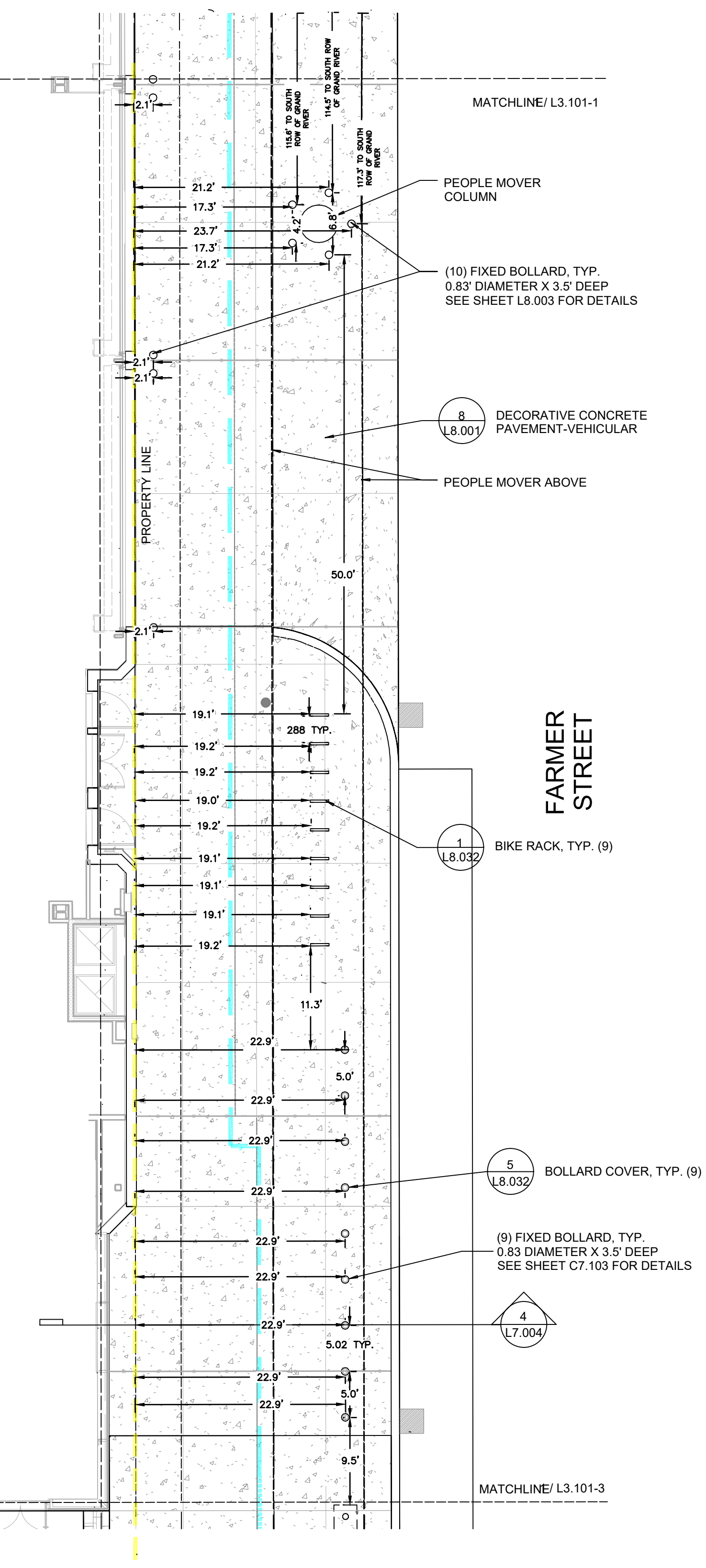


**HUDSON'S SITE**  
DETROIT, MICHIGAN

- HUDSON REAL PROPERTY, LLC**  
Owner
- ShoP ARCHITECTS**  
Design Architect
- KENDALL/HEATON ASSOCIATES, INC.**  
Architect of Record
- HAMILTON ANDERSON ASSOCIATES**  
AOR Residential Interiors and Landscape
- SURFACEDESIGN, INC.**  
Design Landscape Architect
- BUROHAPPOLD ENGINEERING**  
Structural and MEP/FP Engineer  
LEED/WELL and Energy
- GIFFELS WEBSTER, INC.**  
Civil Engineering
- BARKER MOHANDAS LLC**  
Vertical Transportation Consultant
- WALKER CONSULTANTS**  
Parking Consultant
- HEINTGES CONSULTING ARCHITECTS & ENGINEERS P.C.**  
Facade Systems Consultant
- ARUP GROUP LIMITED**  
Acoustics, AV, IT, & Security Consultant
- THEATRE PROJECTS CONSULTANTS**  
Theatre And Theatre AV Consultant
- WC&PARTNERS**  
Kitchen and Food Service Consultant
- CODE CONSULTANTS, INC.**  
Code Consultant
- LERCH BATES & ASSOCIATES**  
Facade Maintenance Consultant
- DOT DASH**  
Lighting Consultant
- AQUATECTONIC**  
Pool Consultant
- 2 X 4**  
Signage Consultant



HUDSON'S BLOCK BUILDING



NO.	DATE	ISSUE
5.04	APR 22	BULLETIN NO. 45
4.21	APR 21	BULLETIN NO. 29
3.09	OCT 20	BULLETIN NO. 18
2.29	JUN 20	BULLETIN NO. 13
1.15	MAY 20	BULLETIN NO. 11

PROJECT NUMBER KHA 17033  
DRAWING TITLE

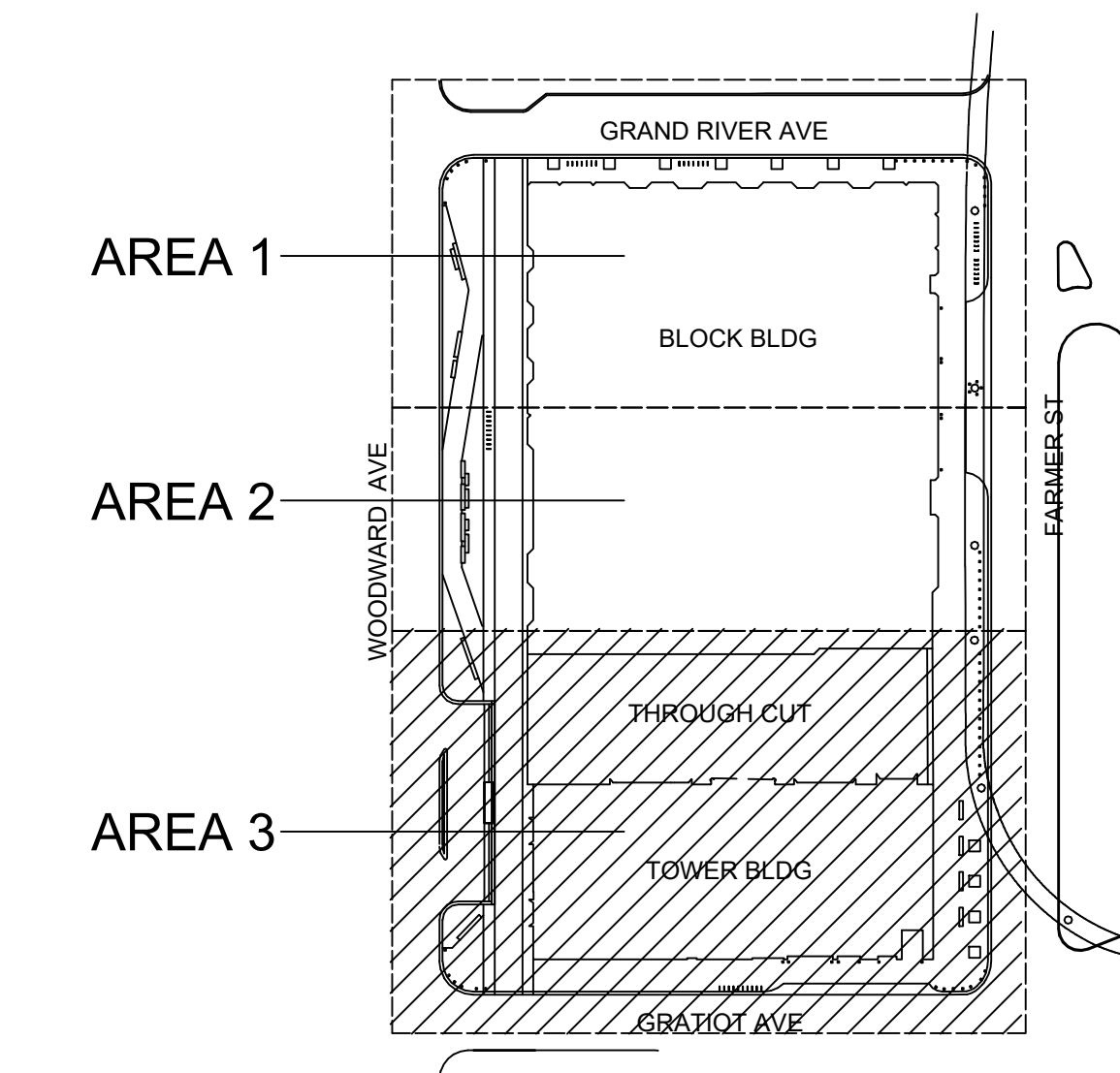
**MATERIALS PLAN - LEVEL 1 - AREA 2**

DRAWING NUMBER  
**L3.101-2**

**MATERIALS LEGEND**

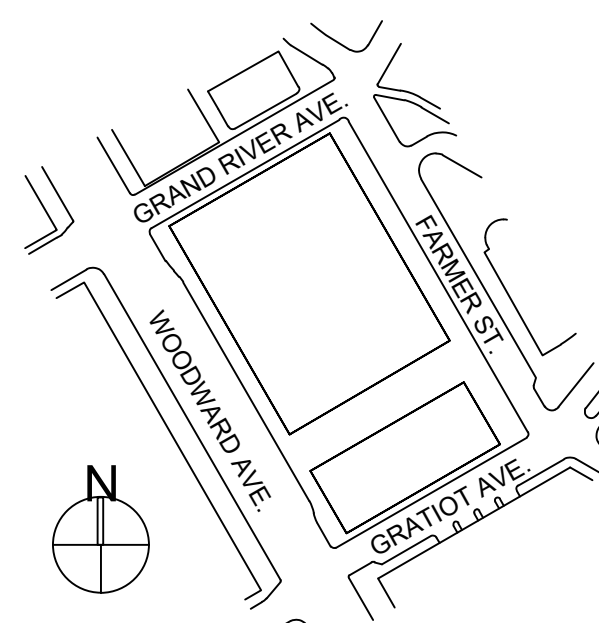
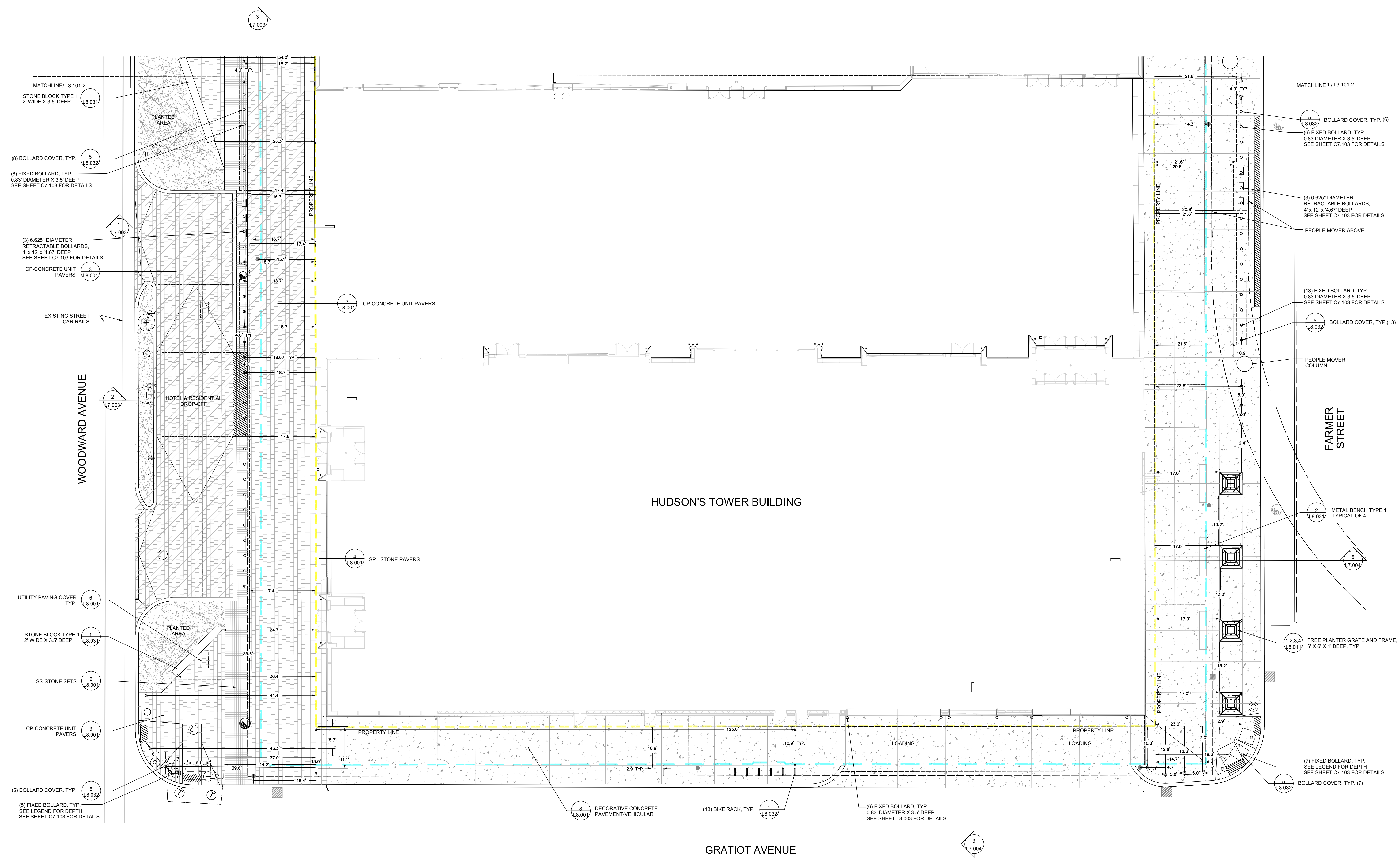
- LIMIT OF WORK
- PROPERTY LINE
- EX. EASEMENT
- BASEMENT WALL
- STRUCTURAL SLAB
- STEP IN STRUCTURAL SLAB
- PLANTED AREA
- STONE BLOCK ELEMENT OR METAL BENCH
- STONE CURB
- CONCRETE CURB
- BIKE RACK
- TREE GRATE
- ADA DETECTIBLE WARNING
- SHALLOW MOUNT BOLLARD 3.5' X 3.83' X 1' DEEP
- DEEP MOUNT BOLLARD 0.83' DIAMETER X 3.5' DEEP
- UTILITY PAVING COVER
- EXISTING LIGHT POLE

**KEY MAP**



**HUDSON'S SITE**  
DETROIT, MICHIGAN

- HUDSON REAL PROPERTY, LLC**  
Owner
- ShoP ARCHITECTS**  
Design Architect
- KENDALL/HEATON ASSOCIATES, INC.**  
Architect of Record
- HAMILTON ANDERSON ASSOCIATES**  
AOR Residential Interiors and Landscape
- SURFACEDESIGN, INC.**  
Design Landscape Architect
- BUROHAPPOD ENGINEERING**  
Structural and MEP/FP Engineer  
LEED/WELL and Energy
- GIFFELS WEBSTER, INC.**  
Civil Engineering
- BARKER MOHANDAS LLC**  
Vertical Transportation Consultant
- WALKER CONSULTANTS**  
Parking Consultant
- HEINTGES CONSULTING ARCHITECTS & ENGINEERS P.C.**  
Facade Systems Consultant
- ARUP GROUP LIMITED**  
Acoustics, AV, IT, & Security Consultant
- THEATRE PROJECTS CONSULTANTS**  
Theatre And Theatre AV Consultant
- WC&PARTNERS**  
Kitchen and Food Service Consultant
- CODE CONSULTANTS, INC.**  
Code Consultant
- LERCH BATES & ASSOCIATES**  
Facade Maintenance Consultant
- DOT DASH**  
Lighting Consultant
- AQUATECTONIC**  
Pool Consultant
- 2 X 4**  
Signage Consultant



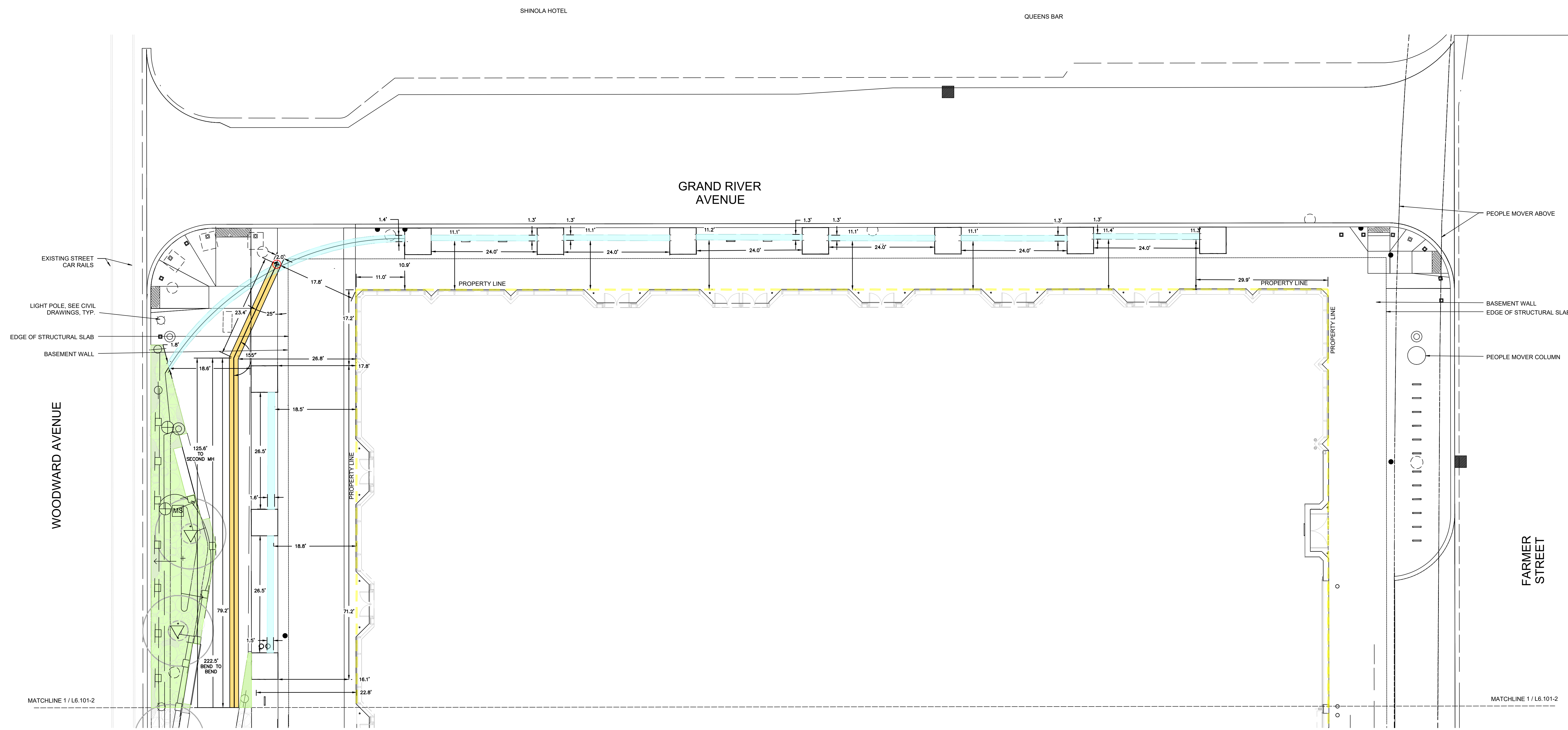
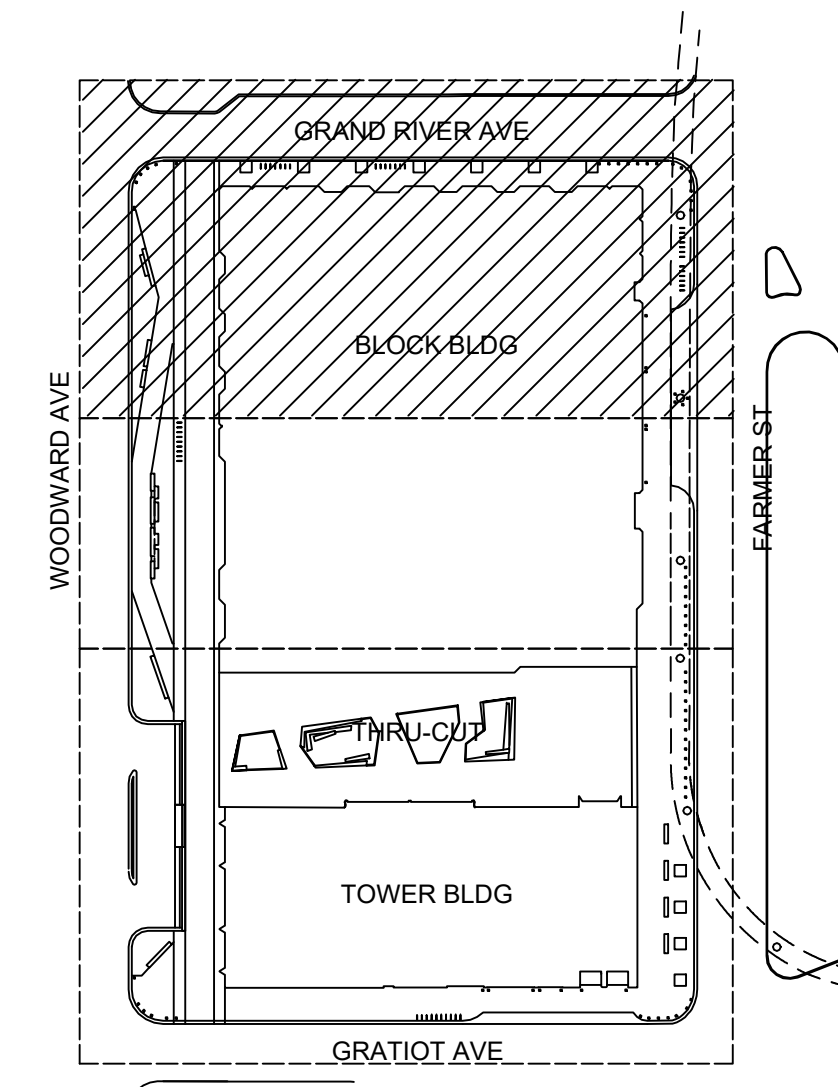
NO.	DATE	ISSUE
7.04	APR 22	BULLETIN NO. 45
6.23	OCT 21	BULLETIN NO. 40
5.23	APR 21	BULLETIN NO. 29
4.04	DEC 20	BULLETIN NO. 21
3.09	OCT 20	BULLETIN NO. 18
2.29	JUN 20	BULLETIN NO. 13
1.15	MAY 20	BULLETIN NO. 11

PROJECT NUMBER KHA 17033  
DRAWING TITLE  
**MATERIALS PLAN - LEVEL 1 - AREA 3**  
DRAWING NUMBER  
**L3.101-3**

**IRRIGATION LEGEND**

- LIMIT OF WORK
- - - PROPERTY LINE
- - - STRUCTURAL SLAB
- LANDSCAPE AREA
- 2'-3" WIDE BY 3'-5" DEEP TRENCH BETWEEN LANDSCAPE AREAS AND TREE GRATES FOR ELECTRICAL AND IRRIGATION CONDUIT
- 2' WIDE BY 3'-5" DEEP TRENCH FOR LANDSCAPE STORM DRAINAGE

**KEY MAP**



**HUDSON'S 550**  
DETROIT, MICHIGAN

**HUDSON REAL PROPERTY, LLC**  
Owner

**SHoP ARCHITECTS**  
Design Architect

**KENDALL HEATON ASSOCIATES, INC.**  
Architect of Record

**HAMILTON ANDERSON ASSOCIATES**  
AOR Residential Interiors and Landscape

**SURFACE DESIGN, INC.**  
Design Landscape Architect

**BUROHAPPOLD ENGINEERING**  
Structural and MEP/FP Engineer  
LEED/WELL and Energy

**GIFELS WEBSTER, INC.**  
Civil Engineering

**BARKER MOHANDAS LLC**  
Vertical Transportation Consultant

**WALKER CONSULTANTS**  
Parking Consultant

**HEINTGES CONSULTING ARCHITECTS & ENGINEERS P.C.**  
Facade Systems Consultant

**ARUP GROUP LIMITED**  
Acoustics, AV, IT, & Security Consultant

**THEATRE PROJECTS CONSULTANTS**  
Theatre And Theatre AV Consultant

**WC&PARTNERS**  
Kitchen and Food Service Consultant

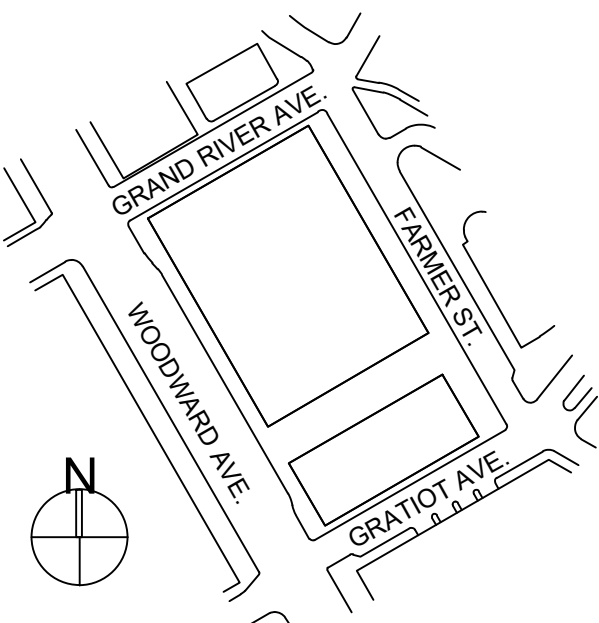
**CODE CONSULTANTS, INC.**  
Code Consultant

**LERCH BATES & ASSOCIATES**  
Facade Maintenance Consultant

**DOT DASH**  
Lighting Consultant

**AQUATECTONIC**  
Pool Consultant

**2 X 4**  
Signage Consultant



1 28 JUN 20 BULLETIN NO. 13

NO. DATE ISSUE

PROJECT NUMBER KHA 17033

DRAWING TITLE

**IRRIGATION PLAN  
- LEVEL 1 - AREA 1**

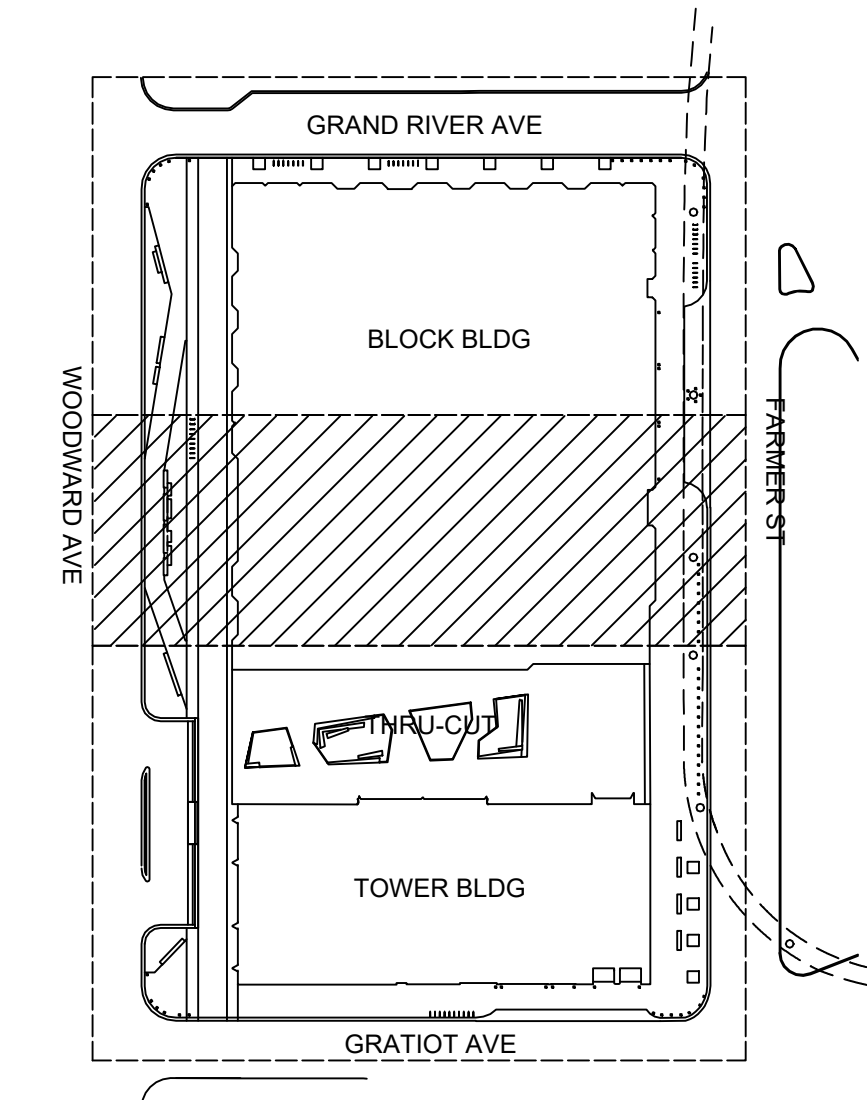
DRAWING NUMBER

**IR1.101-1**

**IRRIGATION LEGEND**

- LIMIT OF WORK
- - - PROPERTY LINE
- - - STRUCTURAL SLAB
- LANDSCAPE AREA
- 2'-3" WIDE BY 3'-5" DEEP TRENCH BETWEEN LANDSCAPE AREAS AND TREE GRATES FOR ELECTRICAL AND IRRIGATION CONDUIT
- 2' WIDE BY 3'-5" DEEP TRENCH FOR LANDSCAPE STORM DRAINAGE

**KEY MAP**



**HUDSON'S SITE**  
DETROIT, MICHIGAN

HUDSON REAL PROPERTY, LLC  
Owner

SHoP ARCHITECTS  
Design Architect

KENDALL HEATON ASSOCIATES, INC.  
Architect of Record

HAMILTON ANDERSON ASSOCIATES  
AOR Residential Interiors and Landscape

SURFACE DESIGN, INC.  
Design Landscape Architect

BUROHAPPOLD ENGINEERING  
Structural and MEP/FP Engineer  
LEED/WELL and Energy

GIFFELS WEBSTER, INC.  
Civil Engineering

BARKER MOHANDAS LLC  
Vertical Transportation Consultant

WALKER CONSULTANTS  
Parking Consultant

HEINTGES CONSULTING ARCHITECTS  
& ENGINEERS P.C.  
Facade Systems Consultant

ARUP GROUP LIMITED  
Acoustics, AV, IT, & Security Consultant

THEATRE PROJECTS CONSULTANTS  
Theatre And Theatre AV Consultant

WC&PARTNERS  
Kitchen and Food Service Consultant

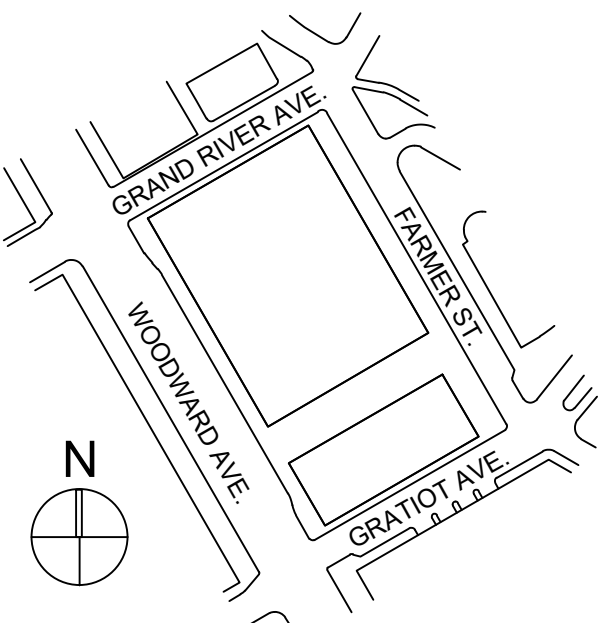
CODE CONSULTANTS, INC.  
Code Consultant

LERCH BATES & ASSOCIATES  
Facade Maintenance Consultant

DOT DASH  
Lighting Consultant

AQUATECTONIC  
Pool Consultant

2 X 4  
Signage Consultant



NO.	DATE	ISSUE
1	28 JUN 20	BULLETIN NO. 13

PROJECT NUMBER KHA 17033

DRAWING TITLE

**IRRIGATION PLAN**

**- LEVEL 1 - AREA 2**

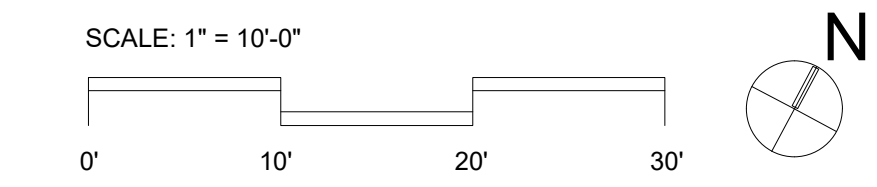
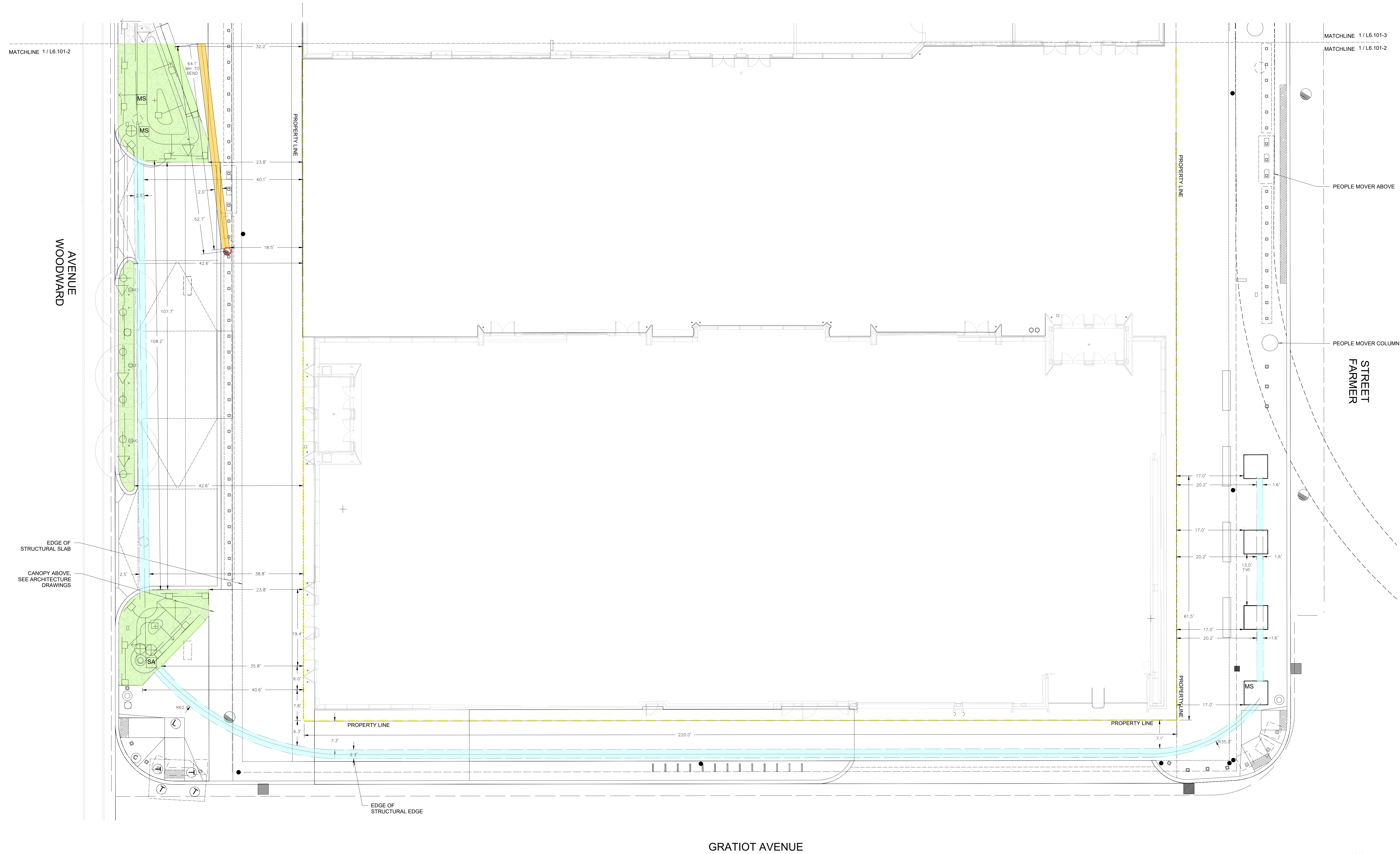
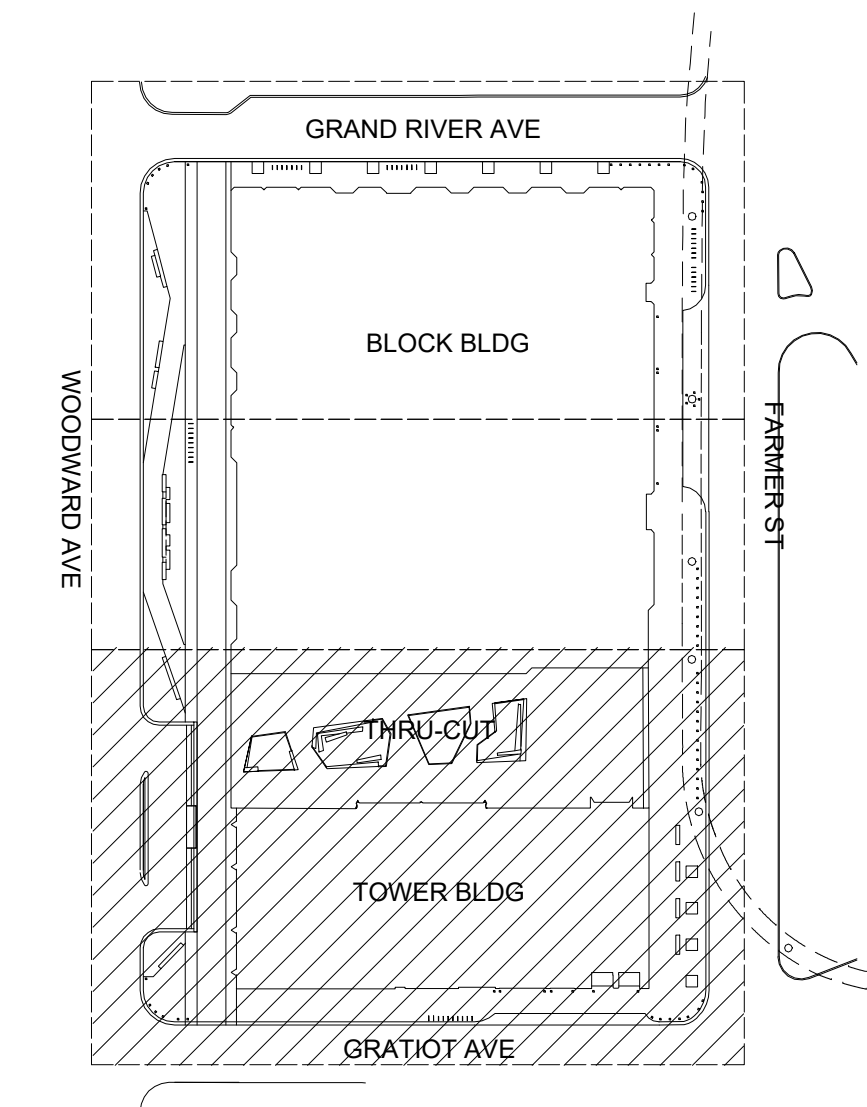
DRAWING NUMBER

**IR1.101-2**

**IRRIGATION LEGEND**

- LIMIT OF WORK
- - - PROPERTY LINE
- - - STRUCTURAL SLAB
- LANDSCAPE AREA
- 2'-3" WIDE BY 3'-5" DEEP TRENCH BETWEEN LANDSCAPE AREAS AND TREE GRATES FOR ELECTRICAL AND IRRIGATION CONDUIT
- 2' WIDE BY 3'-5" DEEP TRENCH FOR LANDSCAPE STORM DRAINAGE

**KEY MAP**



**HUDSON'S SITE**  
DETROIT, MICHIGAN

**HUDSON REAL PROPERTY, LLC**  
Owner

**SHoP ARCHITECTS**  
Design Architect

**KENDALL HEATON ASSOCIATES, INC.**  
Architect of Record

**HAMILTON ANDERSON ASSOCIATES**  
A/E/P: Residential Interiors and Landscape

**SURFACE DESIGN, INC.**  
Design Landscape Architect

**BURHOAPPOLD ENGINEERING**  
Structural and MEP/FP Engineer  
LEED/WELL and Energy

**GIFFELS WEBSTER, INC.**  
Civil Engineering

**BARKER MOHANDAS LLC**  
Vertical Transportation Consultant

**WALKER CONSULTANTS**  
Parking Consultant

**HEINTGES CONSULTING ARCHITECTS & ENGINEERS P.C.**  
Facade Systems Consultant

**ARUP GROUP LIMITED**  
Acoustics, AV, IT, & Security Consultant

**THEATRE PROJECTS CONSULTANTS**  
Theatre And Theatre AV Consultant

**WC&PARTNERS**  
Kitchen and Food Service Consultant

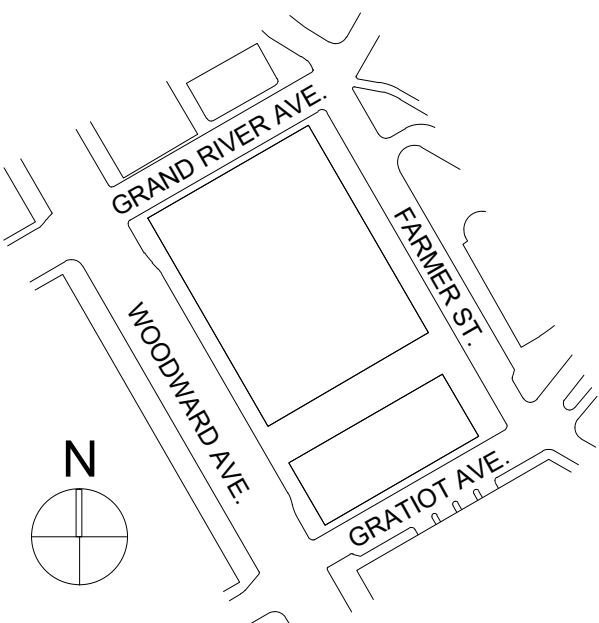
**CODE CONSULTANTS, INC.**  
Code Consultant

**LERCH BATES & ASSOCIATES**  
Facade Maintenance Consultant

**DOT DASH**  
Lighting Consultant

**AQUATECTONIC**  
Pool Consultant

**2 X 4**  
Signage Consultant



1 28 JUN 20 BULLETIN NO. 13  
NO. DATE ISSUE

PROJECT NUMBER KHA 17033  
DRAWING TITLE

**IRRIGATION PLAN**  
**- LEVEL 1 - AREA 3**

DRAWING NUMBER  
**IR1.101-3**