

# City of Detroit

Janice M. Winfrey  
City Clerk

OFFICE OF THE CITY CLERK

Andre P. Gilbert II  
Deputy City Clerk

## DEPARTMENT PETITION REFERENCE COMMUNICATION

*To: The Department or Commission Listed Below*

*From: Janice M Winfrey, Detroit City Clerk*

---

The following petition is herewith referred to you for report and recommendation to the City Council.

In accordance with that body's directive, kindly return the same with your report in duplicate within four (4) weeks.

---

Petition No.	2023-247
Name of Petitioner	Detroit/Wayne Stadium Authority
Description of Petition	Petition to Outright vacate the utility easement reserved over that part of vacated Columbia Street, between Woodward Avenue and Witherell Street, vacated per City Council decision on Dec 9th, 1994.
Type of Petition	<b>Alley Vacation/Encroachment/Utility Vacation:</b>
Submission Date	06/30/2023
Concerned Departments	Department of Public Works, Planning and Development Department, City Engineering Division
Petitioner Contact	Detroit/Wayne Stadium Authority 600 Randolph, 5th FL Detroit, MI, 48226



CITY OF DETROIT  
DEPARTMENT OF PUBLIC WORKS  
CITY ENGINEERING DIVISION

COLEMAN A. YOUNG MUNICIPAL CENTER  
2 WOODWARD AVE. SUITE 601  
DETROIT, MICHIGAN 48226  
PHONE: (313) 224-3949 TTY: 711  
WWW.DETROITMI.GOV

---

To: Clerk's Office  
From: The Department of Public Works  
City Engineering Division  
MapsandRecordsBureau@DetroitMI.Gov  
(313) 224-3970

Petitioner:  
Detroit/Wayne Stadium Authority  
600 Randolph, 5<sup>th</sup> FL  
Detroit, MI, 48226

On behalf of the above-mentioned petitioner the Department of Public Works: City Engineering Division is submitting a petition request for the below mentioned action. The petitioner has received a project consultation from the Department of Public Works: City Engineering Division and has been advised the following:

Type of action recommended:

Petition to Outright vacate the utility easement reserved over that part of vacated Columbia Street, between Woodward Avenue and Witherell Street, vacated per City Council decision on Dec 9th, 1994.

Jered Dean  
Manager II  
Department of Public Works  
City Engineering Division  
313-224-3985



September 27, 2022

**Honorable Detroit City Council  
C/o Detroit City Clerk  
2 Woodward Avenue  
200 Coleman A. Young Municipal Center  
Detroit, Michigan 48226**

RE: Giffels Webster – A request of the vacation of the public easement within the block bounded by Woodward Avenue (120 feet wide), E. Montcalm Street (50 feet wide), Witherell Street (60 feet wide), and E. Elizabeth Street (60 feet wide).

Giffels Webster, 28 W. Adams, Suite 1200, Detroit, Michigan 48226 respectfully requests the following outright vacation within the block bounded by Woodward Avenue (120 feet wide), E. Montcalm Street (50 feet wide), Witherell Street (60 feet wide), and E. Elizabeth Street (60 feet wide):

- Outright vacation of the public utility easement within the former East Columbia Street right-of-way (50 feet wide) from the eastern Woodward Avenue (120 feet wide) right-of-way and western Witherell Street (60 feet wide) right-of-way.

See attached exhibit for further clarification. We have commenced dialogue with the City of Detroit's Department of Public Works – City Engineering Division, DTE, DWSD and Detroit Thermal. We intend on further engaging all stakeholders to achieve approval of the vacation in a manner that is satisfactory to all interested parties.

The requested vacation will neither impede pedestrian and vehicular traffic, nor will it interfere with the maintenance of the public rights-of-way, including utility company and Fire and Police Department access.

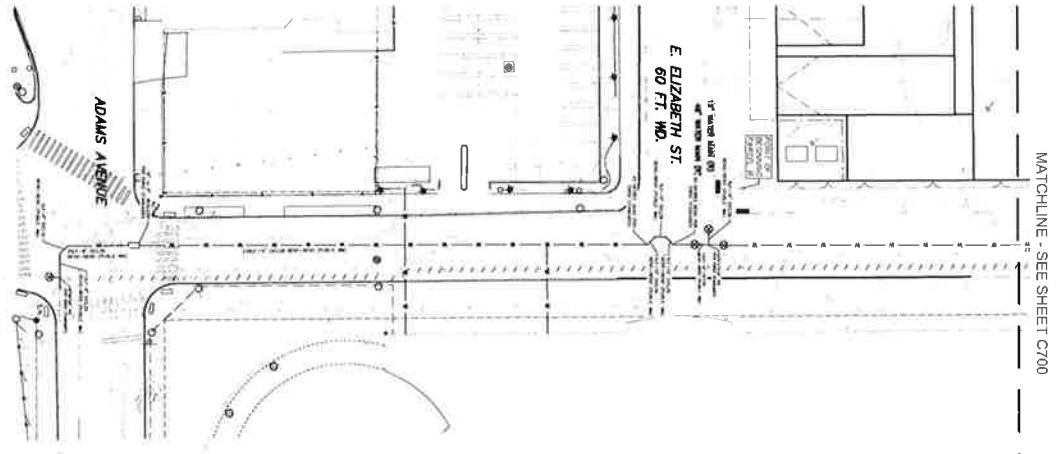
If you should have any questions, please do not hesitate to contact Michael Marks by phone, at 313.980.1469, or by email, at [mmarks@giffelswebster.com](mailto:mmarks@giffelswebster.com).

Respectfully,

A handwritten signature in blue ink, appearing to read "Michael A. Marks".

Michael Marks, PE  
Partner  
Giffels Webster





MATCHLINE - SEE SHEET C700

E. ELIZABETH ST.  
60 FT. WD.

ADAMS AVENUE

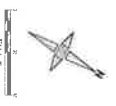
**UTILITY NOTE**  
 THIS DRAWING IS A PRELIMINARY UTILITY PLAN. IT IS NOT TO BE CONSIDERED A FINAL UTILITY PLAN. ANY CHANGES TO THE UTILITY PLAN SHALL BE MADE THROUGH THE APPROPRIATE PERMITS AND ENGINEERING PROCESS.

**UTILITY PLAN - LEGEND**

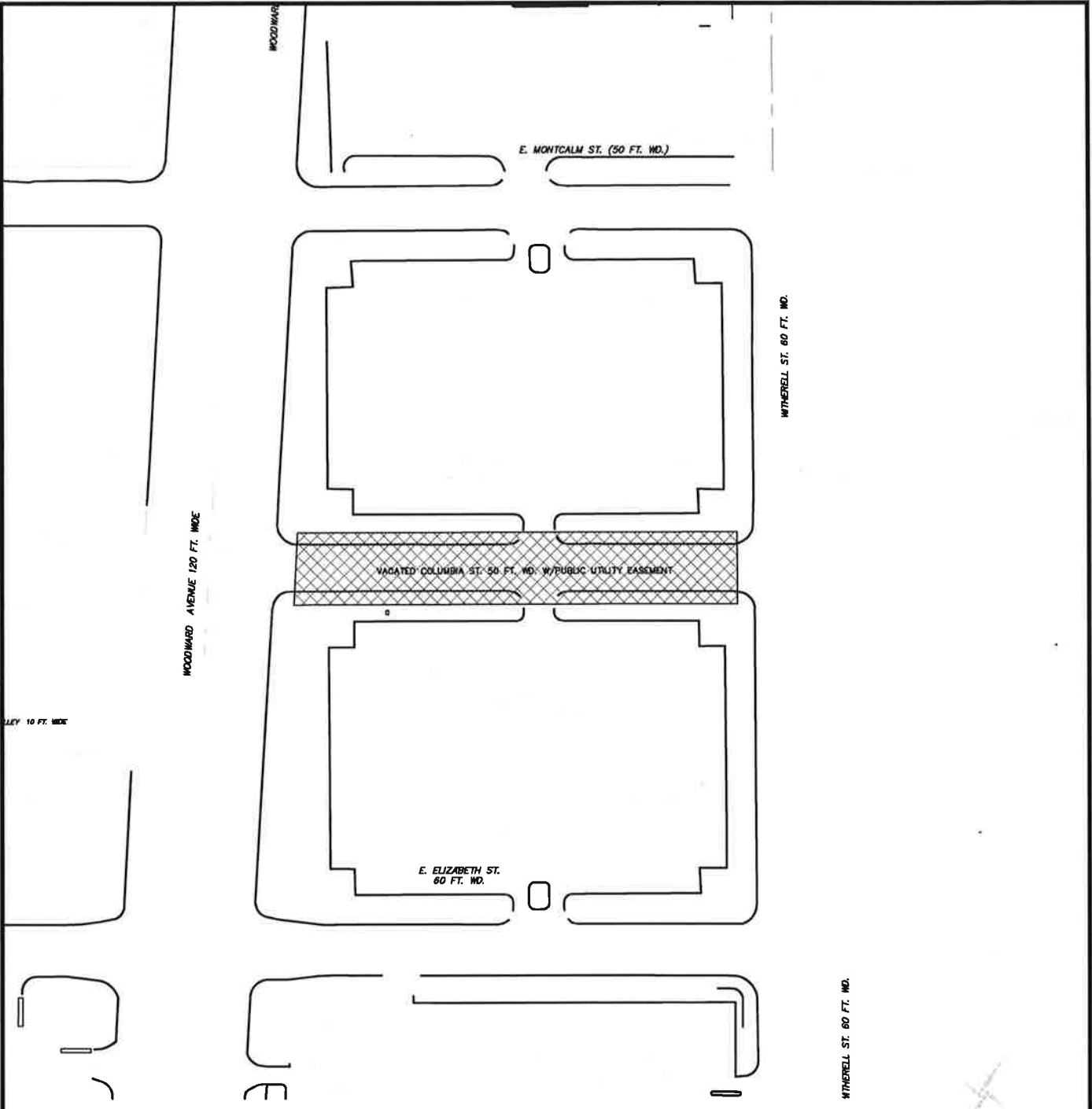
[Symbol]	PROPOSED 12" WATER VALVE
[Symbol]	PROPOSED 12" SEWER VALVE
[Symbol]	PROPOSED 6" GAS VALVE
[Symbol]	PROPOSED 4" ELECTRIC VALVE
[Symbol]	PROPOSED 2" TELEPHONE VALVE
[Symbol]	PROPOSED 1" CABLE VALVE
[Symbol]	PROPOSED 6" WATER MAIN
[Symbol]	PROPOSED 12" SEWER MAIN
[Symbol]	PROPOSED 6" GAS MAIN
[Symbol]	PROPOSED 4" ELECTRIC MAIN
[Symbol]	PROPOSED 2" TELEPHONE MAIN
[Symbol]	PROPOSED 1" CABLE MAIN
[Symbol]	PROPOSED 12" WATER MAIN
[Symbol]	PROPOSED 12" SEWER MAIN
[Symbol]	PROPOSED 6" GAS MAIN
[Symbol]	PROPOSED 4" ELECTRIC MAIN
[Symbol]	PROPOSED 2" TELEPHONE MAIN
[Symbol]	PROPOSED 1" CABLE MAIN



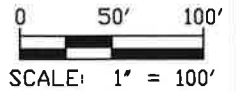
**2200 WOODWARD**  
**MKED-JSE**  
 2200 Woodward Blvd  
 Denver, CO 80202



PROJECT NO: 2200 Woodward Blvd DENVER, CO 80202 PREPARED BY: MKED-JSE DATE: 12/15/11 CHECKED BY: JPD DATE: 12/15/11 SCALE: 1" = 50'	<p>C-701 UTILITY PLAN</p>
-------------------------------------------------------------------------------------------------------------------------------------------------------------------------	-------------------------------



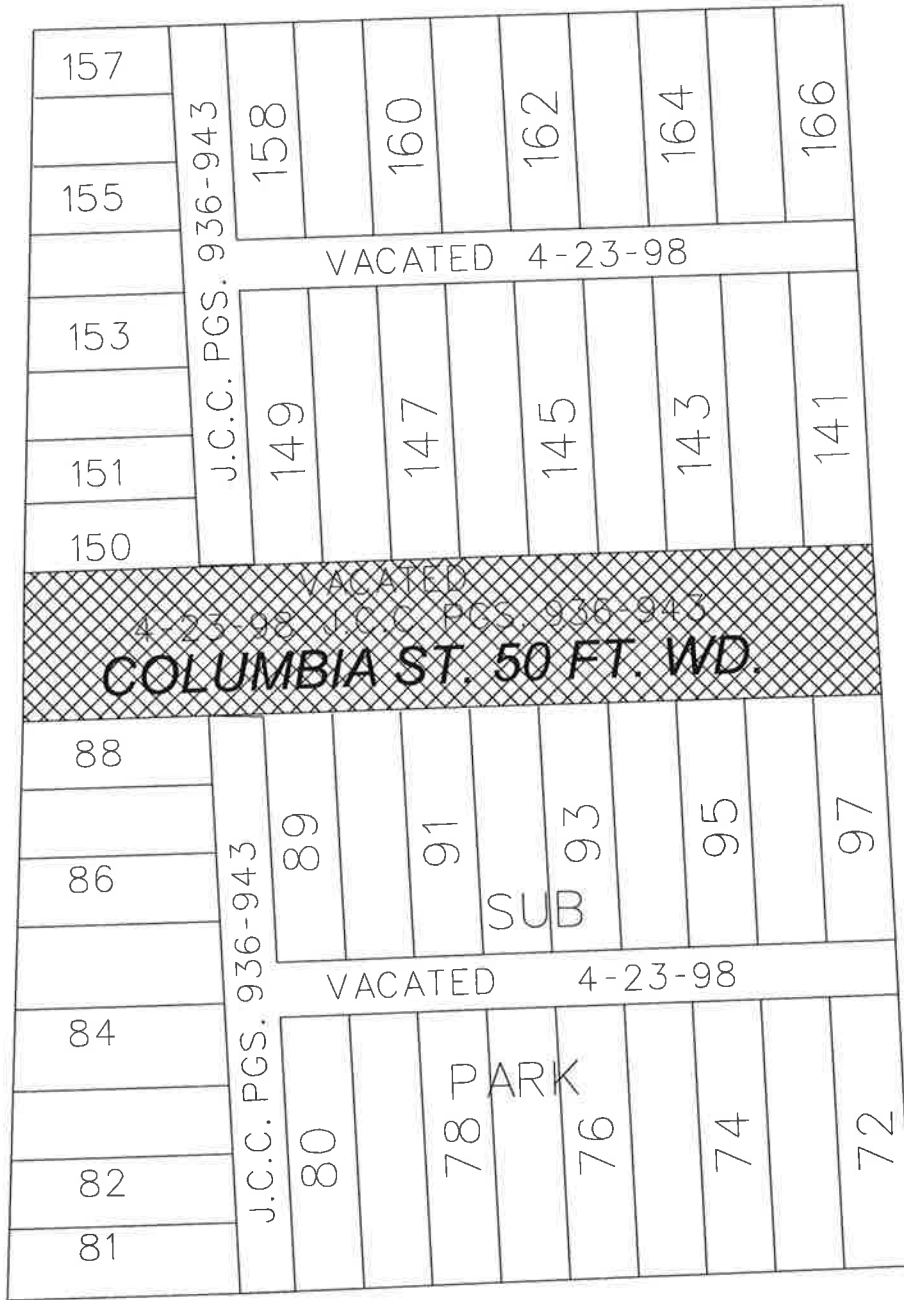
 OUTRIGHT VACATION



**MONTCALM ST. 50 FT. WD.**



**WOODWARD AVE. 120 FT. WD.**



**WITHERELL ST. 60 FT. WD.**

**ELIZABETH ST. 60 FT. WD.**



- OUTRIGHT VACATION

(FOR OFFICE USE ONLY)

CARTO 28 A

B					
A					
DESCRIPTION	DRWN	CHKD	APPD	DATE	
REVISIONS					
DRAWN BY	LC	CHECKED	JD		
DATE	09-28-2022	APPROVED	JD		

**REQUEST TO OUTRIGHT VACATE  
EAST COLUMBIA STREET  
BETWEEN WOODWARD AVE.  
AND WITHERELL ST.**

<b>CITY OF DETROIT</b>	
CITY ENGINEERING DIVISION	
SURVEY BUREAU	
JOB NO.	22-85
DRWG. NO.	