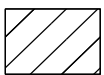
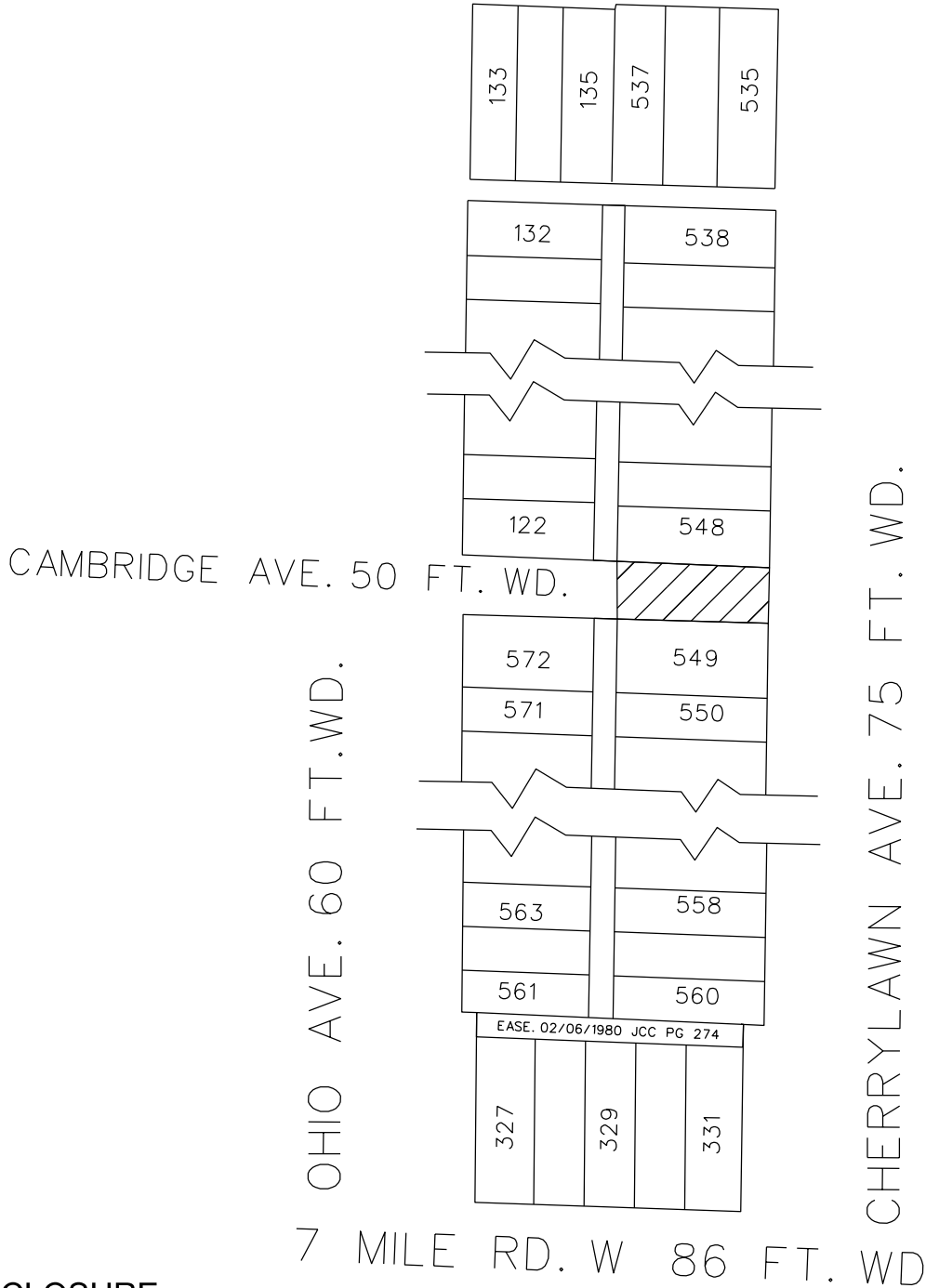




OUTER DR. W. 150 FT. WD



-CLOSURE

(FOR OFFICE USE ONLY)

CARTO 88 E

B					
A					
DESCRIPTION		DRWN	CHKD	APPD	DATE
REVISIONS					
DRAWN BY	MW	CHECKED	JD		
DATE	01-13-23	APPROVED	JD		

REQUEST TO MAINTAIN CLOSURE
OF PORTION OF CAMBRIDGE AVE
BETWEEN CHERRYLAWN AND
FIRST ALLEY WEST

CITY OF DETROIT	
CITY ENGINEERING DIVISION	
SURVEY BUREAU	
JOB NO.	23-2
DRWG. NO.	X 540