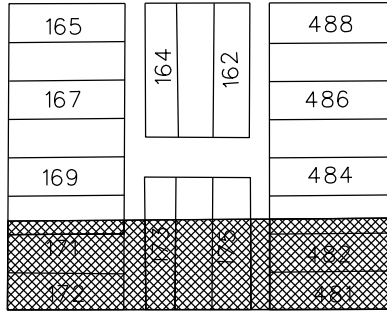


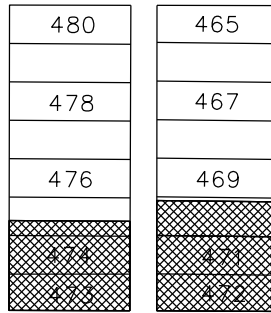


BRAINARD ST. 50 FT. WD.

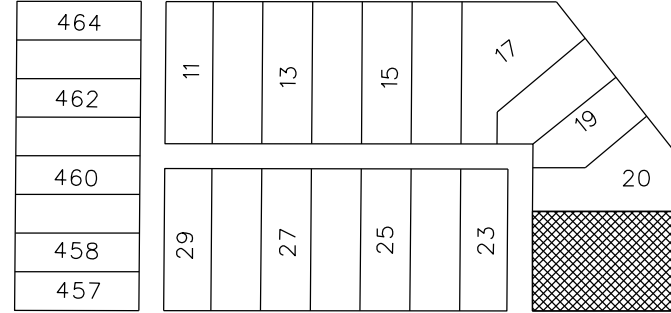
ROSA PARKS BLVD. (12TH) 54.84 FT. WD.



HARRISON AVE. 65 FT. WD.

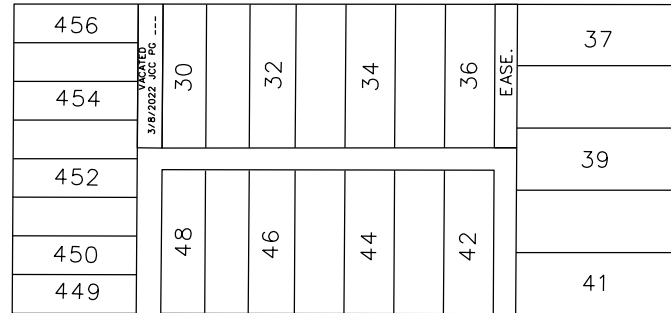
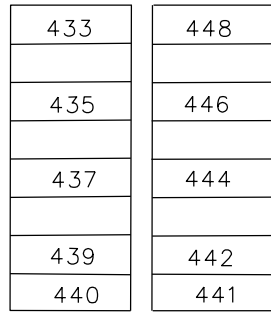
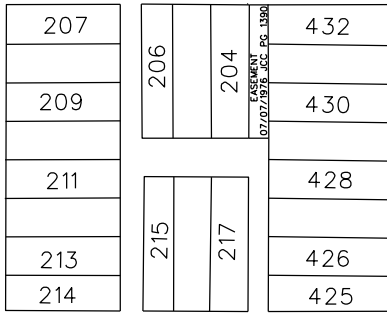


COCHRANE ST. 65 FT. WD.

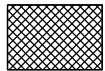


TRUMBULL AVE. 100 FT. WD.

M. L. KING JR. BLVD. 50 FT. WD.



SYCAMORE ST. 50 FT. WD.



- PUBLIC RIGHT OF WAY LAND DEDICATION

(FOR OFFICE USE ONLY)

CARTO 19 A & 29 C

REQUEST DEDICATION OF PUBLIC RIGHT OF WAY LAND OWNED BY THE CITY OF DETROIT FOR THE WIDENING OF MARTIN LUTHER KING JR. BLVD. FROM TRUMBULL ST. TO ROSA PARKS BLVD.

CITY OF DETROIT  
CITY ENGINEERING DIVISION  
SURVEY BUREAU

JOB NO. 23-36

DRWG. NO.

B					
A					
DESCRIPTION	DRWN	CHKD	APPD	DATE	
REVISIONS					
DRAWN BY	LC	CHECKED	MW		
DATE	03-29-2023	APPROVED	JD		