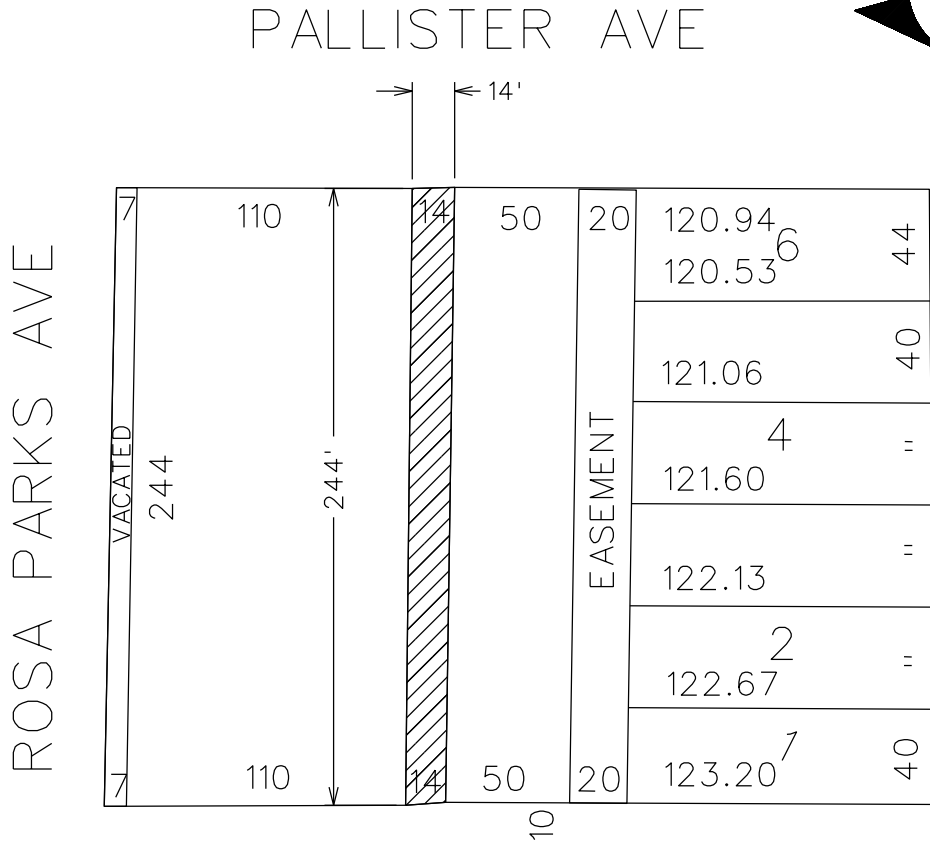
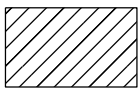
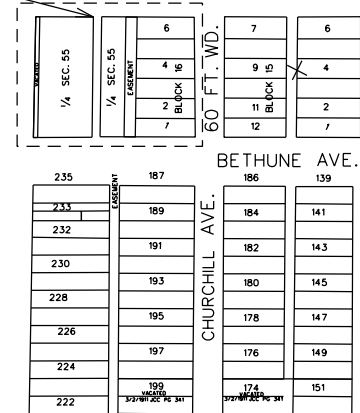


MAP-22-105



BETHUNE AVE

OUTRIGHT VACATION FOR EASEMENT



-OUTRIGHT VACATION FOR EASEMENT

(FOR OFFICE USE ONLY)

CARTO 31C

<b>B</b>					
<b>A</b>					
<b>DESCRIPTION</b>	<b>DRWN</b>	<b>CHKD</b>	<b>APPD</b>	<b>DATE</b>	
<b>REVISIONS</b>					
<b>DRAWN BY</b>	MW	<b>CHECKED</b>	JD		
<b>DATE</b>	01-12-2023	<b>APPROVED</b>	JD		

REQUEST OUTRIGHT VACATION OF ALLEY WITH RESERVE OF A UTILITY EASEMENT OFF OF ROSA PARKS BETWEEN BETHUNE AND PALLISTER

**CITY OF DETROIT**  
**CITY ENGINEERING DIVISION**  
**SURVEY BUREAU**

**JOB NO.** 22-105

**DRWG. NO.**