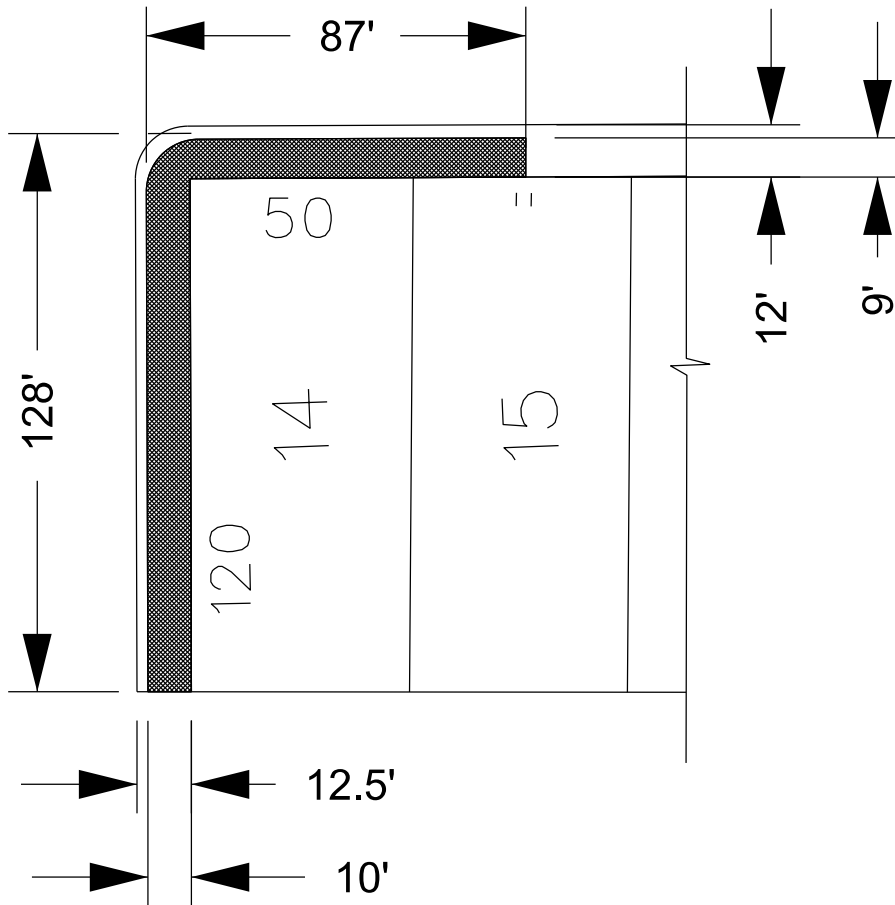




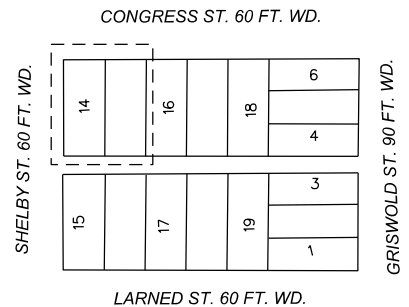
CONGRESS ST. 60 FT. WD.

SHELBY ST. 60 FT. WD.

GRISWOLD ST. 90 FT. WD.



PUBLIC ALLEY 20 FT. WD.



- REQUEST ENCROACHMENT
(Underground)

(FOR OFFICE USE ONLY)

CARTO 28 E

B					
A					
DESCRIPTION	DRWN	CHKD	APPD	DATE	
REVISIONS					
DRAWN BY	LC	CHECKED	JD		
DATE	09-27-2022	APPROVED	JD		

**REQUEST ENCROACHMENT
TO REGISTER EXISTENCE OF
EXISTING BASEMENT UNDER THE
SIDEWALK ON SHELBY STREET
AND CONGRESS**

CITY OF DETROIT CITY ENGINEERING DIVISION SURVEY BUREAU	
JOB NO.	22-79
DRWG. NO.	