



CITY OF DETROIT
DEPARTMENT OF PUBLIC WORKS
CITY ENGINEERING DIVISION

COLEMAN A. YOUNG MUNICIPAL CENTER
2 WOODWARD AVE. SUITE 601
DETROIT, MICHIGAN 48226
PHONE: (313) 224-3949 TTY: 711
WWW.DETROITMI.GOV

To: Clerk's Office
From: The Department of Public Works
City Engineering Division
MapsandRecordsBureau@DetroitMI.Gov
(313) 224-3970

Petitioner:
Library Street Collective
Represented by Giffels Webster
28 W Adams, Suite 1200
Detroit, MI, 48226

On behalf of the above-mentioned petitioner the Department of Public Works: City Engineering Division is submitting a petition request for the below mentioned action. The petitioner has received a project consultation from the Department of Public Works: City Engineering Division and has been advised the following:

Type of action recommended:

Petition to encroach into the utility easement, first east of McClellan Avenue, bounded by Agnes Avenue and Jefferson Avenue for the purpose of installing drainage lines.

Jered Dean
Manager II
Department of Public Works
City Engineering Division
313-224-3985



July 6, 2022

**Honorable Detroit City Council
C/o Detroit City Clerk
2 Woodward Avenue
200 Coleman A. Young Municipal Center
Detroit, Michigan 48226**

RE: Giffels Webster - Request for utility easements for proposed storm sewer and sanitary sewer connections.

Giffels Webster, 28 W. Adams, Suite 1200, Detroit, Michigan 48226 on behalf of the Library Street Collective located at 1260 Library Street Detroit, Michigan 48226. Respectfully requests the following utility easements within the vacated alley.

The requested right-of-way easements are located within the block bounded by Agnes Street (50 feet wide), McClellan Avenue (60 feet wide), the public alley (20 feet wide), and Parkview Ave.

- Proposed sanitary sewer utility easement in vacated alley beginning 83.0 feet south of the southern Agnes Street right-of-way line and extending 6.0 feet further south.
- Proposed storm sewer utility easement in vacated alley beginning 119.6 feet south of the southern Agnes Street right-of-way line and extending 5.7 feet further south.
- Proposed sanitary sewer utility easement in vacated alley beginning 125.3 feet south of the southern Agnes Street right-of-way line and extending 5.6 feet further south.
- Proposed sanitary sewer utility easement in vacated alley beginning 147.9 feet south of the southern Agnes Street right-of-way line and extending 25.8 feet further south.
- Proposed storm sewer utility easement in vacated alley beginning 269.5 feet south of the southern Agnes Street right-of-way line and extending 10.3 feet further south.

The requested encroachment will neither impede pedestrian and vehicular traffic, nor will it interfere with the maintenance of the public rights-of-way, including utility company and Fire and Police Department access. We will be working with the City of Detroit's Department of Public Works – Civil Engineering Division, and all stakeholders to achieve the requested utility easements that are satisfactory to all interested parties.

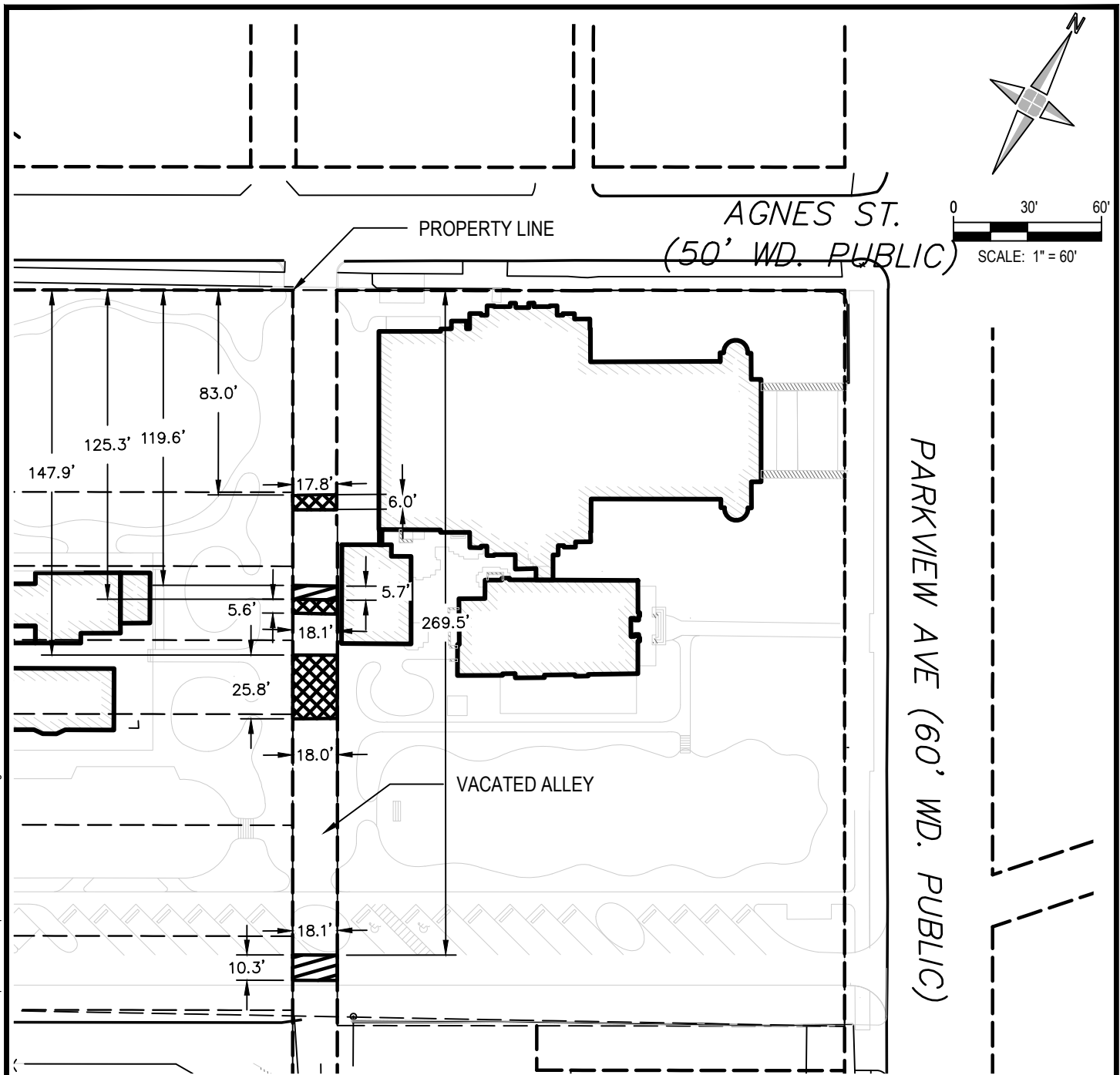
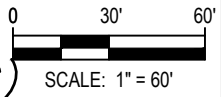
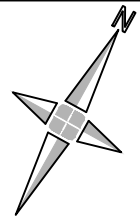
Limits of the requested encroachments can be found in the attachment, enclosed herein.

Giffels Webster has been asked to facilitate the requested encroachments. If you should have any questions, please do not hesitate to contact me at (P) 313.962.4442 x114, (M) 508.654.7845 or levans@giffelswebster.com.

Respectfully,

A handwritten signature in cursive script, appearing to read "Leon Evans".

Leon Evans, PE
Project Manager



PARK VIEW AVE (60' WD. PUBLIC)

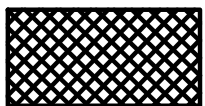
PROPERTY LINE

AGNES ST.
(50' WD. PUBLIC)

VACATED ALLEY



PROPOSED STORM SEWER UTILITY EASEMENT



PROPOSED SANITARY SEWER UTILITY EASEMENT



Know what's below.
Call before you dig.

THE SHEPHERD ARTS CAMPUS

CITY OF DETROIT, WAYNE COUNTY, MICHIGAN

ROW MODIFICATION



28 West Adams Road
Suite 1200
Detroit, MI 48226
p (313) 962-4442
f (313) 962-5068
www.giffelswebster.com

Executive: MGD
Manager: LE
Designer: JA
Quality Control: AG

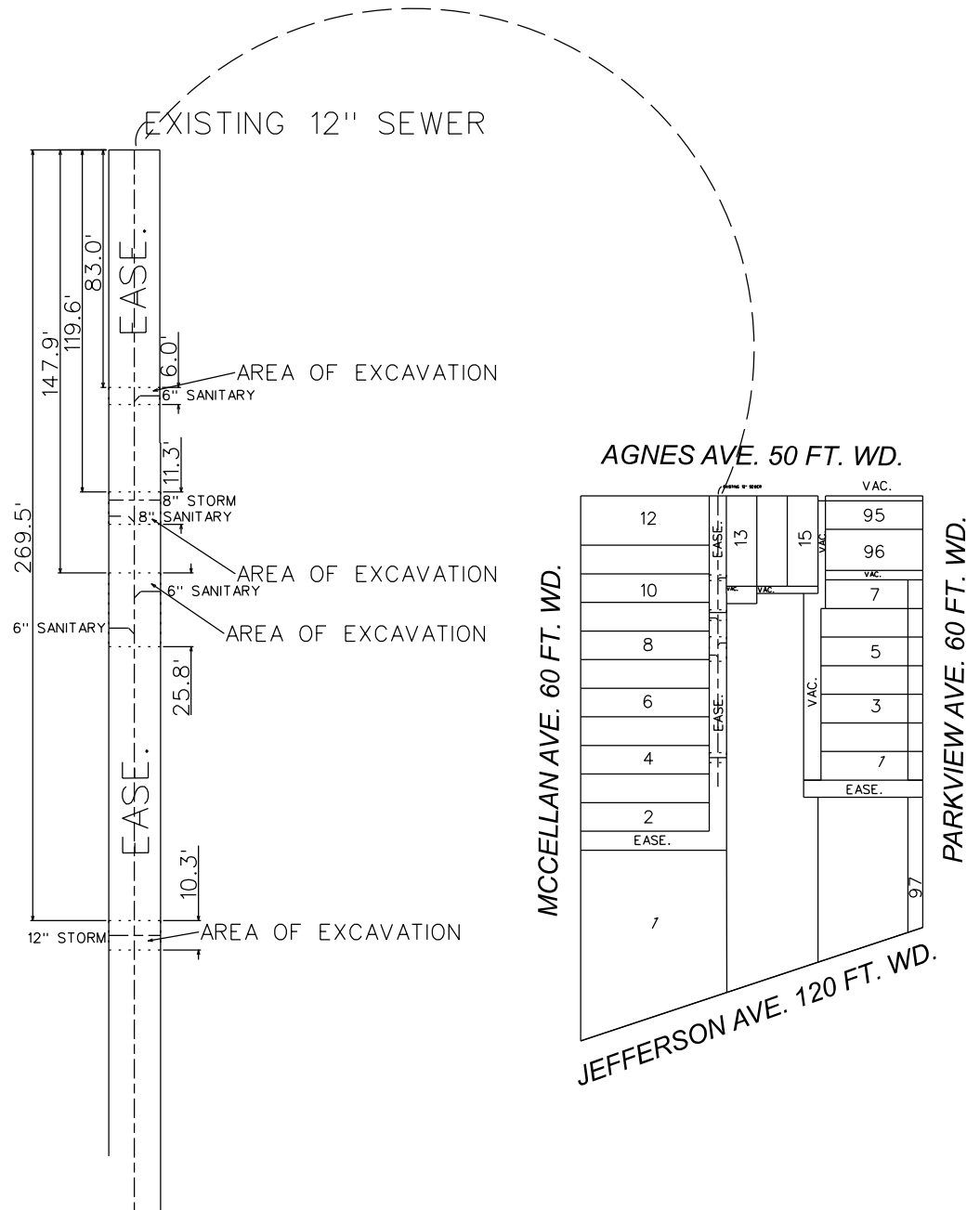
Developed For:
Library Street Collective
1260 Library Street
Detroit, Michigan 48226
313.600.7443

DATE:	ISSUE:
07-06-2022	Encroachment Petition

Date: 07.06.2022
Scale: 1"=60'
Sheet: Exhibit
Project: 19881-01D

Copyright © 2022 Giffels Webster.
No reproduction shall be made
without the prior written consent of
Giffels Webster.

V:\19881-01D Library Street Collective Campus Design\Permis\ROW Modification\GW Petition Materials\Shepherd Arts Campus ROW Easement Exhibit.dwg



- - NEW 8" DIA. STORM LINE
- - NEW 12" DIA. STORM LINE
- - NEW 6" DIA. SANITARY LINE
- - NEW 8" DIA. SANITARY LINE

(FOR OFFICE USE ONLY)

CARTO 54 C

B					
A					
DESCRIPTION	DRWN	CHKD	APPD	DATE	
REVISIONS					
DRAWN BY	MC	CHECKED			
DATE	07-25-22	APPROVED		JD	

**REQUEST FOR UTILITY EASEMENTS
FOR PROPOSED STORM AND SANITARY
SEWER CONNECTIONS**

**CITY OF DETROIT
CITY ENGINEERING DIVISION
SURVEY BUREAU**

JOB NO.
DRWG. NO. MAP-22-49