

MAP-22-45



- REQUESTED VACATION



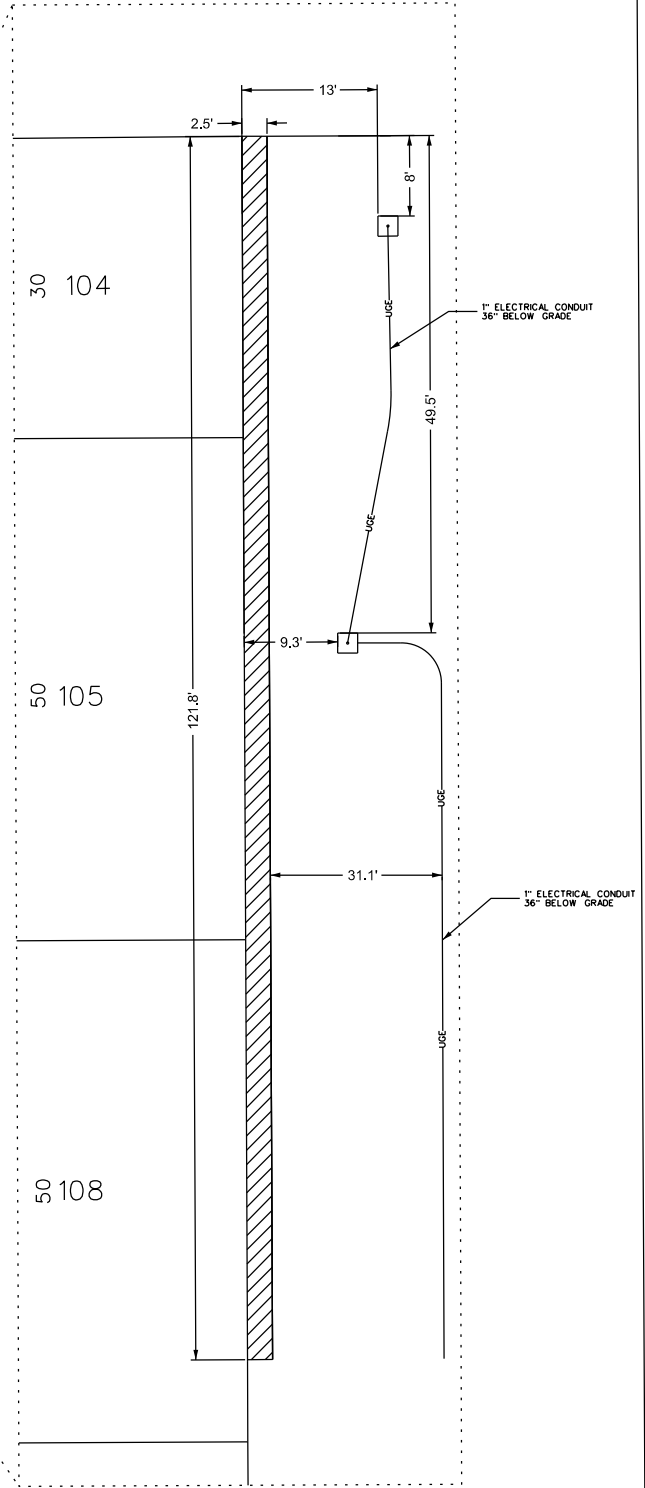
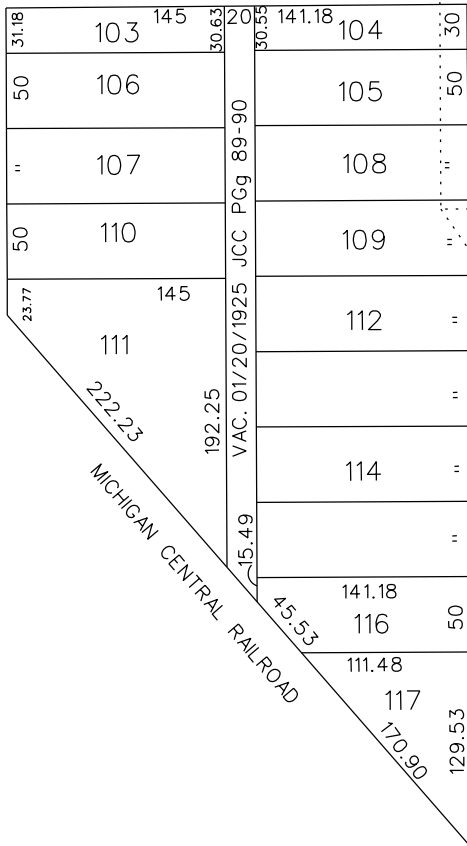
2' - NEW LIGHT POLE BASE TYP.



14TH AVE. 80 FT. WD.

BAGLEY AVE. 80 FT. WD.

WABASH ST. 60 FT. WD.



(FOR OFFICE USE ONLY)

CARTO 18 A

B					
A					
DESCRIPTION	DRWN	CHKD	APPD	DATE	
REVISIONS					
DRAWN BY	MC	CHECKED			
DATE	08-18-2022	APPROVED	JD		

REQUESTED VACATION TO EASEMENT 2.5' OF THE WESTERLY PORTION OF WABASH ST (60 FT. WD.) APPROX. 121.8' SOUTH OF THE SOUTHERLY BAGLEY AVE. (80 FT. WD.) ROW LINE. ALSO, ABOVE GRADE ENCROACHMENT INTO THE WABASH ROW FOR NEW LIGHT POLES.

CITY OF DETROIT	
CITY ENGINEERING DIVISION	
SURVEY BUREAU	
JOB NO.	22-45
DRWG. NO.	