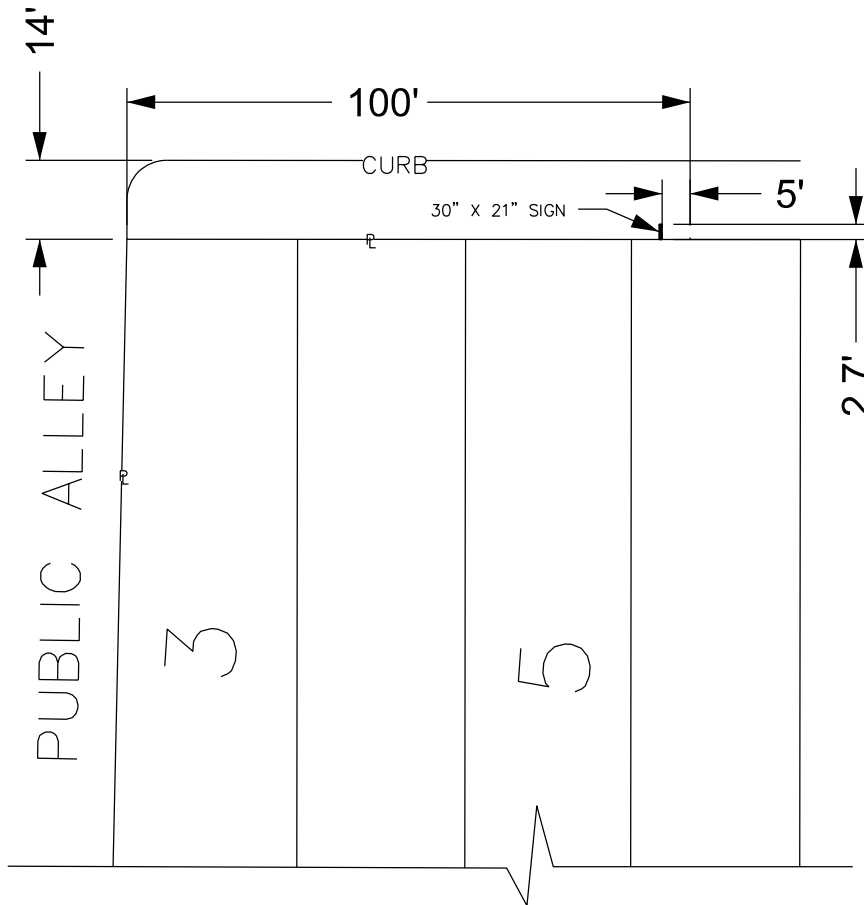




FOREST AVE. 70 FT. WD.

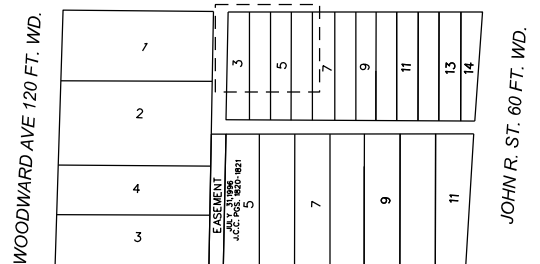
WOODWARD AVE 120 FT. WD.



JOHN R. ST. 60 FT. WD.

GARFIELD AVE. 60 FT. WD.

FOREST AVE. 70 FT. WD.



GARFIELD AVE. 60 FT. WD.

 - REQUEST ENCROACHMENT
(Illuminated sign, 11.33' above ground)

(FOR OFFICE USE ONLY)

CARTO 30 F

B					
A					
DESCRIPTION		DRWN	CHKD	APPD	DATE
REVISIONS					
DRAWN BY	LC	CHECKED		JD	
DATE	10-27-2022	APPROVED		JD	

REQUEST ENCROACHMENT
INTO E. FOREST AVE.
FOR ABOVE GROUND SIGN

CITY OF DETROIT CITY ENGINEERING DIVISION SURVEY BUREAU	
JOB NO.	22-91
DRWG. NO.	