

 - PREVIOUS DEDICATIONS (CURRENT CONDITIONS)

(FOR OFFICE USE ONLY)

CARTO 19 (E, & F)

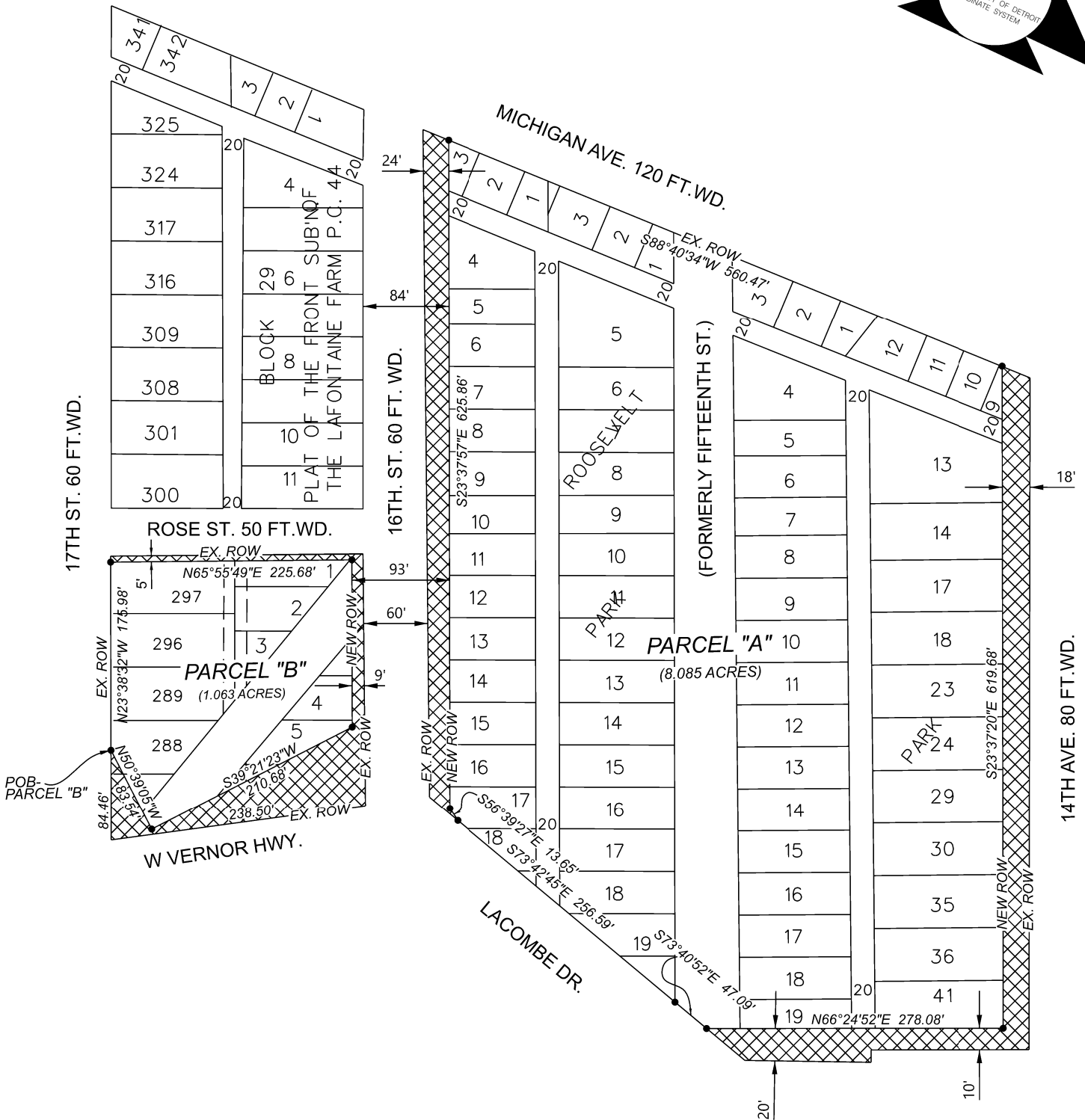
B					
A					
DESCRIPTION		DRWN	CHKD	APPD	DATE
REVISIONS					
DRAWN BY	KJ		CHECKED		
DATE	04-11-22		APPROVED JD		

REQUEST DEDICATION TO RIGHT OF WAY
PARTS OF 17TH ST, VERNOR HWY, 16TH ST,
DALZELLE ST, AND 14TH ST, SOUTH OF
MICHIGAN AVENUE
AND ADJACENT TO ROOSEVELT PARK.

CITY OF DETROIT
CITY ENGINEERING DIVISION
SURVEY BUREAU

JOB NO. 01-02

DRWG. NO.



- PROPOSED DEDICATIONS

(FOR OFFICE USE ONLY)

CARTO 19 (E, & F)

B					
A	ADDED PARCEL RESTORATIONS	KJ	JD	3/31/22	
DESCRIPTION		DRWN	CHKD	APPD	DATE
REVISIONS					
DRAWN BY	SA	CHECKED			
DATE	02-24-2022	APPROVED		JD	

REQUEST DEDICATION TO RIGHT OF WAY
 PARTS OF 17TH ST, VERNOR HWY, 16TH ST,
 DALZELLE ST, AND 14TH ST, SOUTH OF MICHIGAN
 AVENUE
 AND ADJACENT TO ROOSEVELT PARK.

CITY OF DETROIT	
CITY ENGINEERING DIVISION	
SURVEY BUREAU	
JOB NO.	01-03
DRWG. NO.	