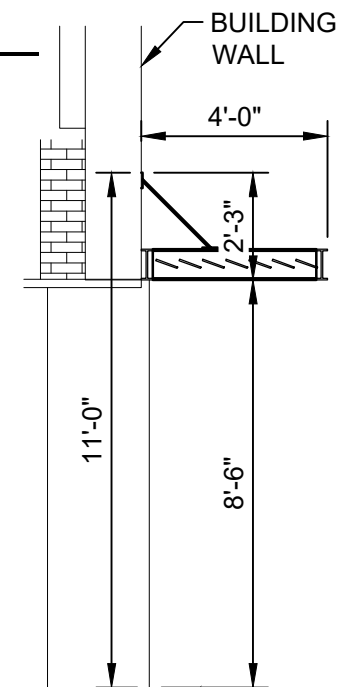
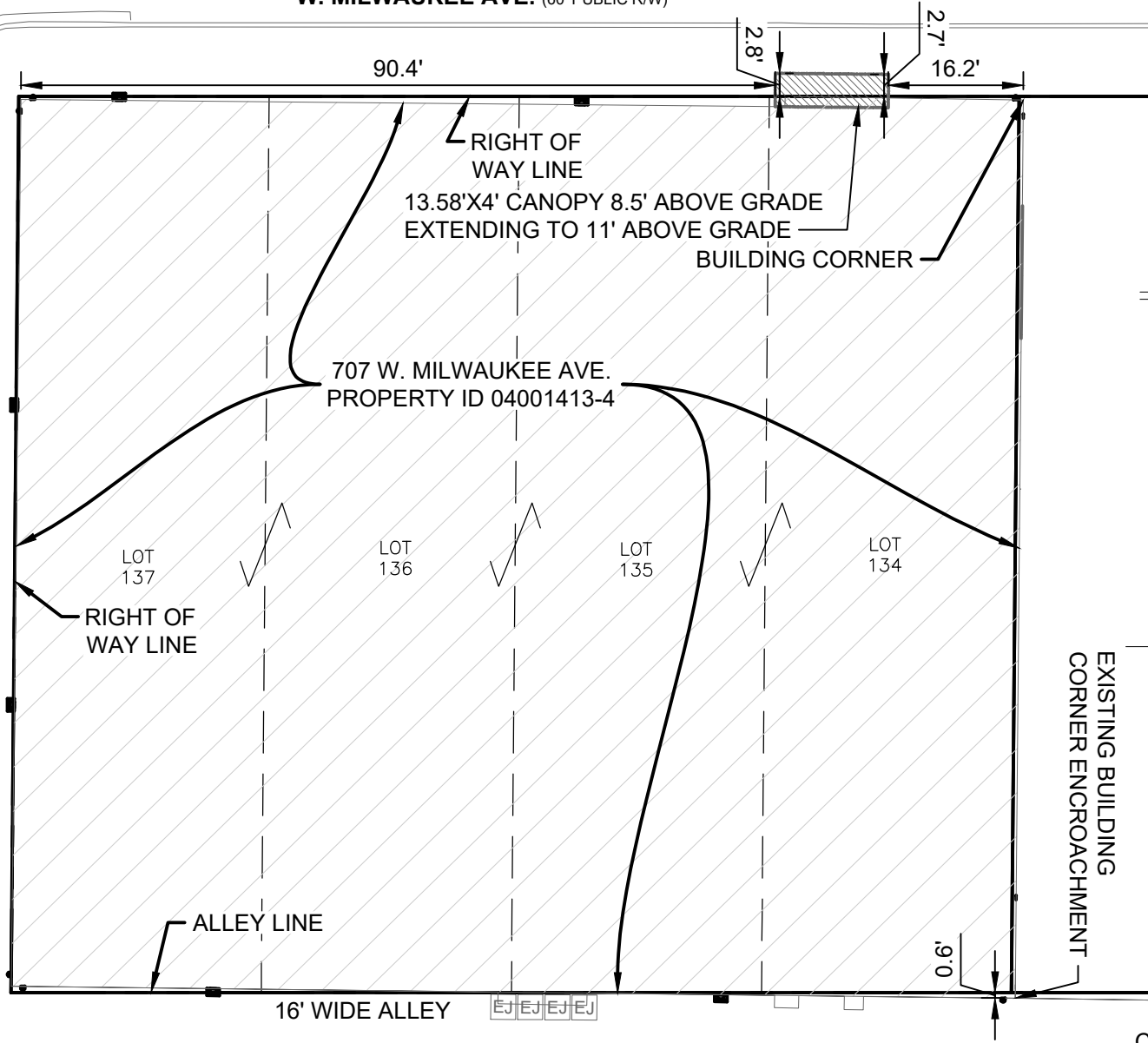


2/10/2022 2:40:01 PM - ENCROACHMENT PLAN.DWG - BUSHAW, RICHARD

3RD ST. (60' PUBLIC RW)

W. MILWAUKEE AVE. (60' PUBLIC RW)

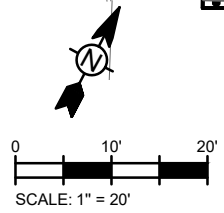


SECTION VIEW
CANOPY
NTS

ALL DIMENSIONS ARE MEASURED ALONG THE FACE OF THE BUILDING AND INDICATE PLAN LOCATIONS

EXISTING BUILDING CORNER ENCROACHMENT

CANOPY ENCROACHMENT



CARTO 31 E



TETRA TECH
www.tetrattech.com
615 GRISWOLD ST - SUITE 1000B
DETROIT, MICHIGAN 48226
TEL: (313) 964-0790

DETROIT WAYNE INTEGRATED HEALTH NETWORK
MILWAUKEE CRISIS CENTER
707 W. MILWAUKEE AVE, DETROIT MI 48202
**MULTIPLE ENCROACHMENTS IN THE BLOCK
BOUNDED BY W. MILWAUKEE AVE., 3RD ST.,
W. BALTIMORE AVE. AND 2ND AVE.**

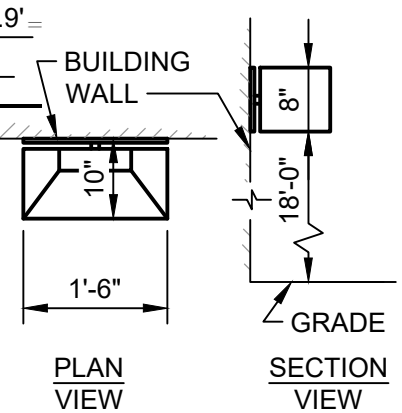
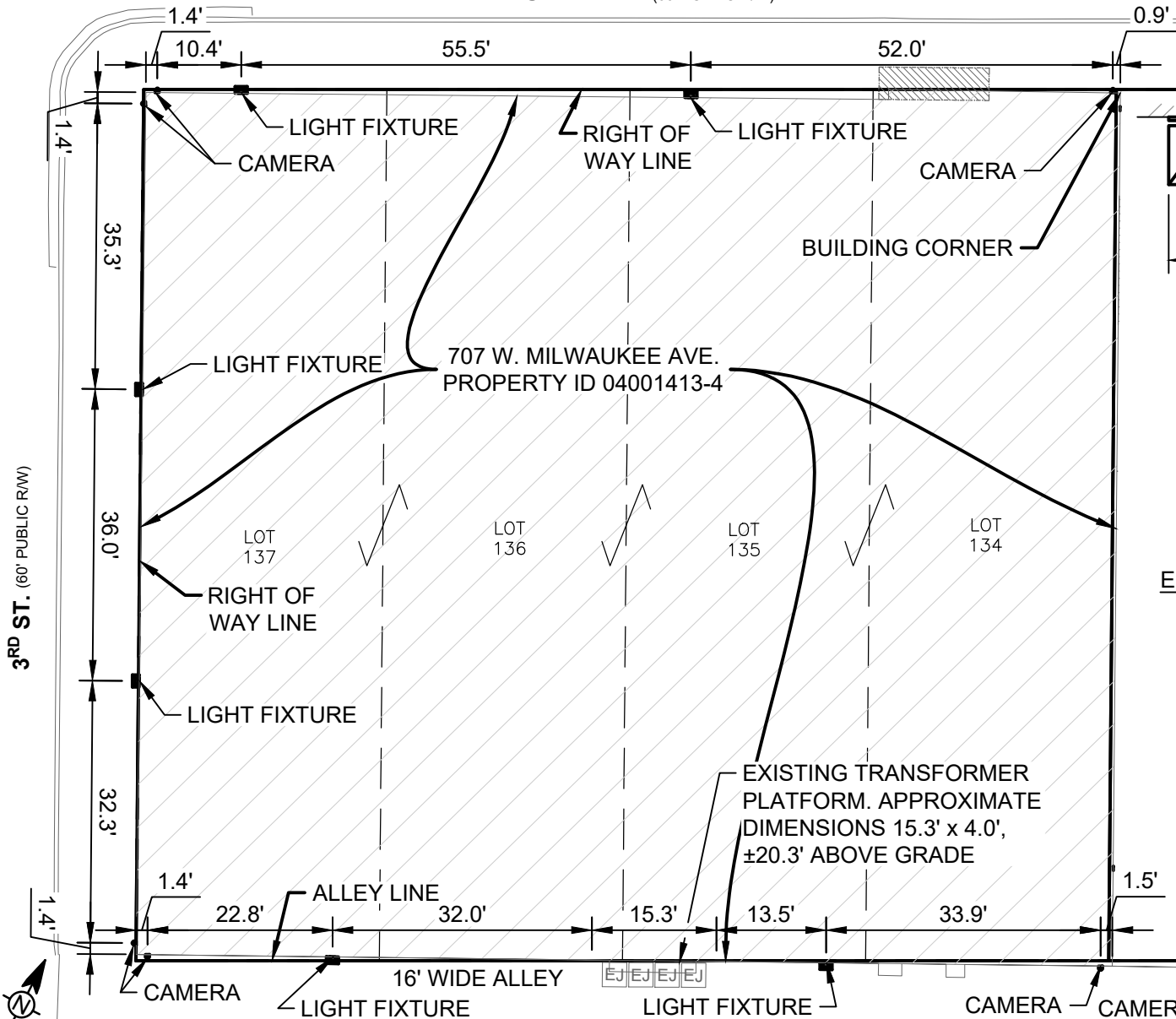
PROJ:	123-274586-22002
DATE:	02-07-22
DESN:	
Sheet	1

Bar Measures 1 inch

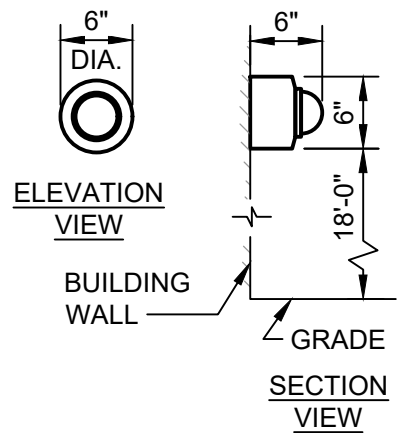
Copyright: Tetra Tech

2/10/2022 2:40:03 PM - ENCROACHMENT PLAN.DWG - BUSHAW, RICHARD

W. MILWAUKEE AVE. (60' PUBLIC R/W)

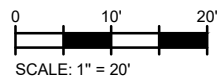


LIGHT FIXTURE
NTS



CAMERA
NTS

ALL DIMENSIONS ARE MEASURED ALONG THE FACE OF THE BUILDING AND INDICATE PLAN LOCATIONS



CARTO 31 E



Tt TETRA TECH
www.tetrattech.com
615 GRISWOLD ST - SUITE 1000B
DETROIT, MICHIGAN 48226
TEL: (313) 964-0790

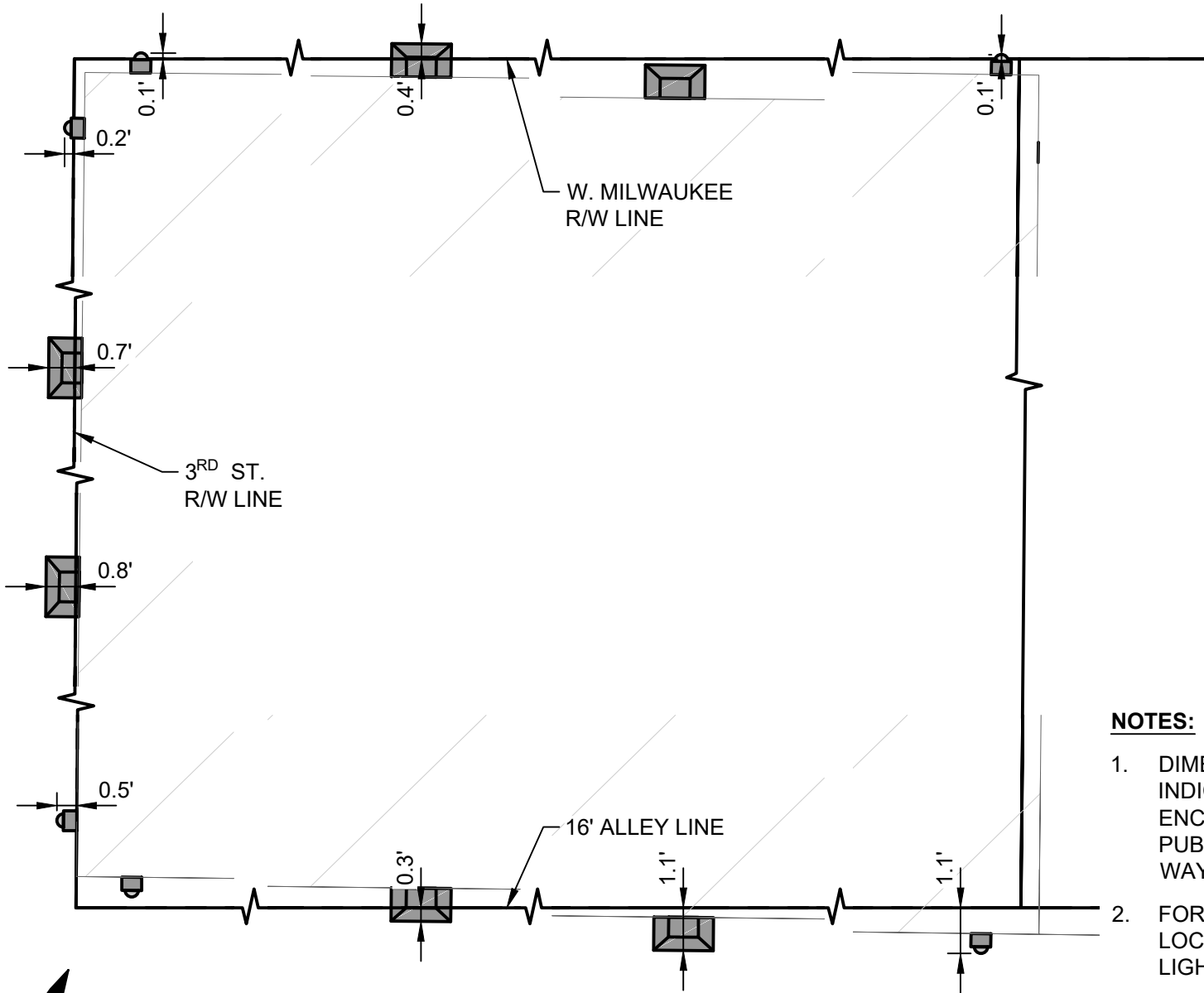
DETROIT WAYNE INTEGRATED HEALTH NETWORK
MILWAUKEE CRISIS CENTER
707 W. MILWAUKEE AVE, DETROIT MI 48202
**MULTIPLE ENCROACHMENTS IN THE BLOCK
BOUNDED BY W. MILWAUKEE AVE., 3RD ST.,
W. BALTIMORE AVE. AND 2ND AVE.**

PROJ: 123-274586-22002
DATE: 02-07-22
DESN:
Sheet
2

Bar Measures 1 inch

Copyright: Tetra Tech

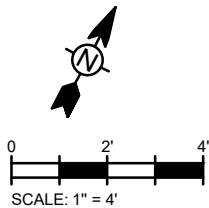
2/10/2022 2:40:10 PM - ENCROACHMENT PLAN.DWG - BUSHAW, RICHARD



NOTES:

1. DIMENSIONS ON THIS PLAN INDICATE THE EXTENT OF ENCROACHMENT INTO THE PUBLIC ALLEY AND RIGHT OF WAYS.
2. FOR TYPICAL DIMENSIONS AND LOCATIONS OF CAMERAS AND LIGHT FIXTURES SEE SHEET 2.

CAMERA & LIGHT ENCROACHMENTS



CARTO 31 E



TETRA TECH

www.tetrattech.com

615 GRISWOLD ST - SUITE 1000B
 DETROIT, MICHIGAN 48226
 TEL: (313) 964-0790

DETROIT WAYNE INTEGRATED HEALTH NETWORK

MILWAUKEE CRISIS CENTER
 707 W. MILWAUKEE AVE, DETROIT MI 48202

**MULTIPLE ENCROACHMENTS IN THE BLOCK
 BOUNDED BY W. MILWAUKEE AVE., 3RD ST.,
 W. BALTIMORE AVE. AND 2ND AVE.**

PROJ: 123-274586-22002

DATE: 02-07-22

DESN:

Sheet

3

Bar Measures 1 inch

Copyright: Tetra Tech