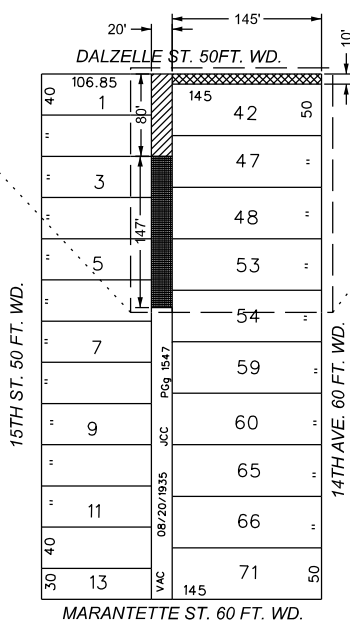
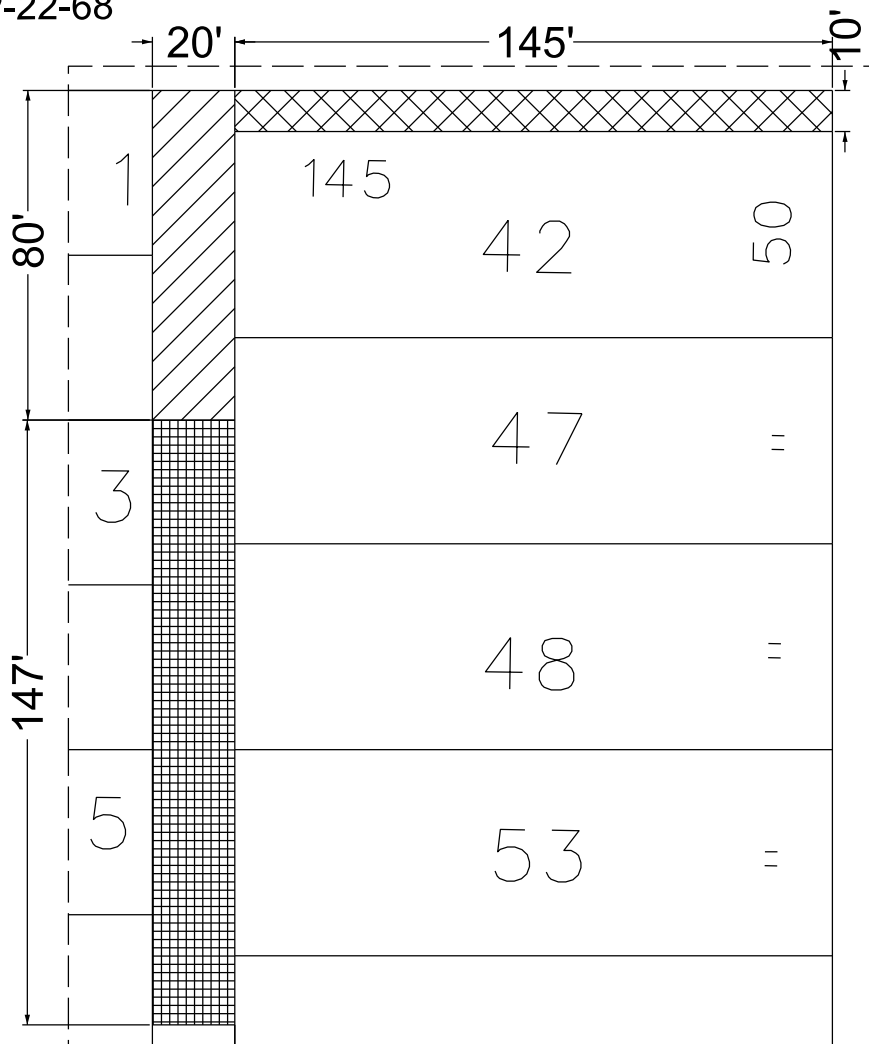


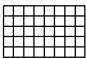


PETITION ID MAP-22-68



-  - 10' VACATION OF DALZELLE R.O.W.
-  - 80' VACATION OF 20' WD. ALLEY
-  - OUTRIGHT VACATION OF PREVIOUS 147' EASEMENT

B					
A					
DESCRIPTION	DRWN	CHKD	APPD	DATE	
REVISIONS					
DRAWN BY	MC	CHECKED			
DATE	08-19-2022	APPROVED	JD		

REQUEST TO OUTRIGHT VACATE THE SOUTHERLY 10' OF DALZELLE ST R.O.W. ADJACENT TO LOT 42 OF THE SUB. OF GODFROY FARM. ALSO THE REMAINING 80' OF THE NORTH SOUTH ALLEY NOT PREVIOUSLY VACATED OR CONVERTED TO EASEMENT. LASTLY, OUTRIGHT VACATE THE 147' EASEMENT IN THE 20' WD. ALLEY CREATED BY 9-16-1969 JCC PGg 2354.

CITY OF DETROIT
 CITY ENGINEERING DIVISION
 SURVEY BUREAU
CARTO 18 A & 19 F
 (FOR OFFICE USE ONLY)