



CITY OF DETROIT
DEPARTMENT OF PUBLIC WORKS
CITY ENGINEERING DIVISION

COLEMAN A. YOUNG MUNICIPAL CENTER
2 WOODWARD AVE. SUITE 601
DETROIT, MICHIGAN 48226
PHONE: (313) 224-3949 TTY: 711
WWW.DETROITMI.GOV

To: Clerk's Office
From: The Department of Public Works
City Engineering Division
MapsandRecordsBureau@DetroitMI.Gov
(313) 224-3970

Petitioner:
1375 Michigan Properties LLC
2615 West Twelve Mile
Berkley, MI, 48072

On behalf of the above-mentioned petitioner the Department of Public Works: City Engineering Division is submitting a petition request for the below mentioned action. The petitioner has received a project consultation from the Department of Public Works: City Engineering Division and has been advised the following:

Type of action recommended:

Petition to encroach into the sidewalk on the north side of Leverette Street, adjacent to the property commonly known as 1375 Michigan Avenue, for the purpose of installing a wrought iron fence.

Jered Dean
Manager II
Department of Public Works
City Engineering Division
313-224-3985



PARKSTONE
DEVELOPMENT PARTNERS

July 7, 2022

Honorable Detroit City Council
C/o Detroit City Clerk
2 Woodward Avenue
200 Coleman A. Young Municipal Center
Detroit, MI 48226

RE: Request for encroachment into Leverette Street

Dear Honorable Council Members,

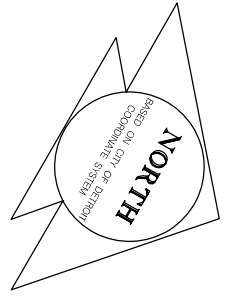
On behalf of 1375 Michigan Properties LLC and CH Corktown LLC, Parkstone Development Partners would like to request an encroachment into the Leverette Street right-of-way at 1375 Michigan within the block bounded by Michigan, Leverette, and Eighth. The purpose of the request is to allow for the approval of an existing fence encroachment along Leverette.

Please feel free to contact me with any questions at janelle@parkstonedevelopment.com or at 313-636-1518. Thank you for your time and attention toward this matter.

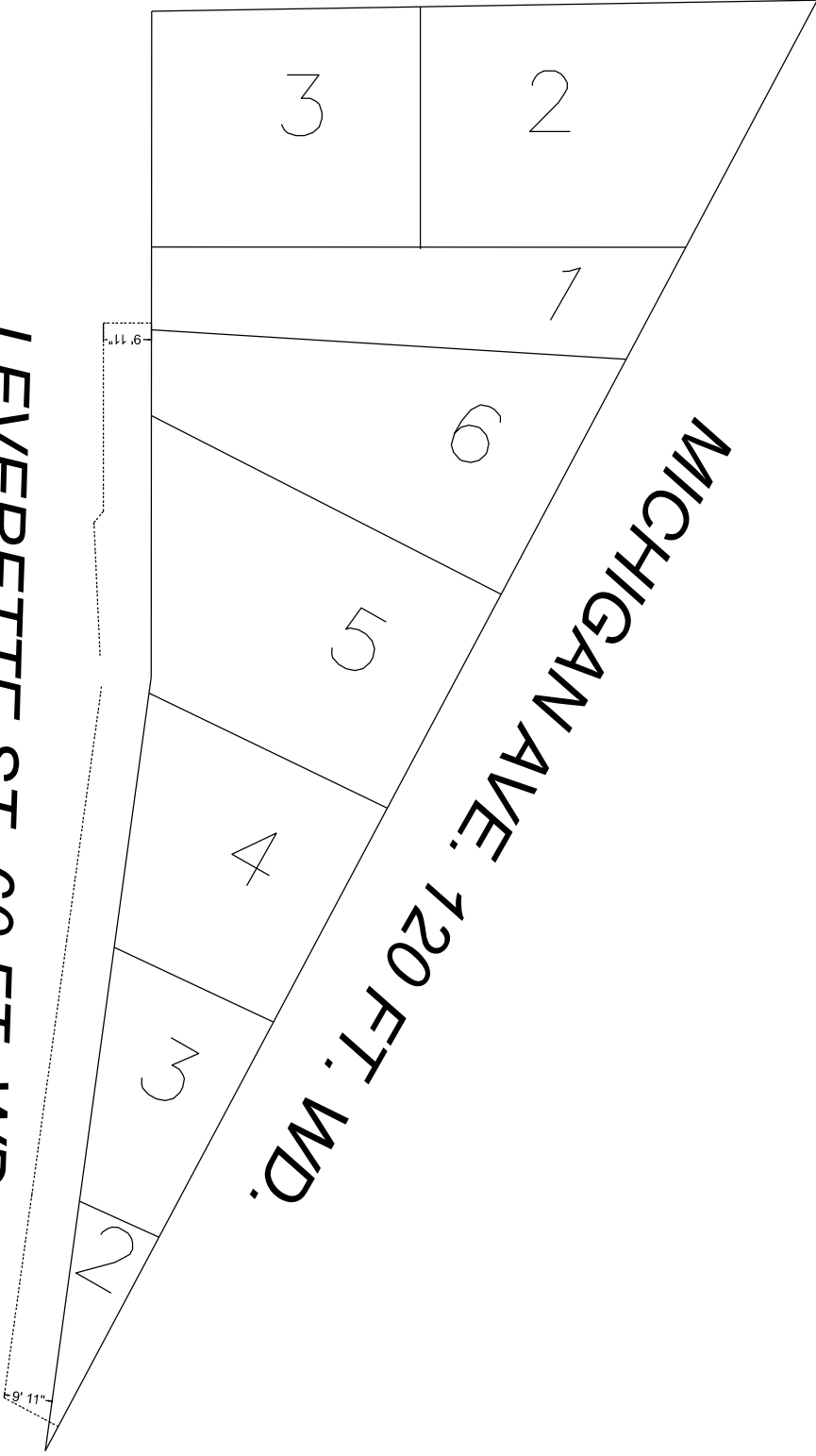
Respectfully,

Janelle Bulat, Project Manager
Parkstone Development Partners

PETITION ID MAP-22-51
 PARKSTONE DEVELOPMENT PARTNERS
 28 W. ADAMS AVE. SUITE 1300
 DETROIT, MICHIGAN 48226
 JANELLE BULAT
 PHONE NO. (313) 636-1518
 JANELLE@PARKSTONEDEVELOPMENT.COM



8TH ST. 50 FT. WD.



- EXISTING FENCE

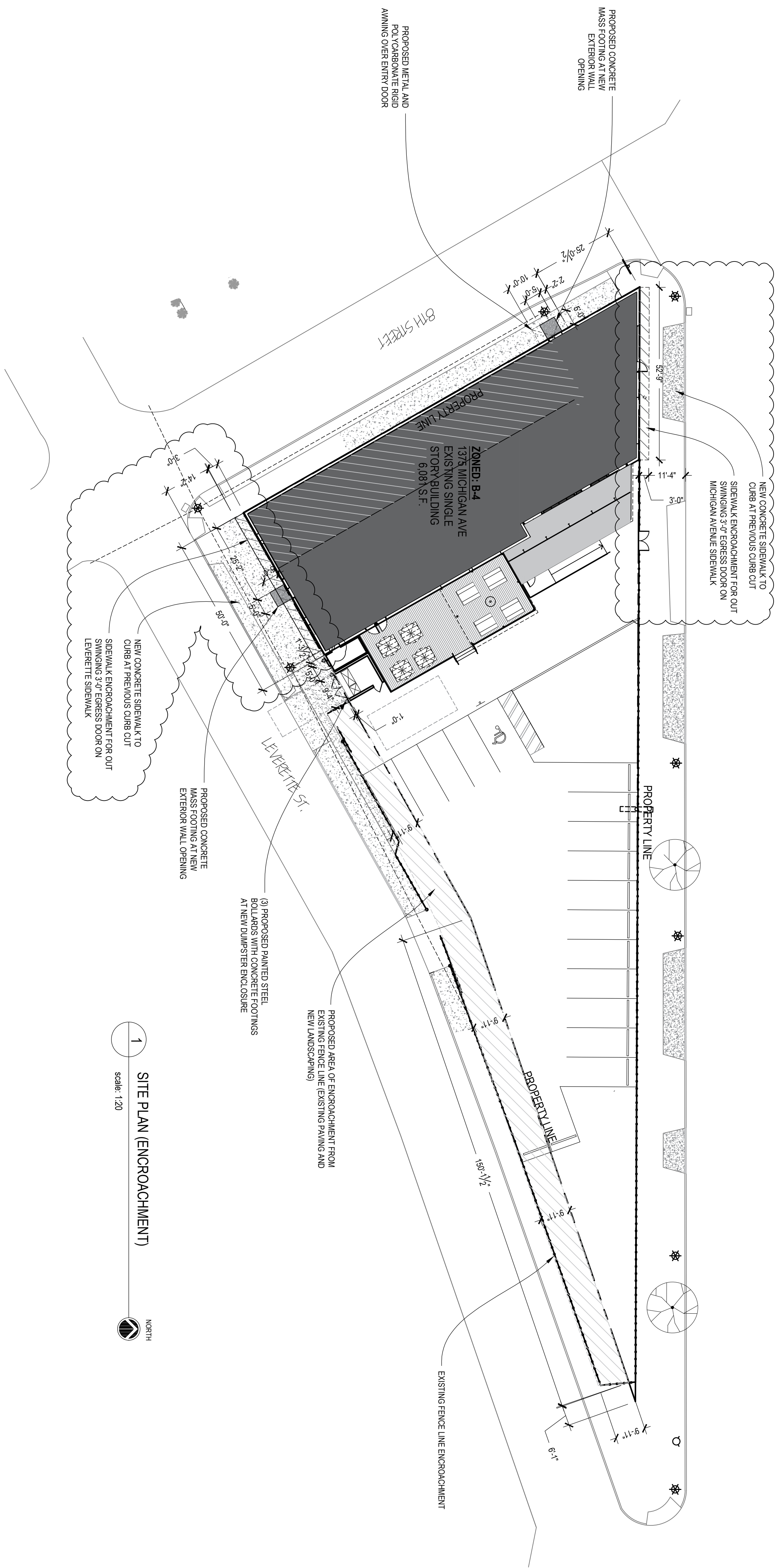
LEVERETTE ST. 60 FT. WD.

REQUEST ENCROACHMENT
 INTO ROW OF LEVERETTE ST (60 FT. WD.)
 BETWEEN MICHIGAN AVE. (120 FT. WD.) &
 8TH ST. (50 FT. WD.) FOR EXISTING FENCE

B				
A				
	DESCRIPTION	DRWN	CHKD	APPD
				DATE
	DRAWN BY	MC	CHECKED	
	DATE	07-12-22	APPROVED	JD

CITY OF DETROIT
 CITY ENGINEERING DIVISION
 SURVEY BUREAU

JOB NO.
 DRWG. NO. 22-51



1 SITE PLAN (ENCROACHMENT)
scale: 1/20



Project: **RON ANDROMAN**
architects et al.
275 E. Frank St. Birmingham MI 48009
o) 248.723.5790 f) 248.723.5795

DETROIT AXE
NEW BAR AND AXE THROWING VENUE
1375 MICHIGAN AVE. DETROIT MI, 48226

Issue Date: 12/17/2020
ENCROACHMENT

STATE OF MICHIGAN
ROMAN BONISLAWSKI
ARCHITECT
No. 37367
LICENSED ARCHITECT

Roman Bonislawski

Sheet Title:	SITE PLAN
Sheet Number:	SP-101