



CITY OF DETROIT  
DEPARTMENT OF PUBLIC WORKS  
CITY ENGINEERING DIVISION

COLEMAN A. YOUNG MUNICIPAL CENTER  
2 WOODWARD AVE. SUITE 601  
DETROIT, MICHIGAN 48226  
PHONE: (313) 224-3949 TTY: 711  
WWW.DETROITMI.GOV

---

To: Clerk's Office  
From: The Department of Public Works  
City Engineering Division  
MapsandRecordsBureau@DetroitMI.Gov  
(313) 224-3970

Petitioner:  
Department of Public Works  
City Engineering Division  
2 Woodward, Suite 601  
Detroit, MI, 48226

The Department of Public Works: City Engineering Division is submitting a petition request for the below mentioned action. The petitioner has received a project consultation from the Department of Public Works: City Engineering Division and has been advised the following:

Type of action recommended:

Petition to vacate, with reserve of a utility easement, East McNichols Road, between French Road and Conner Avenue.

Jered Dean  
Manager II  
Department of Public Works  
City Engineering Division  
313-224-3985

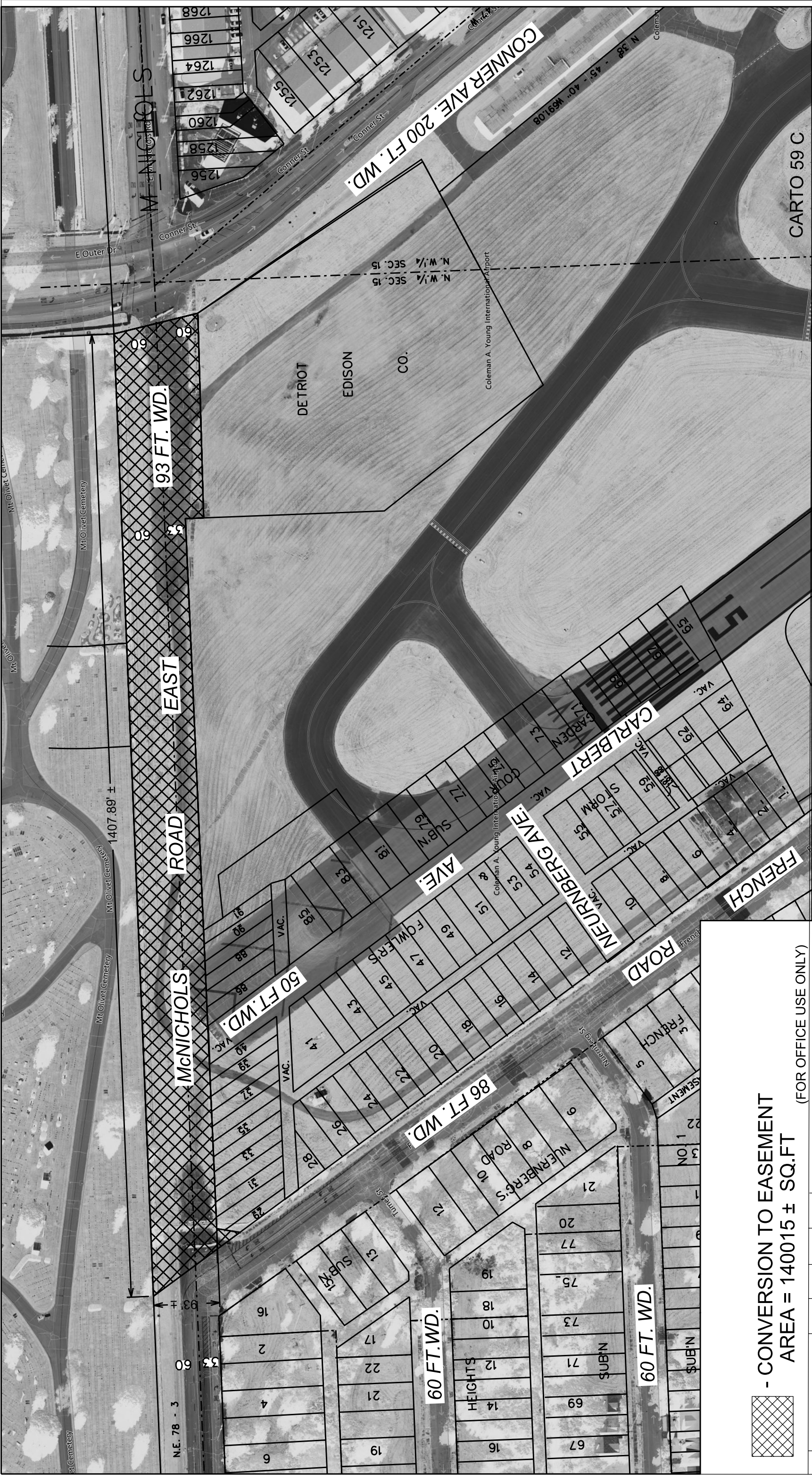
## LEGAL DESCRIPTION

### Vacated portion of McNichols

Land in the City of Detroit, Wayne County, MI being described as that part of Fractional Section 10 T 1 S R 12 E and of Fractional Section 15 T 1 S R 12 E, described as followed: Commencing from a point at the intersection of the Northeast corner of the Northwest  $\frac{1}{4}$  Section 15 T 1 S R 12 E of Wayne County, MI, and the southeast corner of the Southwest  $\frac{1}{4}$  of Section 10 T 1 S R 12 E of Wayne County MI, South 87 degrees 44 minutes 46 seconds West 60.95 feet to the **point of beginning**; thence south 13 degree 49 minutes 29second east 62.60 feet ; thence south 88 degree22 minutes 02 seconds west 299.25 feet ; thence north 02 degree 28 minutes 25 second west 26.74 feet; thence south 87 degree 36 minutes 45 seconds west 1038.82 feet; thence south 09 degree 09 minutes 03 second west 34.22 feet ; thence north 36 degree 27 minutes 41 second west 157.08 feet to the North line of McNichols Road ; thence north 87 degree 38 minutes 54 second east 1407.89 feet to the west line of Connor Avenue; thence south 13 degree 22 minutes 50 seconds 66.24 feet to point of beginning.

Containing 87,565 sq ft (2.01 Acre)





 - CONVERSION TO EASEMENT  
 AREA = 140015 ± SQ.FT  
 (FOR OFFICE USE ONLY)

**CONVERSION TO EASEMENT  
 PUBLIC STREET McNICHOLS RD.  
 FROM FRENCH RD. TO CONNER AVE.**

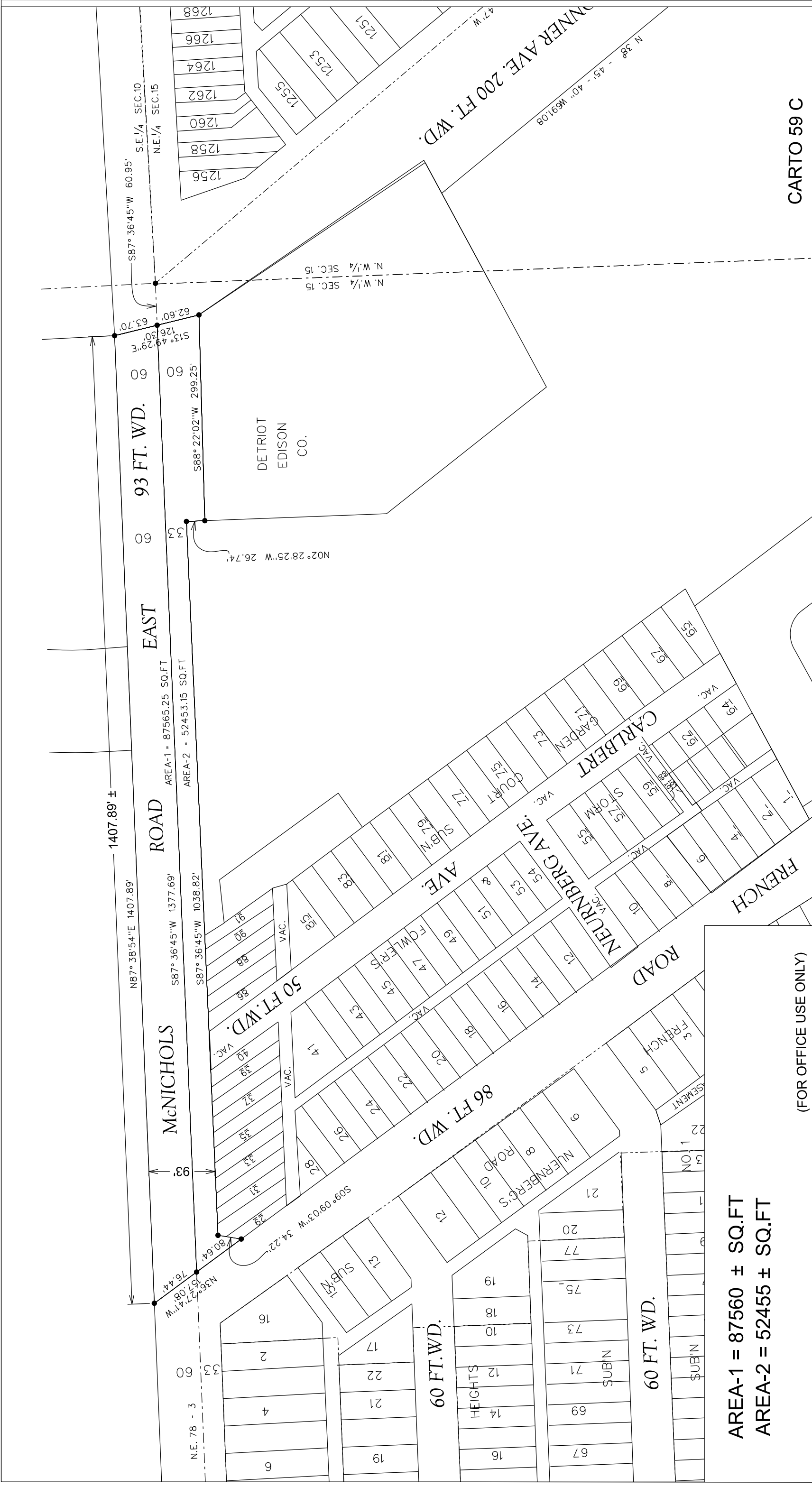
CITY OF DETROIT  
 CITY ENGINEERING DIVISION  
 SURVEY BUREAU  
 JOB NO. 01-02  
 DRWG. NO.

| B | DESCRIPTION | REVISIONS |      |           |
|---|-------------|-----------|------|-----------|
|   |             | DRWN      | CHKD | APPD DATE |
| A |             |           |      |           |

|            |    |          |    |
|------------|----|----------|----|
| DRAWN BY   | SA | CHECKED  | JD |
| 01-21-2022 |    | APPROVED |    |





CARTO 59 C

**CONVERSION TO EASEMENT  
PUBLIC STREET McNICHOLS RD.  
FROM FRENCH RD. TO CONNER AVE.**

CITY OF DETROIT  
CITY ENGINEERING DIVISION  
SURVEY BUREAU

JOB NO. 02-02  
DRWG. NO.

AREA-1 = 87560 ± SQ.FT  
AREA-2 = 52455 ± SQ.FT

(FOR OFFICE USE ONLY)

| DESCRIPTION | DRWN | CHKD | APPD | DATE |
|-------------|------|------|------|------|
| B           |      |      |      |      |
| A           |      |      |      |      |

| REVISIONS | DATE |
|-----------|------|
|           |      |

| DRAWN BY | CHECKED | JD |
|----------|---------|----|
| SA       |         | JD |

| DATE       | APPROVED |
|------------|----------|
| 01-21-2022 |          |