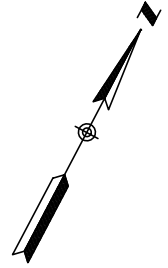


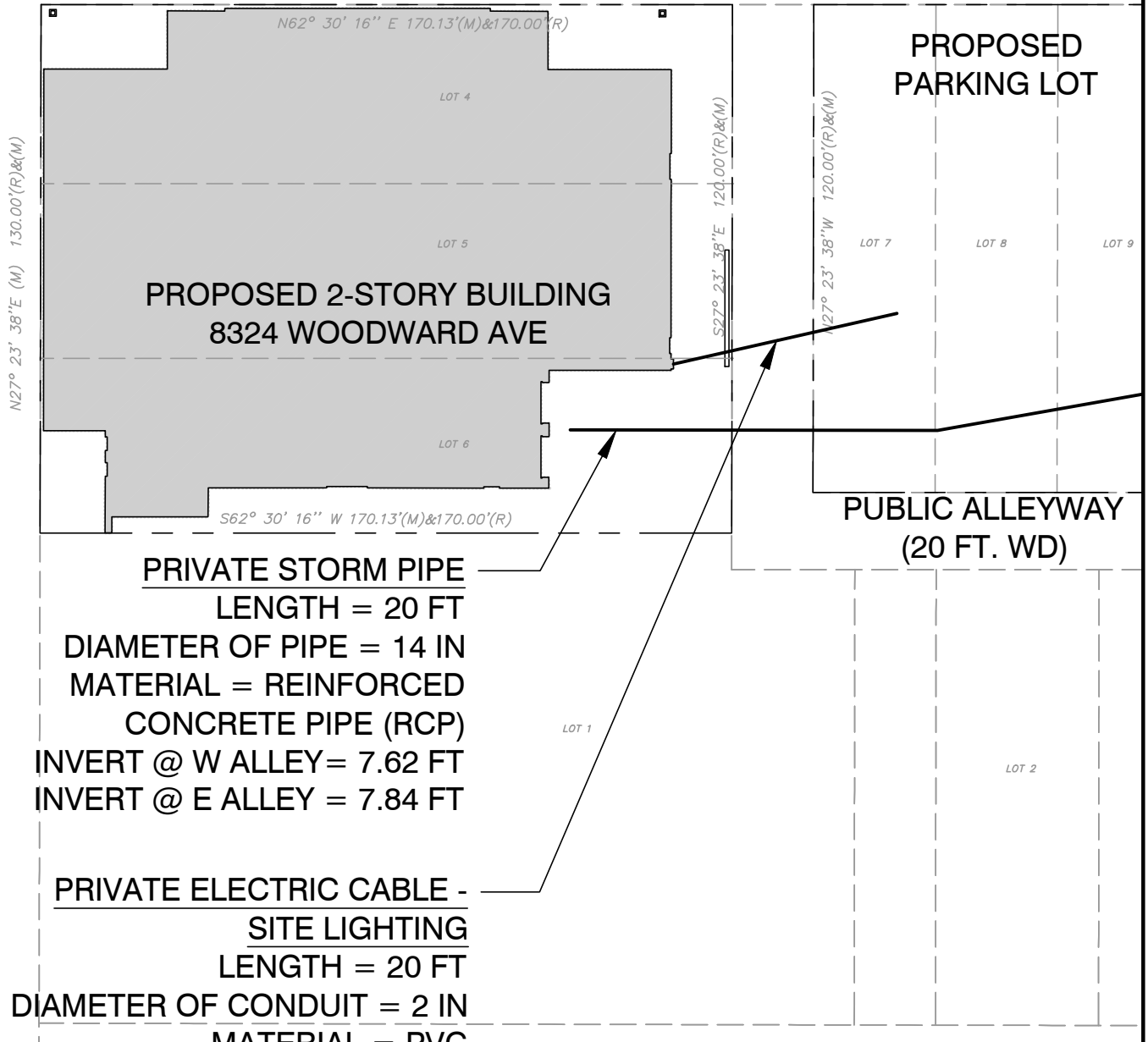
# CITY OF DETROIT ENCROACHMENT

## EXHIBIT 'A'

E EUCLID STREET (PUBLIC) (70 FT. WD)



WOODWARD AVENUE (PUBLIC) (100 FT. WD)



**PRIVATE STORM PIPE**  
 LENGTH = 20 FT  
 DIAMETER OF PIPE = 14 IN  
 MATERIAL = REINFORCED  
 CONCRETE PIPE (RCP)  
 INVERT @ W ALLEY = 7.62 FT  
 INVERT @ E ALLEY = 7.84 FT

**PRIVATE ELECTRIC CABLE -  
 SITE LIGHTING**  
 LENGTH = 20 FT  
 DIAMETER OF CONDUIT = 2 IN  
 MATERIAL = PVC  
 DEPTH = 36 INCHES  
 (UNIFORM)

Plotted: Feb 25, 2022, 9:18 AM by user: 1075 - Saved: 2/25/2022 by user: 1075  
 Ni:\NP\NLD Projects\NP18061 - Detroit People's Food Co-op\DWG\NP18061EASE.dwg



905 South Blvd. East Phone: (248) 844-5400  
 Rochester Hills, MI 48307 Fax: (248) 844-5440  
[www.sda-eng.com](http://www.sda-eng.com)

DRAWN: SAK	DATE: 02.18.2022
CHECKED: TLD	DATE: 02.21.2022
MANAGER: TLD	SCALE: 1" = 40'
JOB No. NP18-061	SHEET: 1 OF 1
SECTION 08 TOWN 01 SOUTH RANGE 10 EAST	
CITY OF DETROIT	WAYNE COUNTY, MI