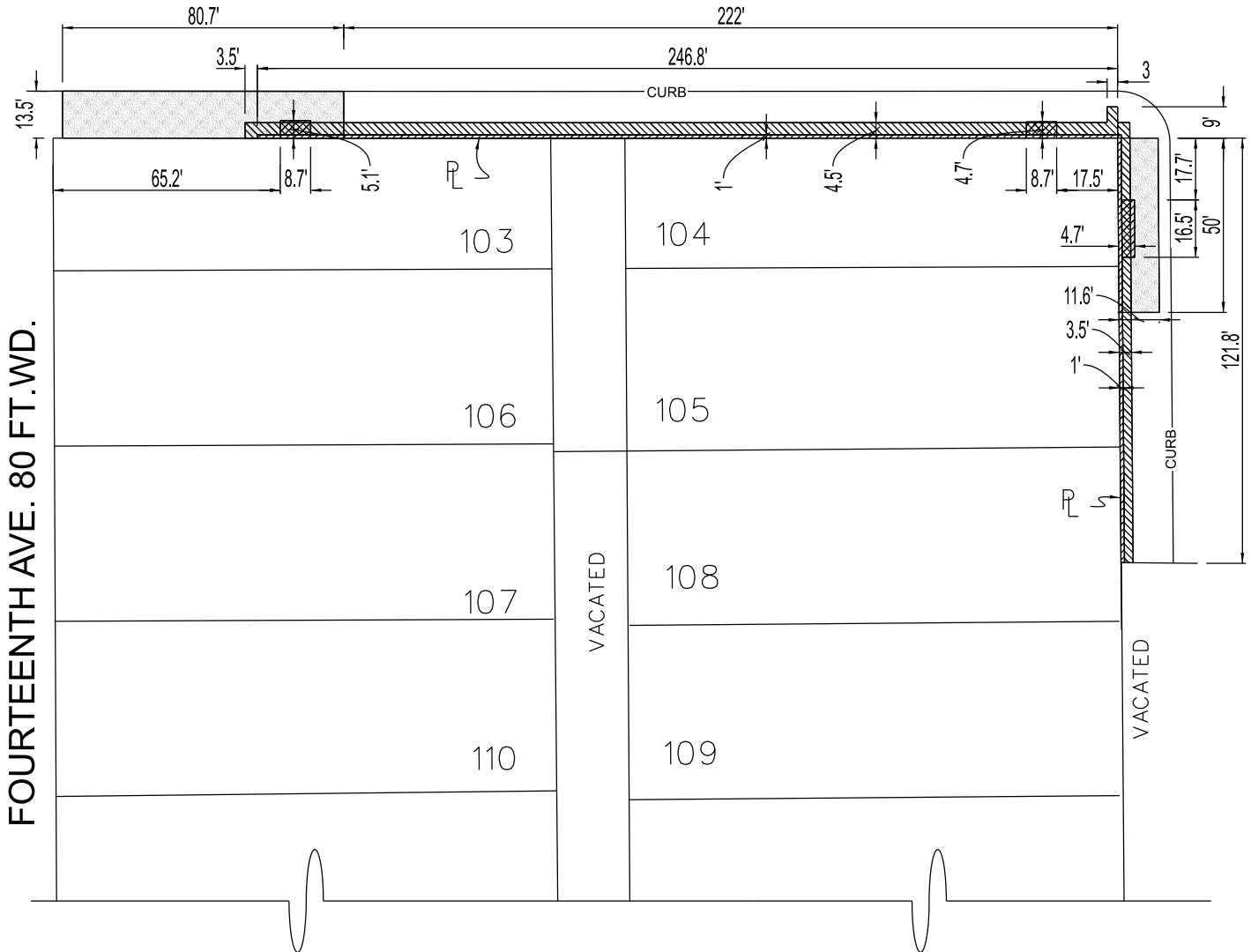


MAP-21-65
 GIFFELS WEBSTER
 28 W. ADAMS, SUITE 1200
 DETROIT, MICHIGAN 48226
 LEON EVANS
 PHONE NO. 313 962-4442



BAGLEY AVE. 80FT.WD.



- BELOW GRADE ENCROACHMENT FOR NON-STANDARD PAVEMENT AND PLANTERS
- ABOVE GRADE ENCROACHMENT FOR BUILDING ELEMENTS, FACED, LIGHTING AND SIGNAGE
- BELOW GRADE ENCROACHMENTS FOR UNDERGROUND BUILDING ELEMENTS, STRUCTURAL FOUNDATIONS AND FROST SLABS

(FOR OFFICE USE ONLY)

CARTO 18 A

B					
A					
	DESCRIPTION	DRWN	CHKD	APPD	DATE
REVISIONS					
	DRAWN BY SA	CHECKED			
	DATE 11-30-2021	APPROVED JD			

REQUEST FOR A SERIES OF ENCROACHMENTS INTO THE RIGHTS-OF-WAY WITHIN THE BLOCK BOUNDED BY BAGLEY AVE., 14TH ST., WABASH AVE. AND THE NEW YORK CENTRAL RAILWAY. AT 1501 WABASH ST.

CITY OF DETROIT
 CITY ENGINEERING DIVISION
 SURVEY BUREAU

JOB NO. 01-01
 DRWG. NO.