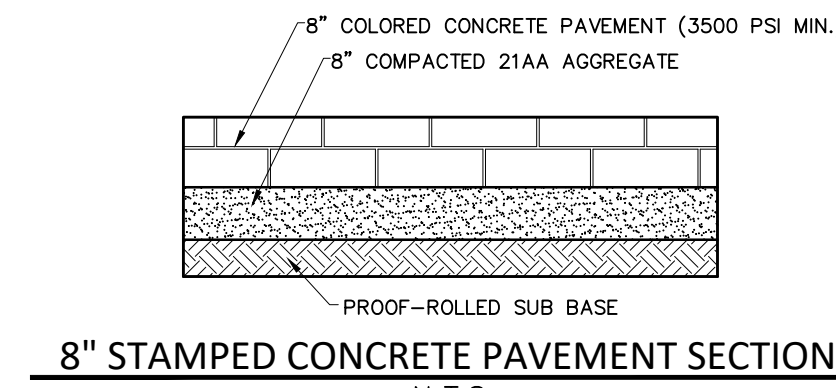
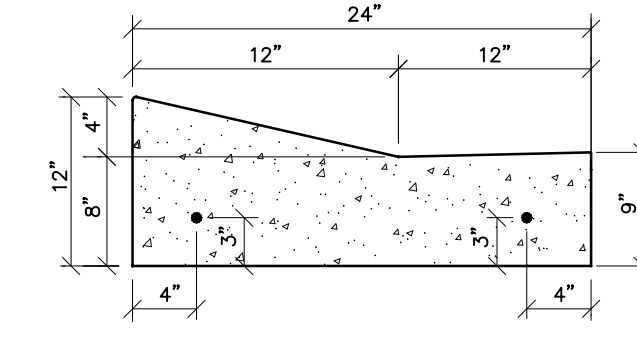


**ALLEY DESIGN DEVIATIONS**

1. 8" DECORATIVE COLORED CONCRETE
2. PAVEMENT SCORING PATTERN
3. PAVEMENT SLOPED ACROSS ALLEY TO MOUNTABLE CURB
4. INSTALL MOUNTABLE CURB & CUTTER
5. INSTALL DRAINAGE STRUCTURE ALONG CURB LINE & WITHIN ALLEY.
6. EXISTING HISTORICAL BUILDING ENROACHMENT INTO ALLEY (0.42')
7. REDUCE PAVEMENT WIDTH TO 15' ACROSS FRONTAGE OF EXISTING HISTORICAL BUILDING.



**8" STAMPED CONCRETE PAVEMENT SECTION**  
N.T.S.



**MOUNTABLE CURB AND GUTTER DETAIL**  
N.T.S.

**PAVING LEGEND**

- PROPOSED CONCRETE PAVEMENT
- PROPOSED ASPHALT PAVEMENT

**LEGEND**

- MANHOLE
- HYDRANT
- MANHOLE CATCH BASIN
- UTILITY POLE
- GUY WIRE
- C.D. MANHOLE
- HYDRANT
- INLET
- EXISTING SANITARY SEWER
- SAN. CLEAN OUT
- EXISTING WATERMAIN
- EXISTING STORM SEWER
- EX. R. Y. CATCH BASIN
- EXISTING BURIED CABLES
- OVERHEAD LINES
- LIGHT POLE
- SIGN
- EXISTING GAS MAIN
- PR. SANITARY SEWER
- PR. WATER MAIN
- PR. STORM SEWER
- PR. R. Y. CATCH BASIN
- PROPOSED LIGHT POLE

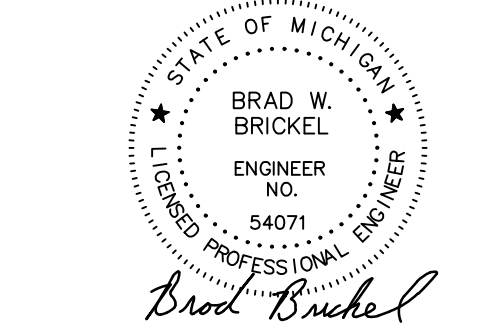


**Location Map**  
N.T.S.



**NOWAK & FRAUS ENGINEERS**  
46777 WOODWARD AVE.  
PONTIAC, MI 48342-5032  
TEL. (248) 332-7931  
FAX. (248) 332-8257  
WWW.NOWAKFRAUS.COM

SEAL



**PROJECT**  
3700 Trumbull Street  
Woodbridge Historic District  
Detroit, MI 48208

**CLIENT**  
3701 Lincoln, LLC  
6905 Telegraph Road,  
Bloomfield Hills, MI 48301

Contact: Tim Loughrin  
Phone: 248.282.1428  
Contact: Jason Jones  
Phone: 313.575.6835  
Contact: George Roberts  
Phone: 248.302.8662

**PROJECT LOCATION**  
Part of Hodges Bros.  
Subdivision of Outlots  
98, 99, 102 & 103  
Woodbridge Farm  
City of Detroit,  
Wayne County, Michigan

**SHEET**  
ROW Encroachment Plan-  
18' Wide Alley Option  
(For Presentation Only)



**DATE ISSUED/REVISED**

09-10-20	SURVEY ISSUED
09-17-20	ADDED SEWER INFO.
09-28-20	SETBACK RESTRICTIONS ADDED
12-07-20	ISSUED FOR SITE PLAN REVIEW
12-16-20	REVISED PER CITY REVIEW
01-22-21	PRELIMINARY HDC PACKAGE
03-22-21	ISSUED FOR SITE PLAN REVIEW
05-17-21	ROW ENCROACHMENT PLAN ISSUED
07-01-21	REVISED ROW ENCROACHMENT PLAN

**DRAWN BY:**  
R. Johnson  
**DESIGNED BY:**  
B. Brickel  
**APPROVED BY:**  
B. Brickel

**DATE:**  
September 10, 2020

**SCALE:** 1" = 30'  
30 15 0 15 30 45

**NFE JOB NO.** **SHEET NO.**  
**L898** **1 of 1**

