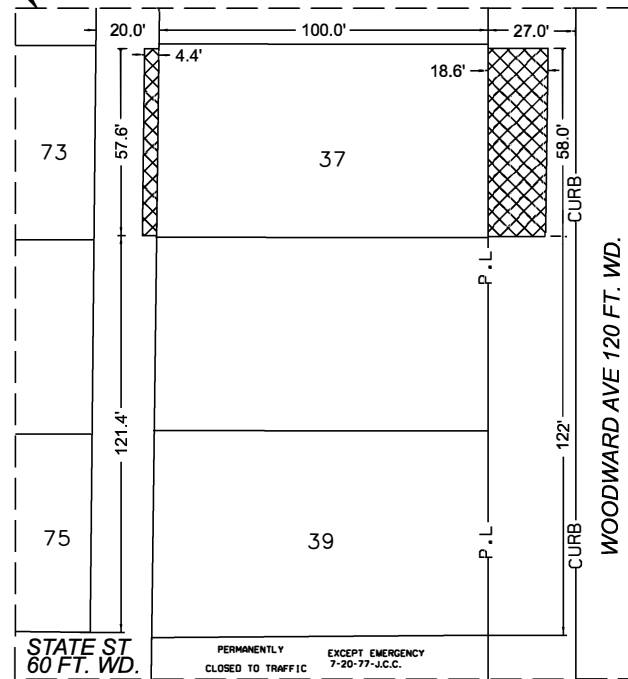
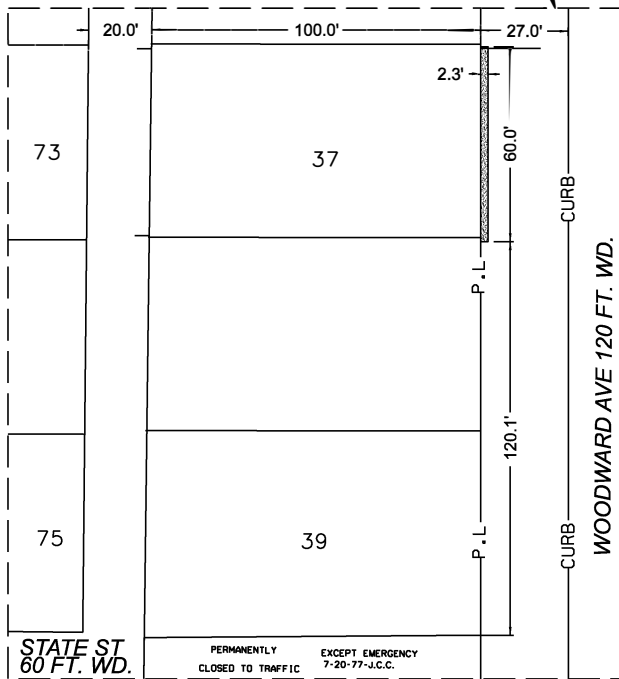
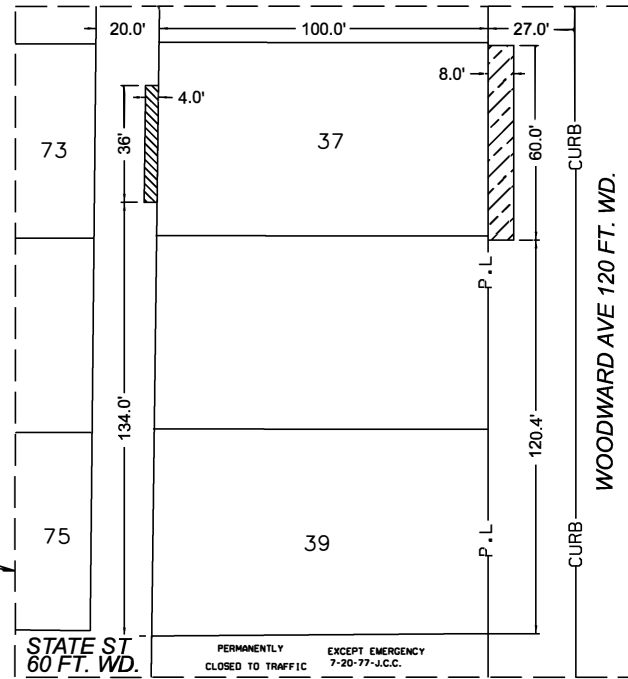
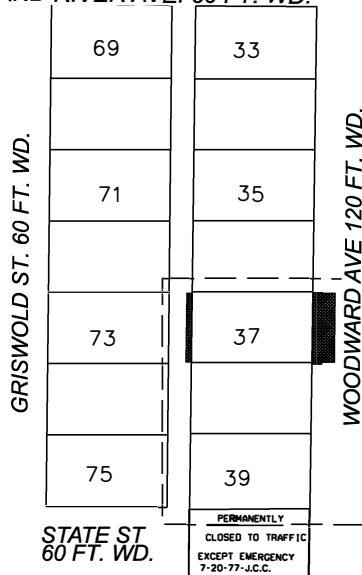


# MAP-21-78

## Petition No. x2022-18

GRAND RIVER AVE. 60 FT. WD.



### LEGEND

- REQUEST ENCROACHMENT
- FIRE ESCAPE BEGINNING AT GRADE AND EXTENDING TO 118'-0" ABOVE GRADE - (SEE DETAIL-A)
- FRONT AWNING BEGINNING AT 9'-0" FEET ABOVE GRADE AND EXTENDS TO 20'-2" ABOVE GRADE - (SEE DETAIL-A)
- VAULT ENCROACHMENTS BEGINNING AT GRADE AND EXTENDING 20'-0" BELOW GRADE - (SEE DETAIL-B)
- FRONT UPPER CORNICE STARTING AT 114'-0" ABOVE GRADE AND EXTENDS TO 120'-4" ABOVE GRADE - (SEE DETAIL-C)

(FOR OFFICE USE ONLY)

CARTO 28 B

<b>B</b>					
<b>A</b>					
DESCRIPTION	DRWN	CHKD	APPD	DATE	
REVISIONS					
DRAWN BY	SA	CHECKED			
DATE	02-18-2022	APPROVED			JD

**REQUEST ENCROACHMENT  
INTO THE ROW  
WITHIN THE BLOCK BOUNDED BY  
STATE ST. , WOODWARD AVE.,  
GRAND RIVER AVE. , AND GRISWOLD ST. .**

**CITY OF DETROIT**  
CITY ENGINEERING DIVISION  
SURVEY BUREAU

JOB NO. 01-01

DRWG. NO.